

Hematopatoloji slayt semineri

Doç. Dr. Fulya Öz Puyan
Trakya Üniversitesi Tıp Fakültesi
Tıbbi Patoloji A.D.



25 Ulusal Patoloji Kongresi
6. Sitopatoloji Kongresi

14 - 17 Ekim 2015 / Merinos AKKM - BURSA

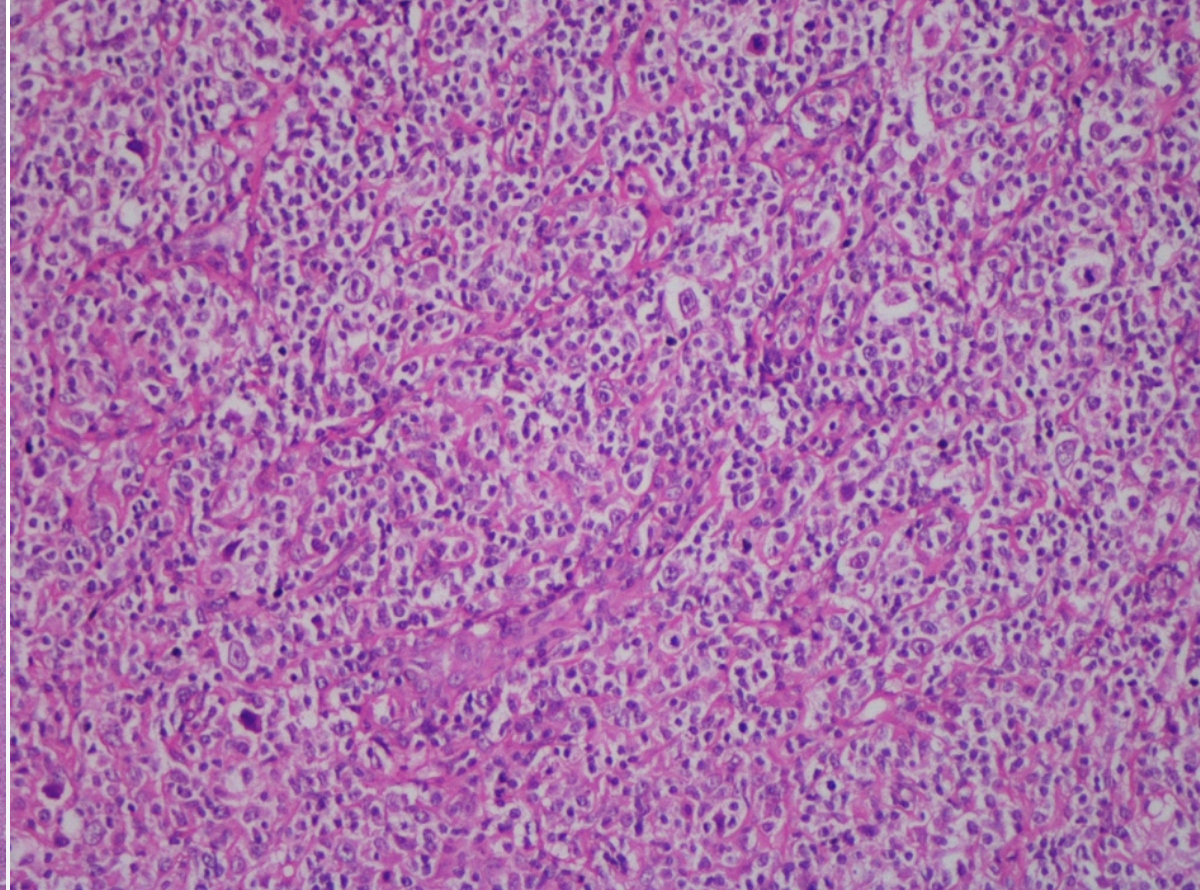
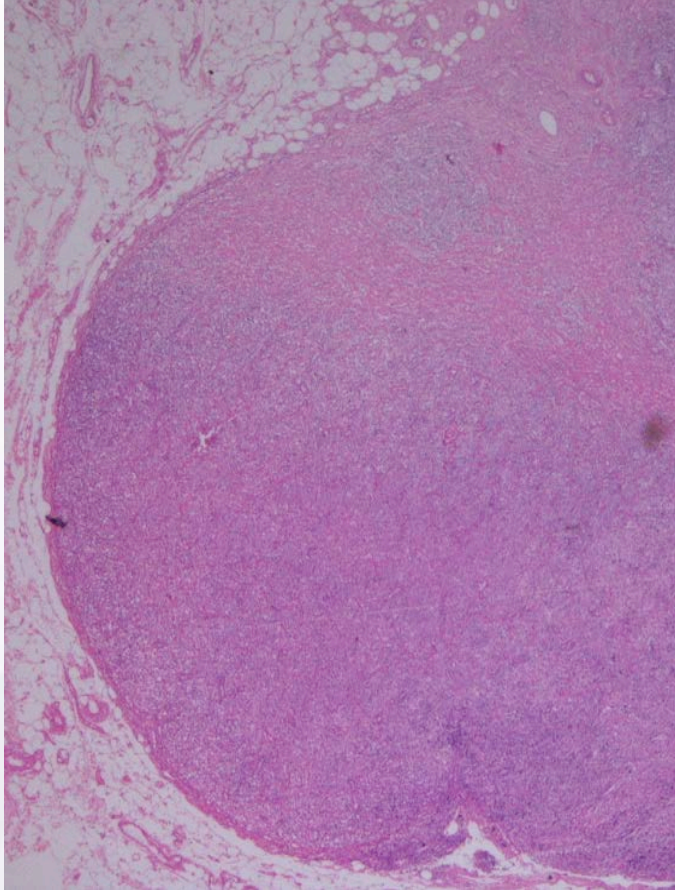


Olgu 1

- **Klinik ve Laboratuvar bulguları:**
- 81 yaşında erkek hasta, halsizlik, öksürük şikayeti ile 2011 yılında hastaneye başvuruyor
- Anemi, trombositopeni yanısıra supraklaviküler ve mediastinal lenfadenopati, splenomegali tespit ediliyor



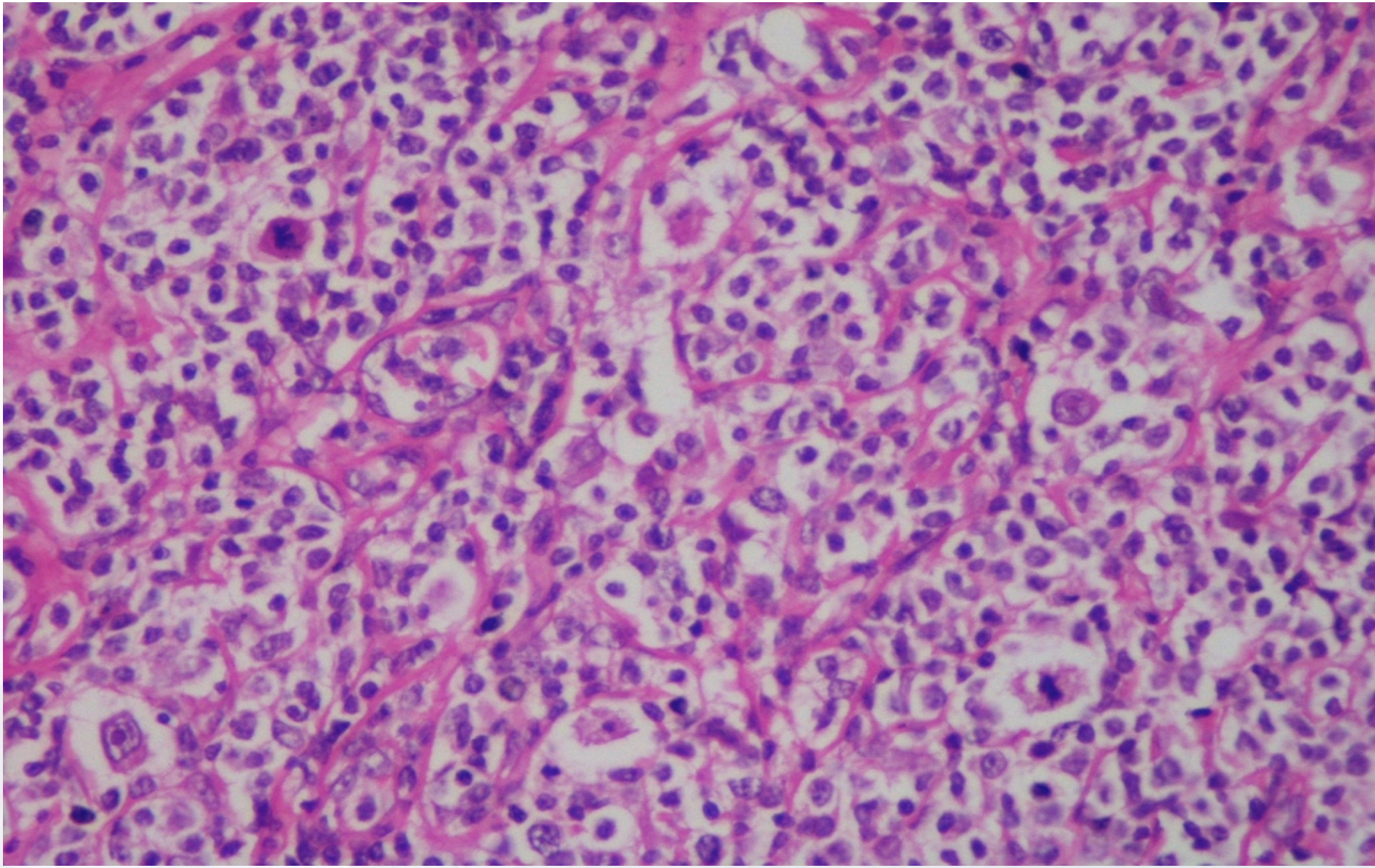
Lenf bezi biyopsisi:



25 Ulusal Patoloji Kongresi
6. Sitopatoloji Kongresi

14 - 17 Ekim 2015 / Merinos AKKM - BURSA



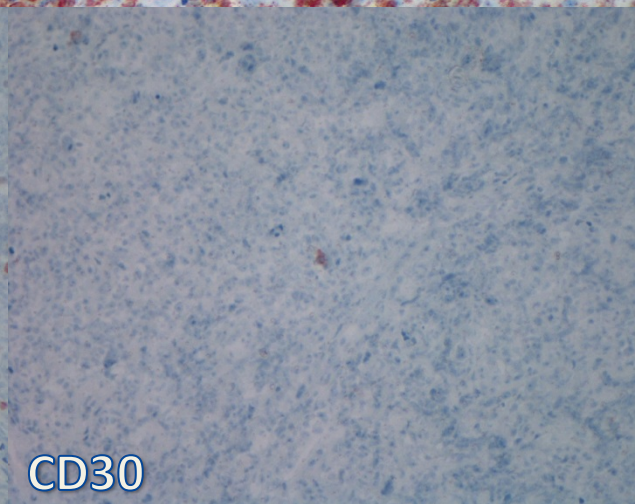
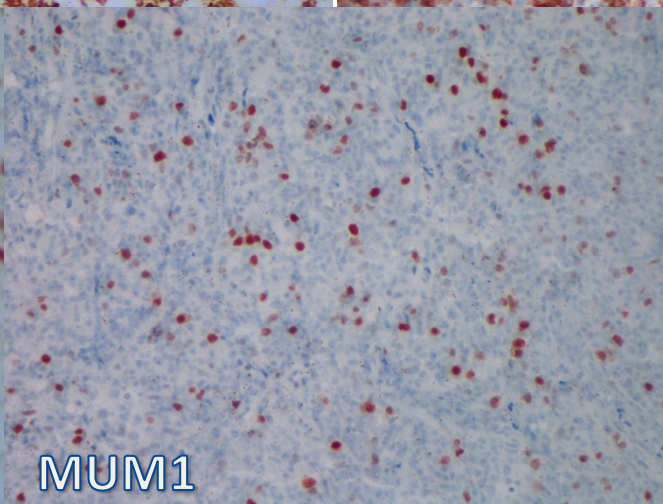
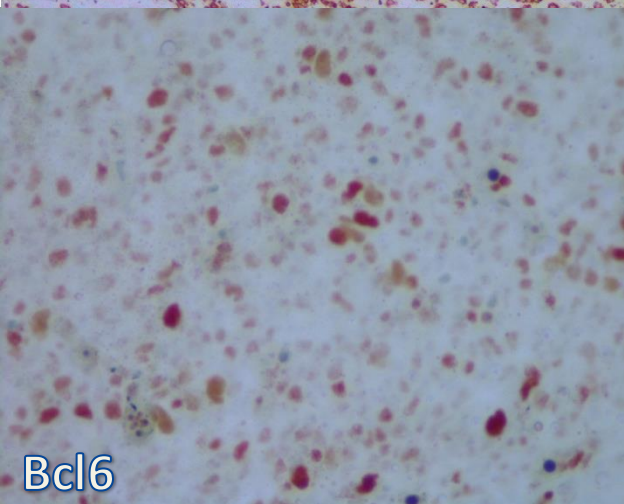
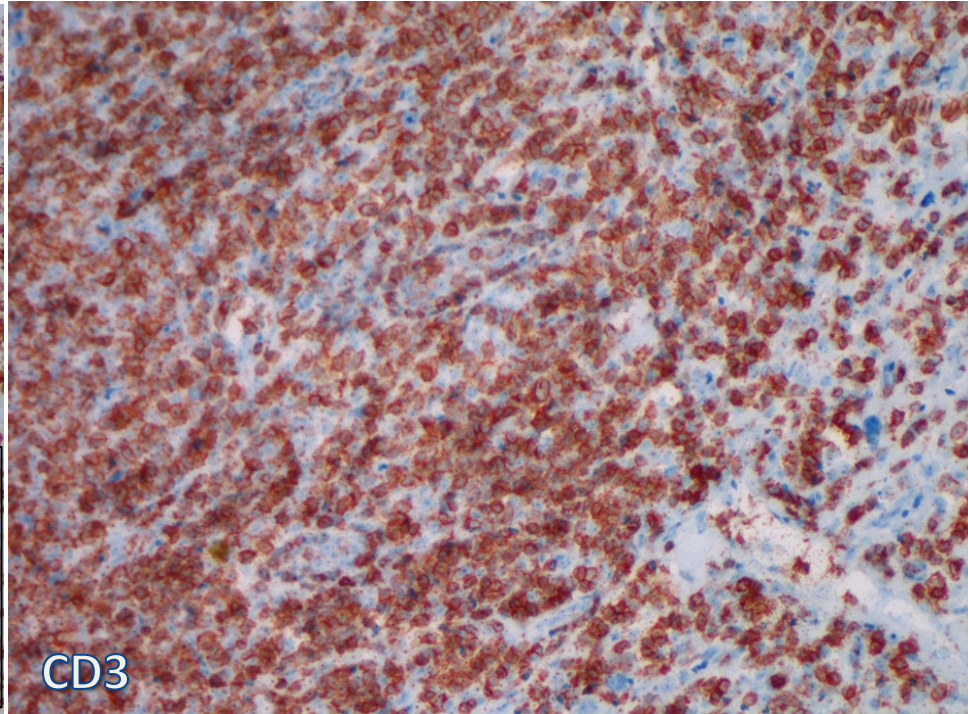
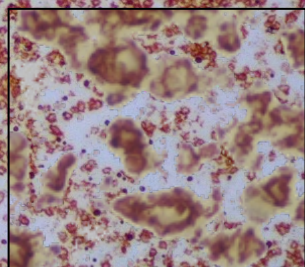
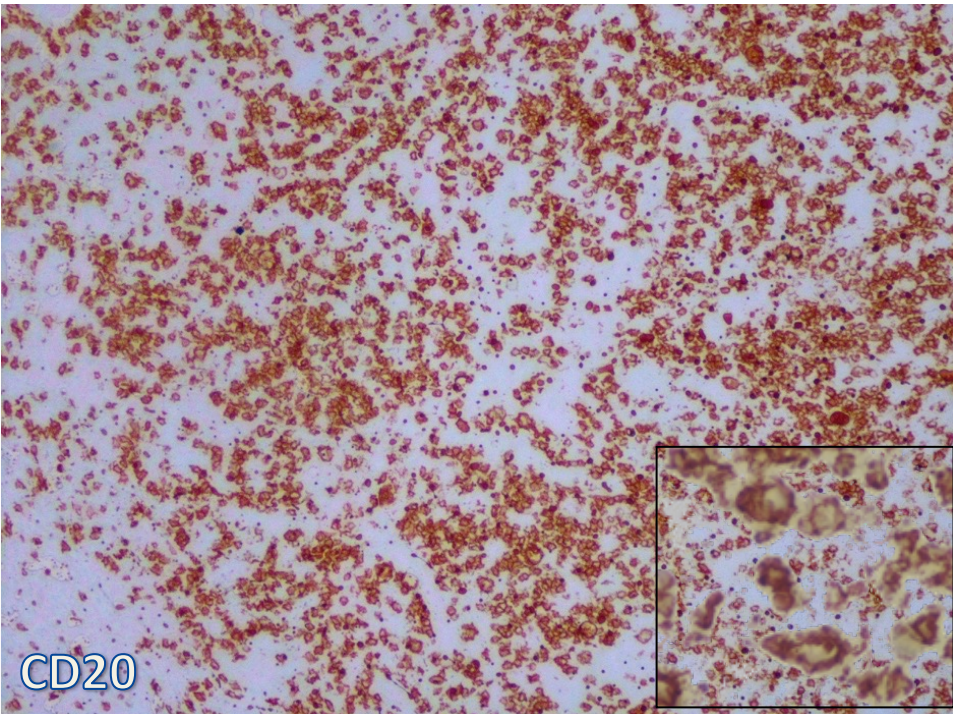


25. Ulusal Patoloji Kongresi

6. Sitopatoloji Kongresi

14 - 17 Ekim 2015 / Merinos AKKM - BURSA



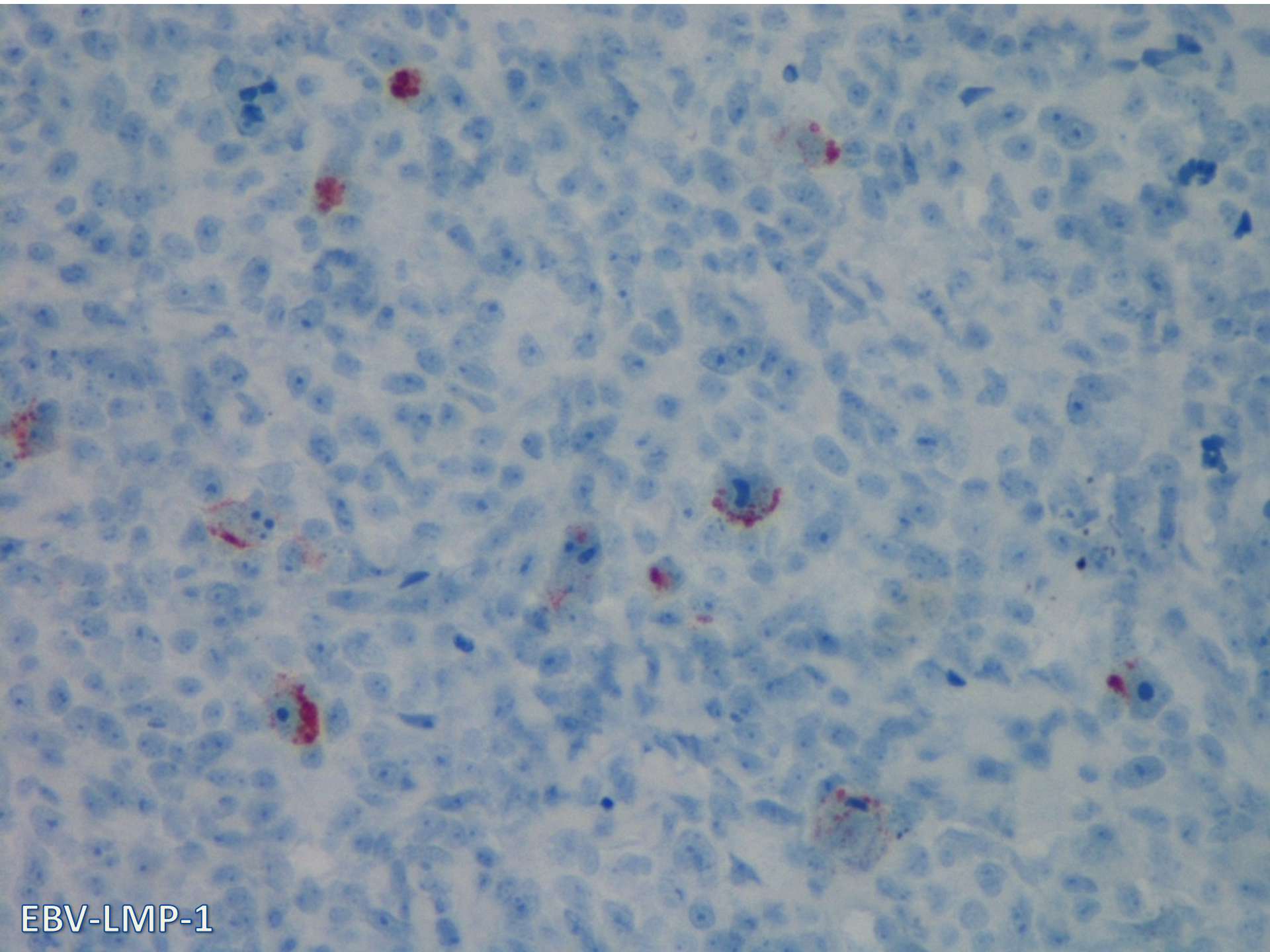


25. Ulusal Patoloji Kongresi

6. Sitopatoloji Kongresi

14 - 17 Ekim 2015 / Merinos AKKM - BURSA





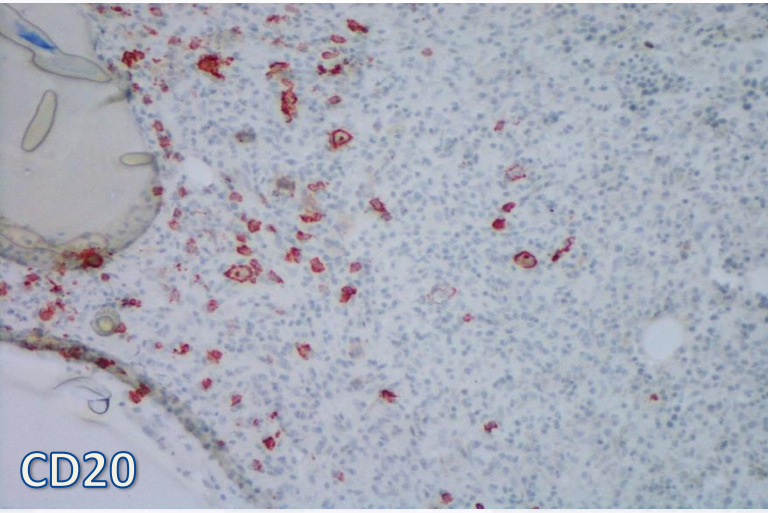
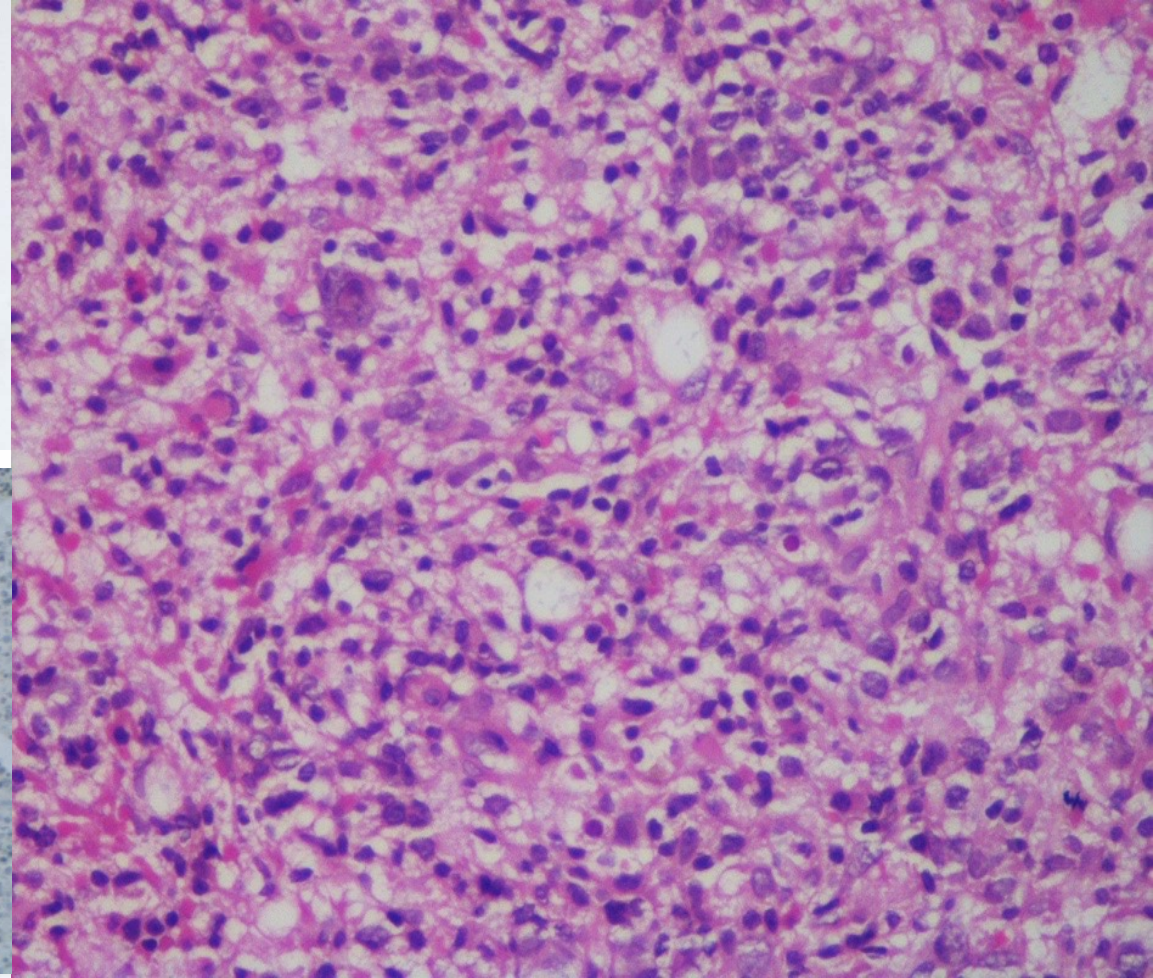
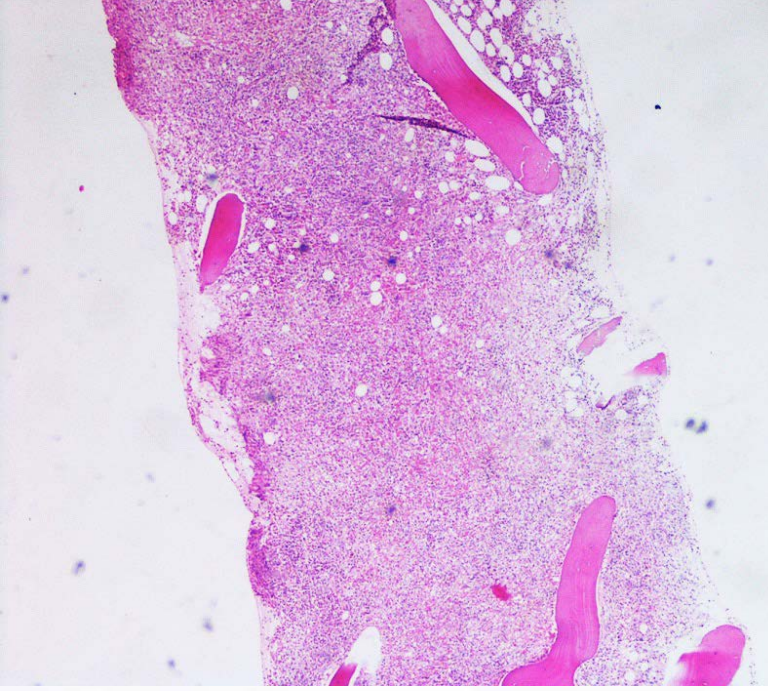
EBV-LMP-1

Diğer İmmunohistokimya

- Pax5: +
- LCA: +
- CD10: -
- CD23:-
- CD15:-
- Fascin :-



Kemik iliği



25. Ulusal Patoloji Kongresi
6. Sitopatoloji Kongresi

14 - 17 Ekim 2015 / Merinos AKKM - BURSA





25. Ulusal Patoloji Kongresi

6. Sitopatoloji Kongresi

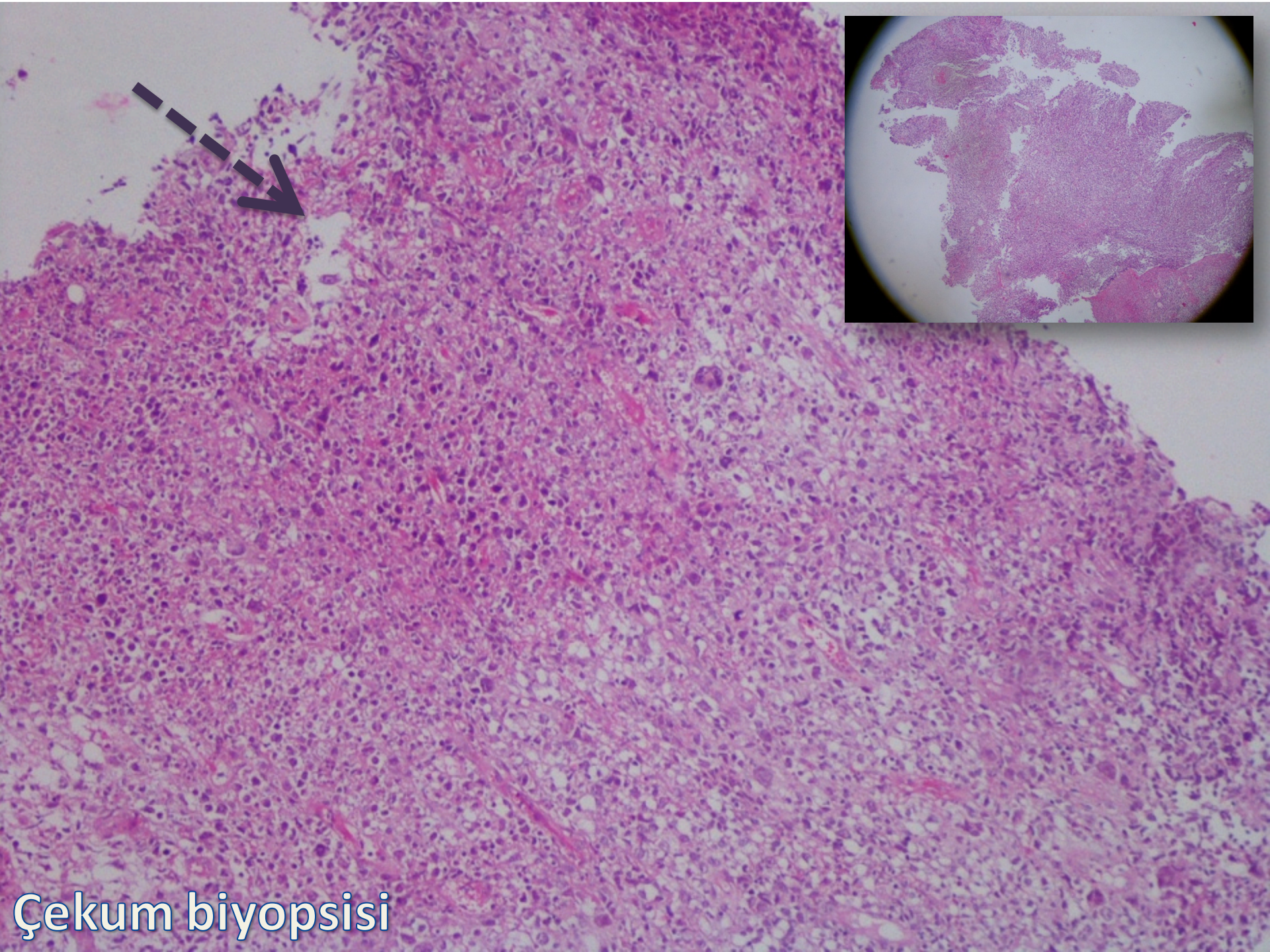
14 - 17 Ekim 2015 / Merinos AKKM - BURSA



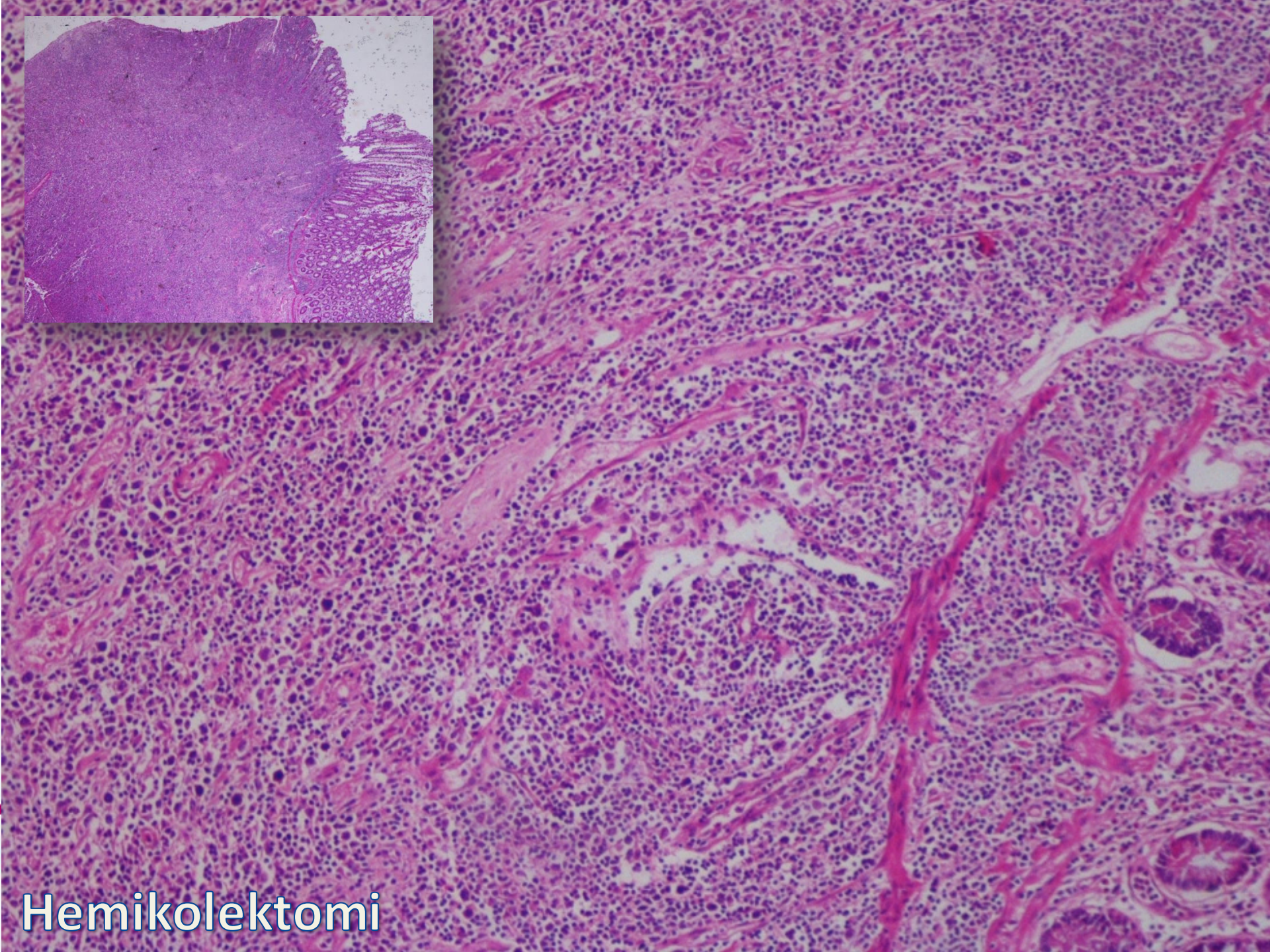
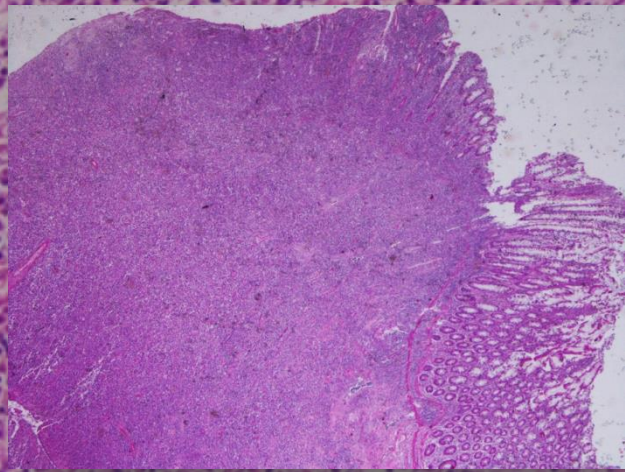
Olgu 2

- **Klinik ve Laboratuvar bulguları:**
- 67 yaşında erkek hasta
- 2014 yılında GIS kanama nedeniyle çekum biyopsisi: Dış merkezde malign tümöral oluşum tanısı alır.
- Batın BT: Abdominal kitle, dalakta nodüler oluşum
- Dış merkezde sağ hemikolektomi operasyonu
- Konsültasyon blokları

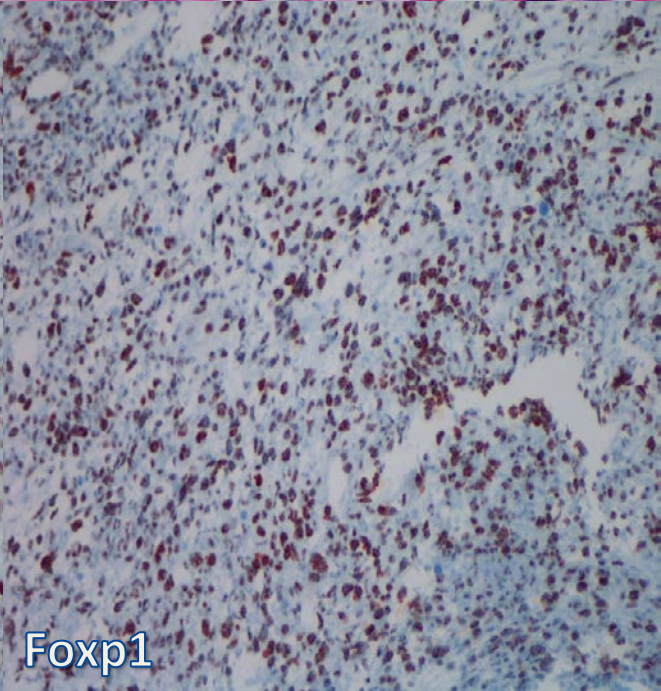
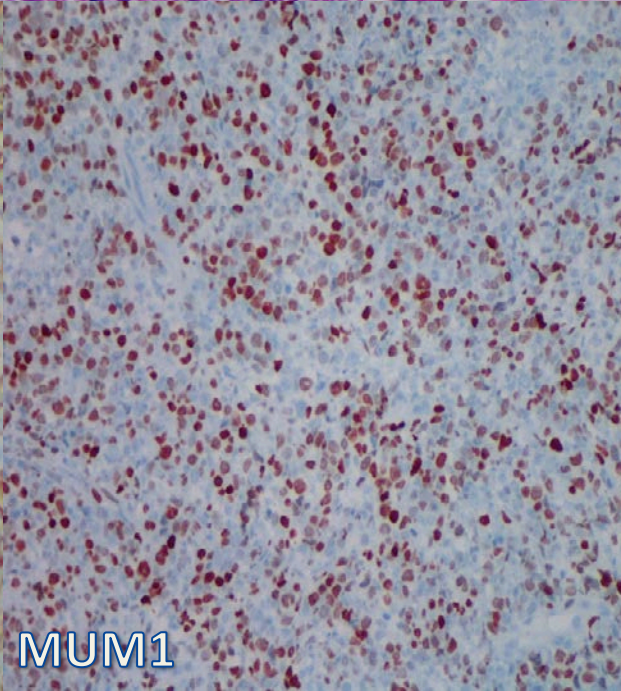
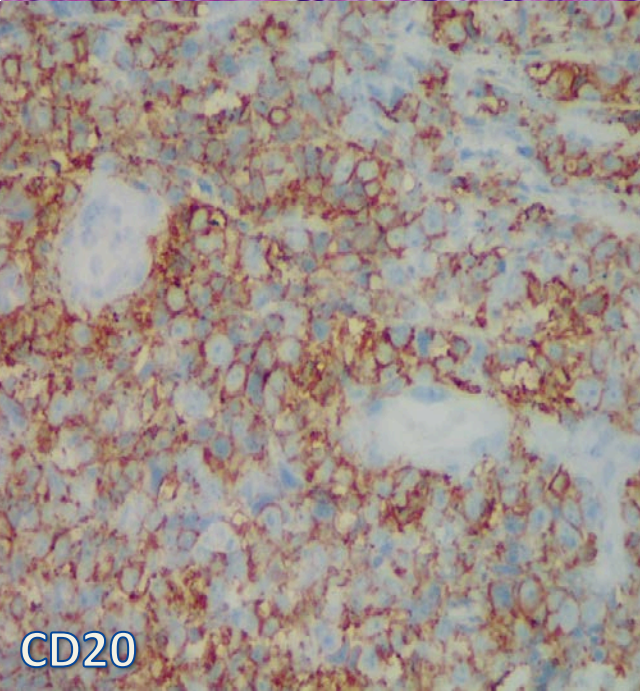
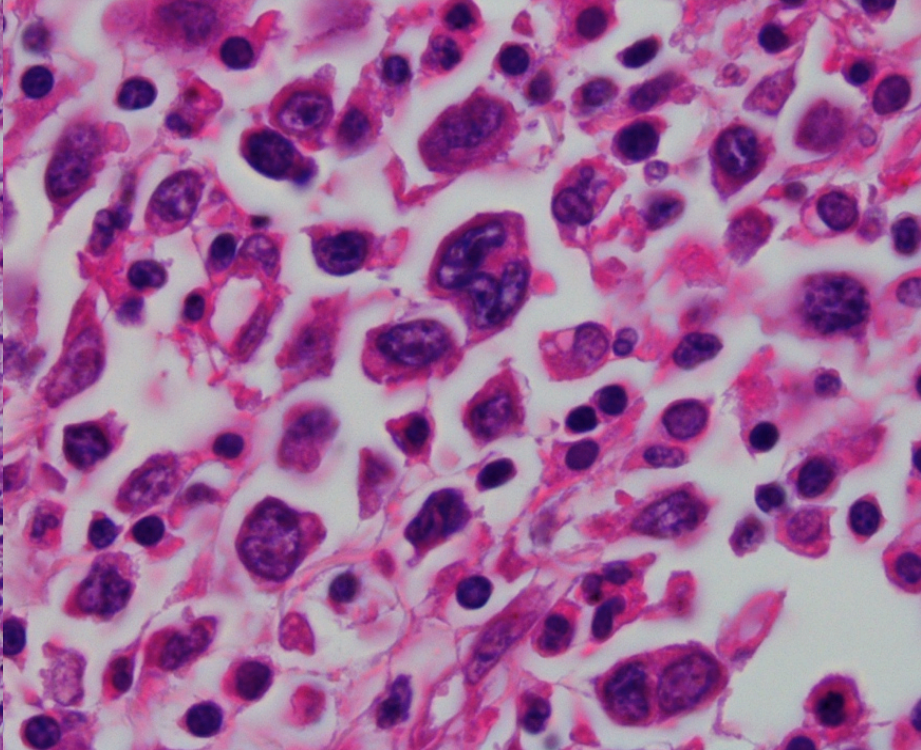
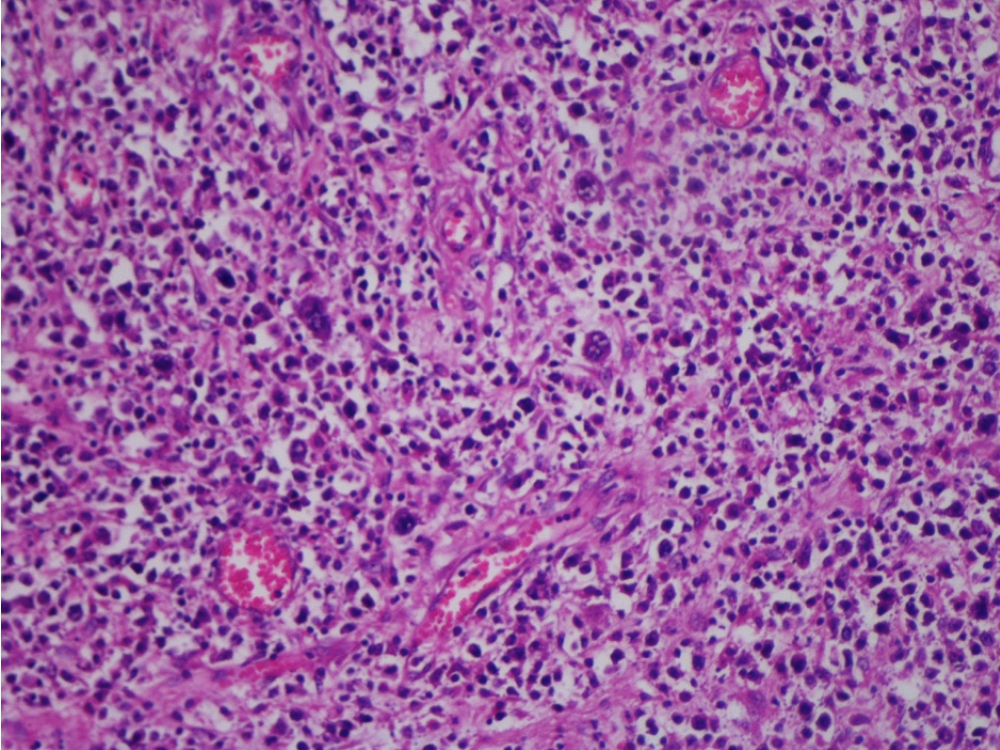




Çekum biyopsisi



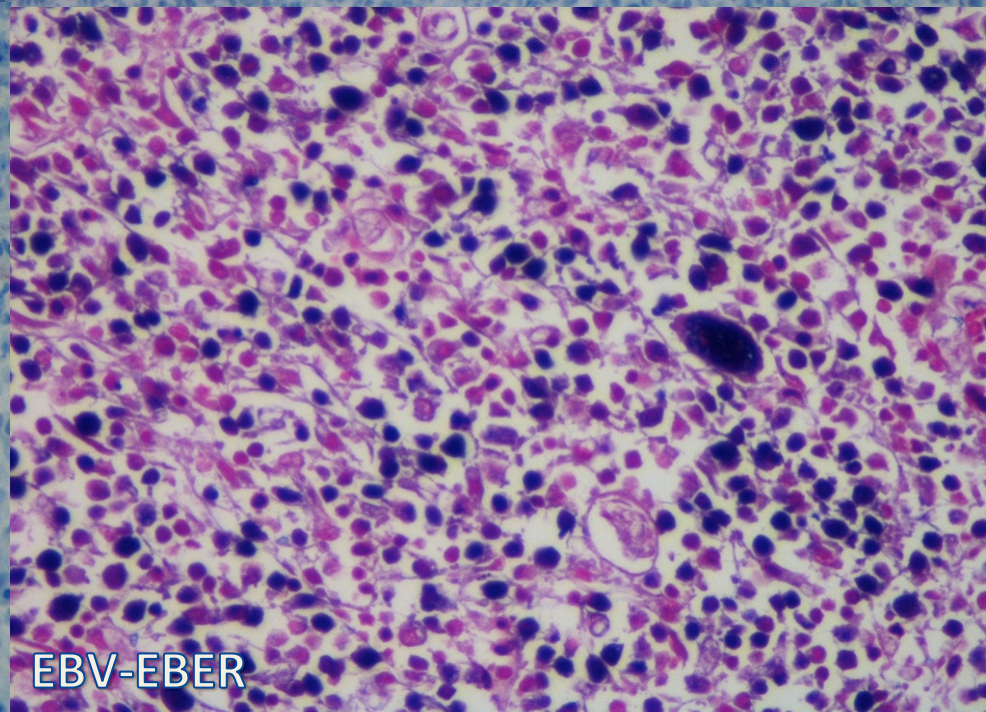
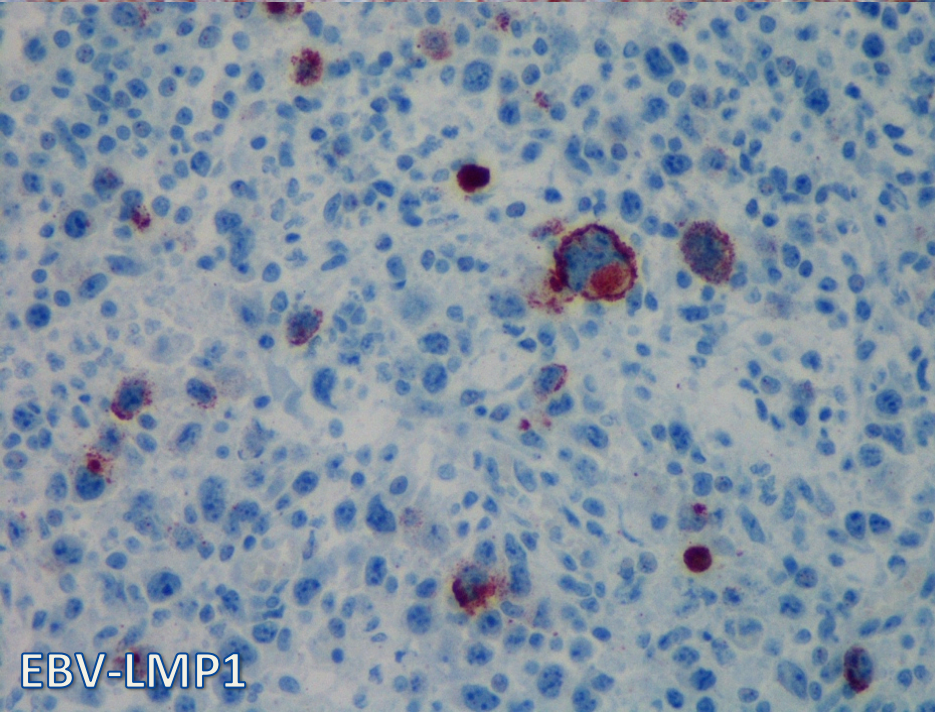
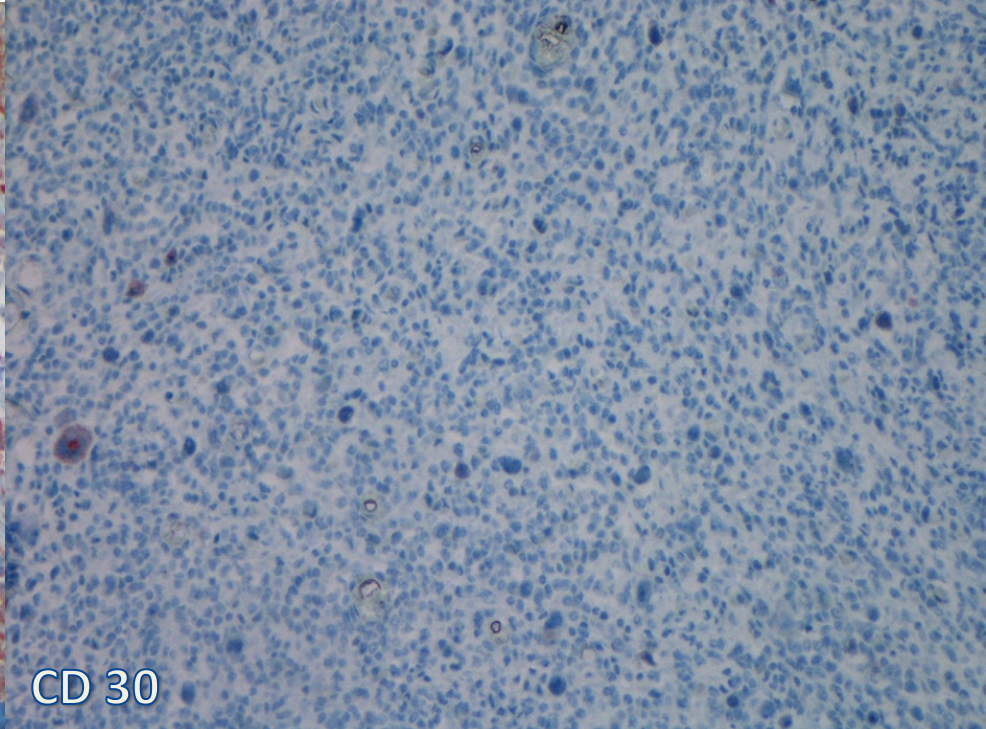
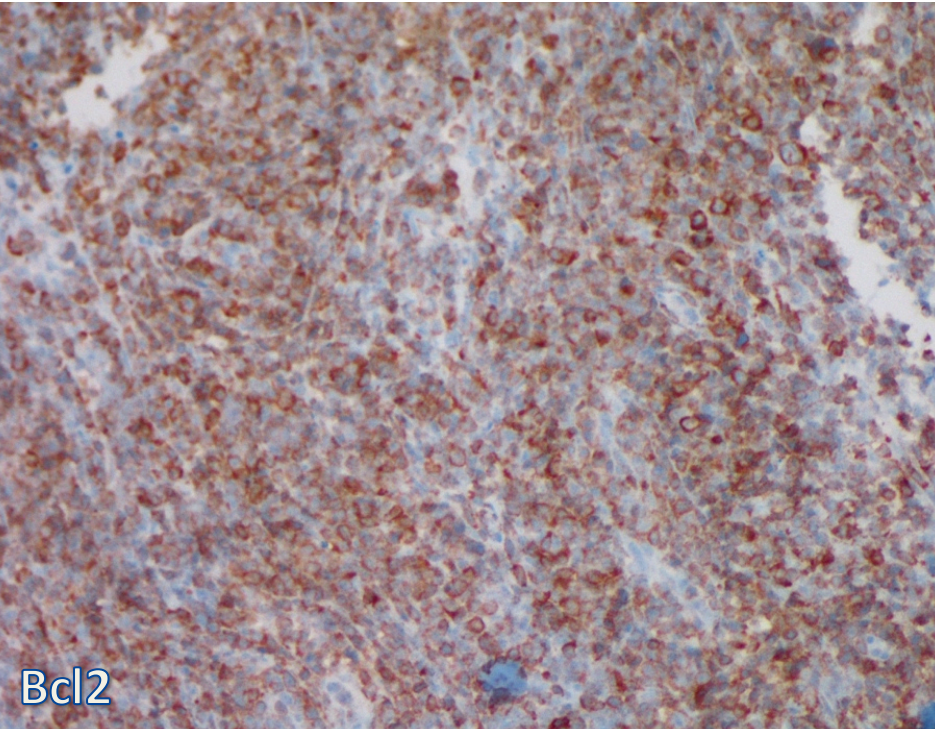
Hemikolektomi



CD20

MUM1

Foxp1



Diğer İmmunohistokimya

- Bcl6: -
- CD3: -
- CD10: -
- CD23:-
- CD15:-
- ALK: -
- Ki67 :%80





Peki bu sefer
tanı ne?



25. Ulusal Patoloji Kongresi

6. Sitopatoloji Kongresi

14 - 17 Ekim 2015 / Merinos AKKM - BURSA



Yaşlıların EBV pozitif Büyük B hücreli lenfoması



Peki bu sefer
tanı ne?



25. Ulusal Patoloji Kongresi
6. Sitopatoloji Kongresi

14 - 17 Ekim 2015 / Merinos AKKM - BURSA



Tedavi

- Olgu 1- Nodal hastalık:
 - Evre 4A;
 - 8 kür R-CHOP tedavisi;
 - 3 ay önce halsizlik ve trombositopeni (nüks?)
- Olgu 2- Ekstranodal hastalık:
 - Evre 4B;
 - R-CEOP tedavisi (koroner arter hastalığı nedeniyle doksorubisin yerine etopozid verildi)
 - Remisyonda



Yaşlıların EBV+ Büyük B hücreli Lenfoması (DLBCL-E)

- Senil EBV ile ilişkili B hücreli Lenfoproliferatif hastalık
- 2003'de Oyama ve ark. ilk olarak tanımlamış
- 2008 WHO sınıflaması
- Bilinen immun yetmezliği veya iatrojenik immunsupresyonu bulunmayan, > 50 yaş kişilerde görülen agresif EBV + monoklonal B hücre proliferasyonu
- Erkeklerde daha sık, ortalama yaş 71
- DLBCL'in %3-14'ü (Asya'da %8-10, U.S. ve Avrupa'da %3-4)



Yaşlıların EBV+ Büyük B hücreli Lenfoması (DLBCL-E)

- Aktive germinal merkez dışı B hücre immunfenotip
- Yaş ile immun sistem etkinliği azalması sonucu,
- EBV'nin uyarıcı etkisindeki B hücre klonunun kontrolden çıkışı (EBV induced NF-kB ve JAK/STAT yolak aktivasyonu)
- Ekstranodal tutulum sık (%70); deri, akciğer, tonsil, gastrointestinal sistem
- Primer nodal tutulum %30
- Klinik seyir kötü; ortalama 2 yıl



Epstein–Barr virus-positive diffuse large B-cell lymphoma of the elderly: a concise review and update

Volume 27 • Number 5 • September 2015

Jung Yong Hong^a, Young Hyeon Ko^b, Seok Jin Kim^c, and Won Seog Kim^c

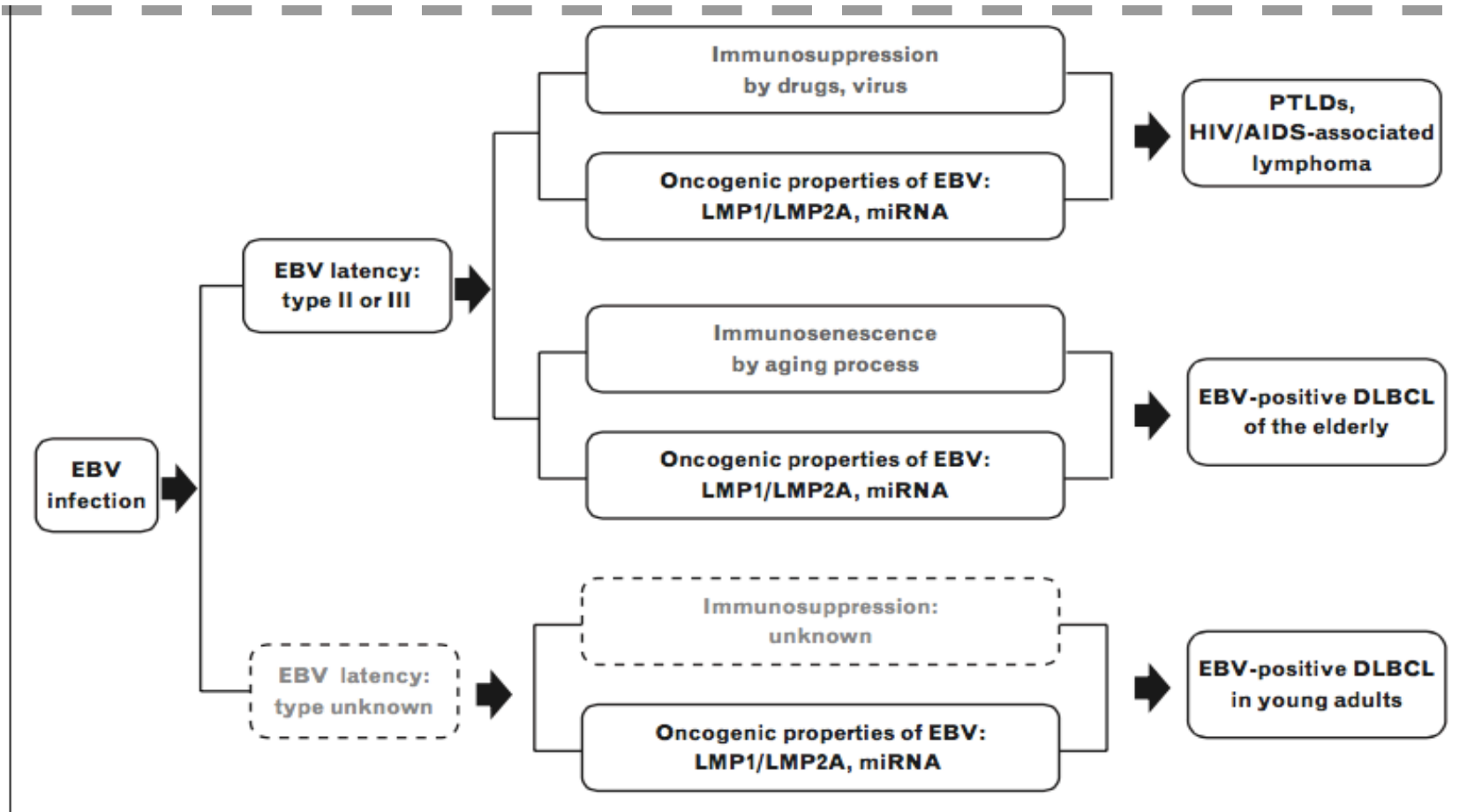
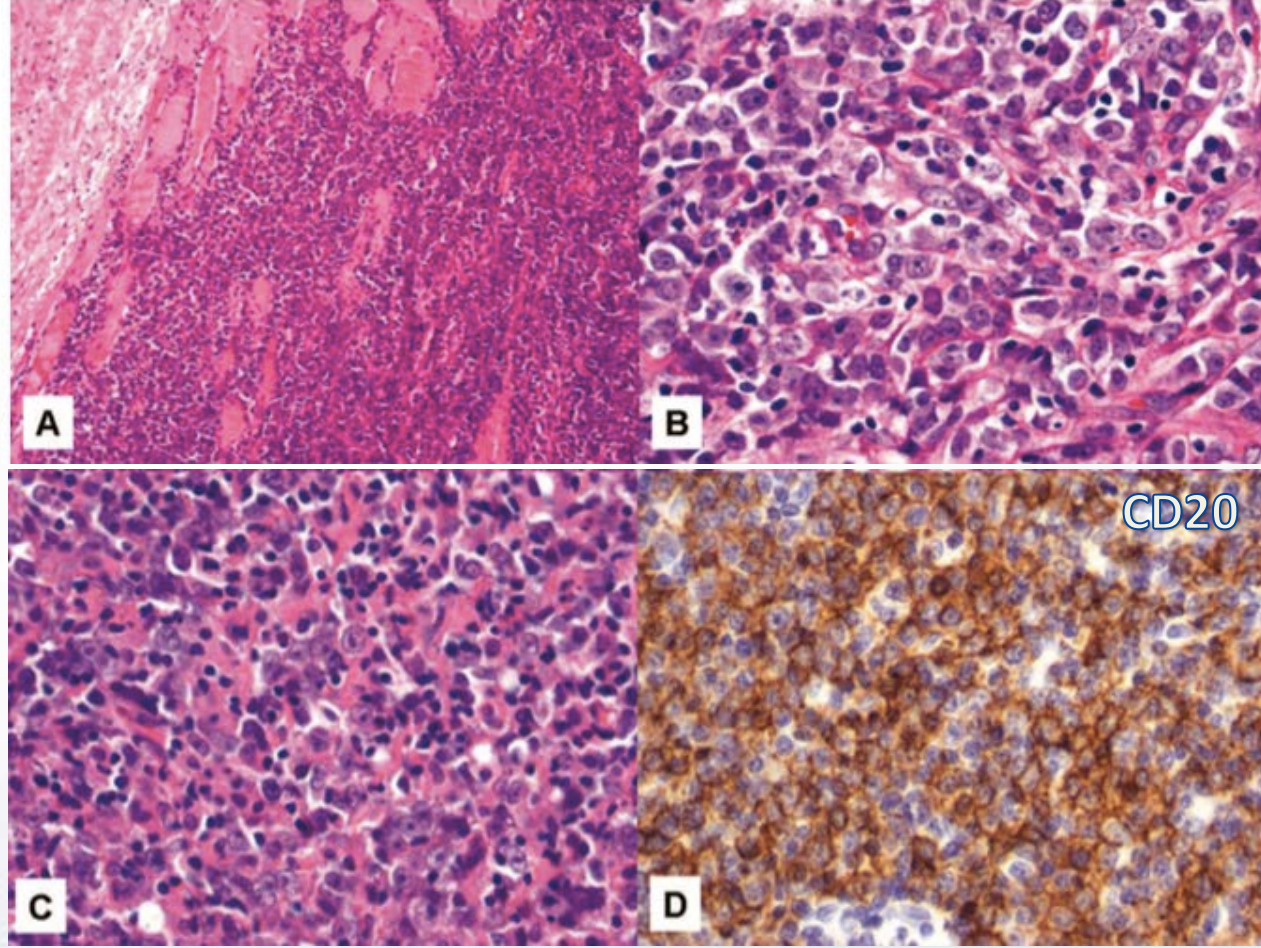


FIGURE 1. Schematic illustration of pathogenesis of EBV-positive lymphoproliferative disease. First, PTLDs, HIV/AIDS-associated lymphoma, EBV-positive DLBCL of the elderly. Second, EBV-positive DLBCL in young adults. DLBCL, diffuse large B-cell lymphoma; EBV, Epstein–Barr virus; PTLDs, posttransplant lymphoproliferative disorders.

HİSTOLOJİK BULGULAR

- Centroblastik, İmmunoblastik, büyük pleomorfik, Reed Sternberg benzeri hücrelerden oluşur.
- Monomorfik (%50) veya polimorfik varyant



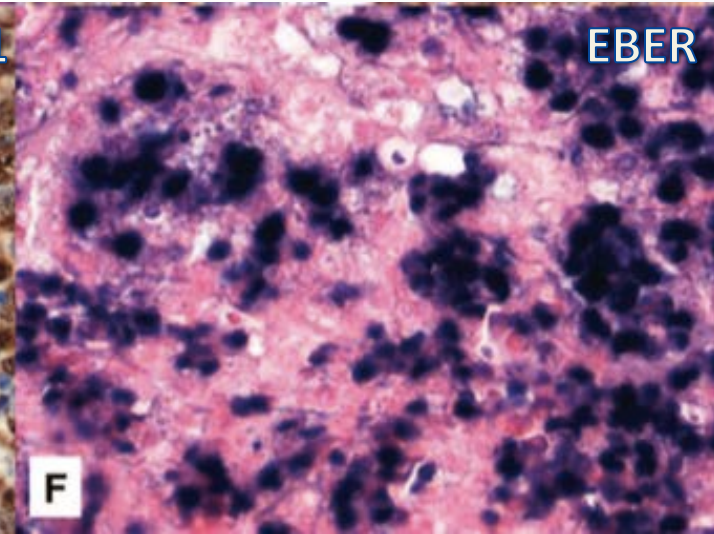
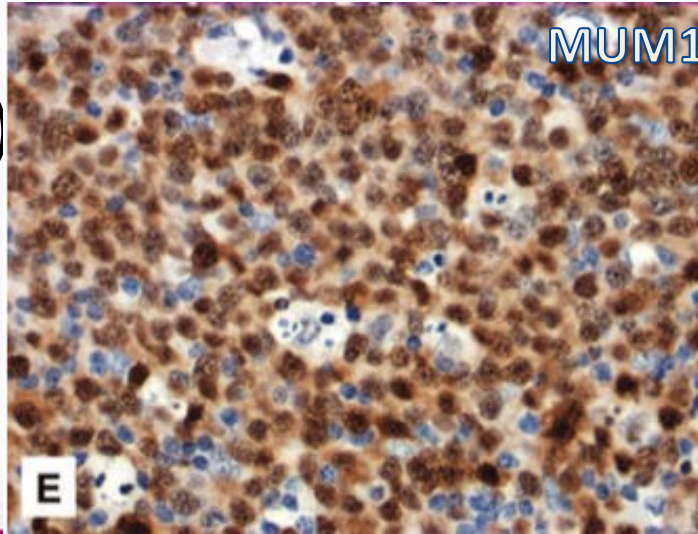
Epstein-barr virus-positive diffuse large B-cell lymphoma of the elderly: what we know so far. Castillo JJ, Beltran BE, Miranda RN, Paydas S, Winer ES, Butera JN. Oncologist. 2011;16(1):87-96. doi: 10.1634/theoncologist.2010-0213. Review.



İmmunfenotipik özellikler

- LCA, CD20, CD79a, PAX5 +
- CD10 ve Bcl6 sıklıkla –
- IRF4/MUM1 +
- LMP1 (%94) ve EBNA 2 (%28) +
- CD30 (%50)
- CD15 –
- ki67 >%70

EBER + (%10-100)



Ayırıcı Tanı

- **Nonneoplastik:**
 - Reaktif interfoliküler genişleme / enfeksiyöz mononükleoz
- **Neoplastik:**
 - Diğer EBV ile ilişkili DLBCL'lar (*lenfomatoid granülomatosis, plazmablastik lenfoma, primer effüzyon lenfoması, kronik inflamasyon ile ilişkili DLBCL*)
 - Genç hastalarda görülen EBV ile ilişkili DLBCL
 - Postransplant lenfoproliferatif hastalık
 - Klasik tip Hodgkin lenfoma



Prognoz

- EBV pozitif olgular; EBV negatif DLBCL olgularına göre ***daha kötü prognoza*** sahip
- **Ok ve ark.**: EBV pozitifliği Batı ülkelerinde prognozu etkilemez. ***Asyalılarda*** prognoz ***daha kötü*** (coğrafik/etnik deęişkenlik)



Prevalence and Clinical Implications of Epstein-Barr Virus Infection in de novo Diffuse Large B-Cell Lymphoma in Western Countries

Chi Young Ok^{1,*}, Ling Li^{1,*}, Zijun Y. Xu-Monette^{1,*}, Carlo Visco², Alexander Tzankov³, Ganiraju C. Manyam⁴, Santiago Montes-Moreno⁵, Karen Dybkær⁶, April Chiu⁷, Attilio Orazi⁸, Youli Zu⁹, Govind Bhagat¹⁰, Jiayu Chen¹¹, Kristy L. Richards¹², Eric D. Hsi¹³, William W. L. Choi¹⁴, J. Han van Krieken¹⁵, Jooryung Huh¹⁶, Weiyun Ai¹⁷, Maurilio Ponzoni¹⁸, Andrés J. M. Ferreri¹⁸, John P. Farnen¹⁹, Michael B. Møller²⁰, Carlo E. Bueso-Ramos¹, Roberto N. Miranda¹, Jane N. Winter²¹, Miguel A. Piris⁵, L. Jeffrey Medeiros¹, and Ken H. Young^{1,*}

Results—Twenty-eight patients (4.0%) were positive for EBV with a median age of 60.5 years.

No clinical implications were observed for EBV-
negative DLBCL. EBV+ DLBCL was associated with CD30 expression, CD30 was associated with survival, CD30 expression was not achieved in EBV+ DLBCL.

- EBV pozitifliği prognozu etkilemez.
- Asya ve Latin ırkındaki DLBCL-E olgularında CD30 pozitifliği %75-89
- EBER ve CD30 koekspresyonu kötü prognoz

enhanced activity of the NF- κ B and JAK/STAT pathways.

Conclusions—The clinical characteristics of patients with EBV+ versus EBV-negative DLBCL are similar and EBV infection does not predict a worse outcome. EBV+ DLBCL, however, has a unique genetic signature. CD30 expression is more common in EBV+ DLBCL and, when present, is associated with an adverse outcome.

LYMPHOID NEOPLASIA

EBV-positive large B-cell lymphomas in young patients: a nodal lymphoma with evidence for a tolerogenic immune environment

Alina Nicolae,¹ Stefania Pittaluga,¹ Shahed Abdullah,¹ Seth M. Steinberg,² Thu Anh Pham,³ Theresa Davies-Hill,¹ Liqiang Xi,³ Mark Raffeld,³ and Elaine S. Jaffe¹

¹Hematopathology Section, Laboratory of Pathology, National Cancer Institute, Bethesda, MD; ²Biostatistics and Data Management Section, Office of the Clinical Director, Center for Cancer Research, National Cancer Institute, Bethesda, MD; and ³Molecular Diagnostics Unit, Laboratory of Pathology, National Cancer Institute, Bethesda, MD

EBV1 LBCLs are not restricted to the elderly. Young patients present with nodal disease and have a good prognosis.

Annals of Oncology 26: 548–555, 2015

doi:10.1093/annonc/mdu556

Published online 4 December 2014

EBV-positive diffuse large B-cell lymphoma in young adults: is this a distinct disease entity?

J. Y. Hong^{1,†}, D. H. Yoon^{2,†}, C. Suh², J. Huh³, I.-G. Do⁴, I. Sohn⁴, J. Jo⁴, S.-H. Jung^{4,5}, M. E. Hong⁶, H. Yoon⁶, Y. H. Ko⁶, S. J. Kim⁷ & W. S. Kim^{7*}

¹Department of Internal Medicine, Chung-Ang University College of Medicine, Seoul; Departments of ²Oncology; ³Pathology, Asan Medical Center, University of Ulsan College of Medicine, Seoul; ⁴Samsung Cancer Research Institute, Samsung Medical Center, Seoul, Korea; ⁵Department of Biostatistics and Bioinformatics, Duke University, Durham, USA; ⁶Department of Pathology; ⁷Division of Hematology-Oncology, Department of Medicine, Samsung Medical Center, Sungkyunkwan University School of Medicine, Seoul, Korea



Teşekkürler



25. Ulusal Patoloji Kongresi
6. Sitopatoloji Kongresi

14 - 17 Ekim 2015 / Merinos AKKM - BURSA

