

# EKTOPIK MENİNGOTELYAL HAMARTOMDA MORFOLOJİK ÇEŞİTLİLİK: 5 OLGU SUNUMU

Dr. Emine Bilge Aynı  
İstanbul Üniversitesi İstanbul Tıp Fakültesi  
Patoloji Anabilim Dalı

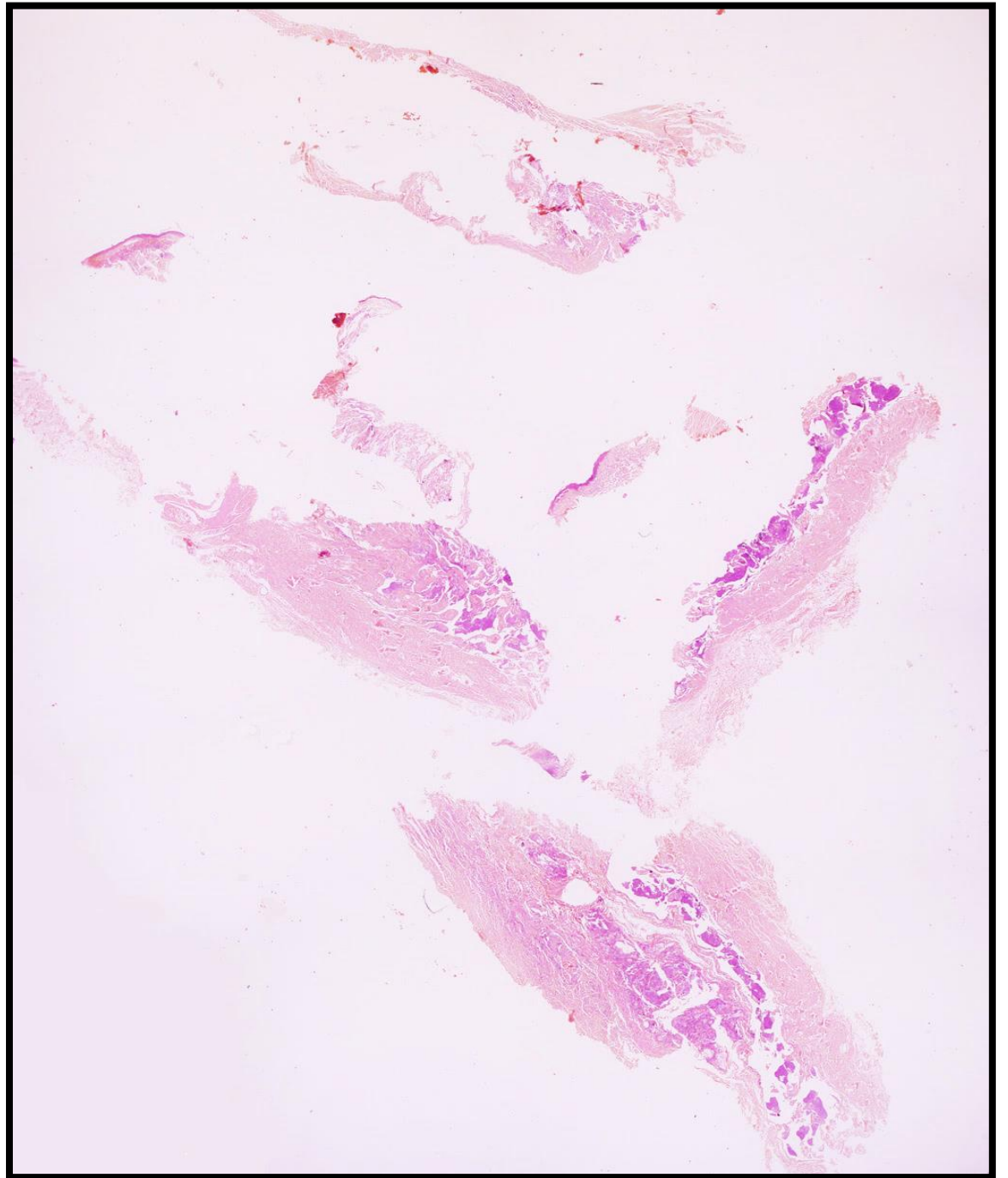


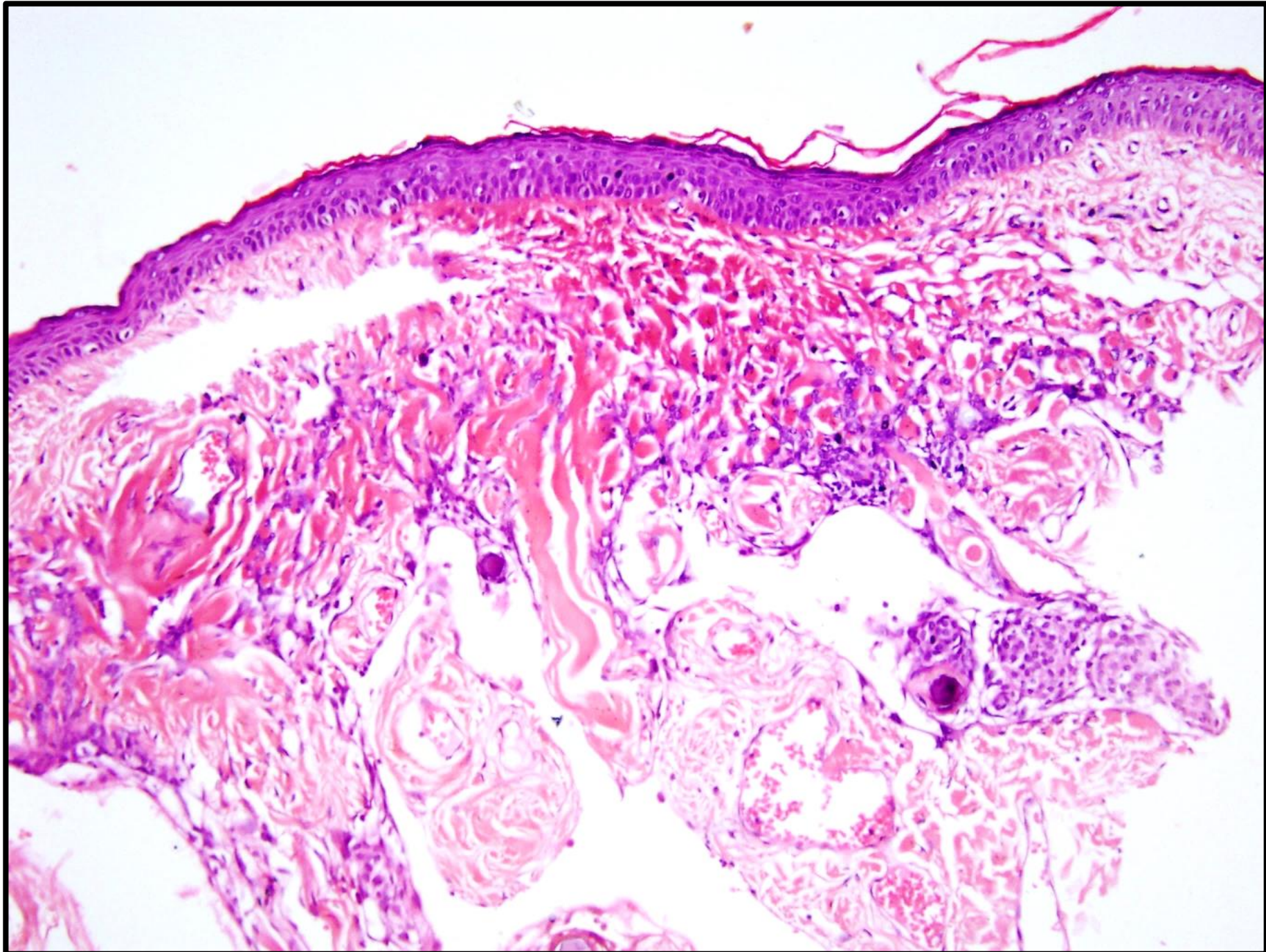
	YAŞ	CİNSİYET	LOKALİZASYON
<b>1.Olgu</b>	3 yaş	Erkek	Frontal bölge
<b>2.Olgu</b>	3 yaş	Erkek	Oksipital bölge
<b>3.Olgu</b>	1 yaş	Kız	Oksipital bölge
<b>4.Olgu</b>	9 gün	Erkek	Sakral bölge
<b>5.Olgu</b>	10 yaş	Kız	Boyun arka orta hat

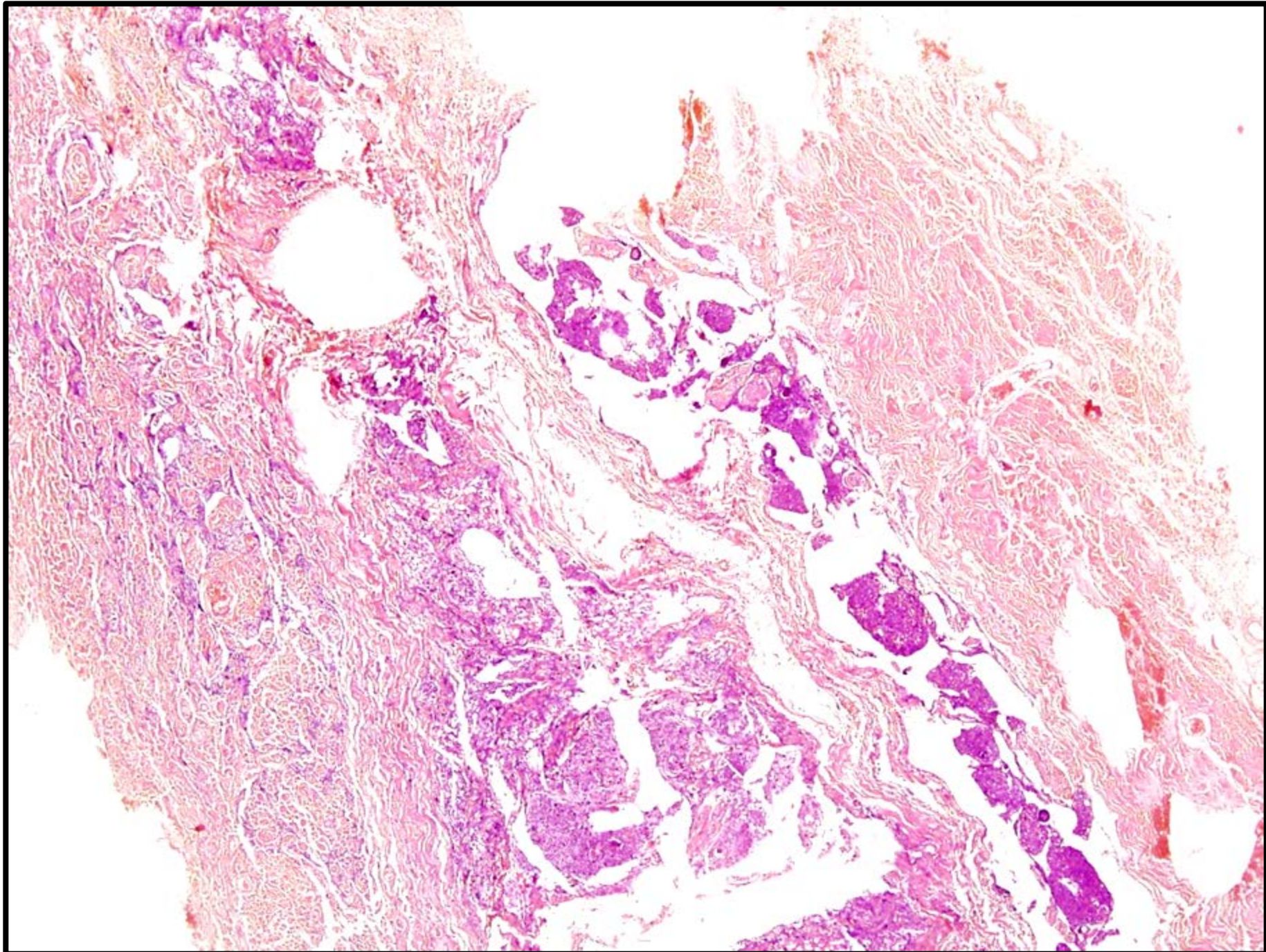
❖ Tüm olgular konjenital

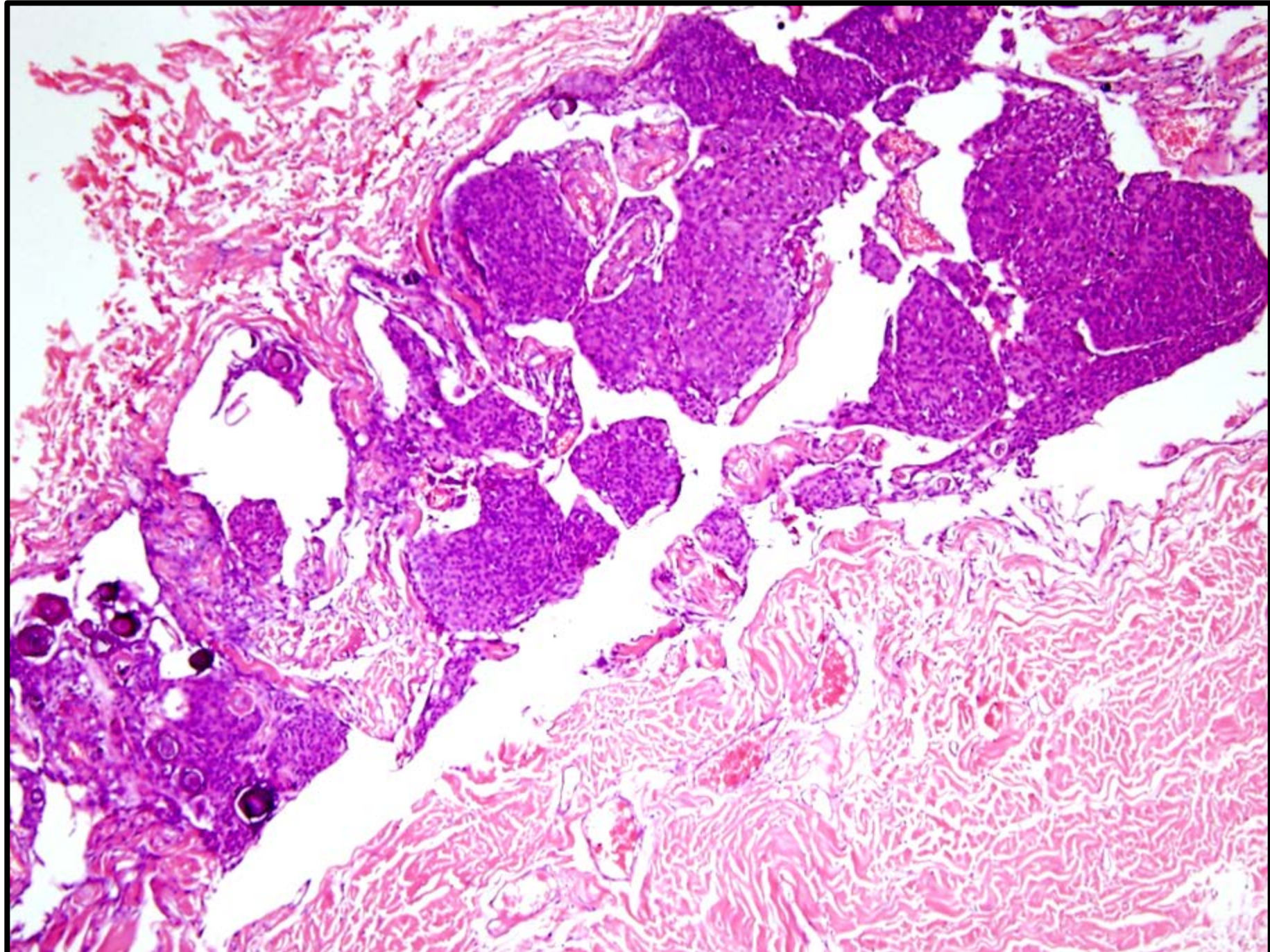
# 1.OLGU:

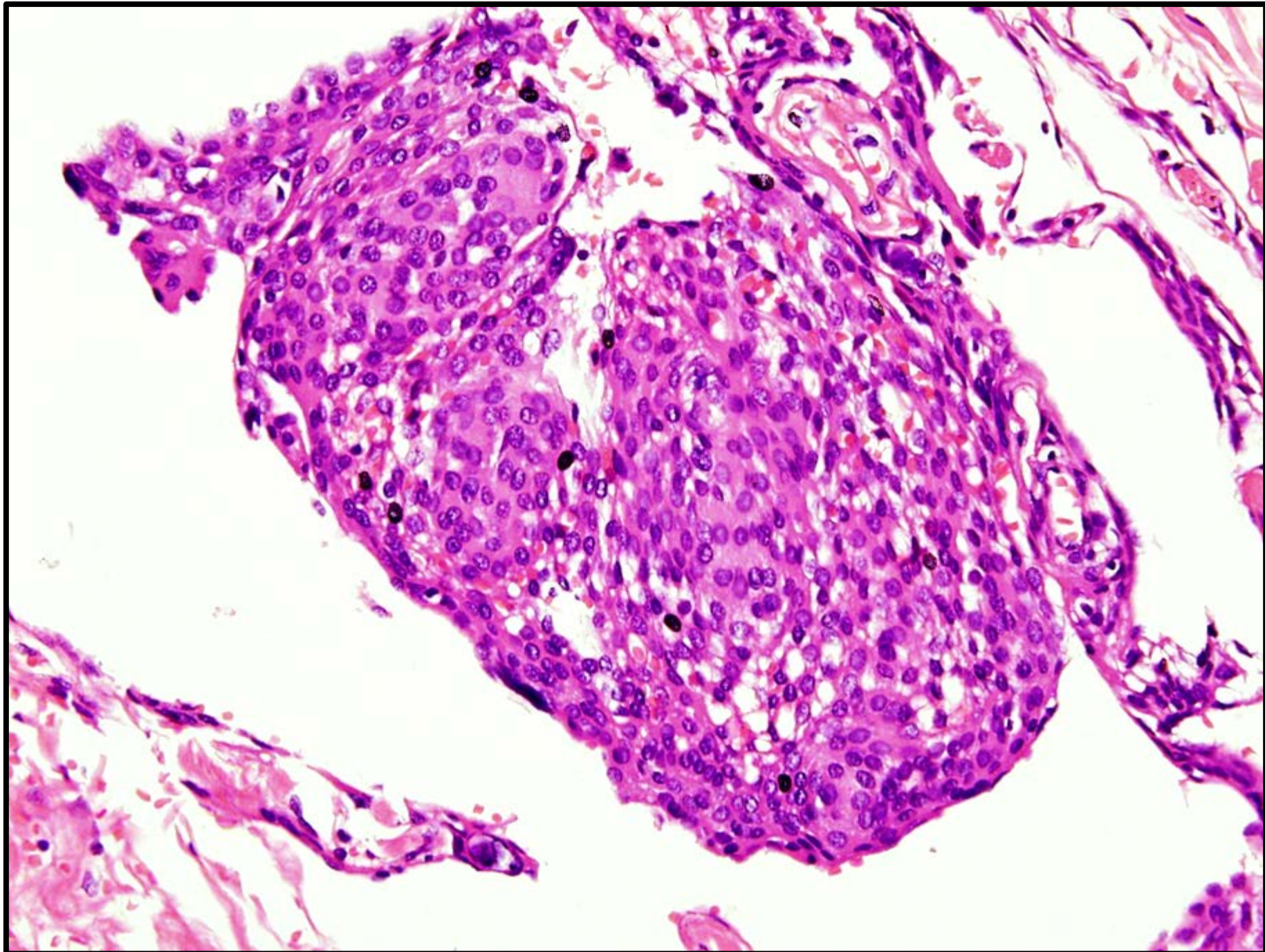
- 3 yaşında, erkek
- Doğuştan itibaren mevcut, sol frontal bölgede, 3x1 cm boyutlarında, pembe renkli, ortasında yara olan lezyon.

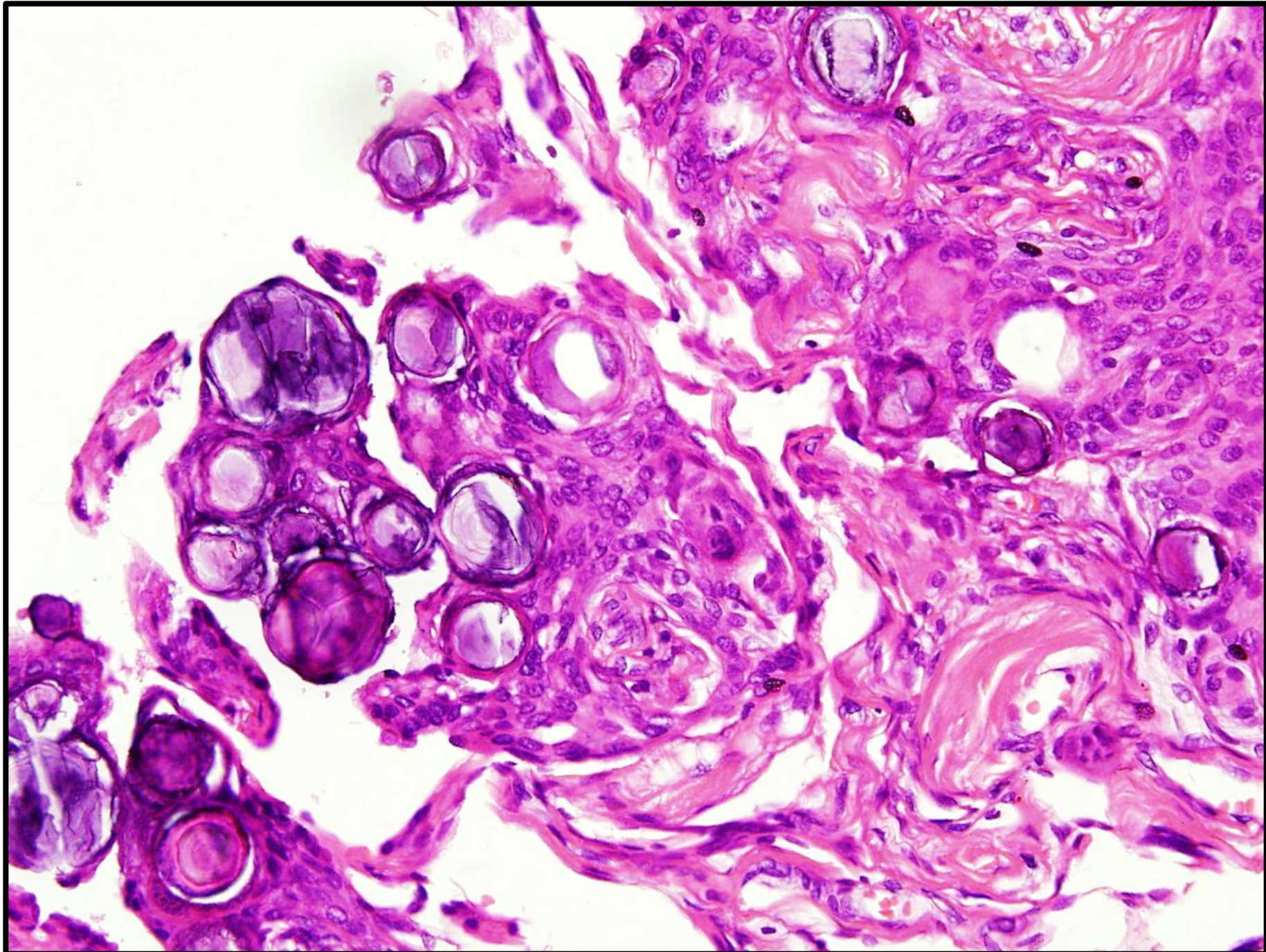








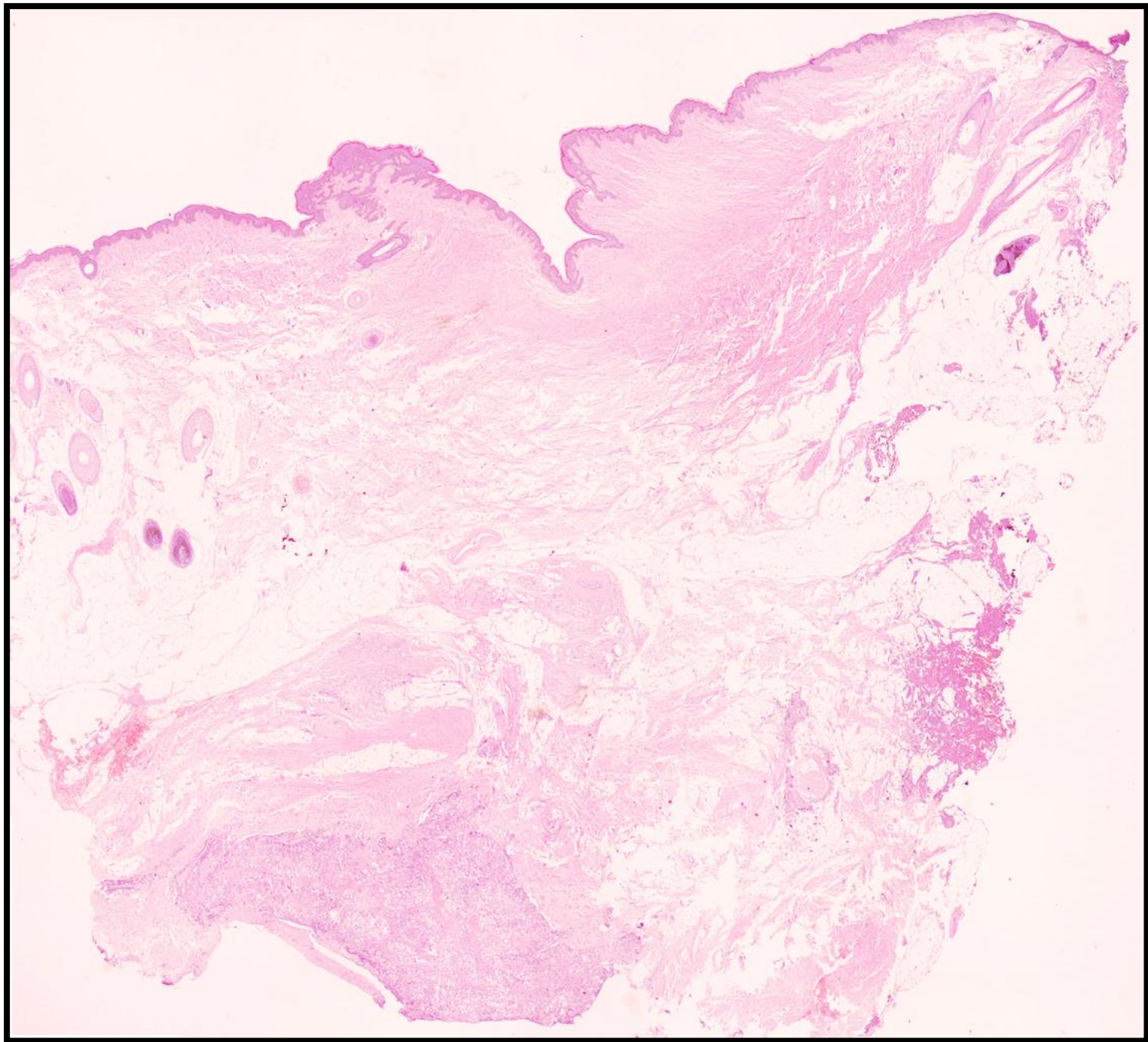


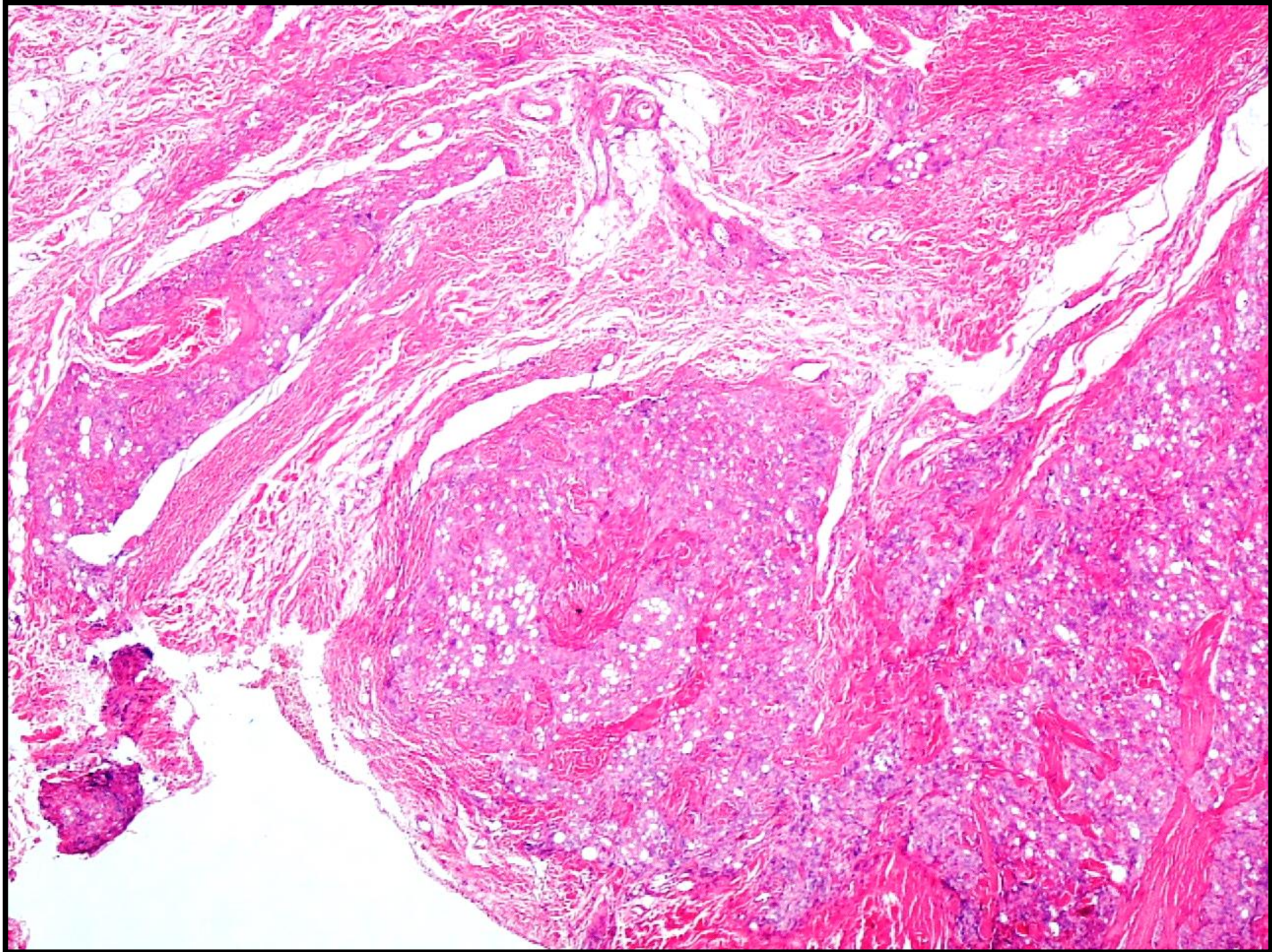


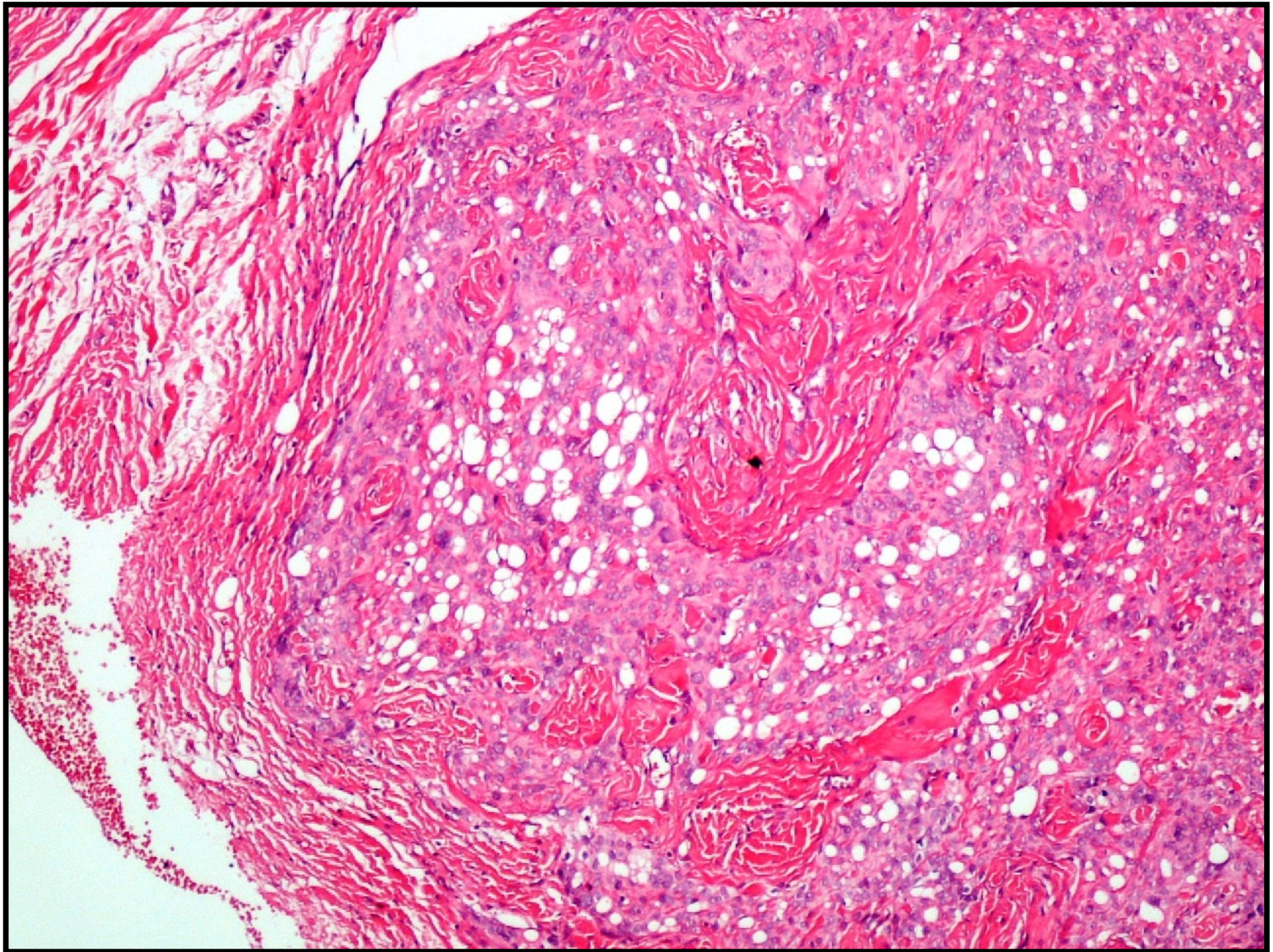


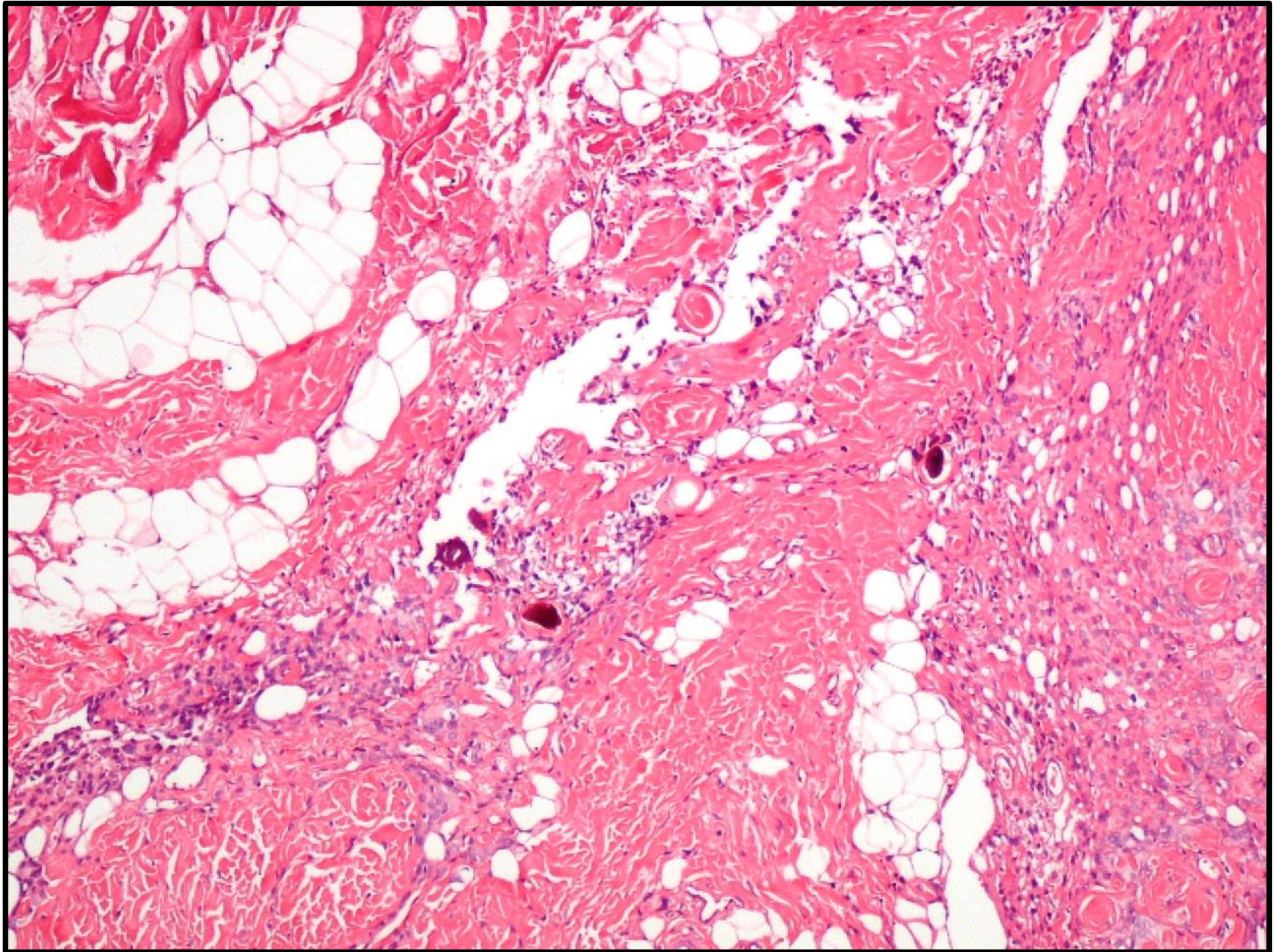
## 2.OLGU:

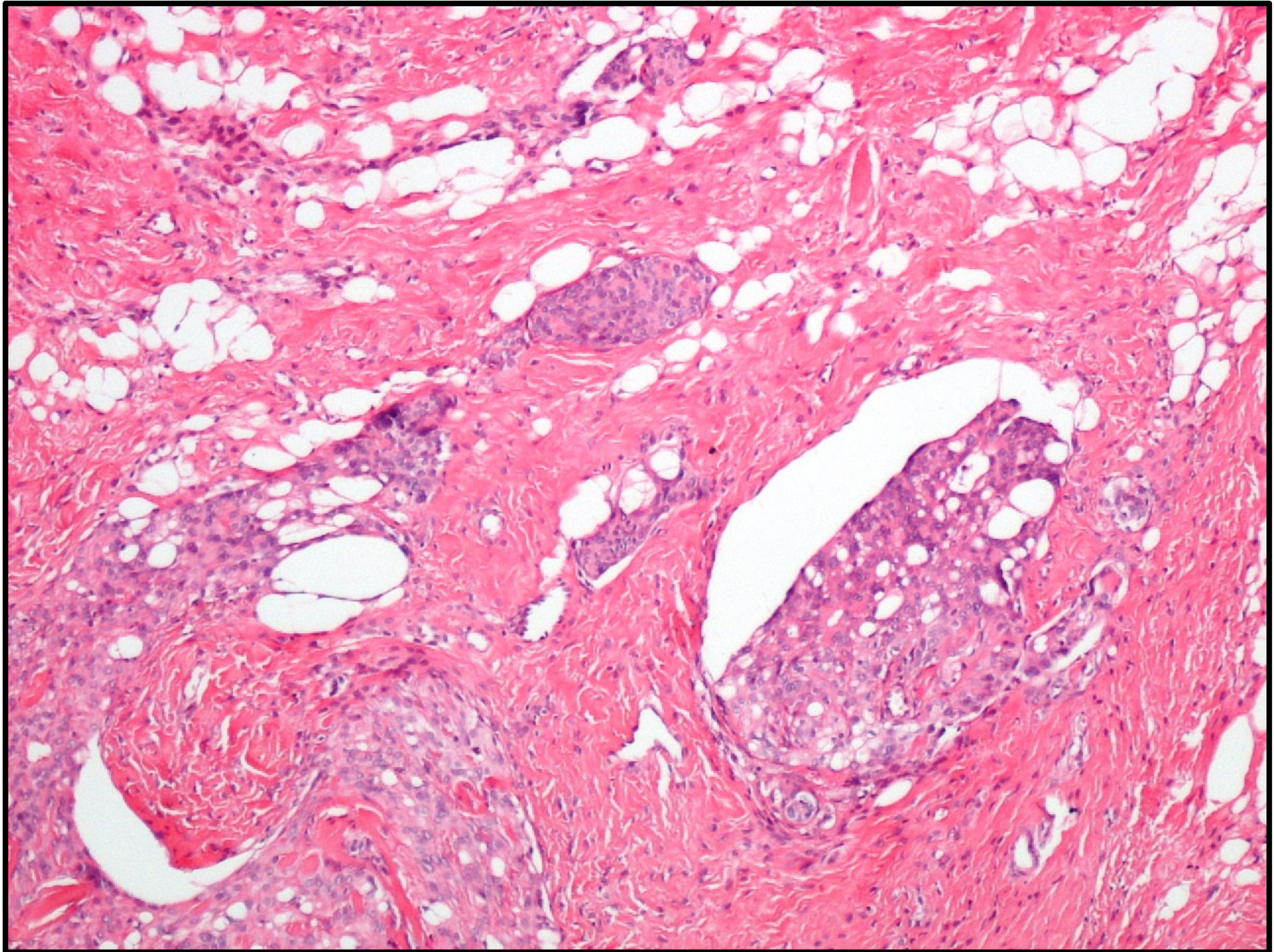
- 3 yaşında, erkek
- Dođuřtan itibaren mevcut, oksipital bölgede yerleşim gösteren, 3 cm çapında palpasyonla ele gelen kitle







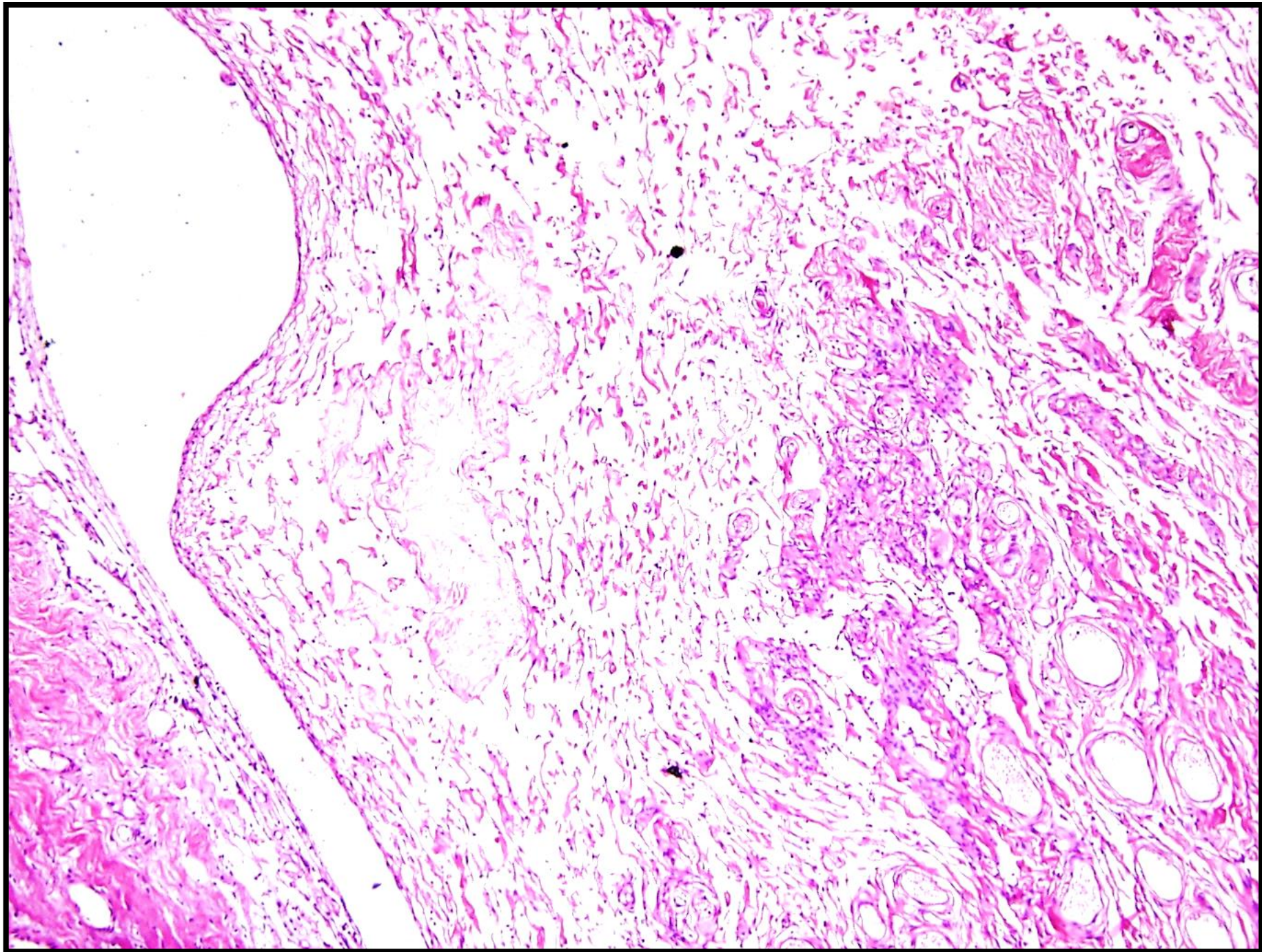




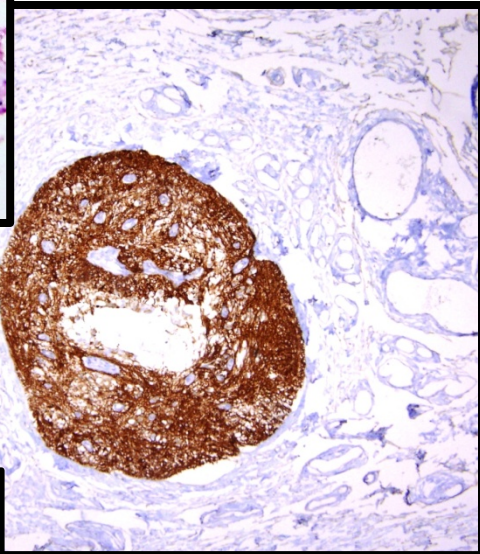
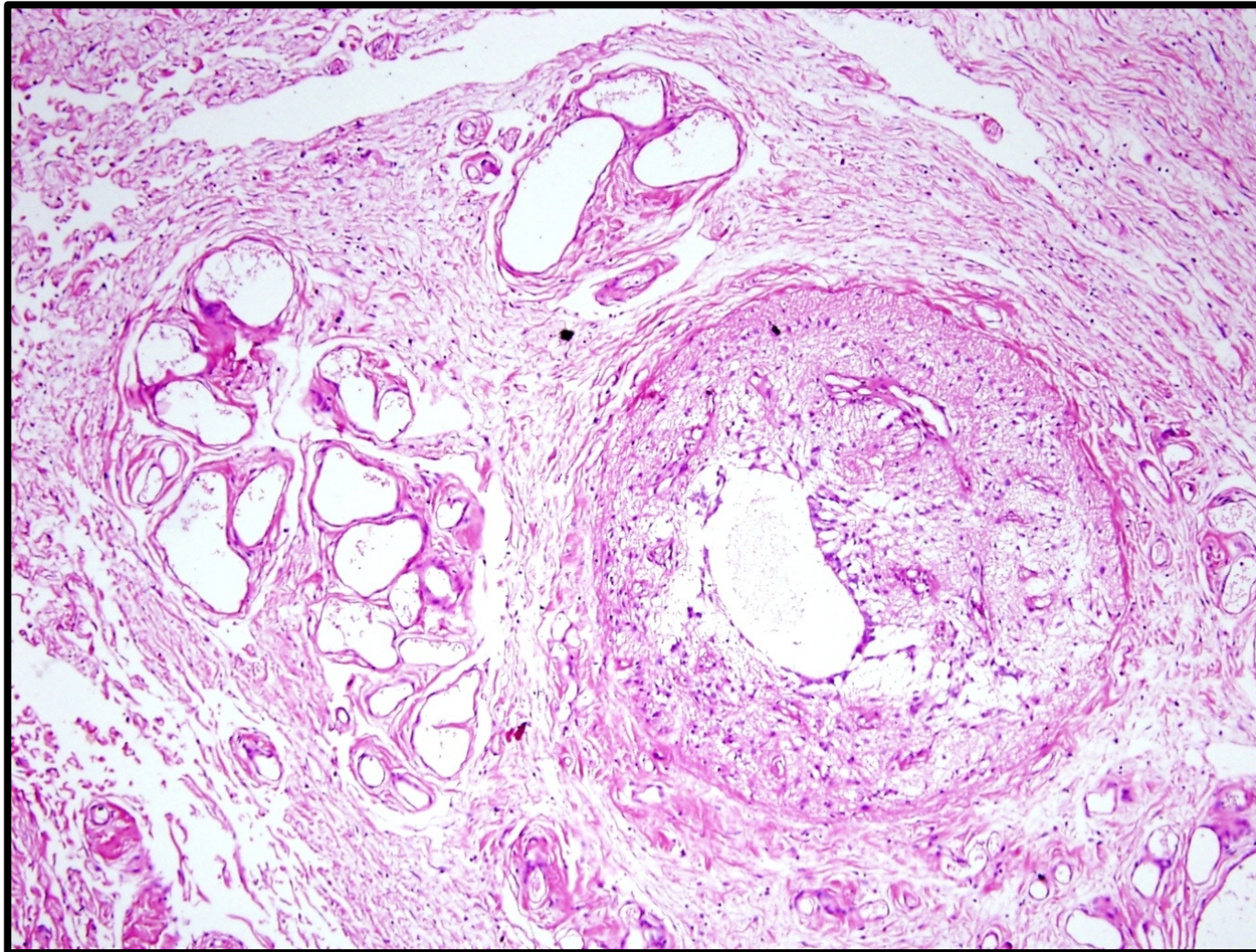
## 3.OLGU:

- 1 yaşında, kız
- Oksipital meningesel ön tanı

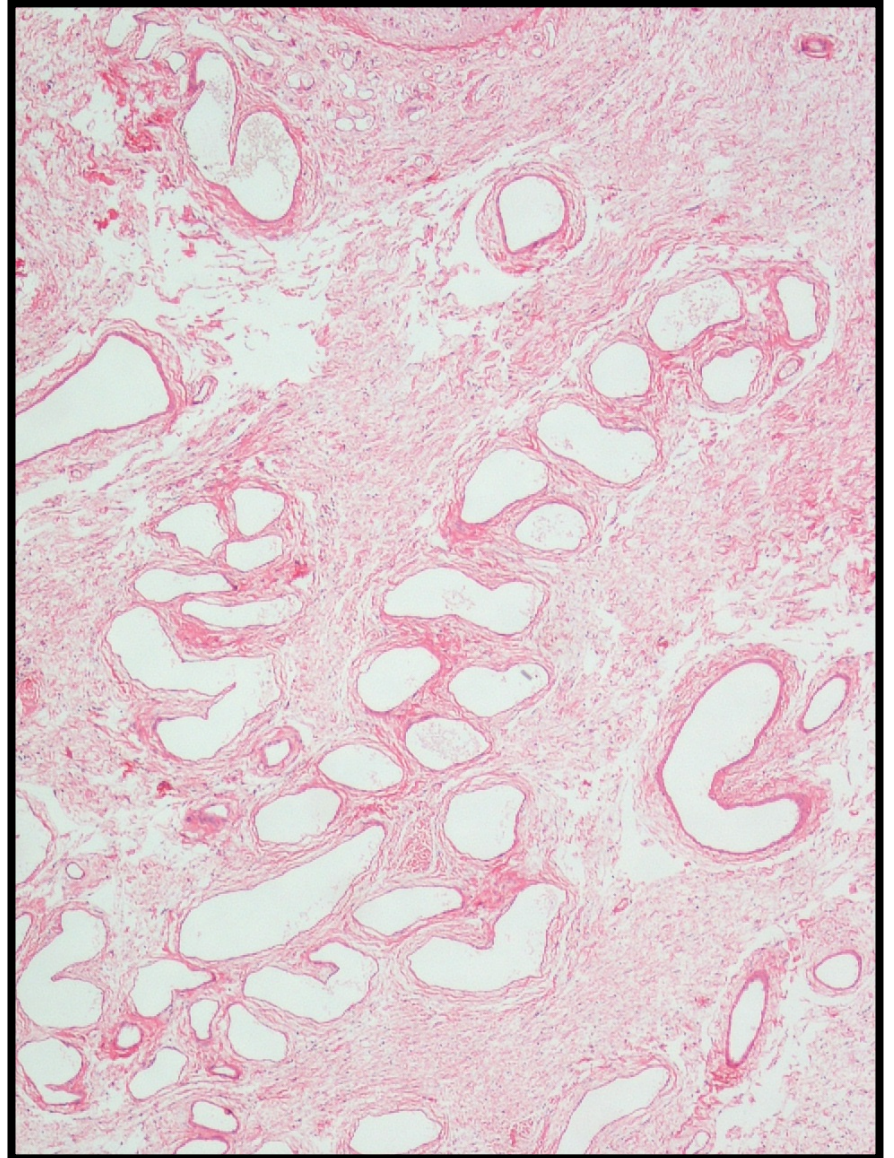
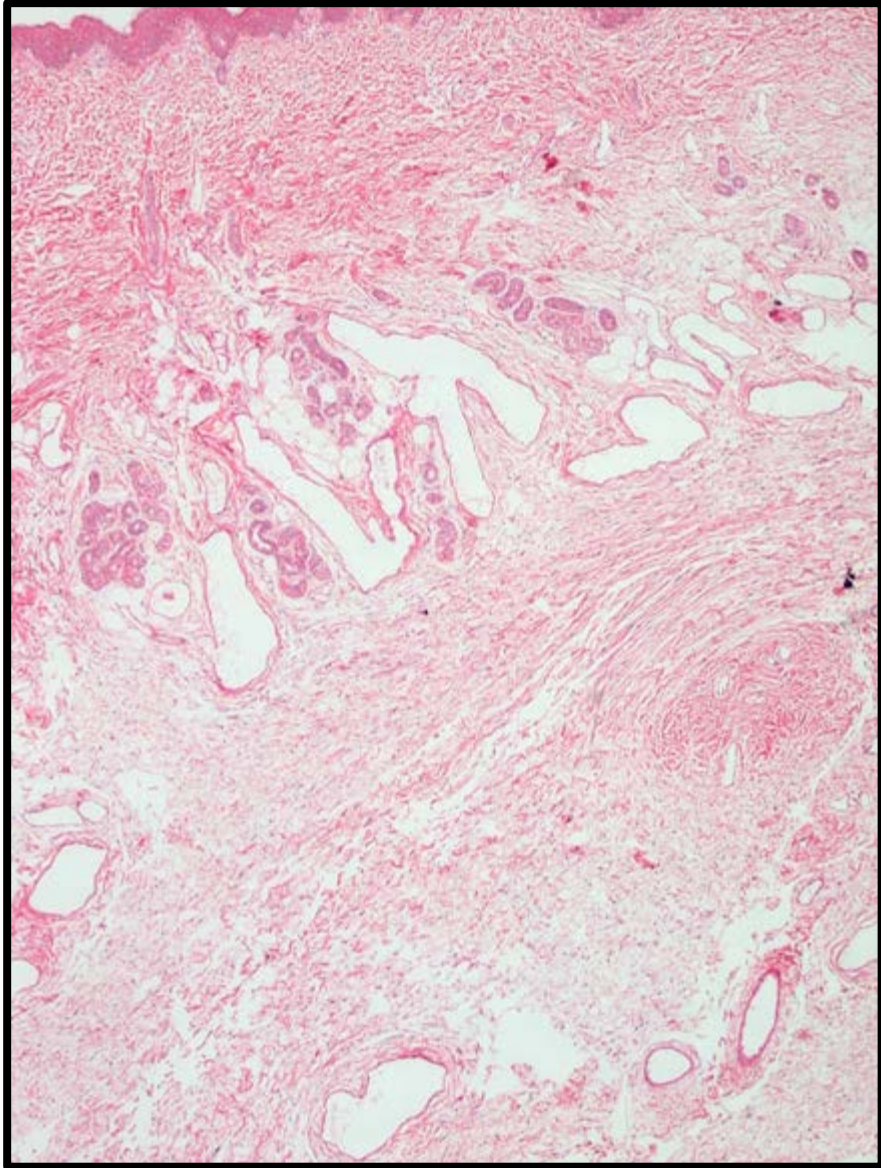


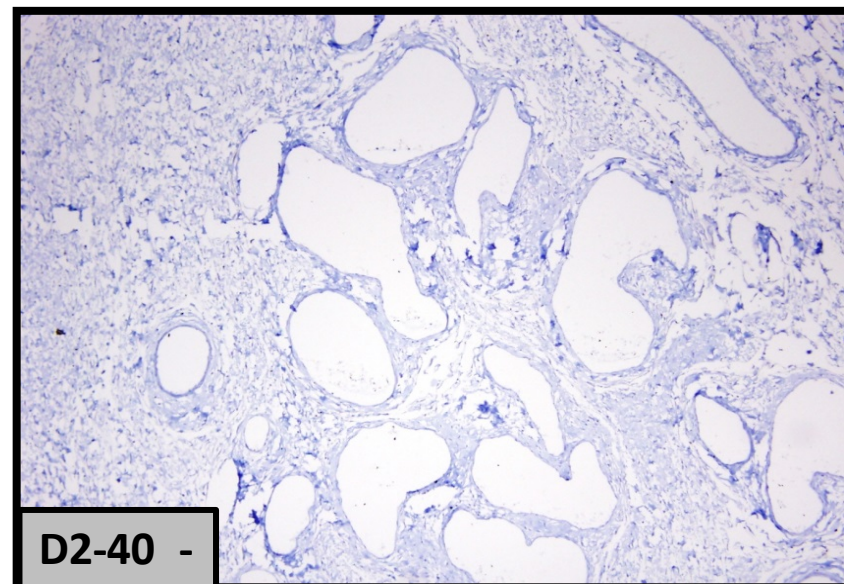
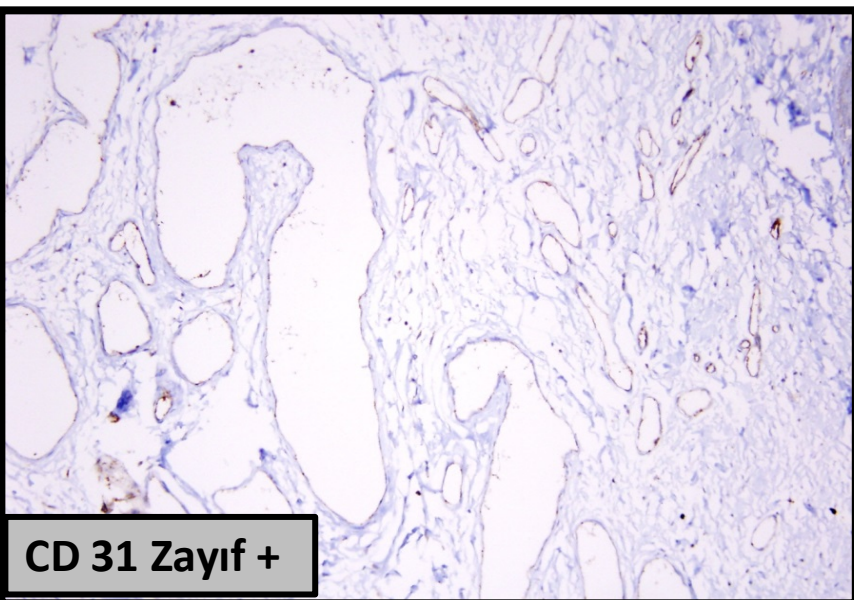
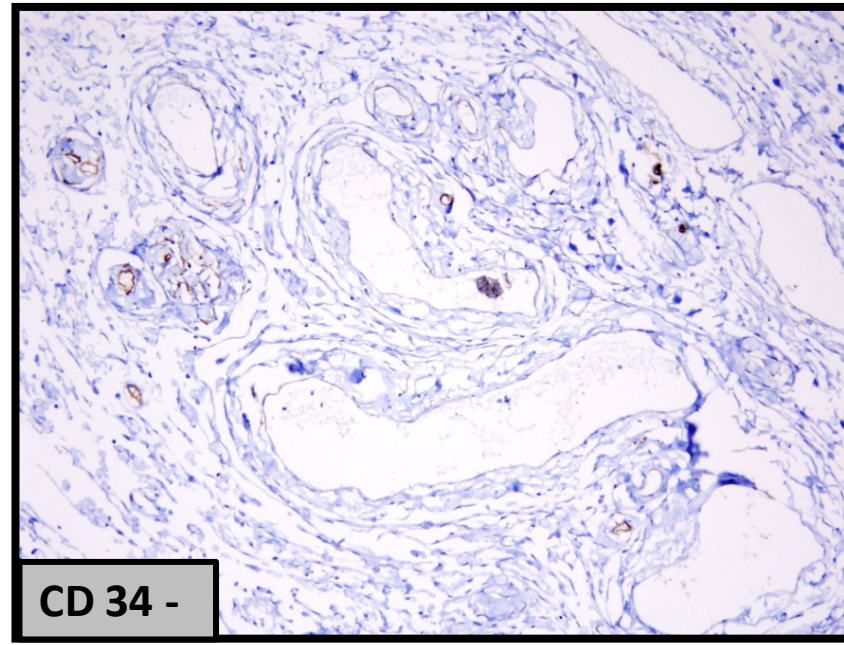
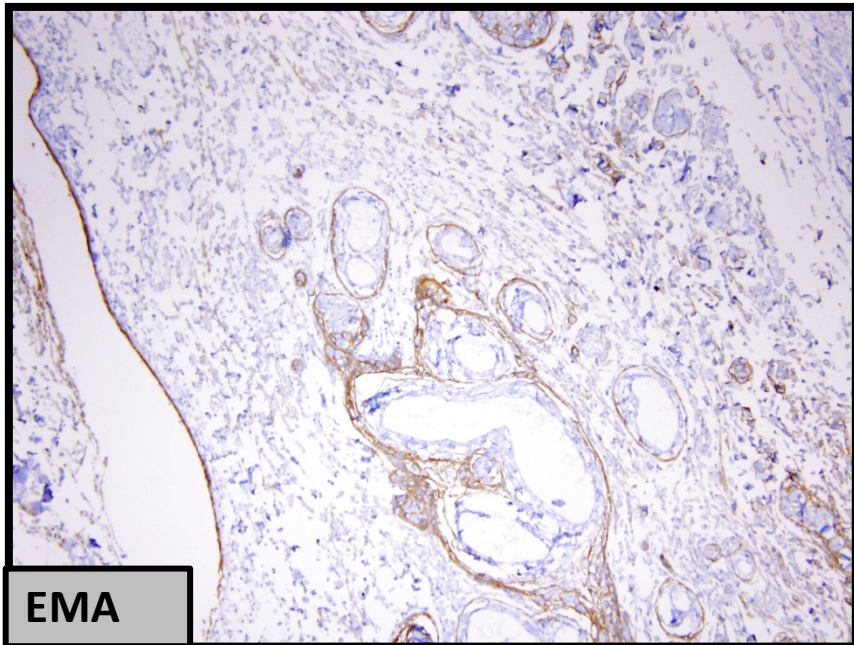






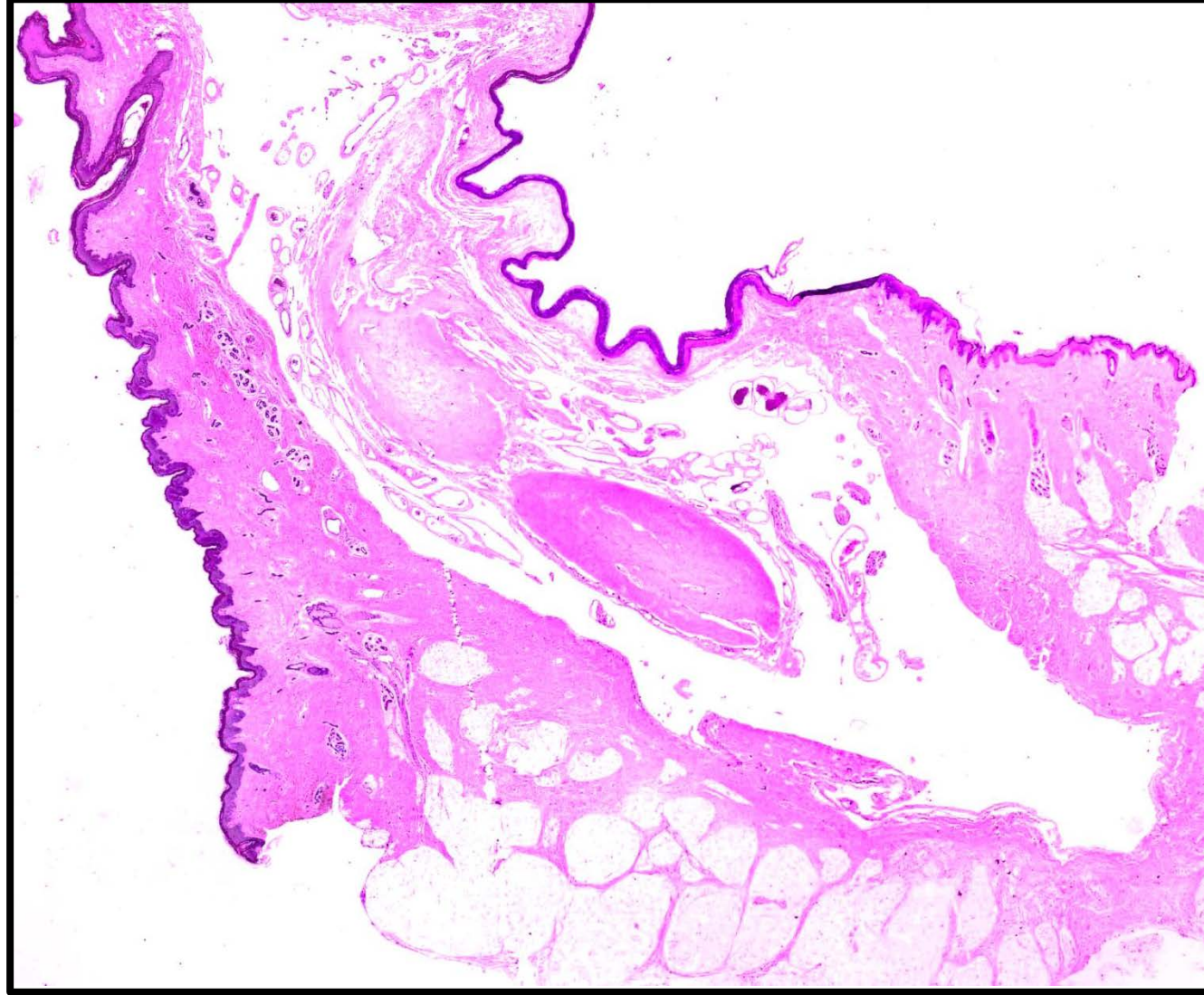
**GFAP**

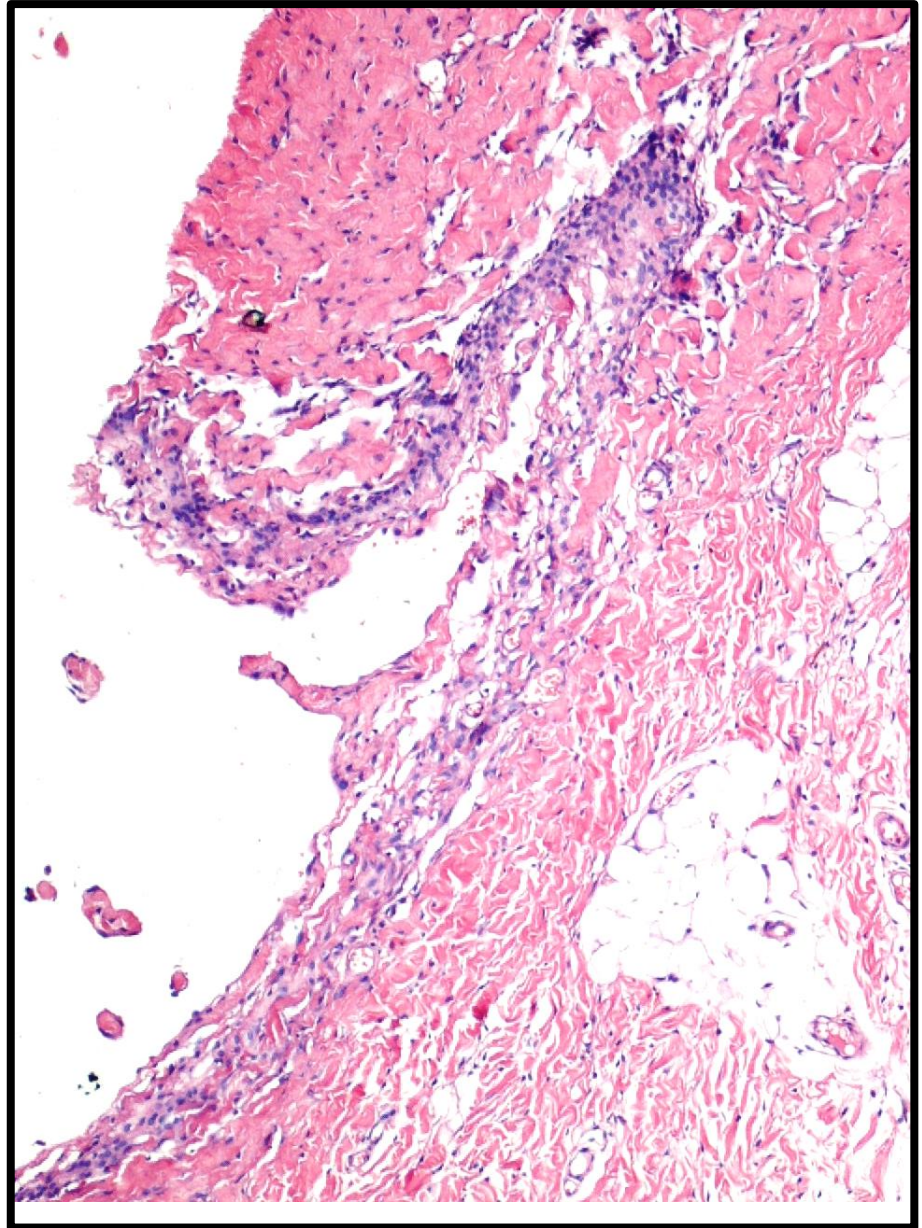
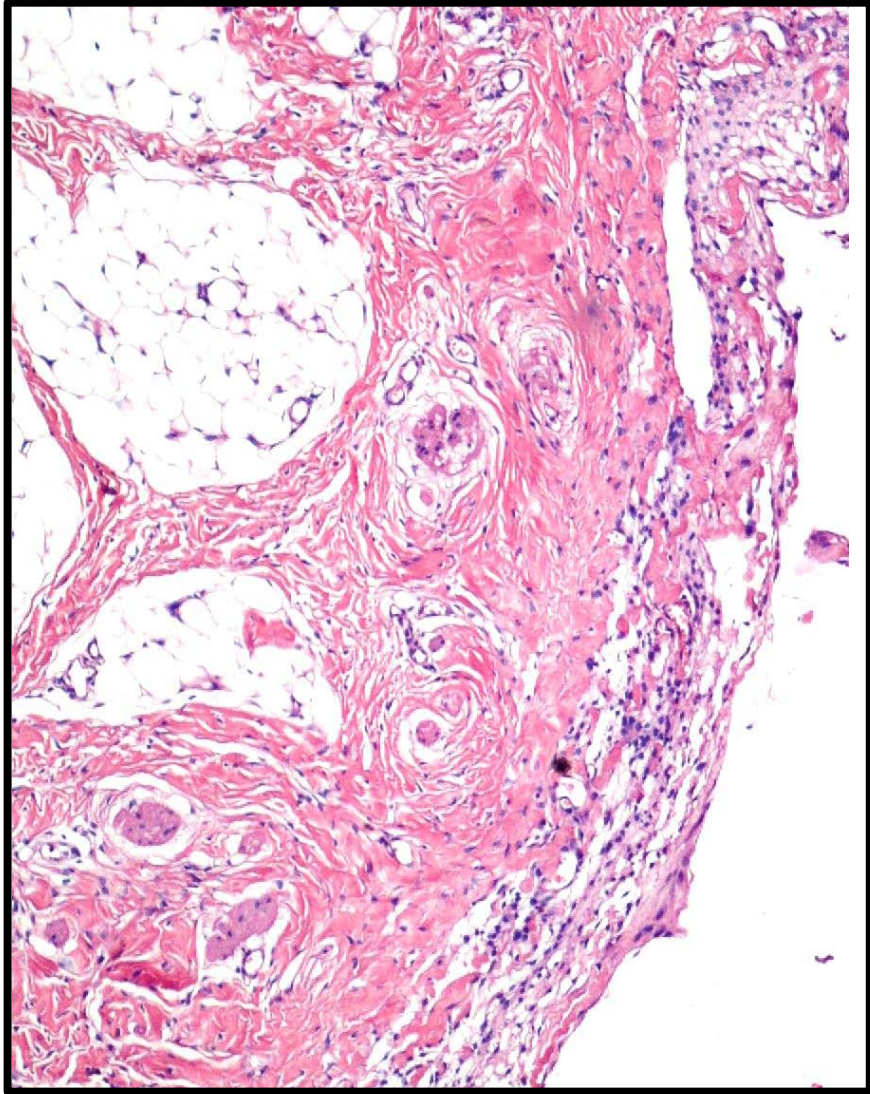


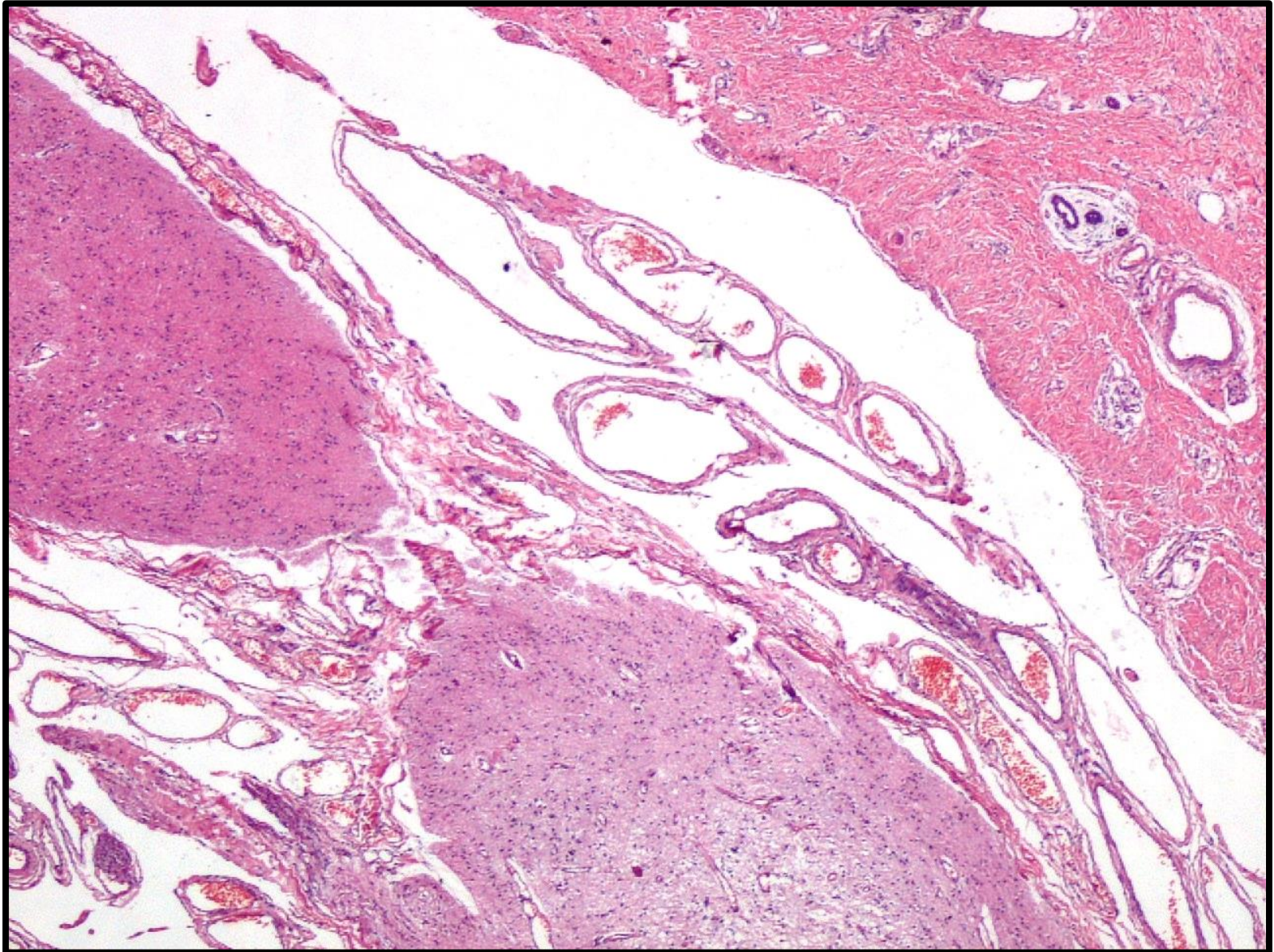


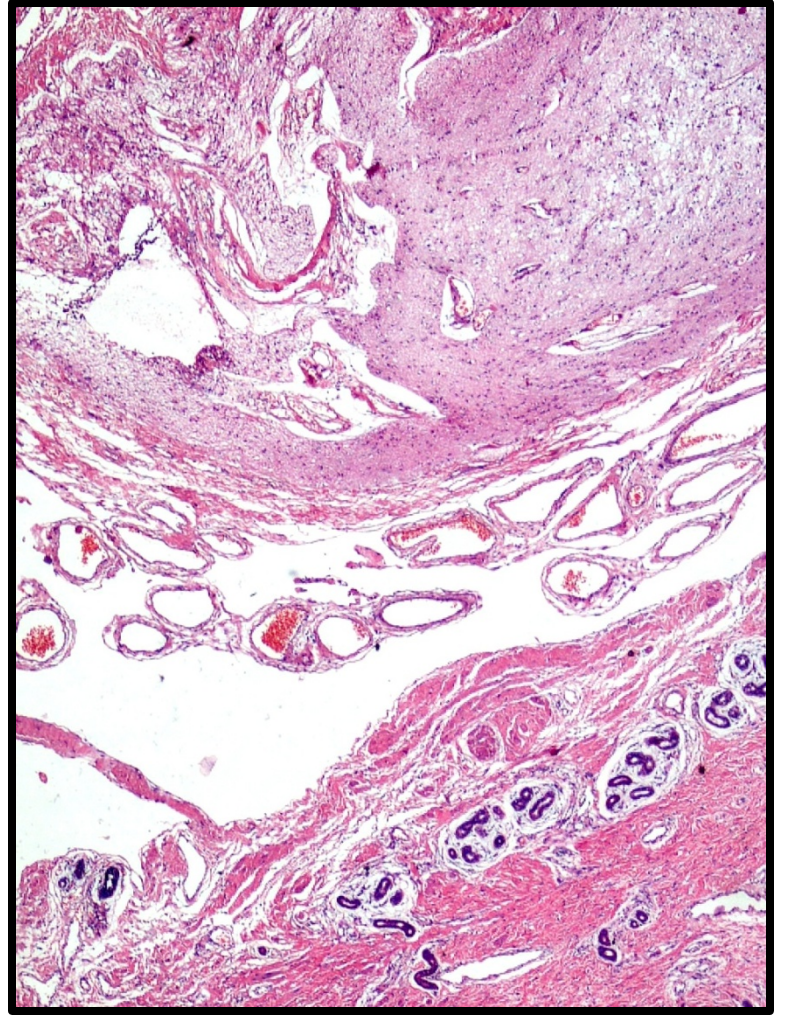
## 4.OLGU:

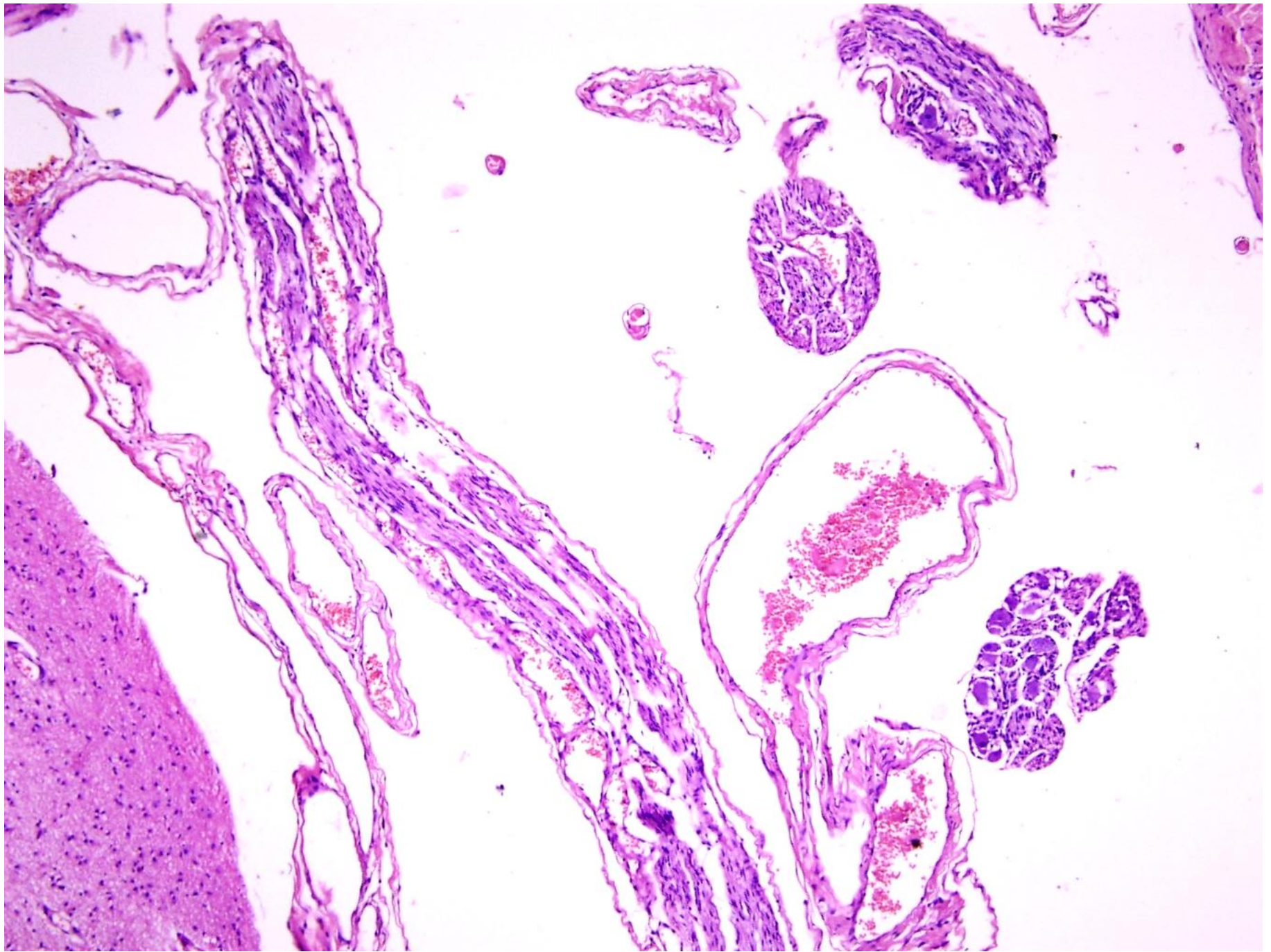
- 9 günlük, erkek
- Doğuştan itibaren sakral bölgede 2x2 cm boyutlarında kitle.



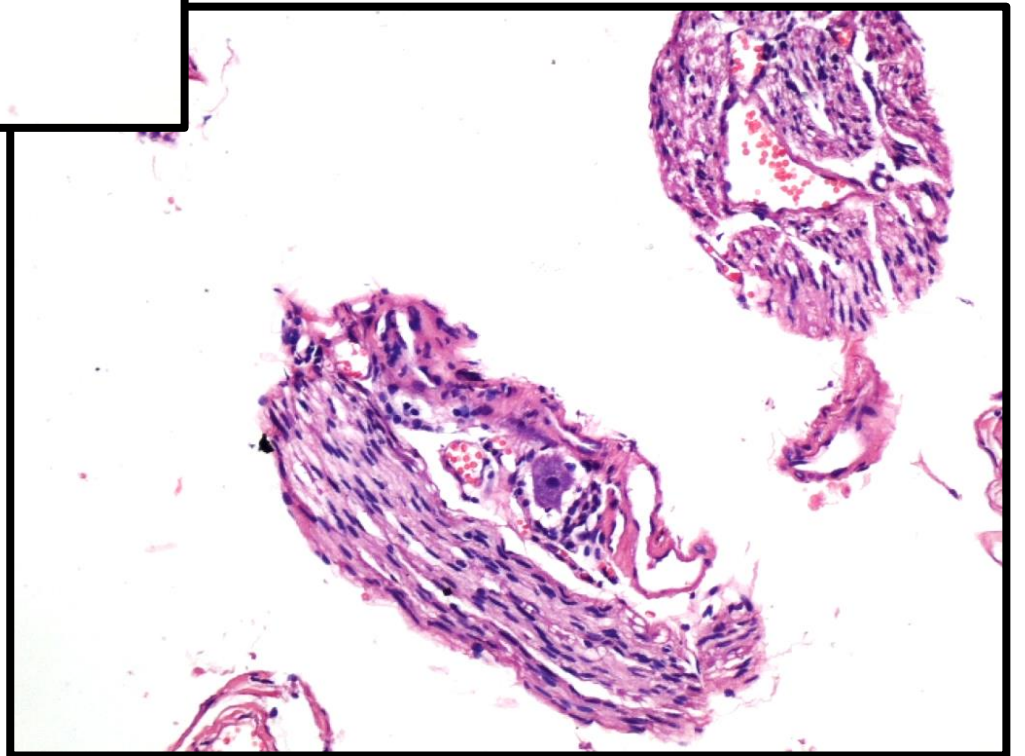
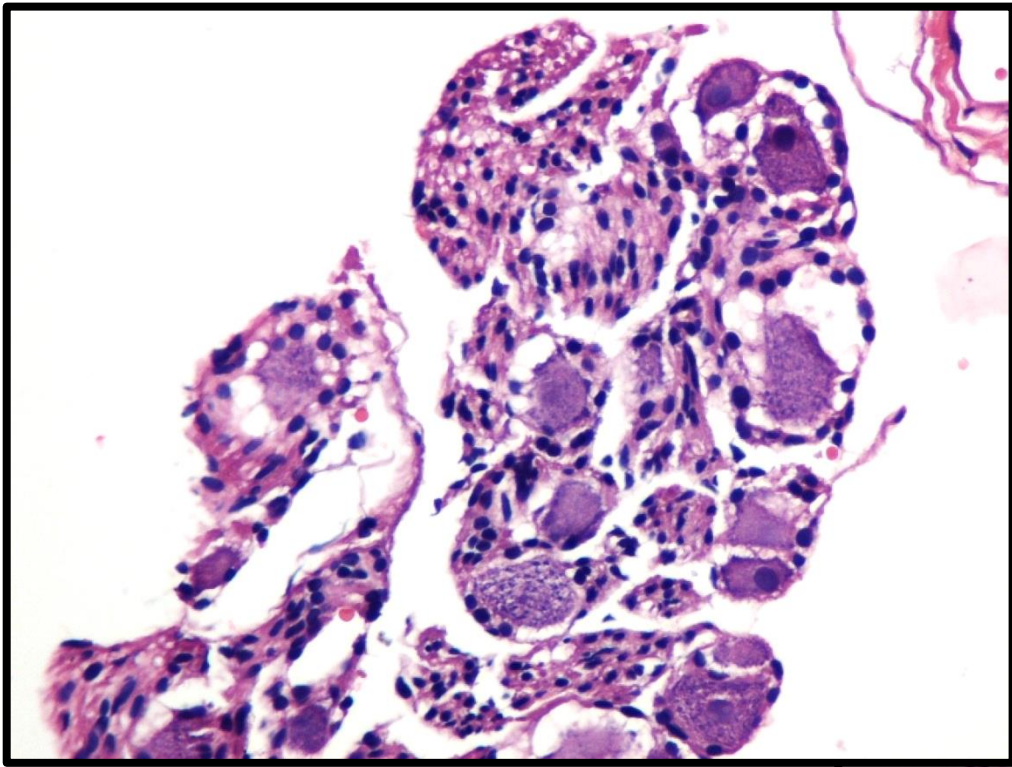


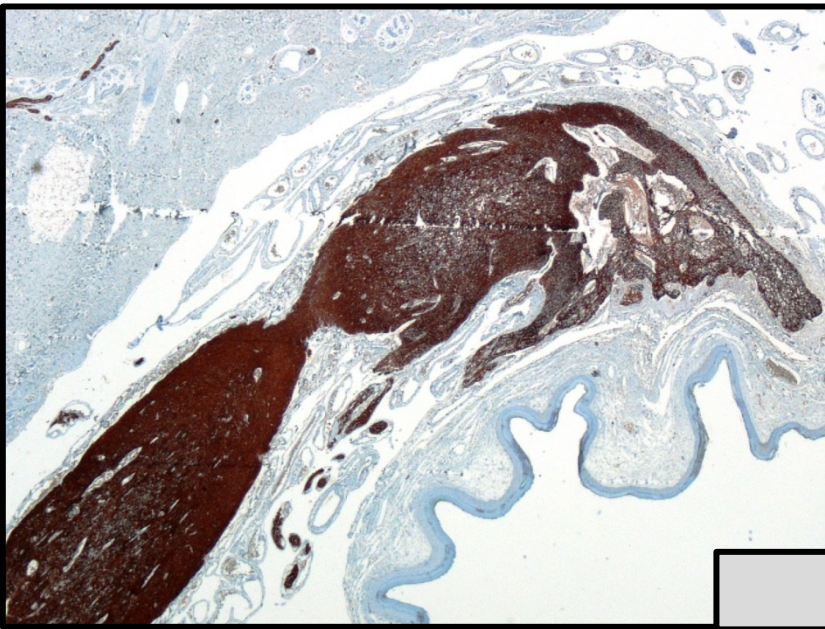




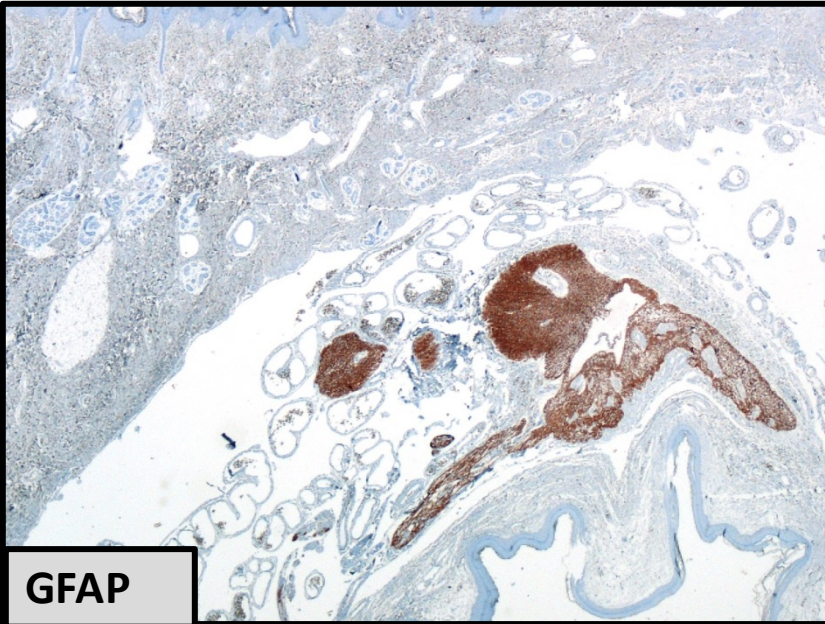




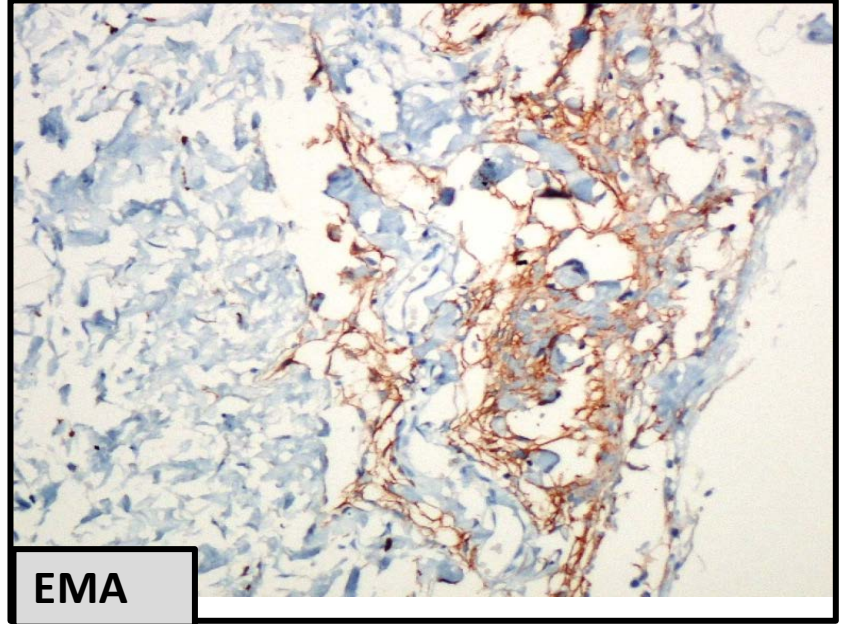




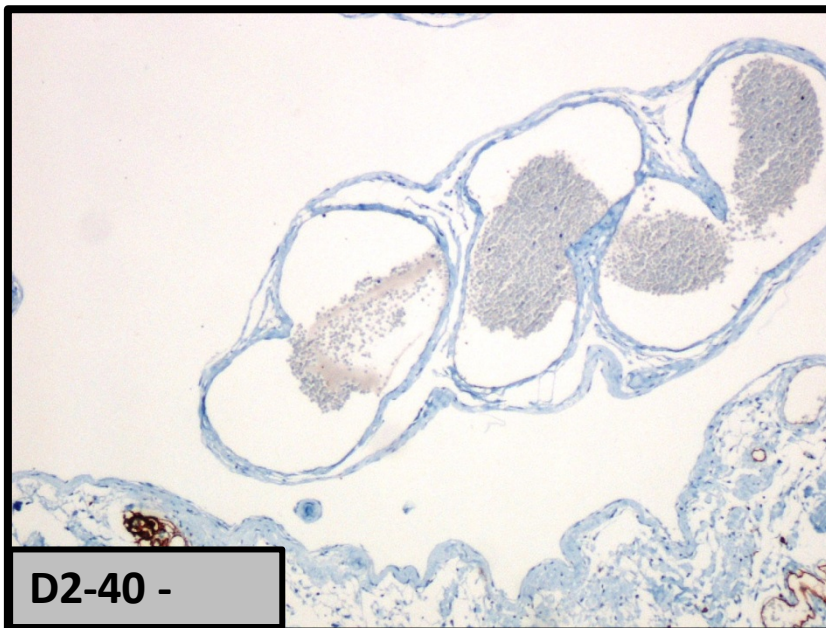
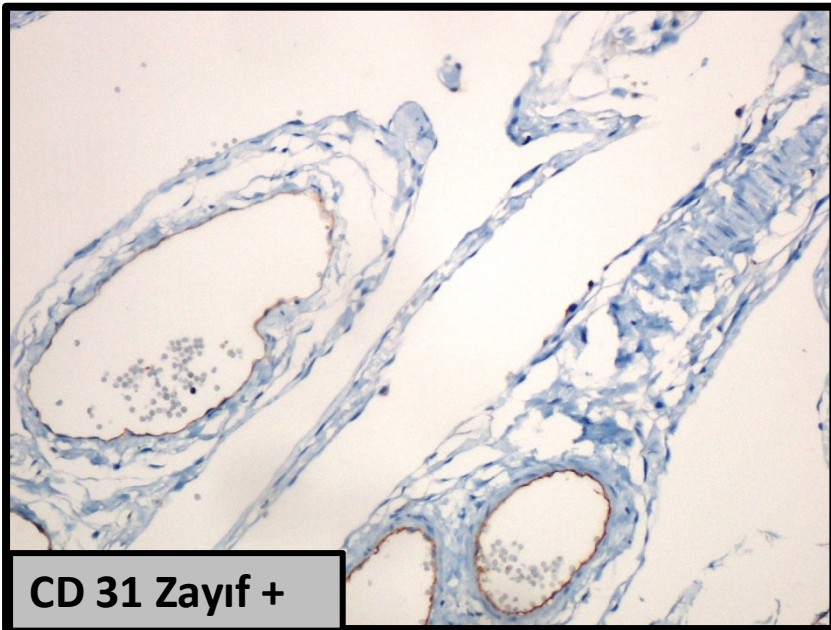
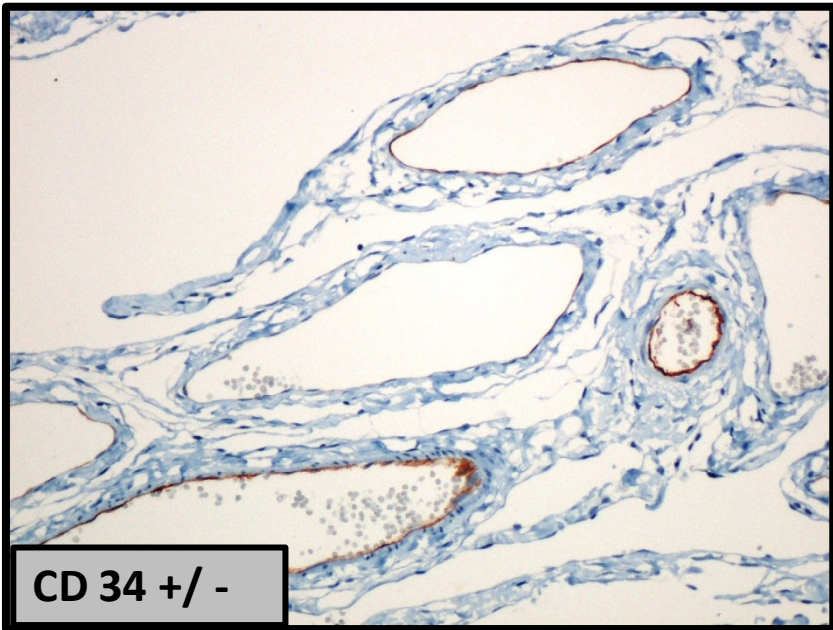
S 100



GFAP

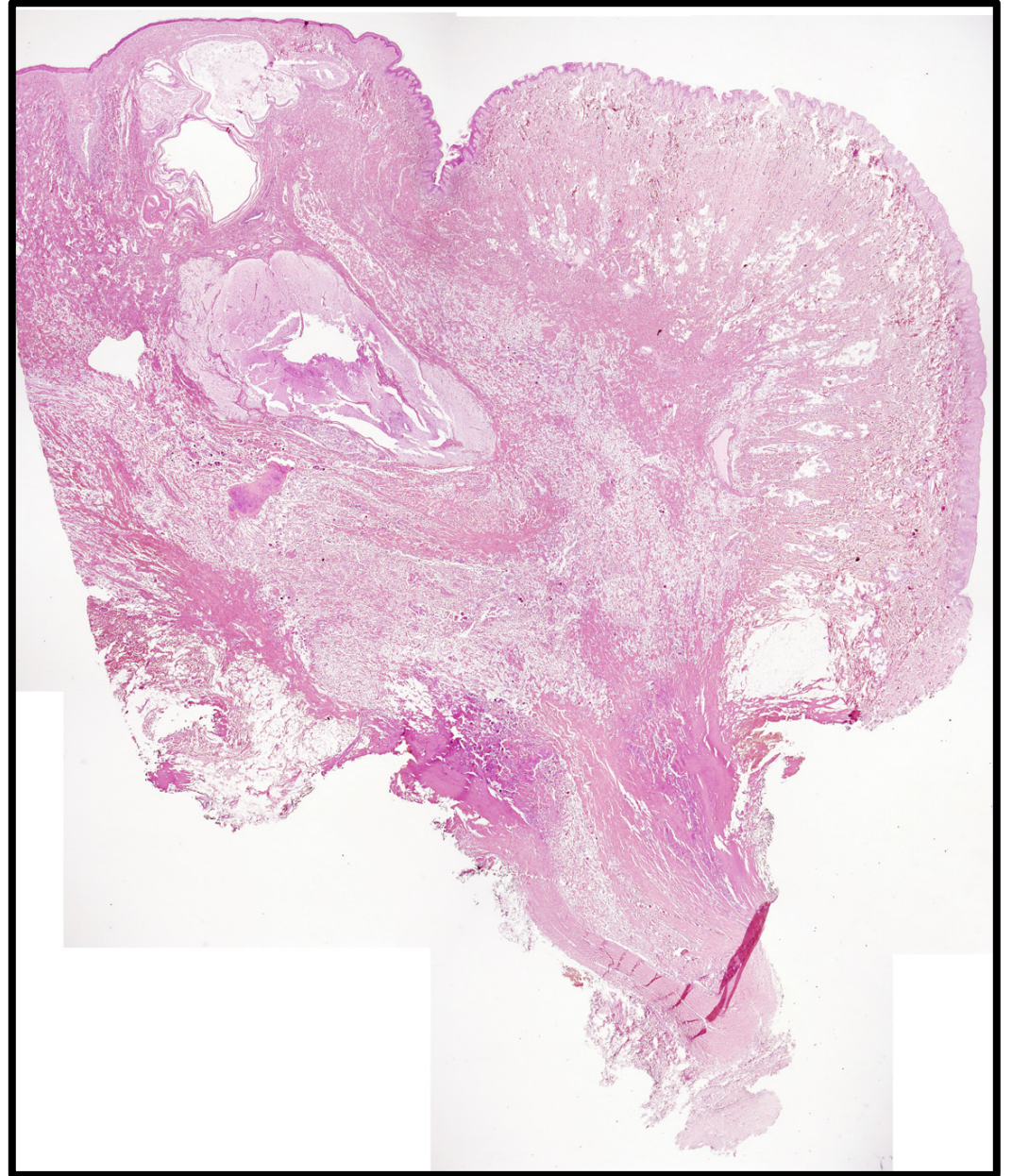


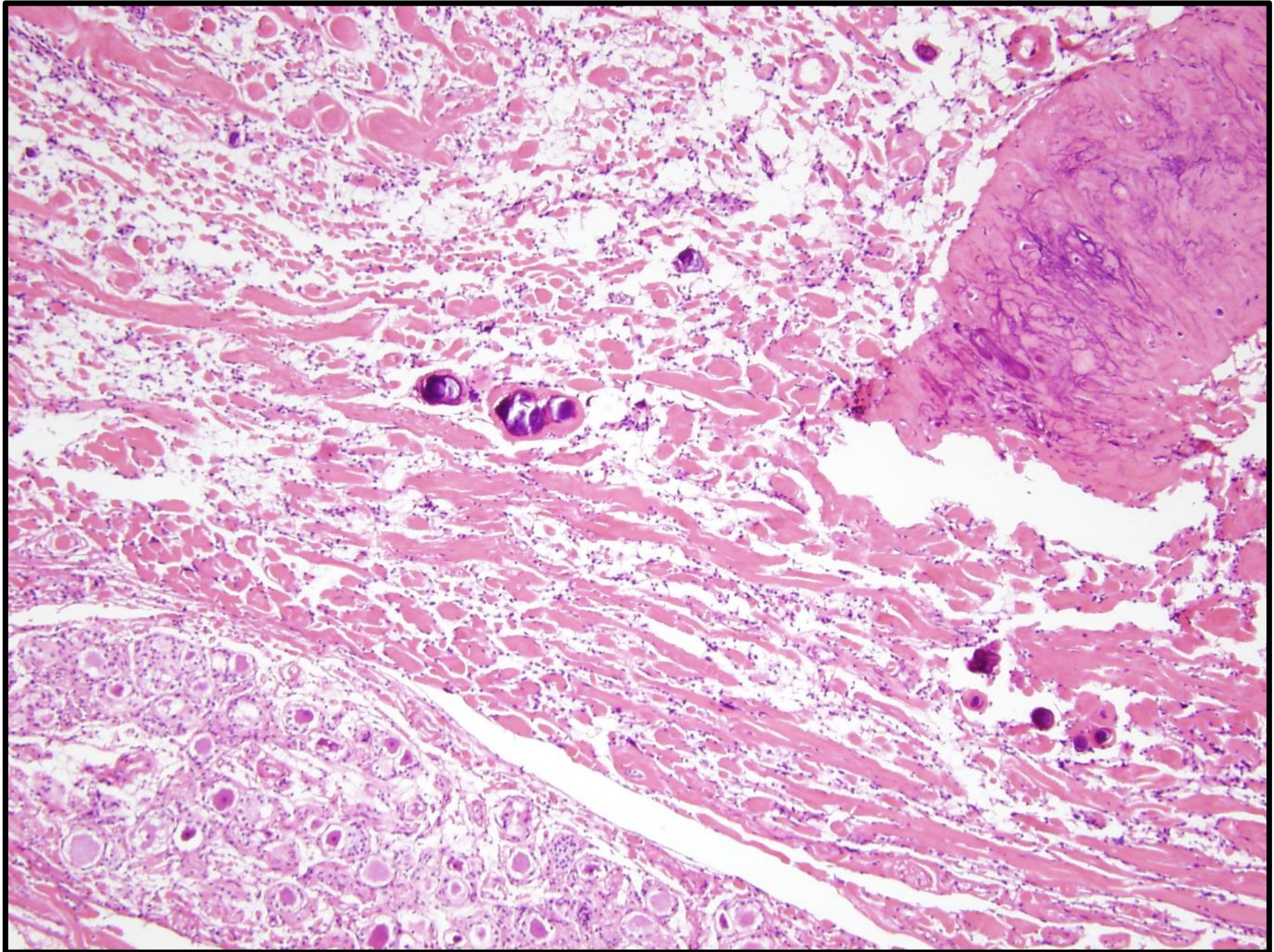
EMA

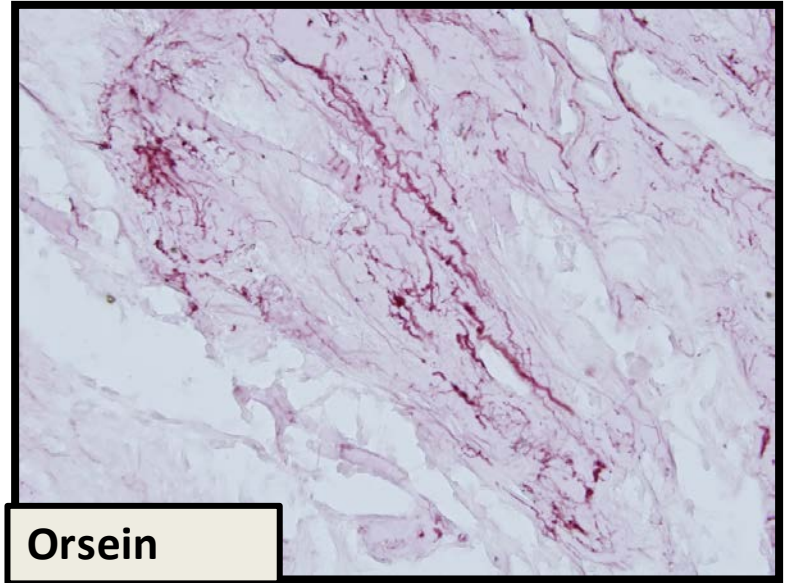
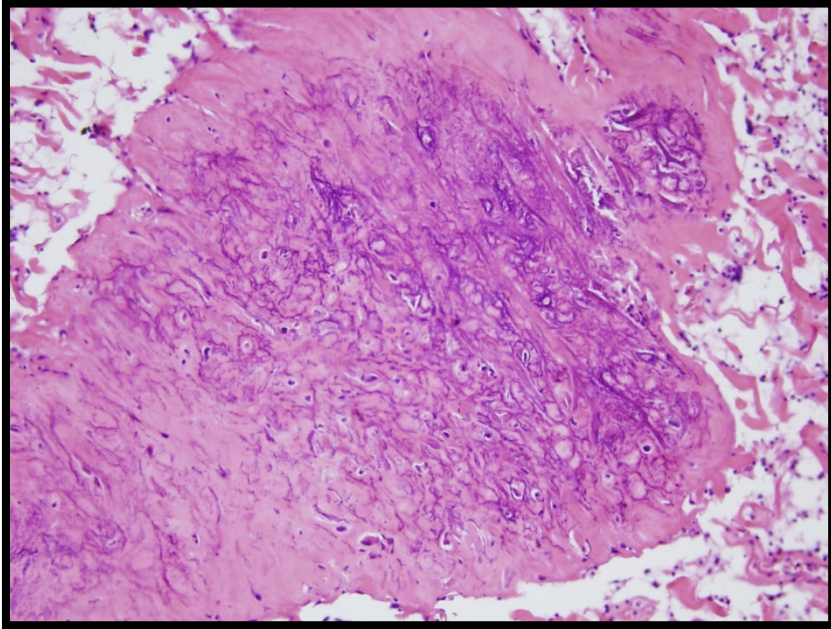


## 5.OLGU:

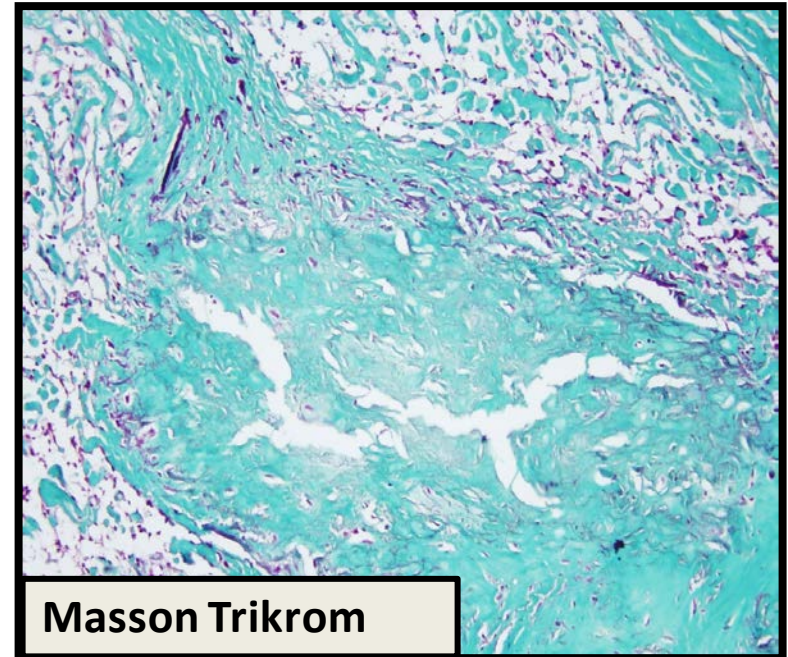
- 10 yaşında, kız
- Doğuştan beri mevcut, **boyun arka orta hatta** şişlik. (Servikal meningoseal ile uyumlu kese)



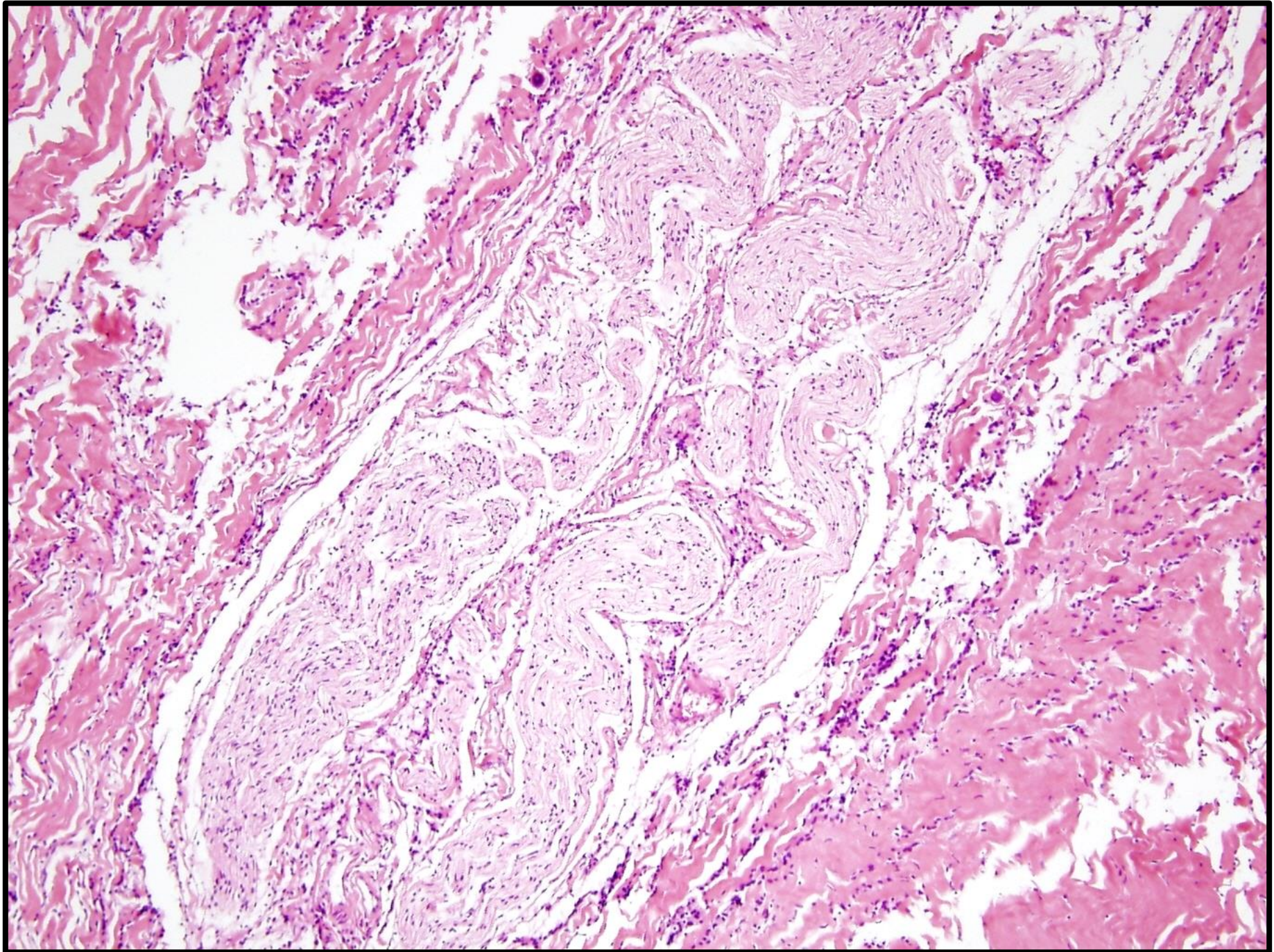


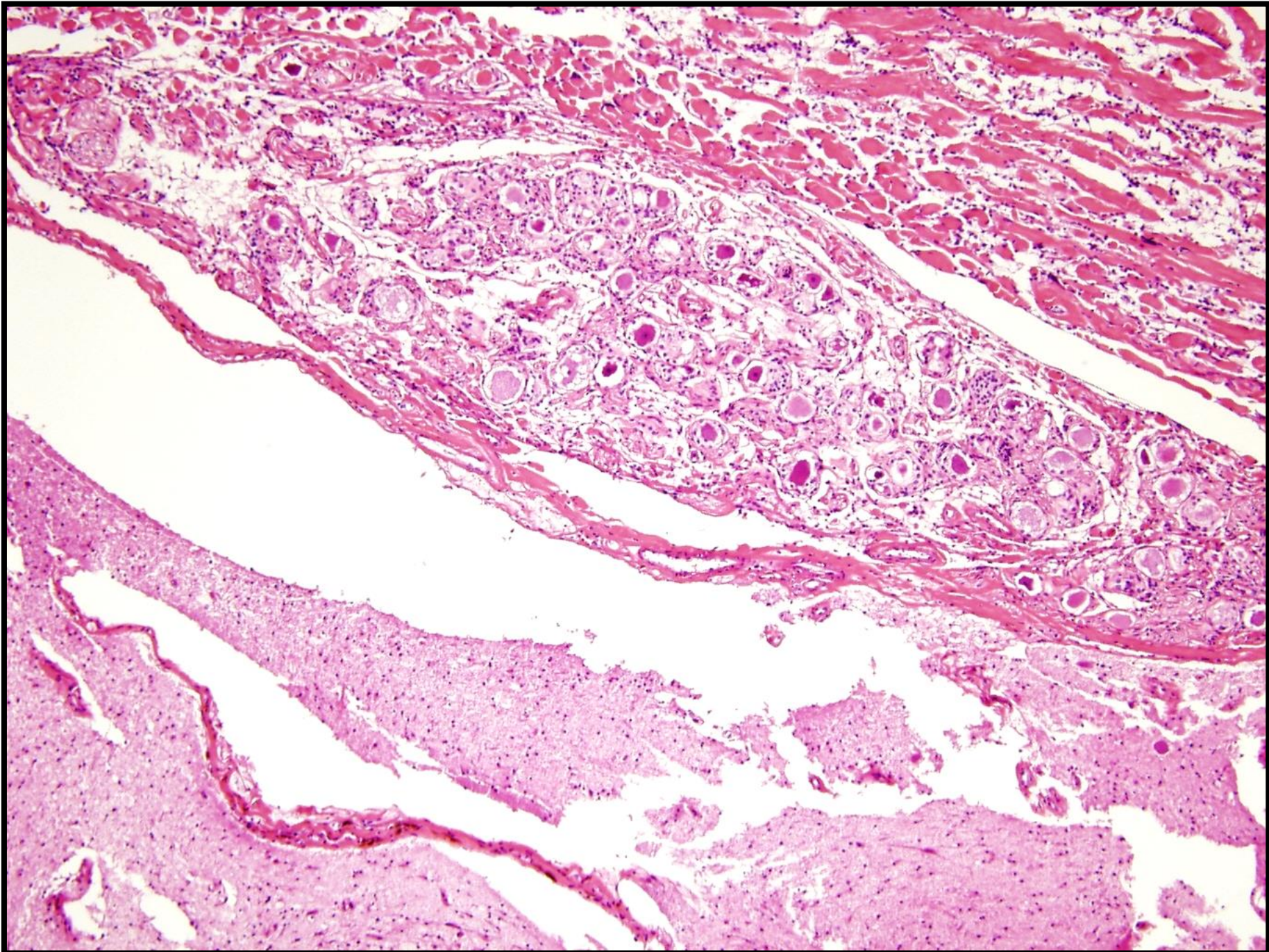


**Orsein**

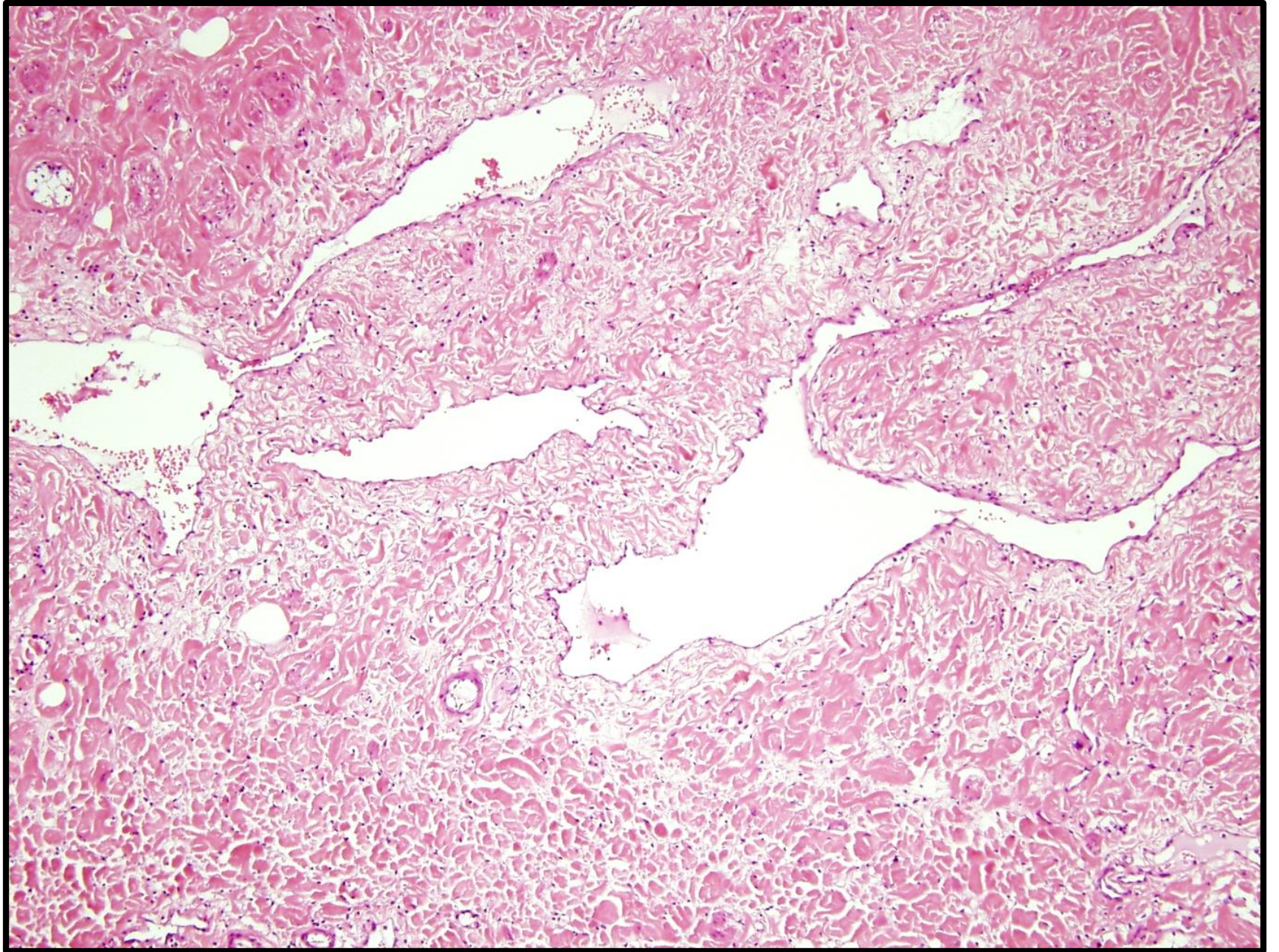


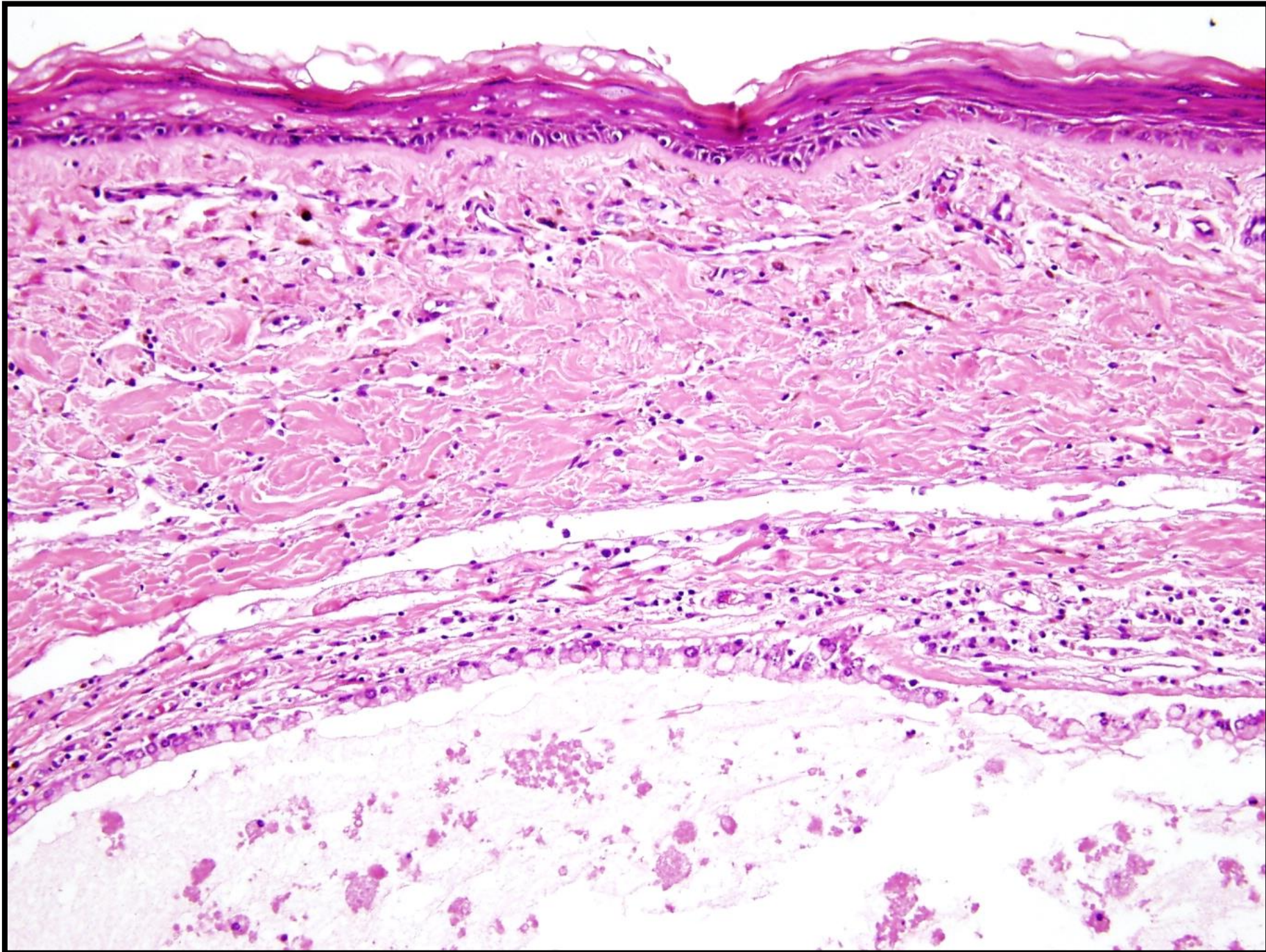
**Masson Trikrom**

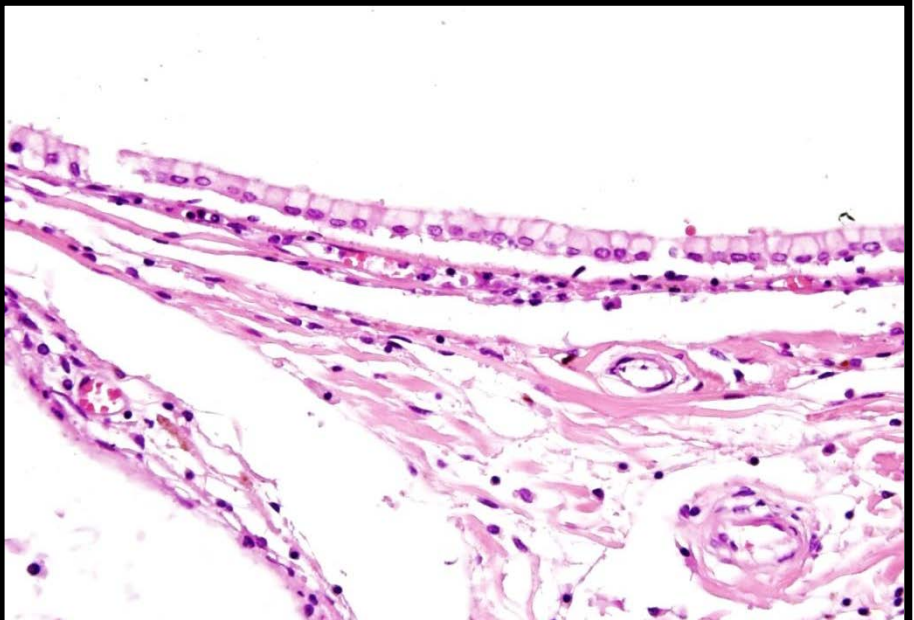
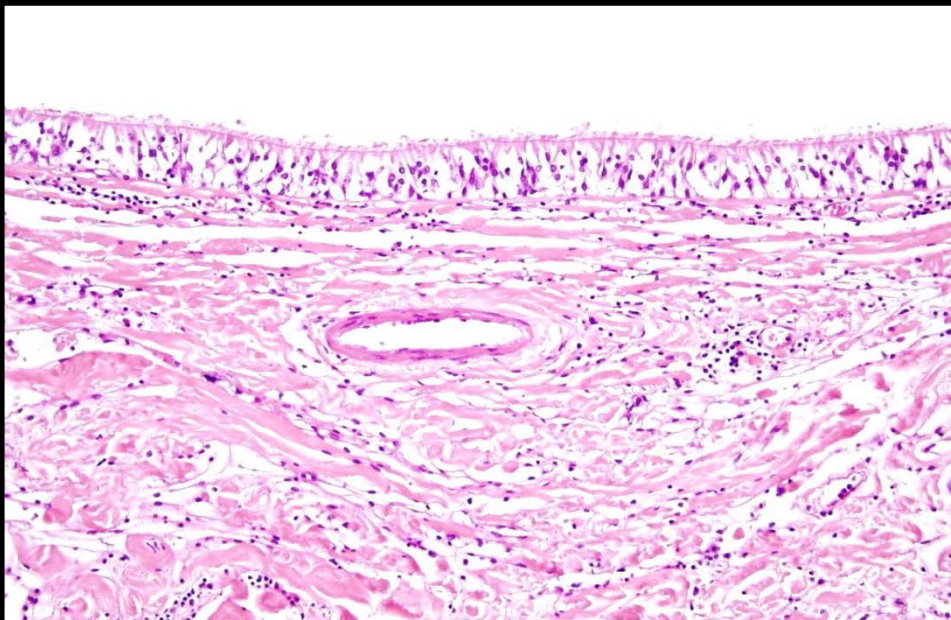
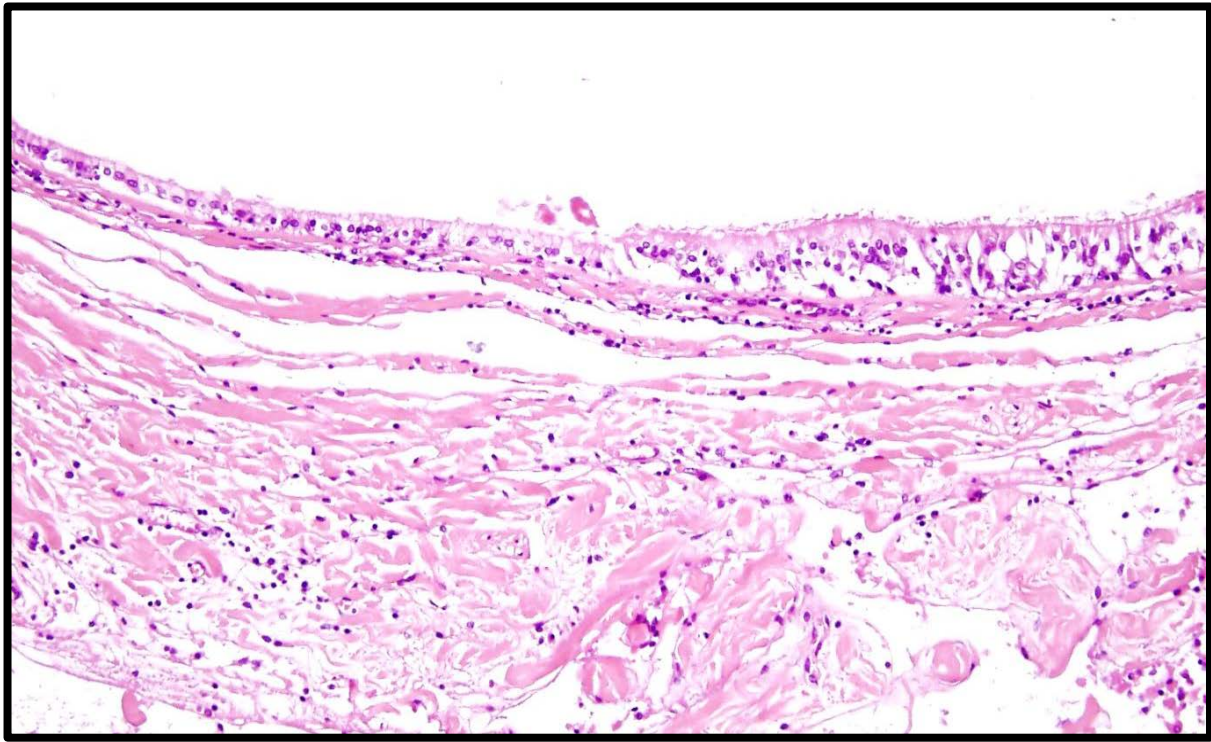


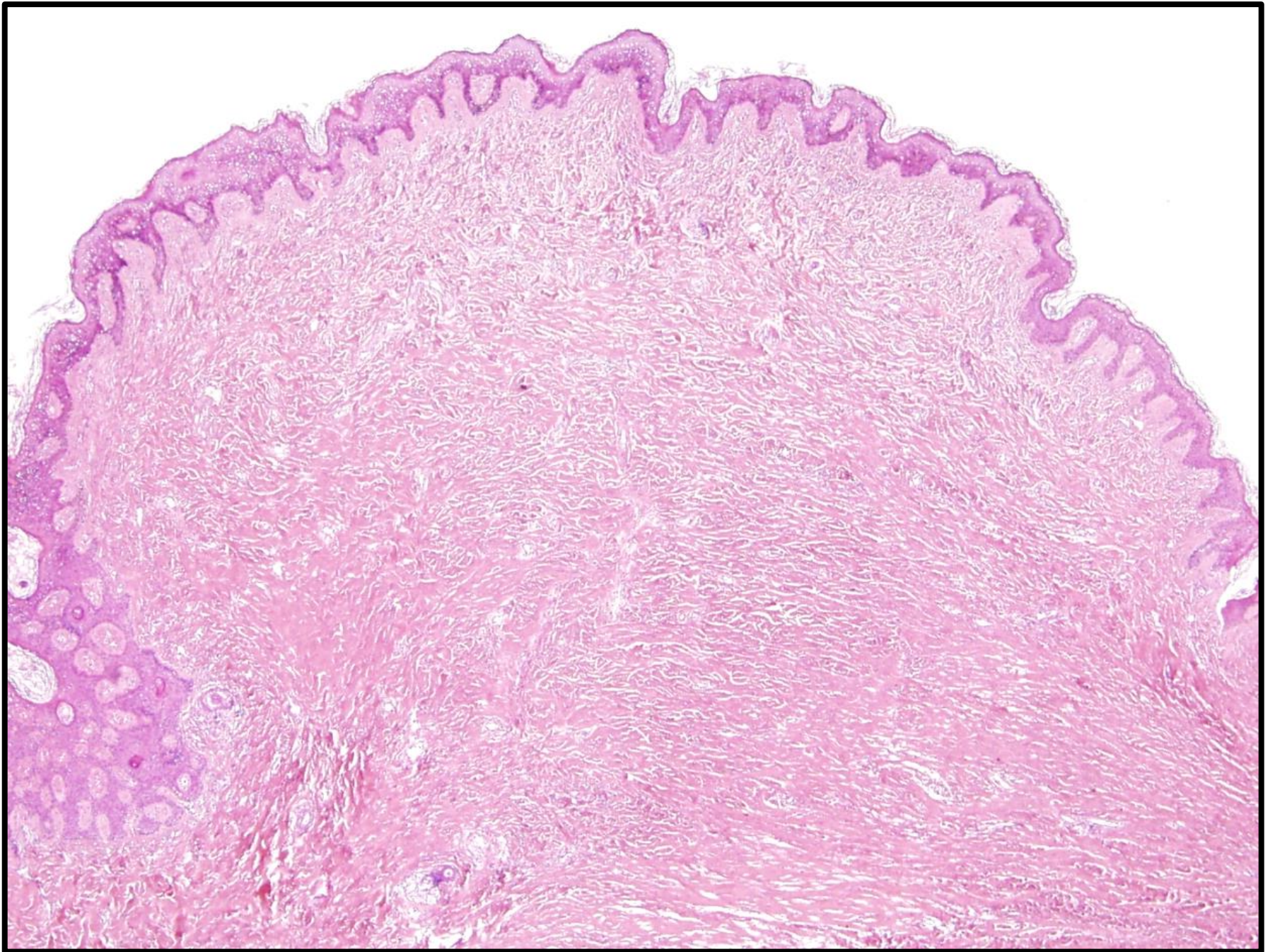


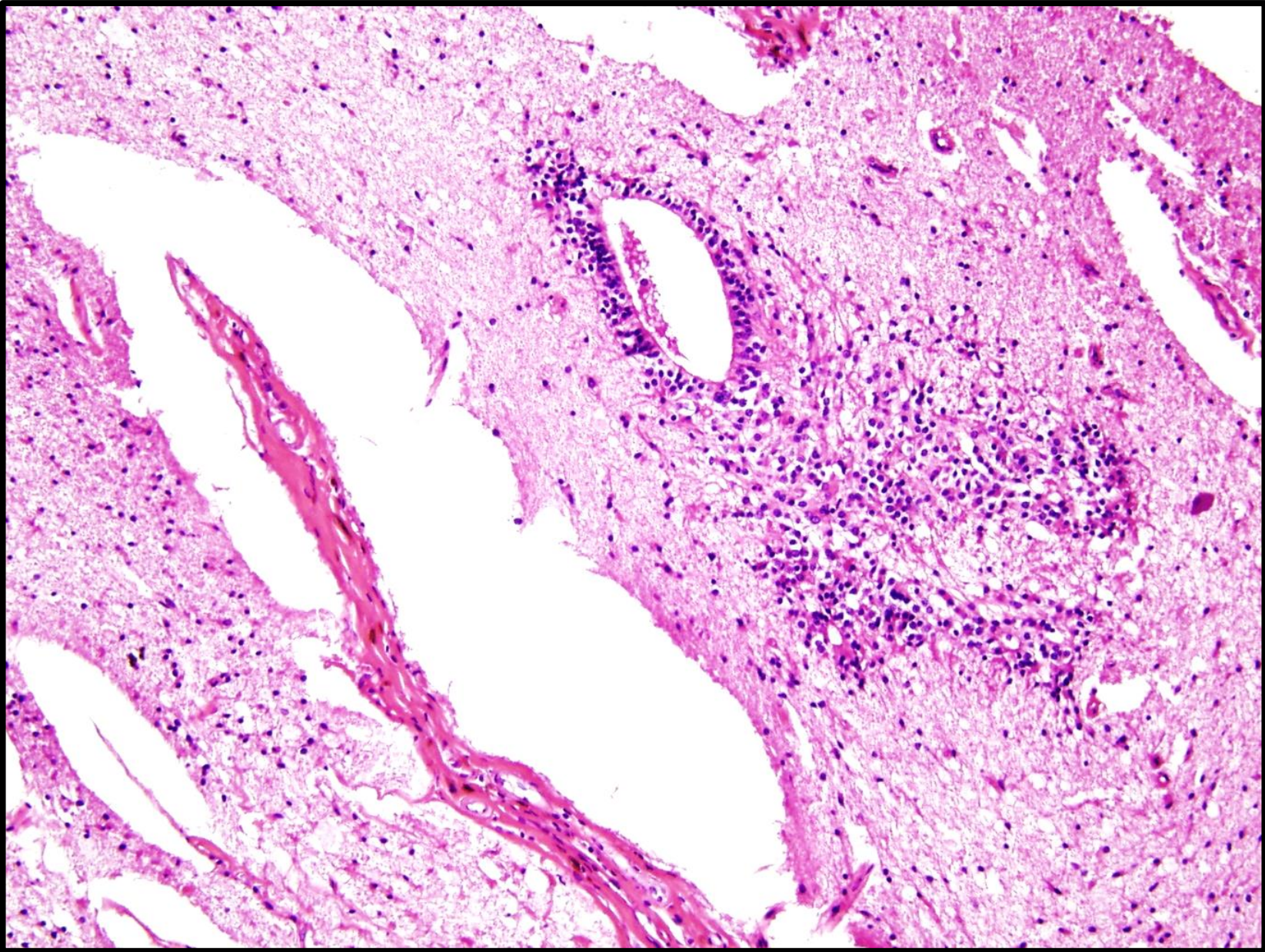












- Nadir
- 1904'te **"Kütane meningiyom"**
- 1974'te Lopez ve ark.:

Tip 1

Tip 2

Tip 3

- **Kütane heterotopik meningeal nodül**
- **Acoelic meningeal hamartom**
- **Rudimenter meningosel**

## TİP 1

- Nöral tüp kapanma defekti sonucu **dermis ve subkutiste tuzaklanan ektopik araknoidal hücreler**
- Genellikle konjenital
- Saçlı deri, alın ve paravertebral alan

## TİP 2

- Yumuşak doku menenjiyomunun komşuluk yolu ile deriye yayılması
- **Kraniyal ve spinal sinirlerin etrafındaki araknoid hücre kalıntılarının genişlemesi**
- Erişkinlerde
- Yüzde göz, ağız, burun, kulak çevresinde

## TİP 3

- **Primer intrakraniyal menenjiyomun dermis veya subkütan dokuya invazyonu**
- Kemik, travma veya cerrahi defekt yolu ile yayılım
- Yüz, şakak, saçlı deride

- Küçük, yuvarlak, eozinofilik meningotelyal hücreler
- Kalınlaşmış kollajen demetleri
- Psammom cismi
- Düzensiz, uzamış, anastomozlaşan, dilate, damar benzeri boşluklar

Tip 2 ve 3 :

- Dermisin daha yüzeyine yayılır.
- Meningotelyal gruplar daha geniş
- Kollajen daha az



## **KLİNİK**

- Subkütanöz nodül veya plak
- Soluk veya koyu renkli
- Alopesi/hipertrikozis
- Genelde ağrısız, bazen ağrılı ve hassas

## **AYIRICI TANI**

- Alopesi areata, aplasia kutis, sebace nevüs, dermoid kist, lipom, epidermal inklüzyon kisti, adneksal tümör, lenfanjiyom, meningosel, fibrom...

# TEDAVİ

- **Komplet cerrahi eksizyon**
- Tip 1: İyi prognoz, rekürrens bildirilmemiş.
- Tip 2 ve 3: Daha kötü prognoz
- VEGF ve PDGF inhibitörleri

## CUTANEOUS MENINGIOMAS— A CLINICOPATHOLOGIC STUDY

D. A. LOPEZ, CDR, MC, USN, D. N. SILVERS, MAJOR MC, USAR,  
AND E. B. HELWIG, MD

**Cancer 34:728–744, 1974.**

A meningioma of the scalp that might have developed from a rudimentary meningocele

**K. D. Brantsch, G. Metzler, S. Maennlin\* and H. Breuninger**

*Department of Dermatology, Eberhard Karls University, Tuebingen, Germany; and \*Private Radiology Practice, Rottweil, Germany*

doi:10.1111/j.1365-2230.2009.03519.x

*Histopathology* 2011, 59, 407–420. DOI: 10.1111/j.1365-2559.2011.03968.x

## The histopathological spectrum of cutaneous meningeal heterotopias: clues and pitfalls

Maxime Battistella, Nathalie Guedj,<sup>1</sup> Catherine Fallet-Bianco,<sup>2</sup> Christine Bodemer,<sup>3</sup>  
Nicole Brousse<sup>4</sup> & Sylvie Fraitag<sup>4</sup>

*Pathology Department, Hôpital Saint Louis, Paris 7 University, Assistance Publique Hôpitaux de Paris, Paris, <sup>1</sup>Pathology Department, Hôpital Beaujon, Paris 7 University, Assistance Publique Hôpitaux de Paris, Paris, <sup>2</sup>Neuropathology Department, Hôpital Sainte Anne, Paris 5 University, Assistance Publique Hôpitaux de Paris, Paris, <sup>3</sup>Dermatology Department, Hôpital Necker-Enfants Malades, Paris 5 University, Assistance Publique Hôpitaux de Paris, Paris, and <sup>4</sup>Pathology Department, Hôpital Necker Enfants Malades, Paris 5 University, Assistance Publique Hôpitaux de Paris, Paris, France*

Date of submission 15 September 2010  
Accepted for publication 17 January 2011

**Luca Di Tommaso · Carmine Fortunato ·  
Vincenzo Eusebi**

## **Meningothelial hamartoma located in the forehead**

Received: 16 December 2002 / Accepted: 7 February 2003 / Published online: 12 April 2003  
© Springer-Verlag 2003

- Psammom cismi
- Kollajenöz nodül
- Kistik kavite
- Dilate, damar benzeri boşluklar
- Gliyal doku
- Periferik sinir kesiti
- Gangliyon hücreleri
- Silindirik epitelle döşeli kist
- Fibrotik nodül
- **Nöral tüp benzeri kanal yapısı\***

## Sonuç olarak:

### Ektopik meningotelyal hamartomlar

- Spesifik klinik özelliđi olmayışı nedeniyle ayırıcı tanısı geniş.
- Özellikle çocuklarda, saçlı deri lokalizasyonunda akla gelmeli.
- Belirgin sellüler/sinsisyal paterni olan vakalarda tanı daha kolay.
- Eşlikçi ya da baskın komponent tanıda zorluk yaratabilir.  
(Vasküler lezyon, lenfanjiyom?)
- Görüntüleme yöntemleri ile intrakraniyal meningiom olasılığı dışlanmalı.

İlginiz ve sabrınız için teşekkürler...