



# GLİOBLASTOM TANILI HASTALARDA SURVİVİN EKSPRESYONU VE ANJİOGENEZİN PROGNOSTİK ÖNEMİ

**Ebru Taştekin, Vuslat Yürüt Çalođlu, Fulya Öz Puyan,  
Burcu Tokuç, Murat Çalođlu, Tülin Deniz Yalta, Nuray Can, Beril Güler**  
TRAKYA ÜNİVERSİTESİ TIP FAKÜLTESİ

# GLİOBLASTOM



En sık, en agresif  
primer beyin tümörü  
(WHO grade IV)

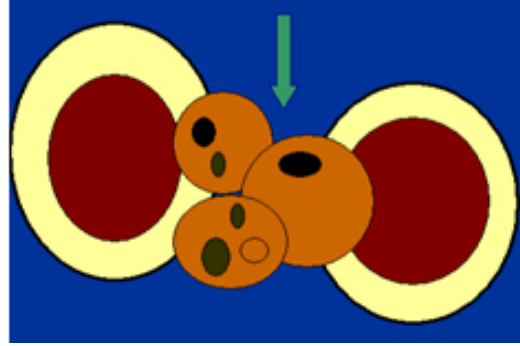
Tümör yayılımı  
çok hızlı  
CS!!!!

Apopitoz direnci  
RT ve KT direnci

**12-15 ay**

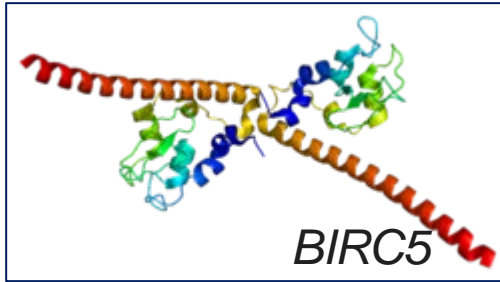


RT ve KT  
direnci!!!



MOLEKÜLER ve  
GENETİK  
MEKANİZMA!!!

# SURVİVİN



Inhibitors of  
Apoptosis Proteins  
(IAP) family

MİTOZ  
PROGRAMLANMIŞ HÜCRE ÖLÜMÜ  
APOPİTOZ

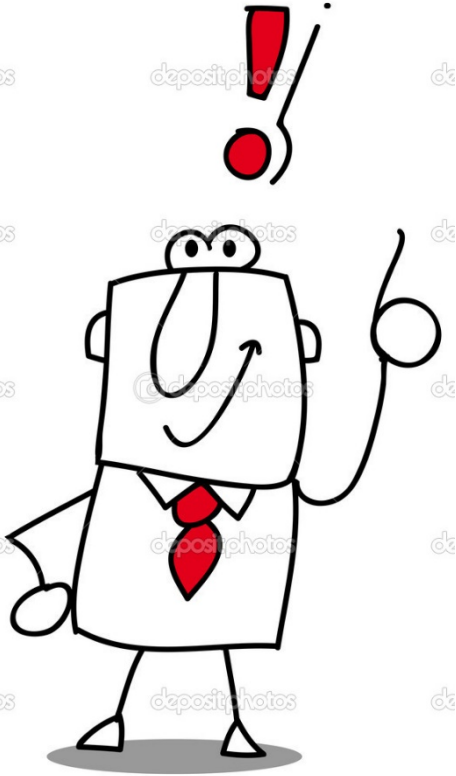
KASPAZ  
İNİBİSYONU

# SURVİVİN

Sağlıklı hücre ile malign hücreyi ayırmak!!!

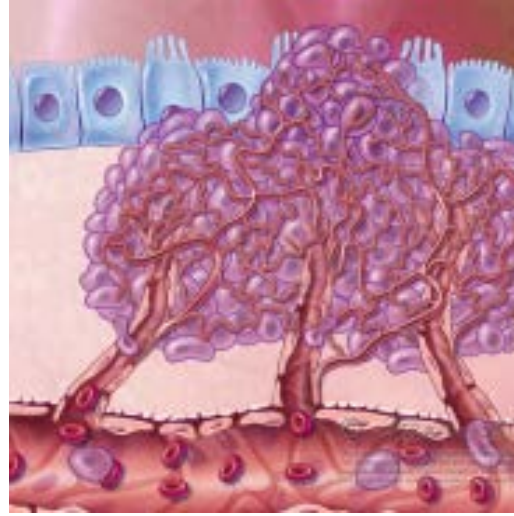


PROGNOZ ÖNGÖRÜSÜ



# ANJİYOGENEZ

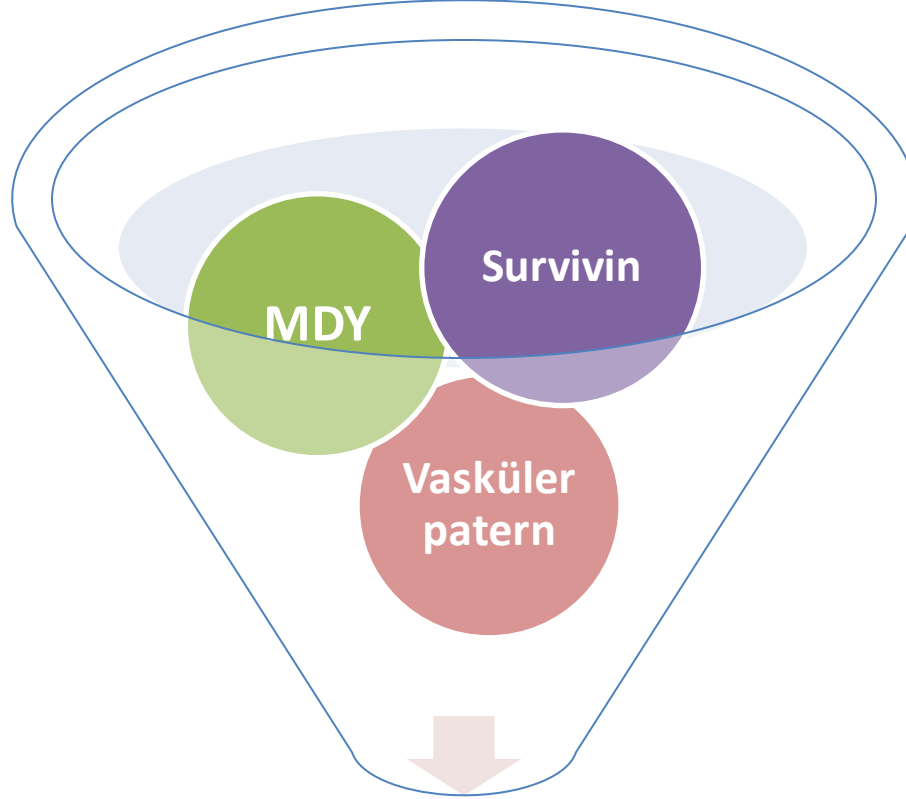
Mikro Damar  
Yoğunluğu



Vasküler  
Patern

Tümör büyümesi  
Metastaz  
Kötü prognoz

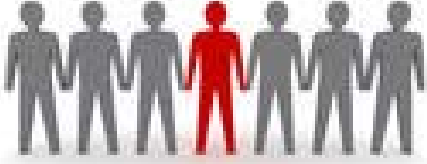
# AMAÇ



## PROGNOZ

TEDAVİ  
HEDEFİ

# ÇALIŞMA PLANI



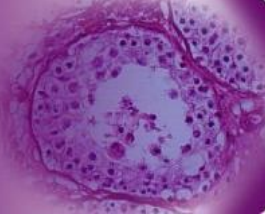
2000-2012  
GBM

82



Klinik bilgiler  
Onkoloji

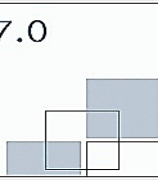
PATOLOJİ



Histopatolojik bulgular  
İmmünohistokimyasal çalışma  
Değerlendirme

SPSS Statistics 17.0

www.spss.com



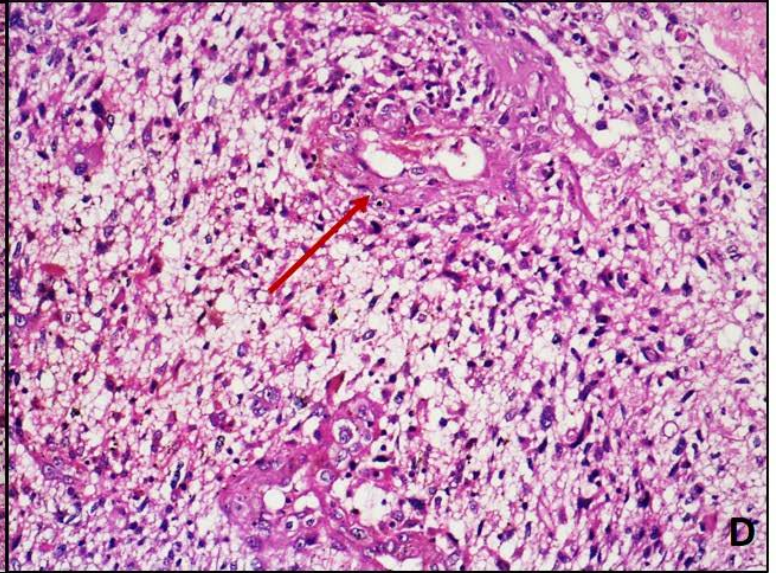
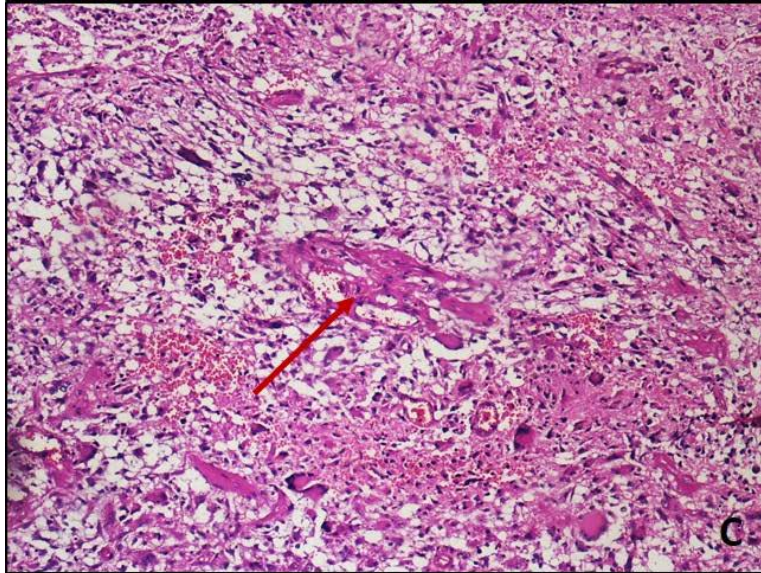
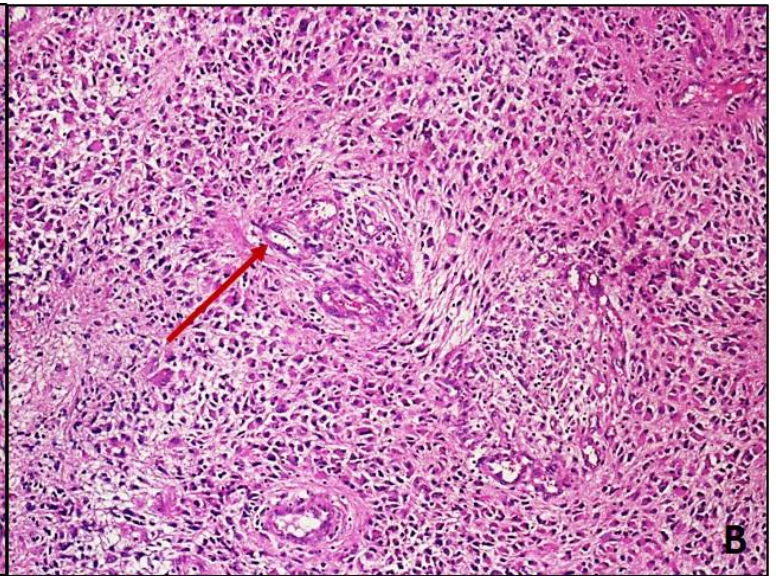
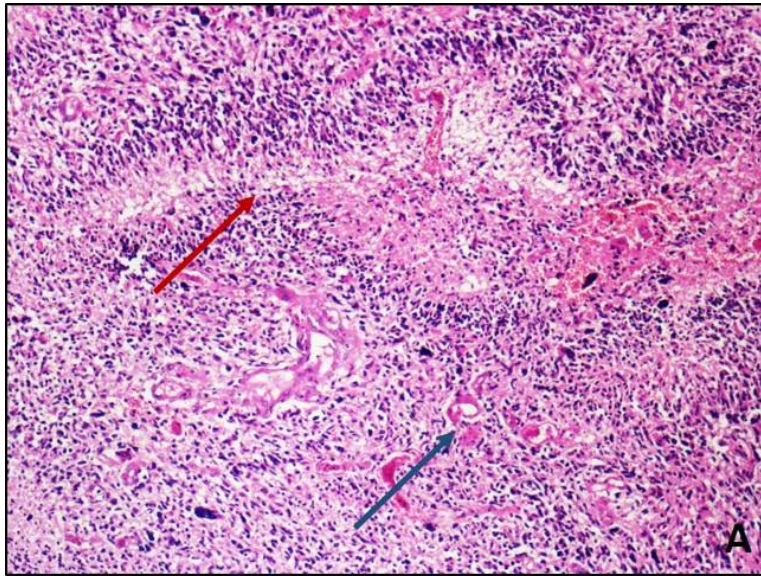
Verilerin toplanması



# VASKÜLER PATERN SKORLAMA

**A=1 ve B=2 → Klasik Vasküler Patern**

**A=0 veya B>2 → Bizar Vasküler Patern**



# SURVİVİN DEĞERLENDİRME

0

<%25

1

%26-50

2

%51-75

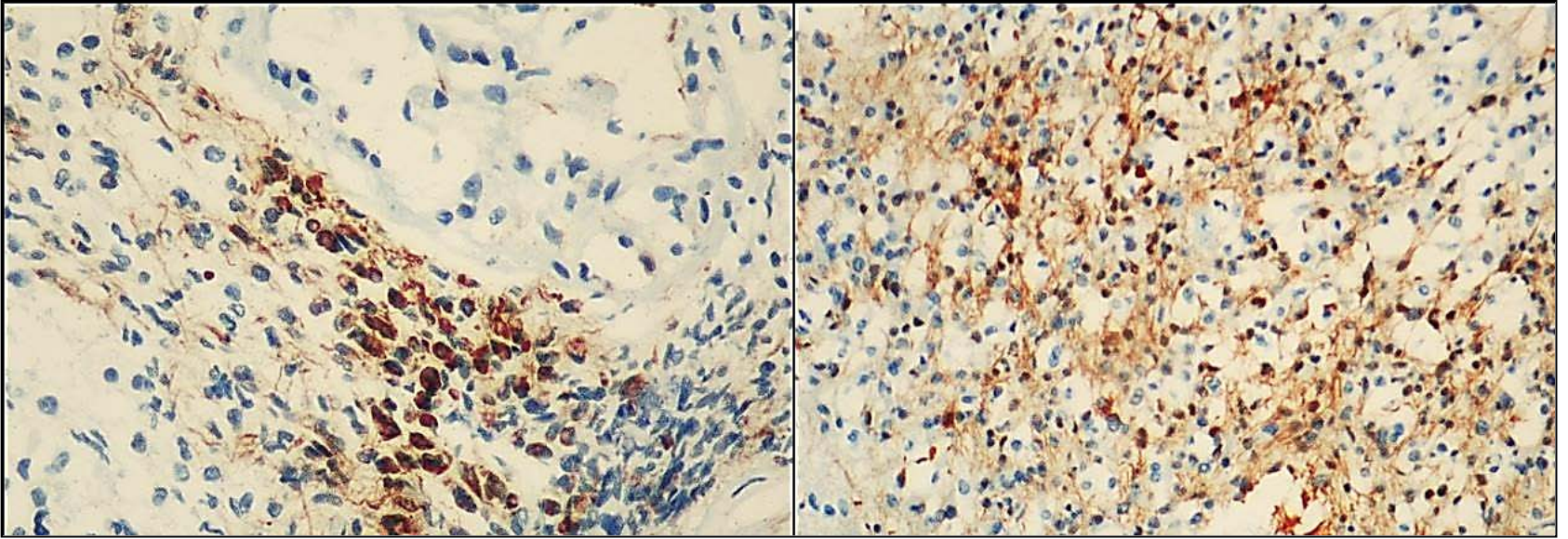
3

>%76-100

4

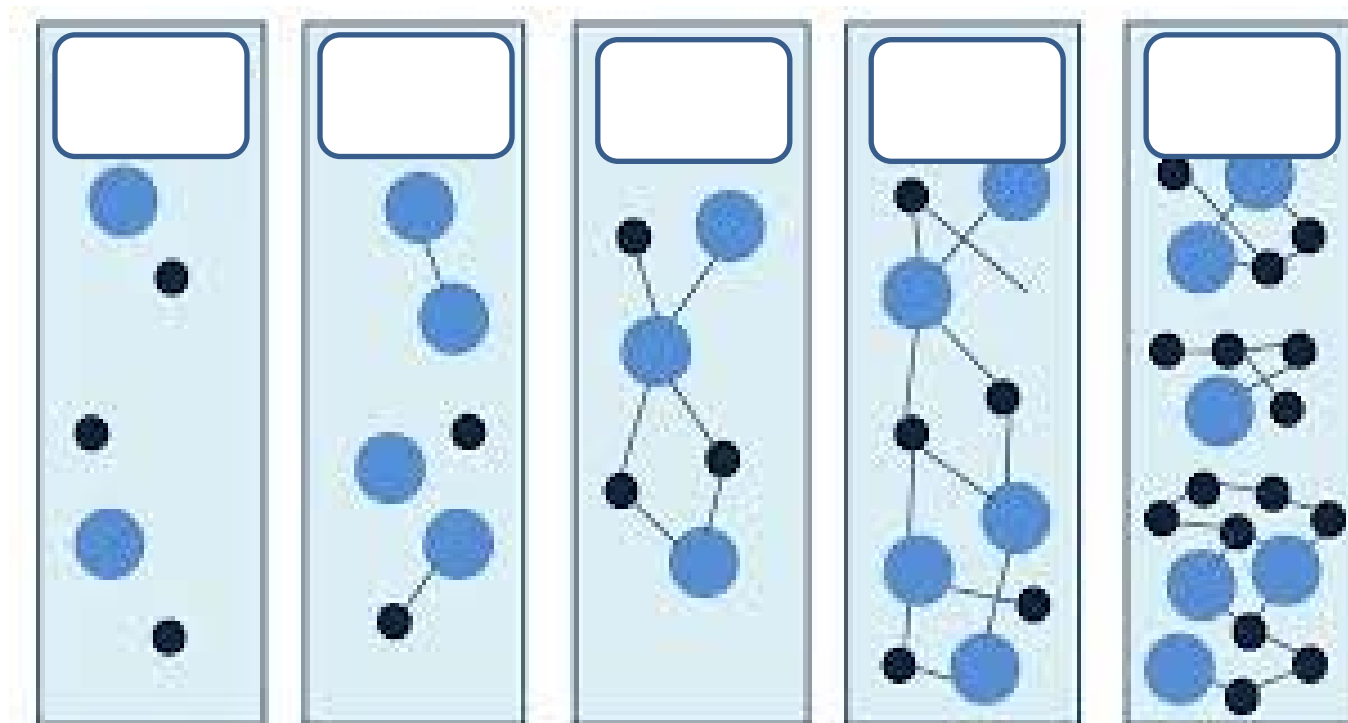
YAYGINLIK

# SURVIVİN DEĞERLENDİRME

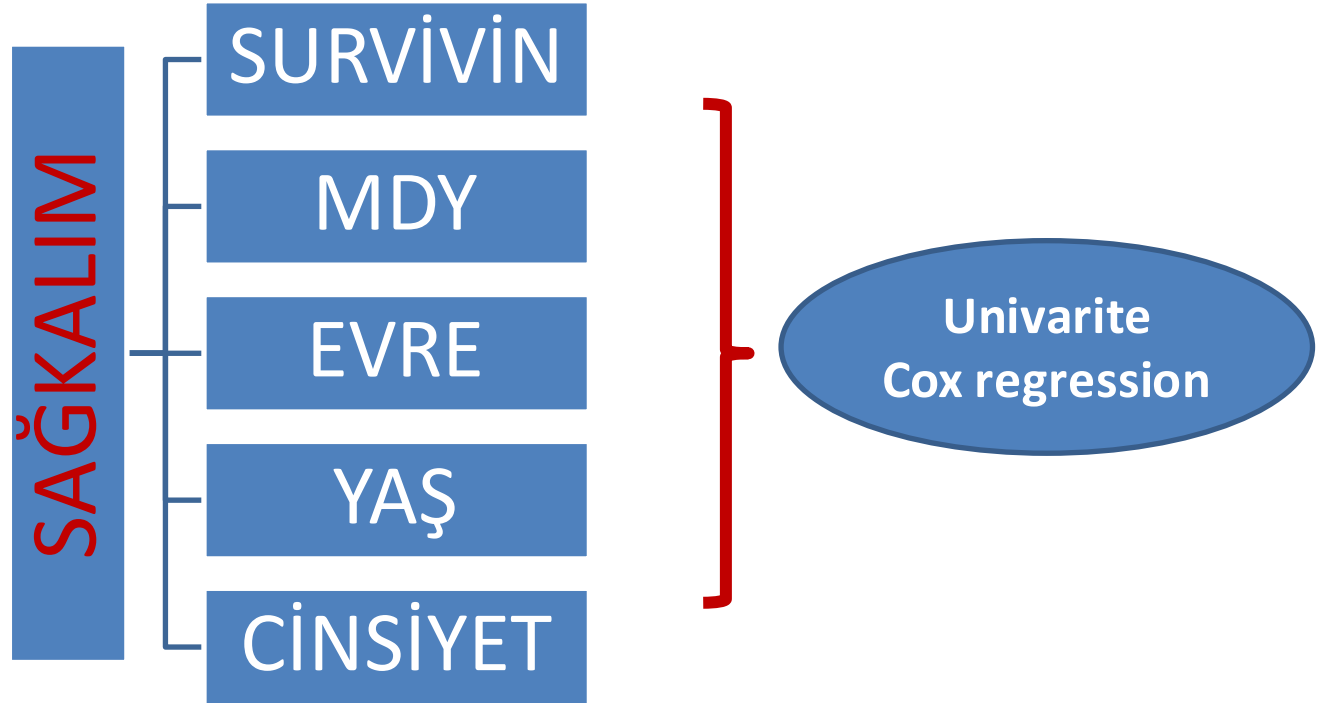


# MİKRO DAMAR YOĞUNLUĞU

CD 34



# İSTATİSTİKSEL YÖNTEM



Sağkalım analizleri

Kaplan Meier  
ve Log-Rank

# OLGULARIMIZIN DAĞILIMI

CİNSİYET	Female	35 (43.8%)
	Male	45 (56.2 %)
LOKALİZASYON	Temporal	30 (37.5%)
	Frontal	28 (35.0 %)
	Parietal	19 (23.8 %)
	Occipital	3 (3.8 %)
PRİMER/ SEKONDER	Primer	75 (93.8%)
	Seconder	5 (6.2 %)
VASKÜLER PATERN	1	40 (50 %)
	2	40 (50 %)
SURVİVİN	1	15 (18.8%)
	2	21 (26.3%)
	3	20 (25.0%)
	4	24 (30.0 %)
MVD	1	30 (37.5 %)
	2	50 (62.5 %)

# SONUÇLAR

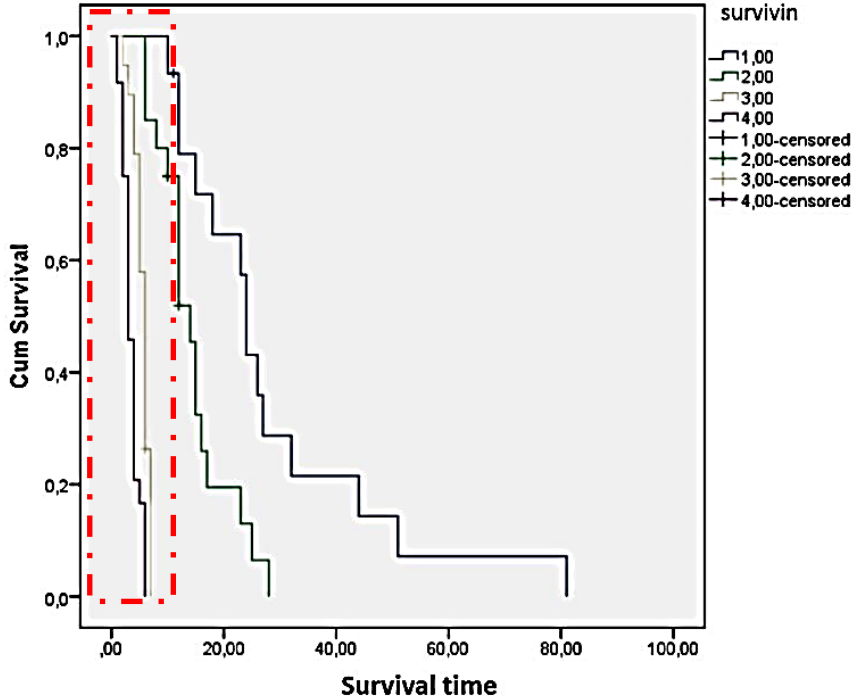
	Cox regression-Univariate			
		OR	95% CI for OR	p
Vascular pattern	1	reference		
	2	2.122	1.080 – 4.171	<b>0.029*</b>
Survivin	1	reference		
	2	2.176	1.179 – 6.256	<b>0.019*</b>
	3	30.341	7.078 – 130.068	<b>0.000*</b>
	4	80.371	18.074 – 357.381	<b>0.000*</b>
MVD	< 70	reference		
	≥ 70	0.824	0.483 – 1.407	0.479



# SONUÇLAR

SKOR  
3-4

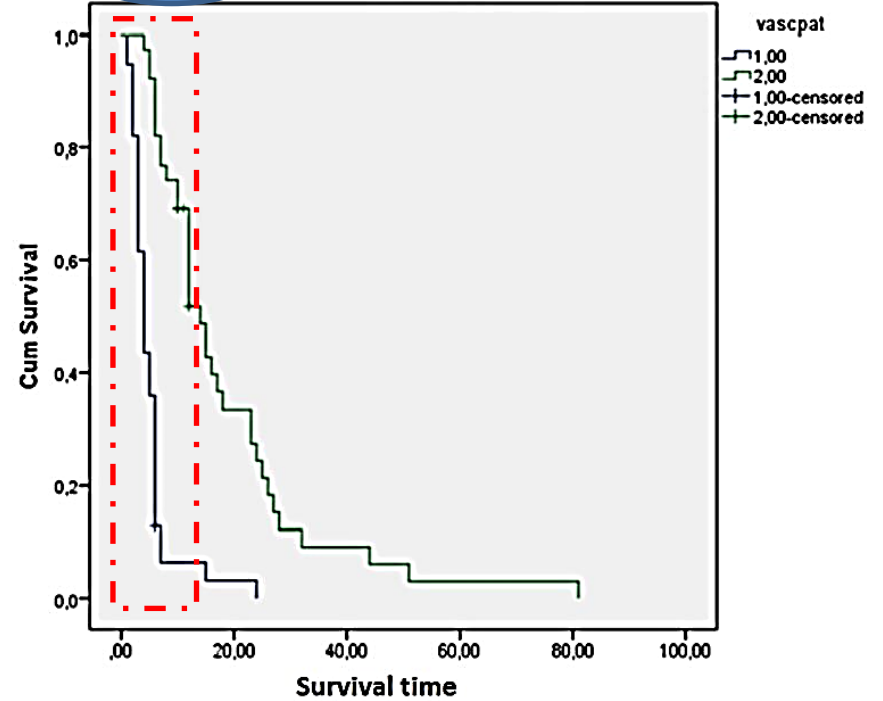
Survival Functions



SURVIVİN

Bizar  
patern

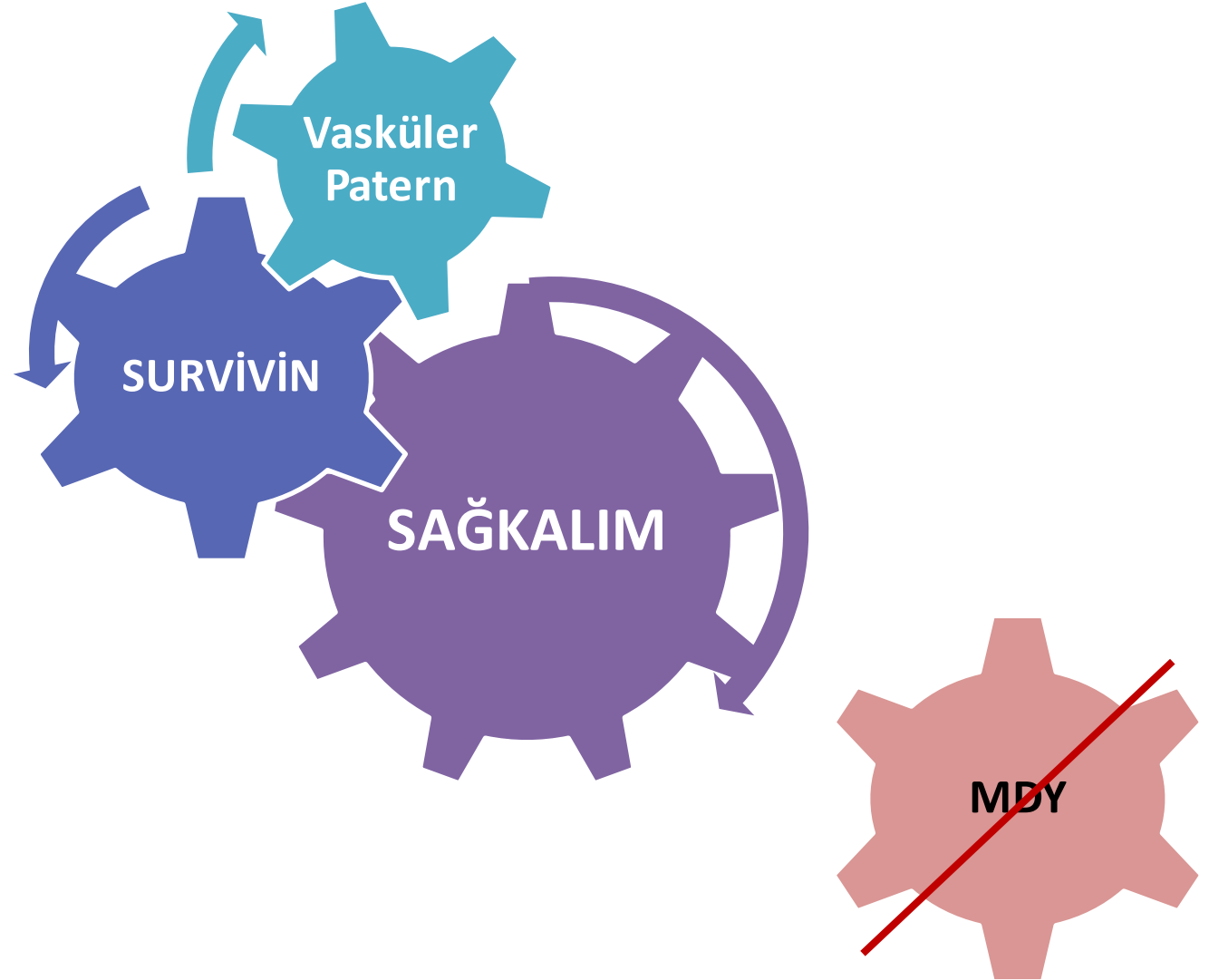
Survival Functions



VASCULAR PATTERN



# SONUÇLAR



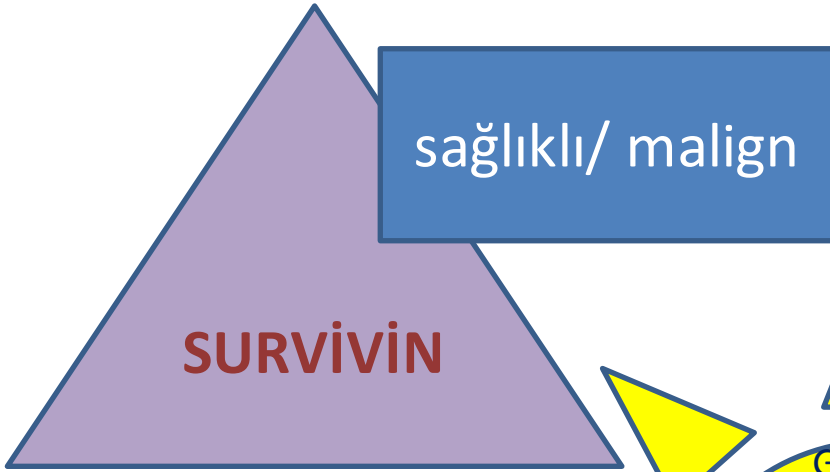
# SONUÇLAR

PROGNOZ  
ÖNGÖRÜSÜ

VASKÜLER PATERN  
SKORU  
SURVİVİN EKSPRESYON  
DERECESİ

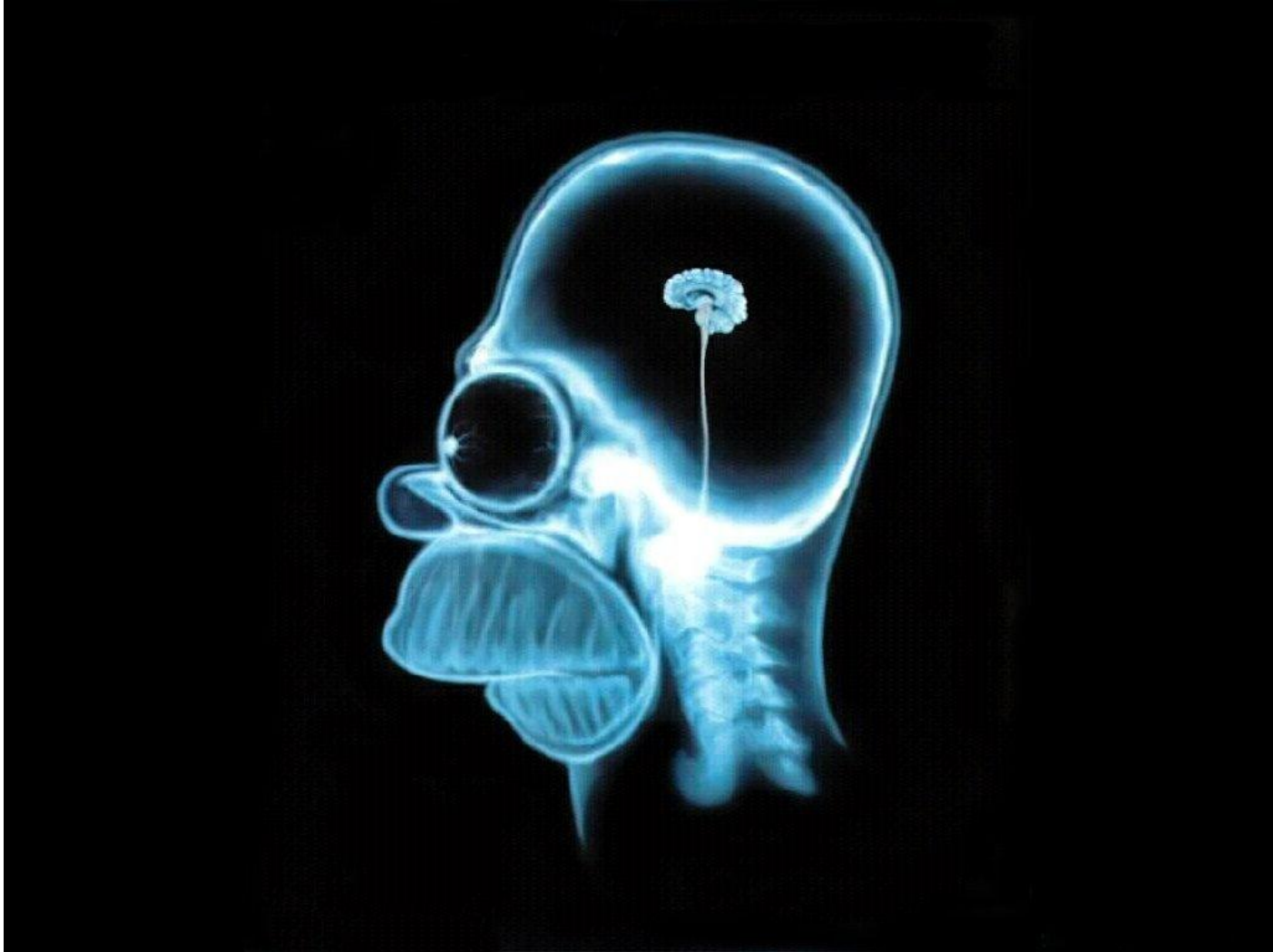


# SONUÇLAR



**SUCCESS**





*Tesekkür ederim*