

# 25. ULUSAL SİTOPATOLOJİ KONGRESİ

## 6. SİTOPATOLOJİ KONGRESİ

### OLGU SUNUMU

Hazırlayan: Uzm. Bio. AYDAN MUTLU

Kurum: Özel Pato.net Patoloji ve Sitopatoloji  
Laboratuvarı



**25.** Ulusal Patoloji Kongresi  
**6.** Sitopatoloji Kongresi

14 - 17 Ekim 2015 / Merinos AKKM - BURSA

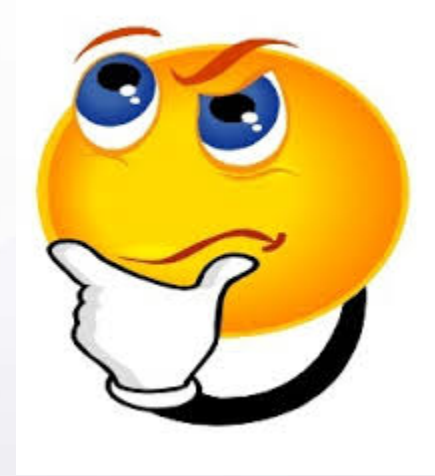


Materyal: Periton sıvısı

Hasta: 1937 d, K

Şikayet: Bildirilmemiş.

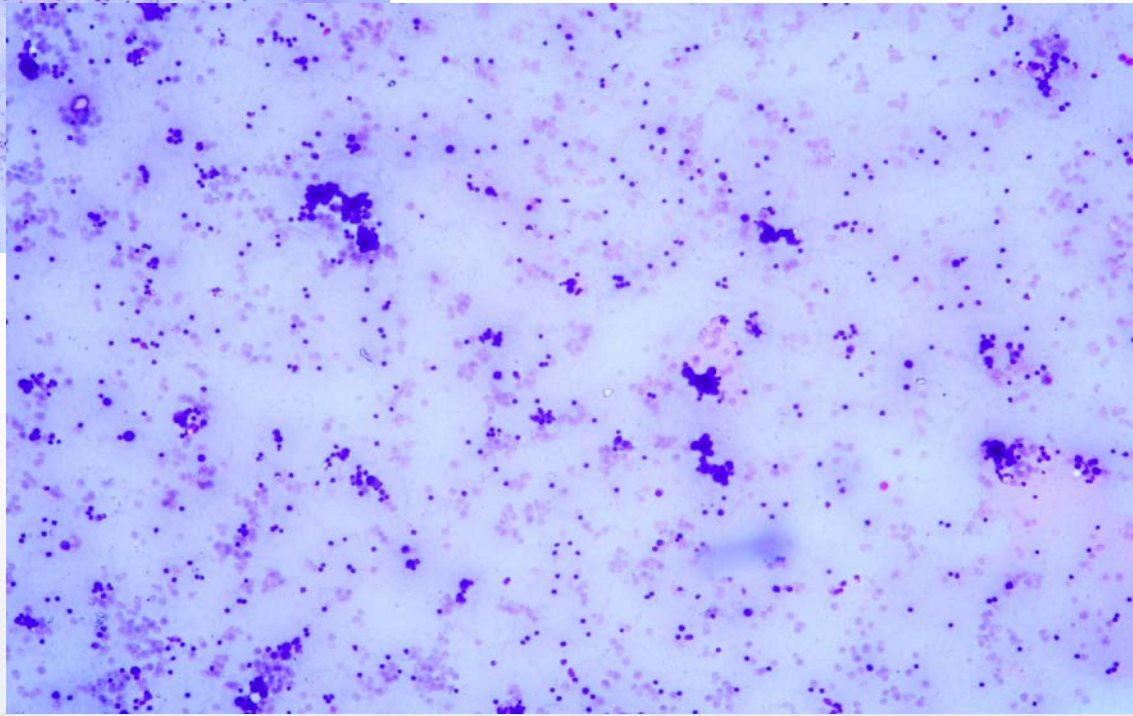
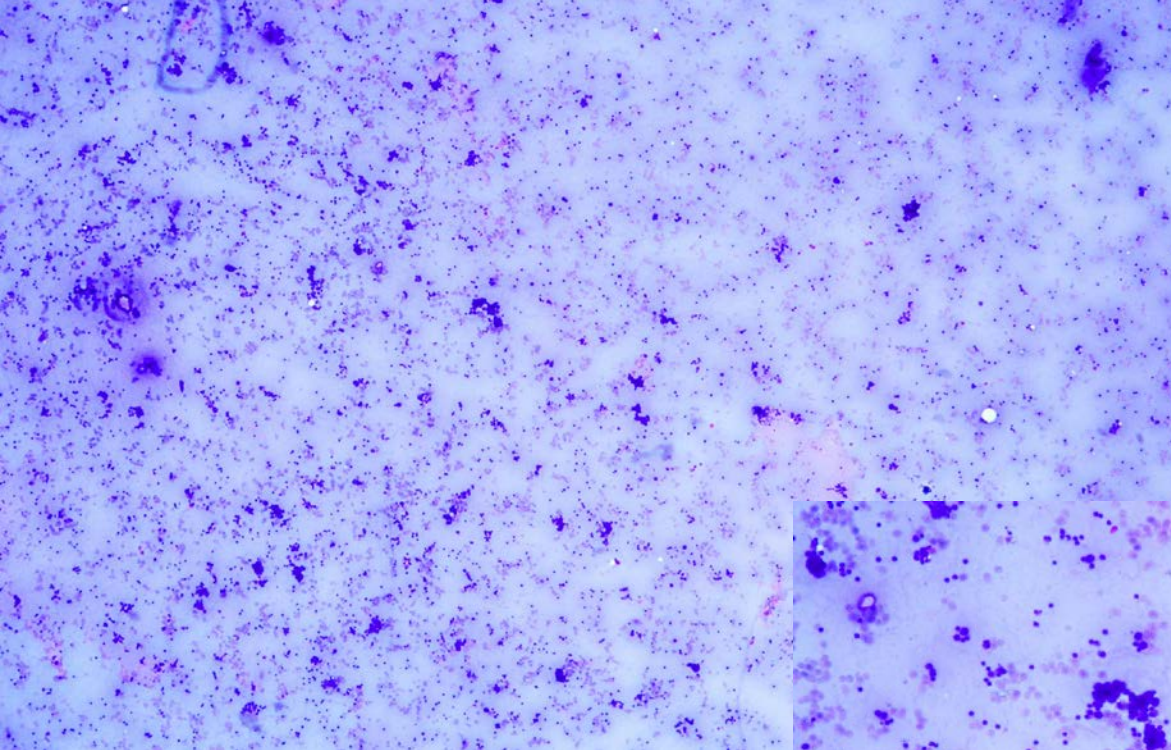
Klinik Bulgular: Malign asit sıvısı.



**25.** Ulusal Patoloji Kongresi  
**6.** Sitopatoloji Kongresi

14 - 17 Ekim 2015 / Merinos AKKM - BURSA





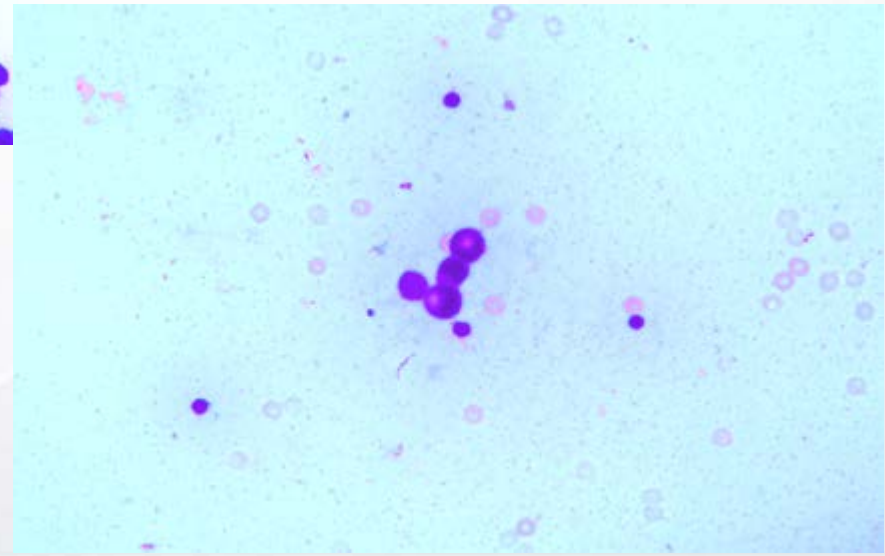
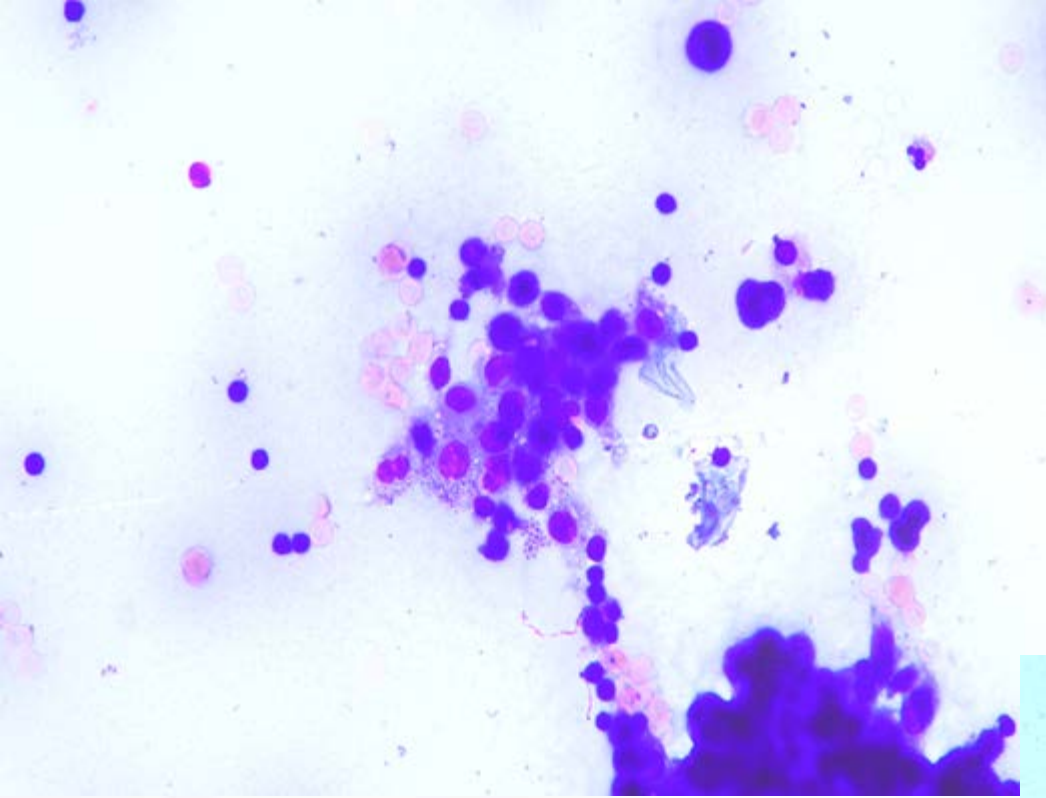
# 25. Ulusal Patoloji Kongresi

## 6. Sitopatoloji Kongresi

14 - 17 Ekim 2015 / Merinos AKKM - BURSA





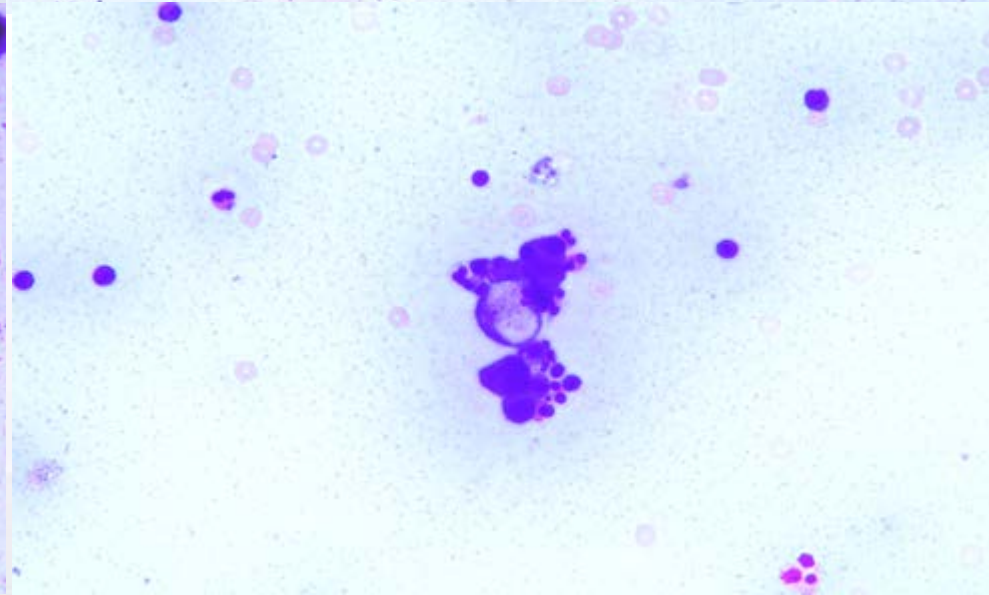
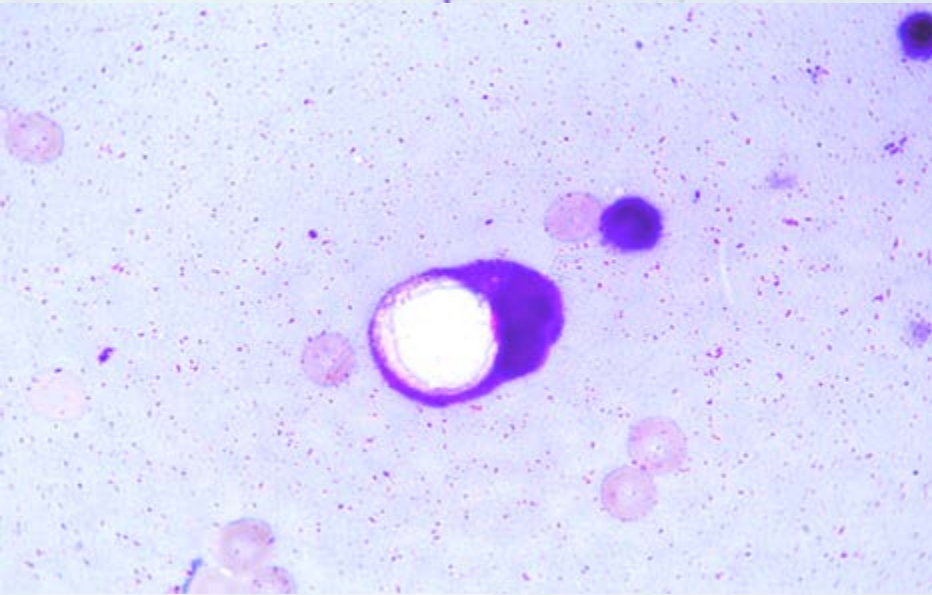
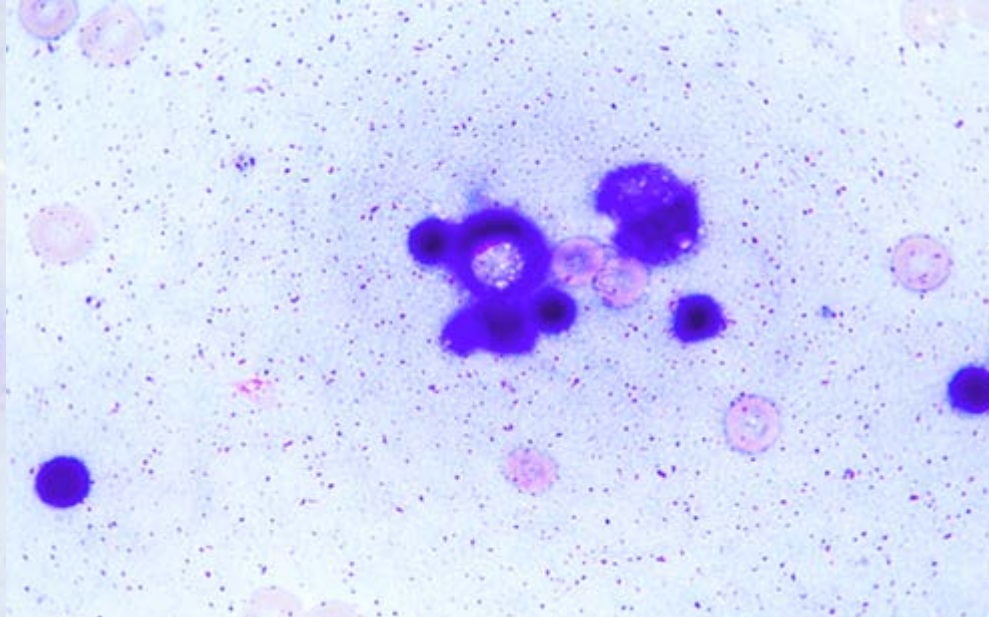
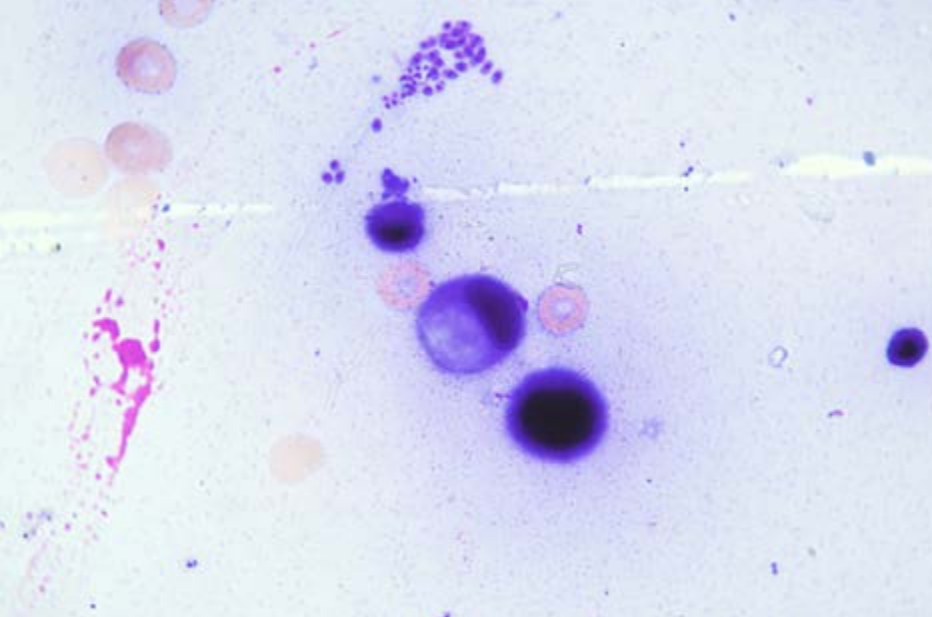


# 25. Ulusal Patoloji Kongresi

## 6. Sitopatoloji Kongresi

14 - 17 Ekim 2015 / Merinos AKKM - BURSA





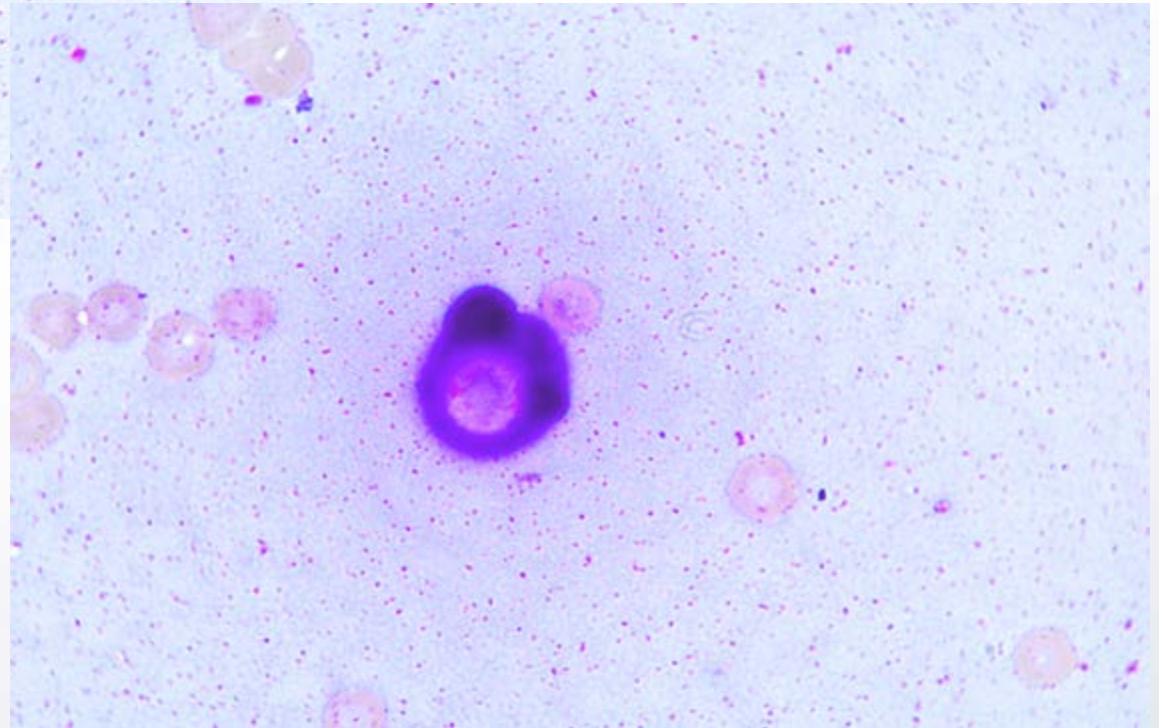
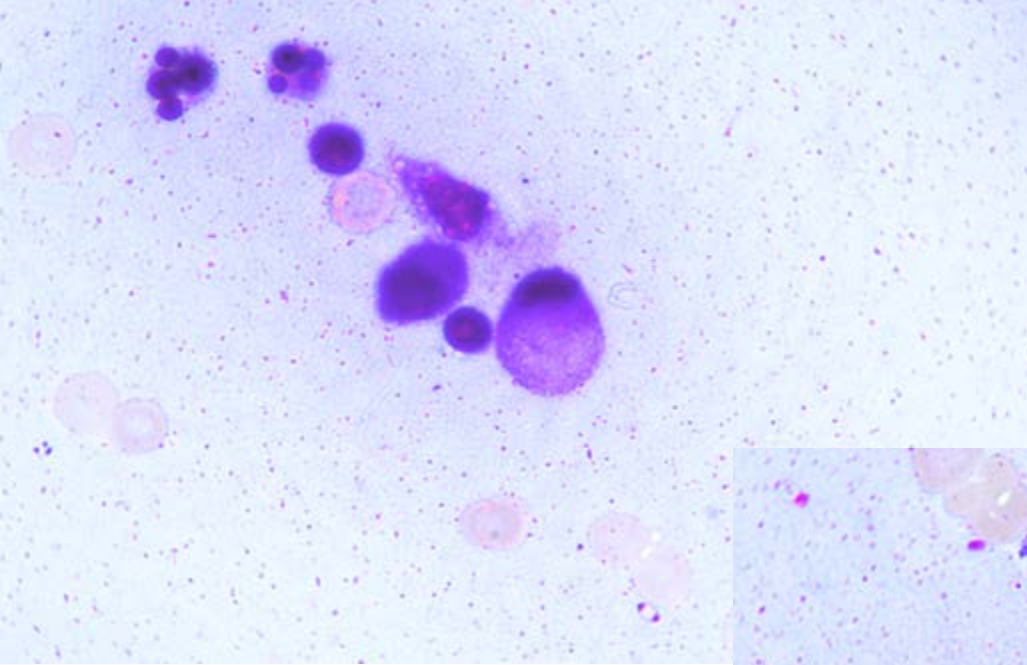
# 25. Ulusal Patoloji Kongresi

## 6. Sitopatoloji Kongresi

14 - 17 Ekim 2015 / Merinos AKKM - BURSA







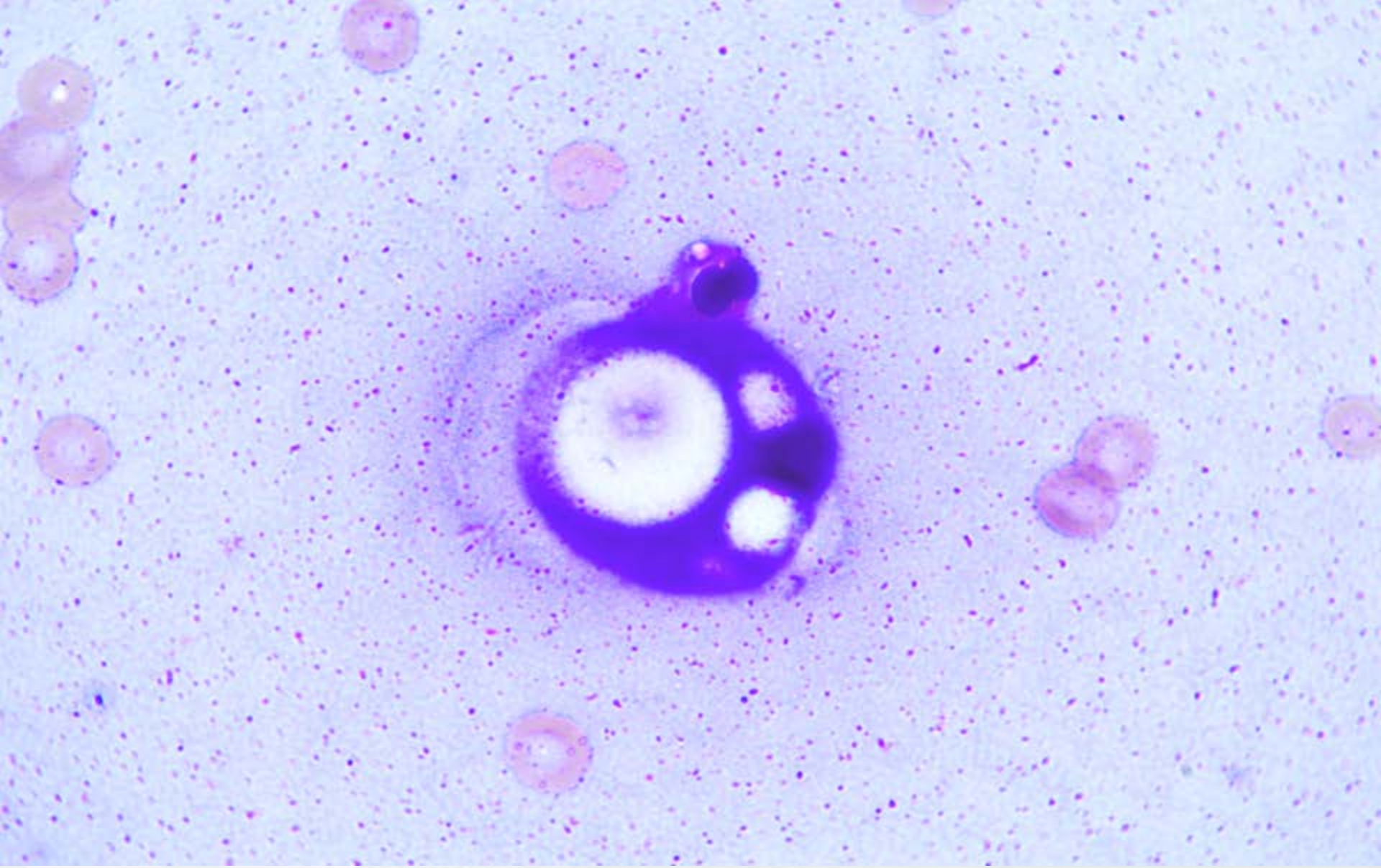
# 25. Ulusal Patoloji Kongresi

## 6. Sitopatoloji Kongresi

14 - 17 Ekim 2015 / Merinos AKKM - BURSA







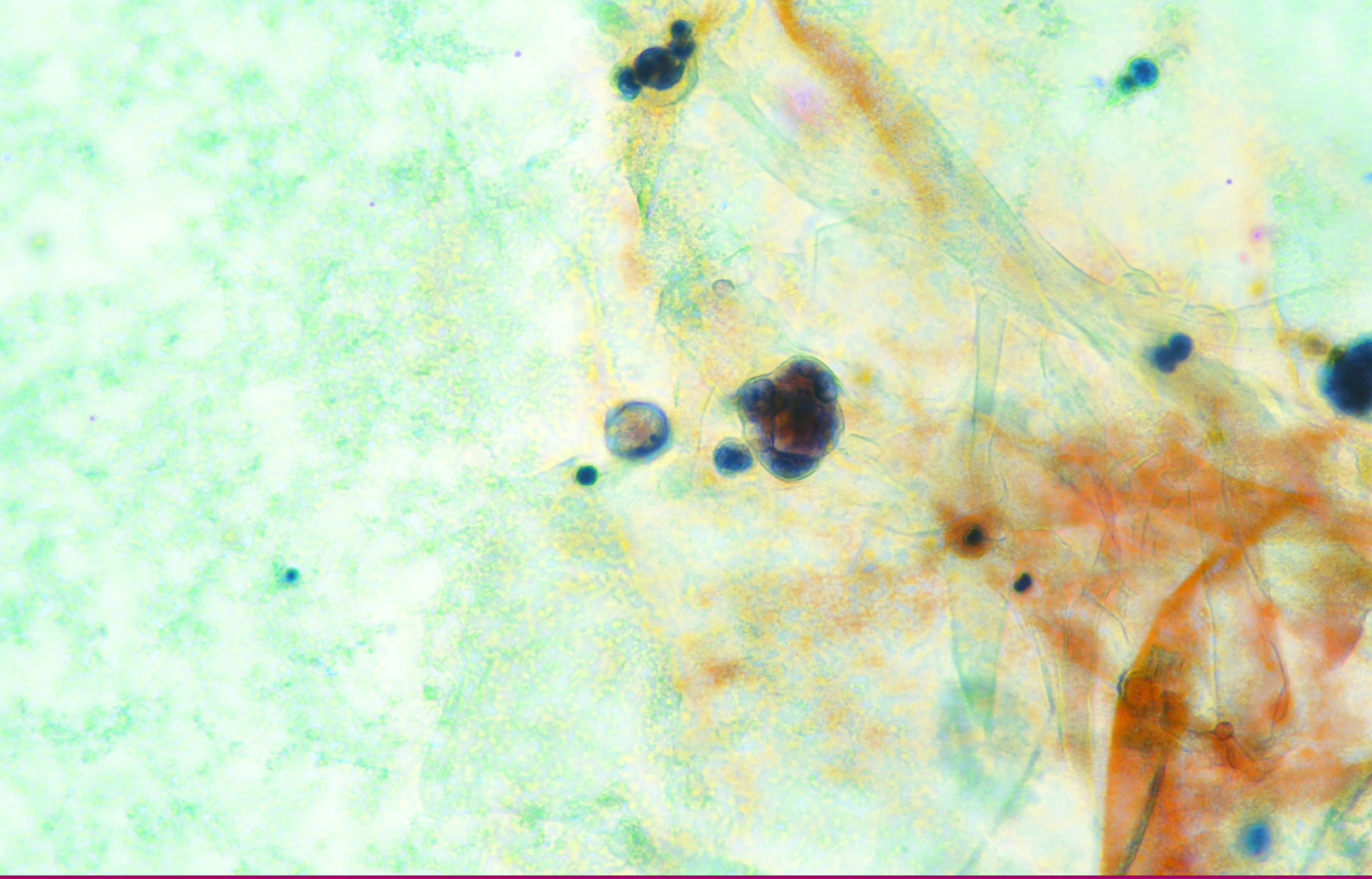
# 25. Ulusal Patoloji Kongresi

## 6. Sitopatoloji Kongresi

14 - 17 Ekim 2015 / Merinos AKKM - BURSA







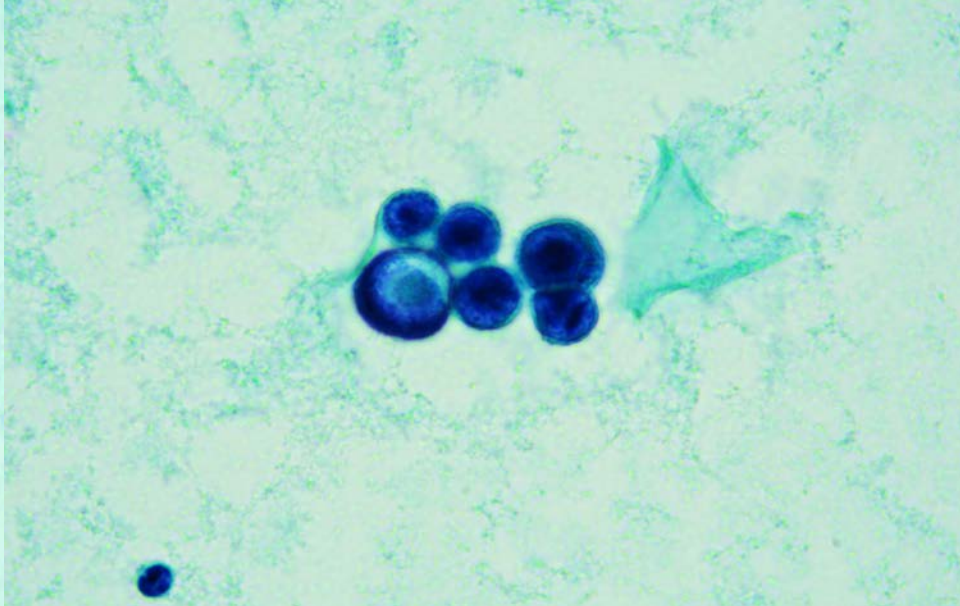
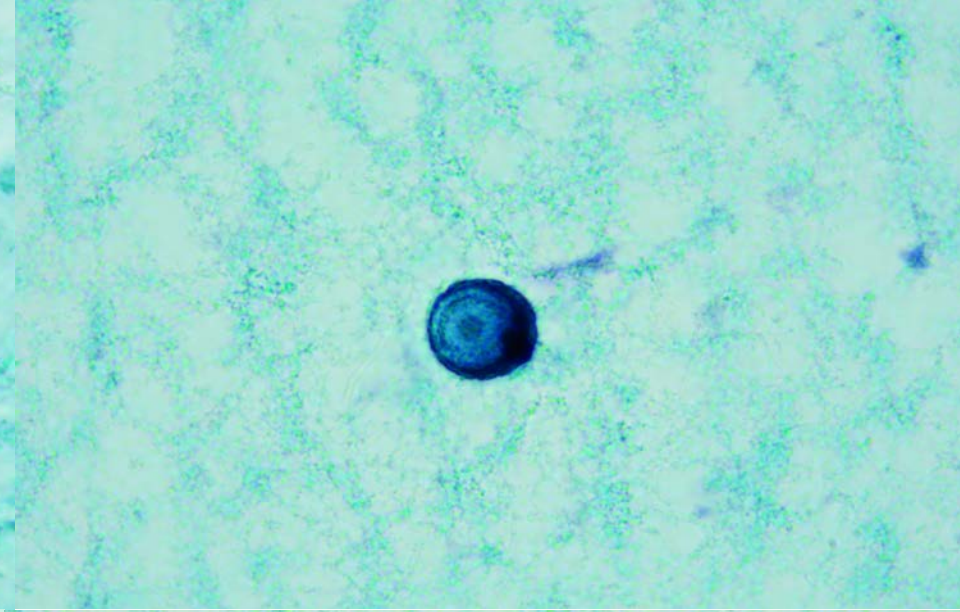
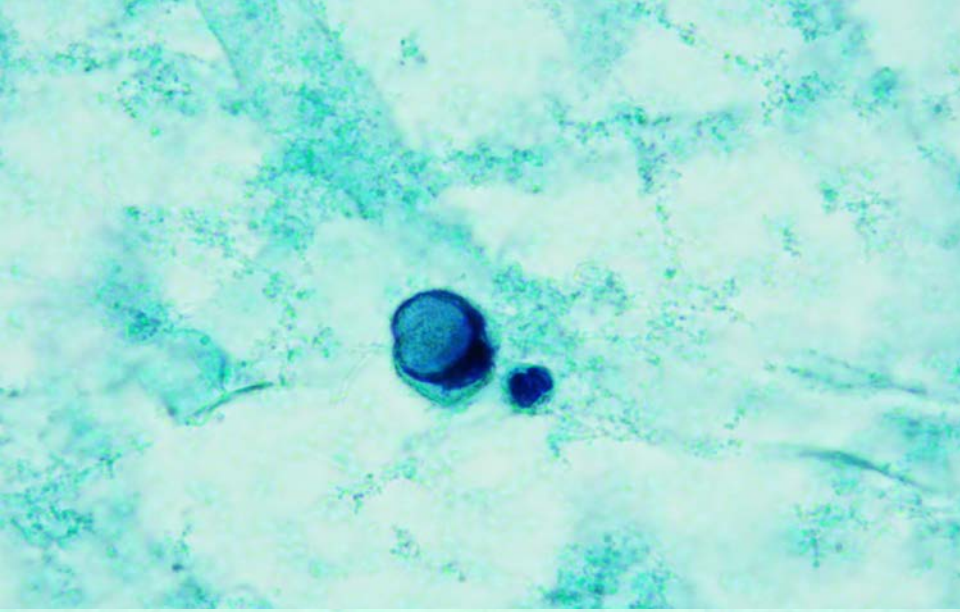
# 25. Ulusal Patoloji Kongresi

## 6. Sitopatoloji Kongresi

14 - 17 Ekim 2015 / Merinos AKKM - BURSA







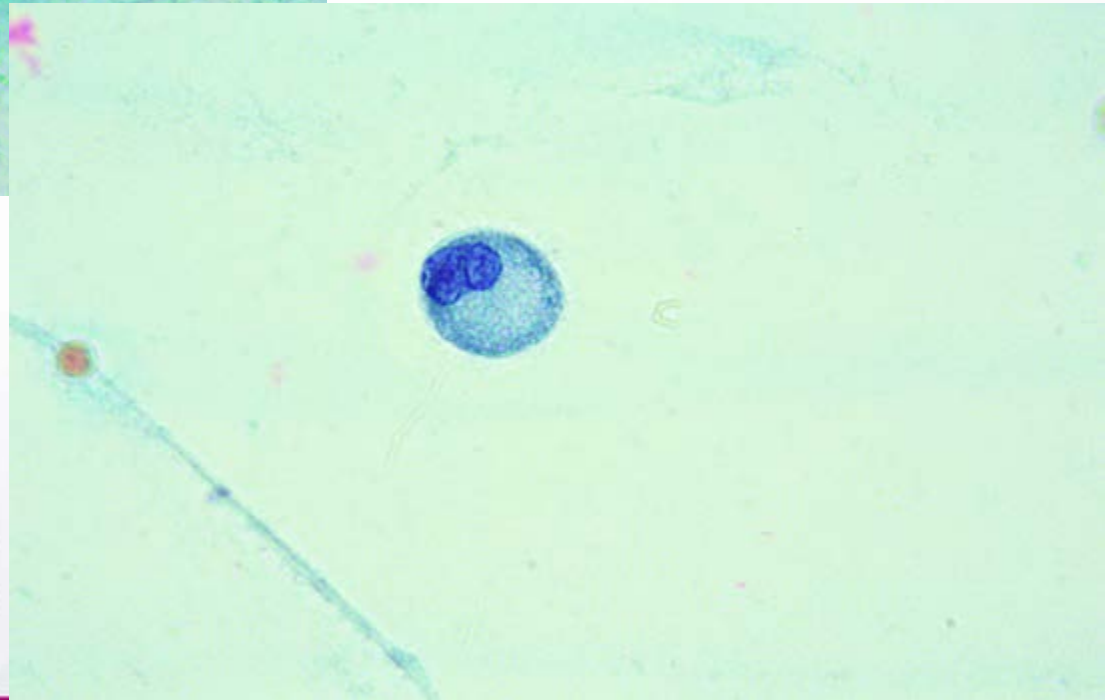
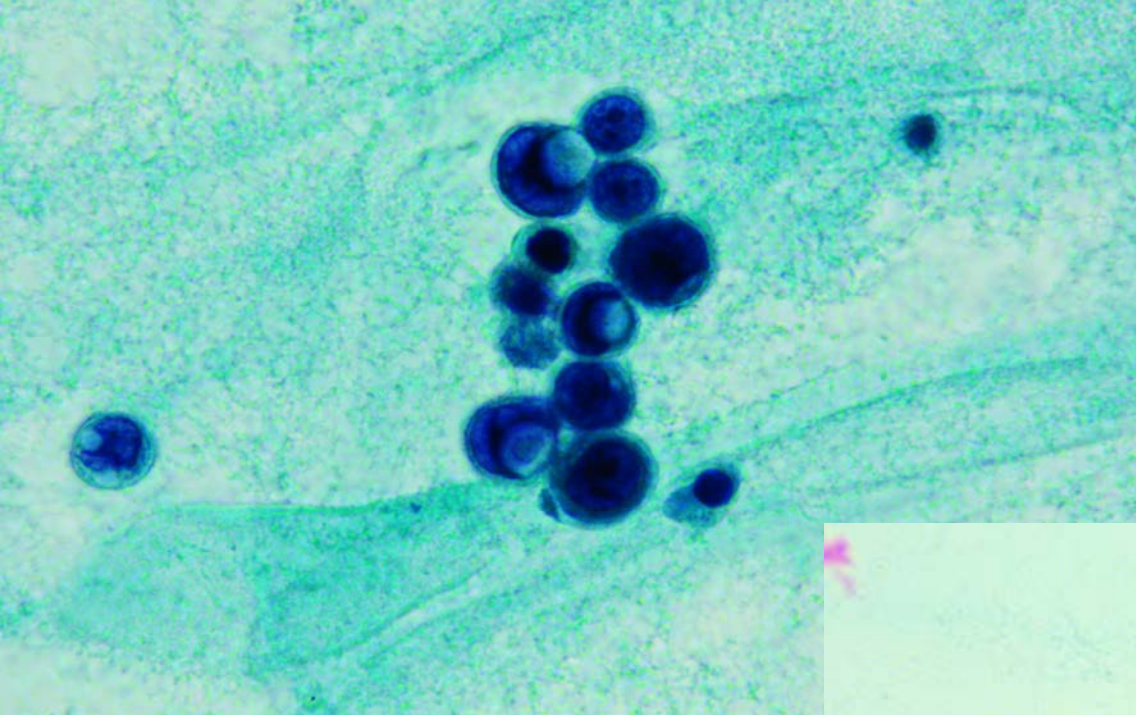
# 25. Ulusal Patoloji Kongresi

## 6. Sitopatoloji Kongresi

14 - 17 Ekim 2015 / Merinos AKKM - BURSA







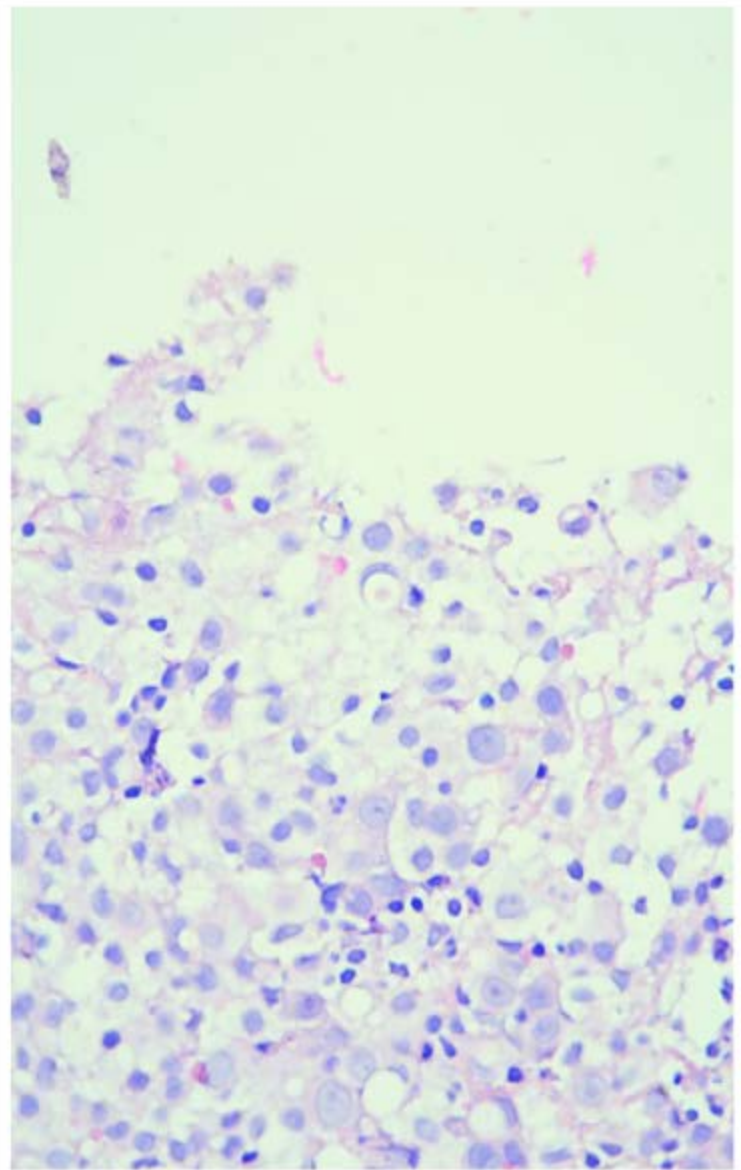
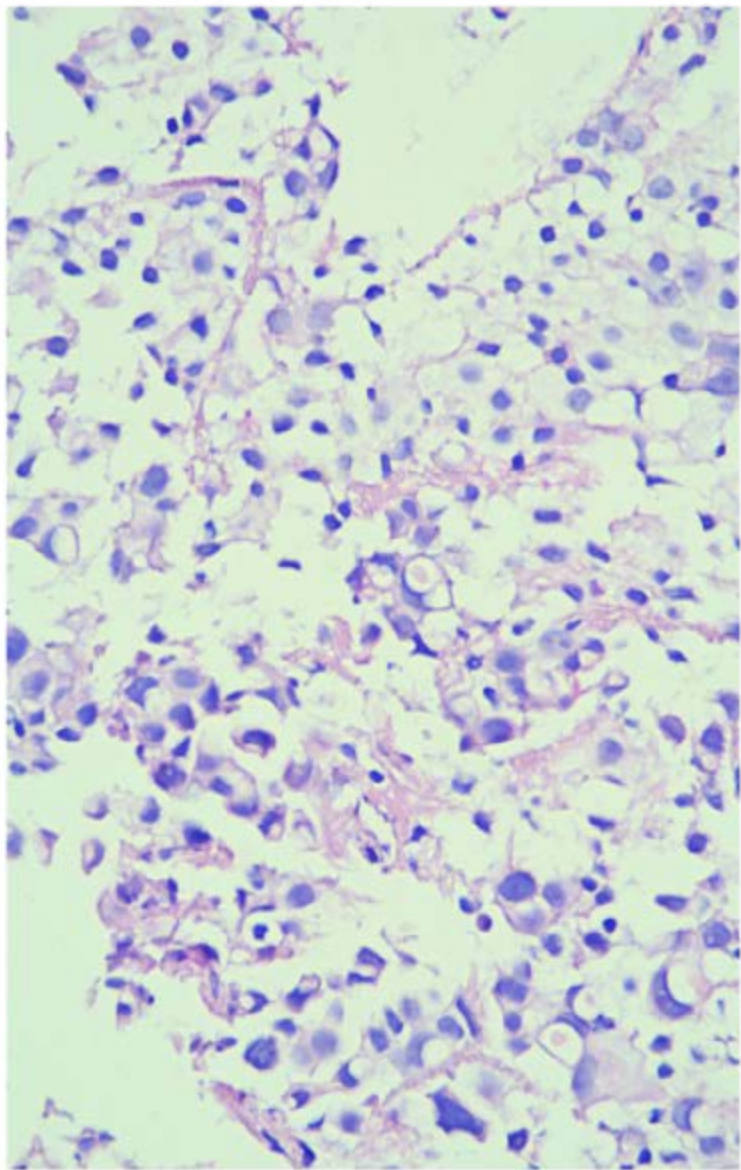
# 25. Ulusal Patoloji Kongresi

## 6. Sitopatoloji Kongresi

14 - 17 Ekim 2015 / Merinos AKKM - BURSA







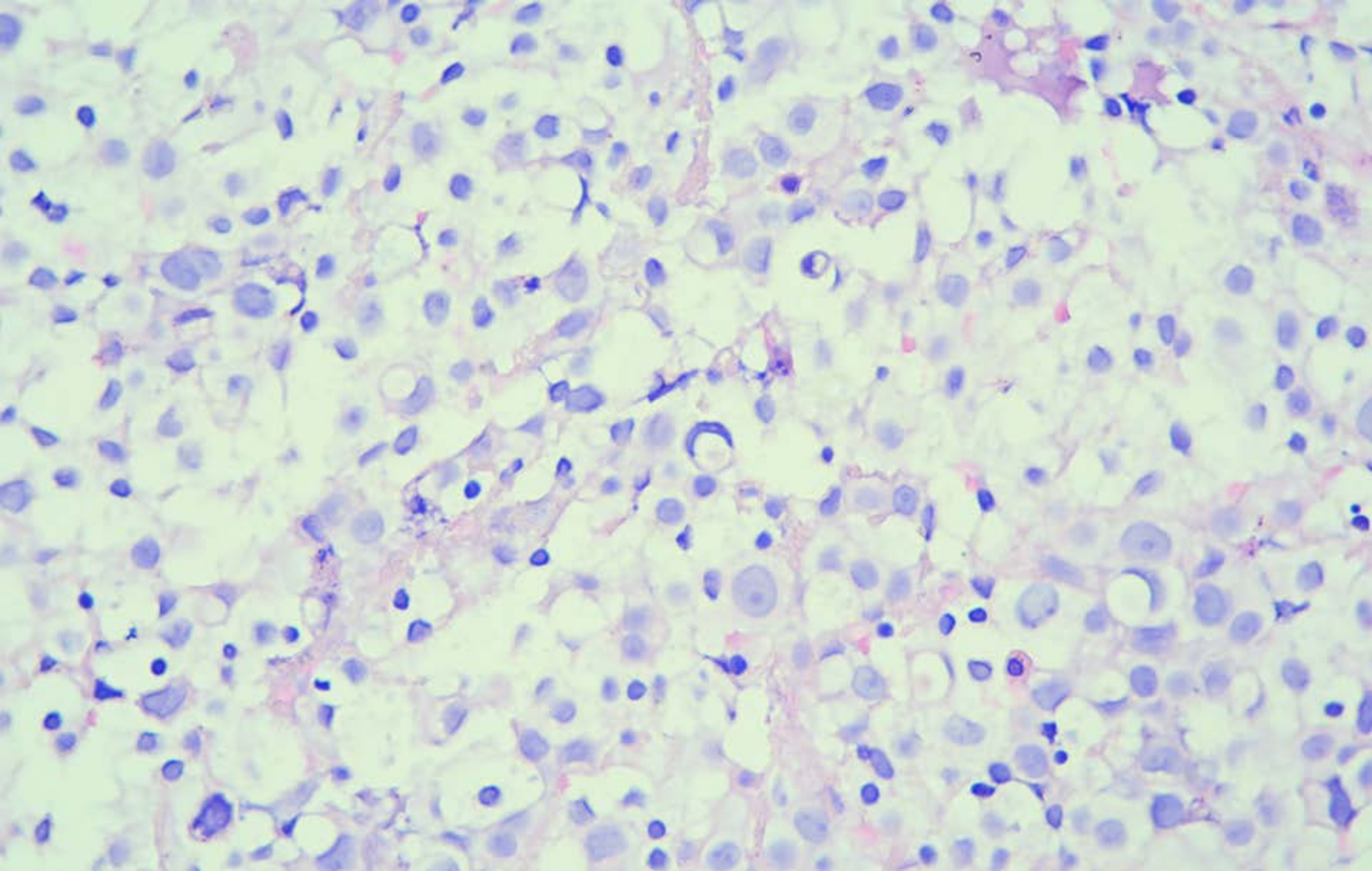
# 25. Ulusal Patoloji Kongresi

## 6. Sitopatoloji Kongresi

14 - 17 Ekim 2015 / Merinos AKKM - BURSA







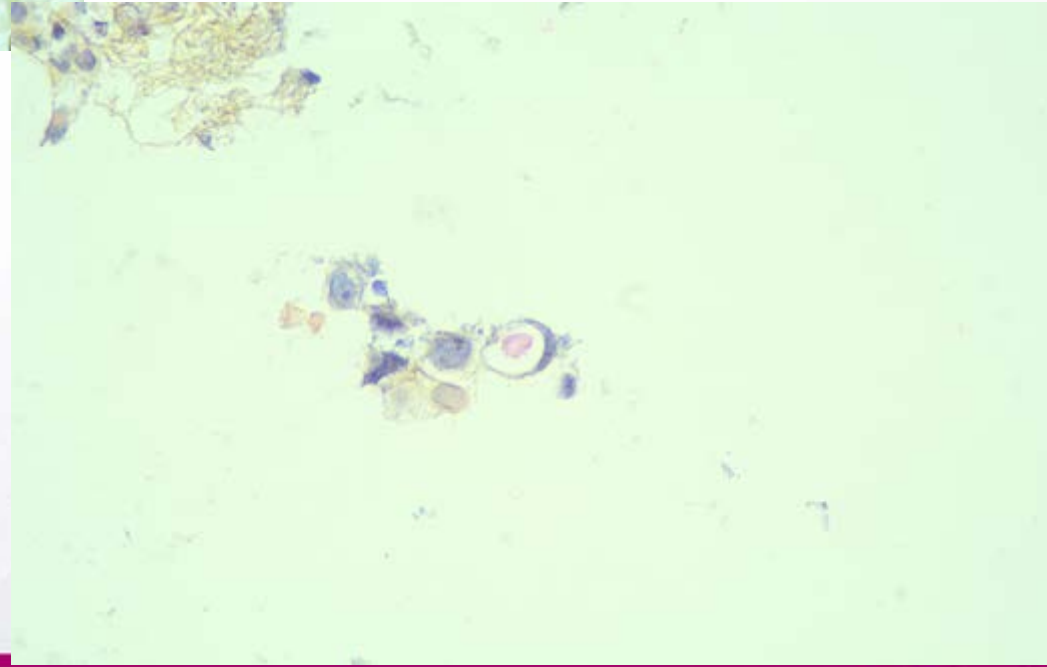
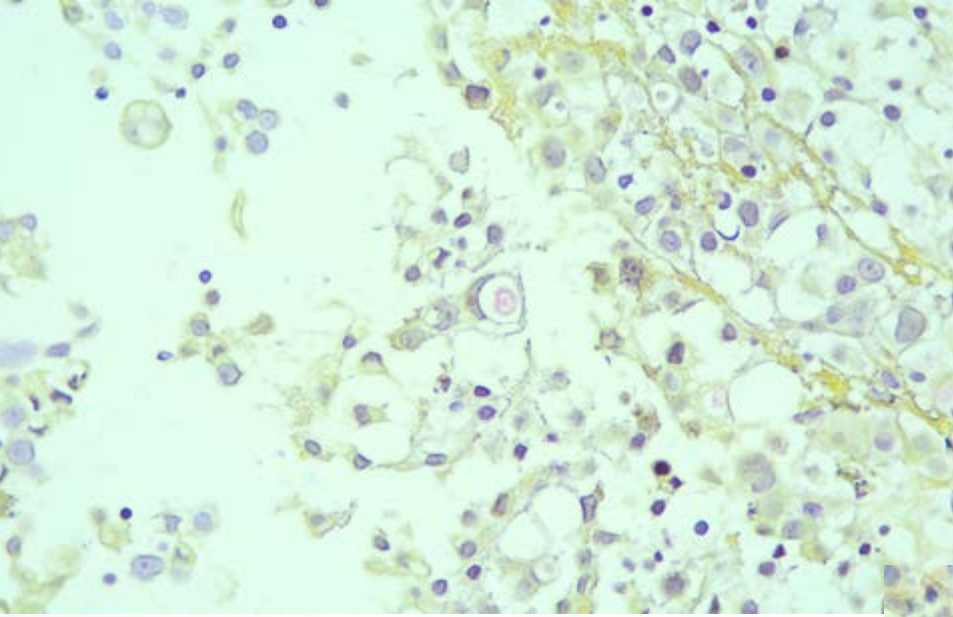
# 25. Ulusal Patoloji Kongresi

## 6. Sitopatoloji Kongresi

14 - 17 Ekim 2015 / Merinos AKKM - BURSA





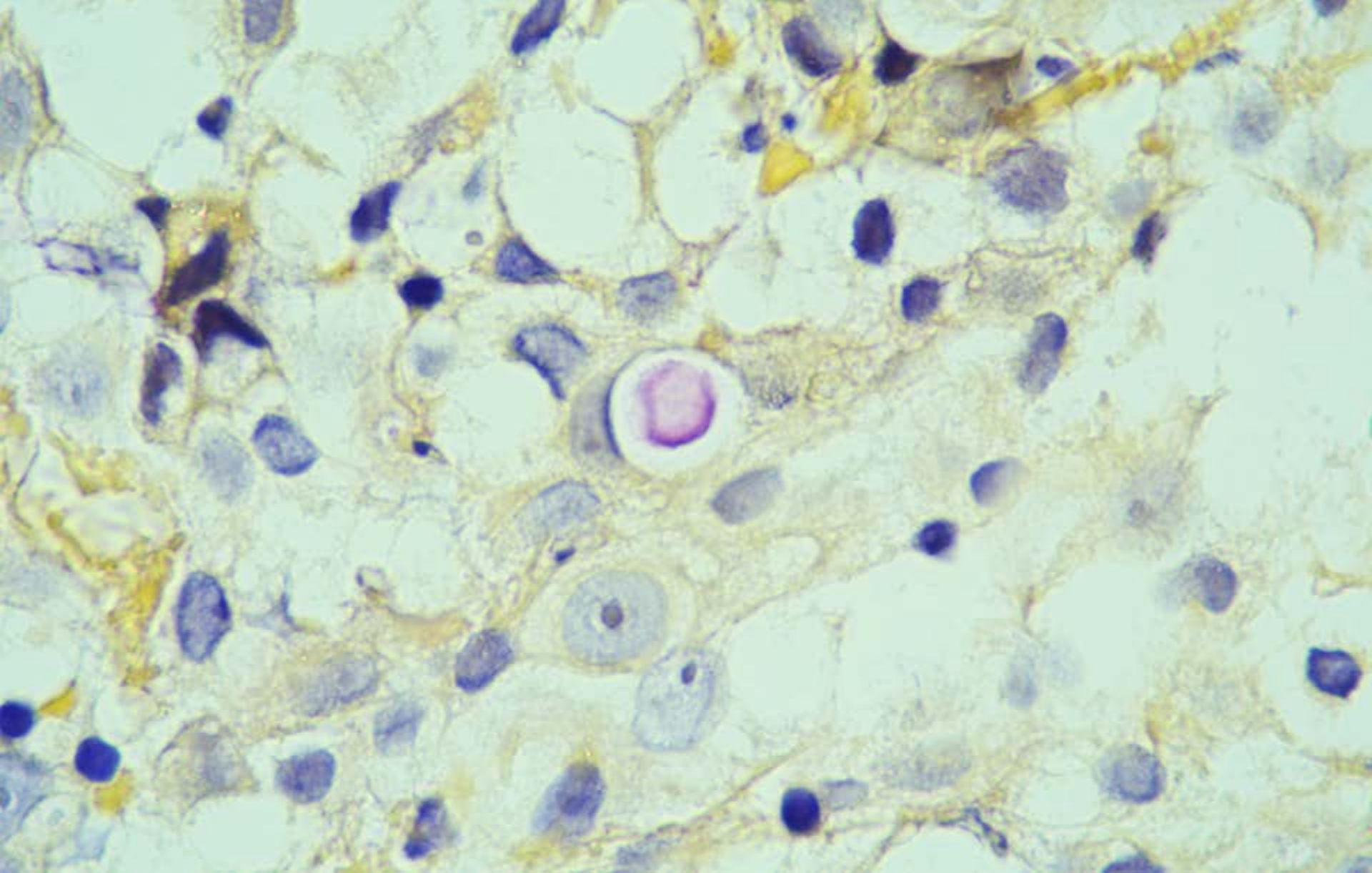


# 25. Ulusal Patoloji Kongresi

## 6. Sitopatoloji Kongresi

14 - 17 Ekim 2015 / Merinos AKKM - BURSA





# 25. Ulusal Patoloji Kongresi

## 6. Sitopatoloji Kongresi

14 - 17 Ekim 2015 / Merinos AKKM - BURSA





TANI: ADENOKARSİNOM METASTAZI  
NOT: PRİMER ODAK AÇISINDAN ÖN PLANDA GİS (MİDE) İN  
ARAŞTIRILMASI ÖNERİLİR.



**25.** Ulusal Patoloji Kongresi  
**6.** Sitopatoloji Kongresi

14 - 17 Ekim 2015 / Merinos AKKM - BURSA



# SERÖZ EFÜZYON

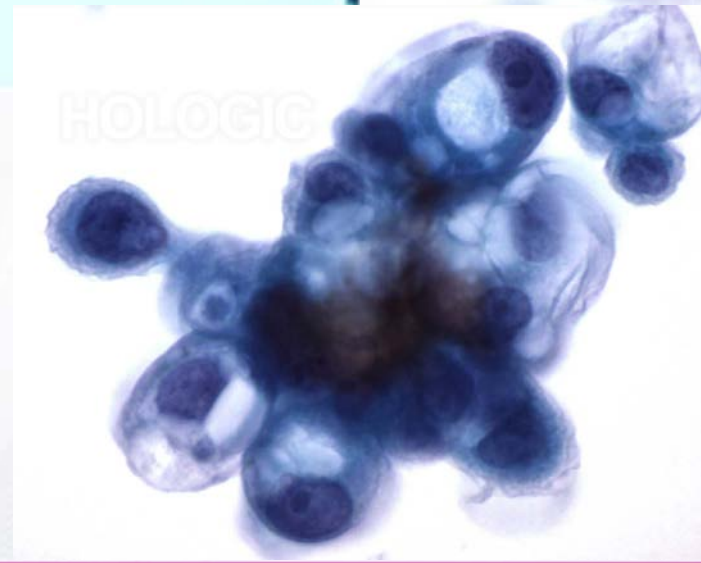
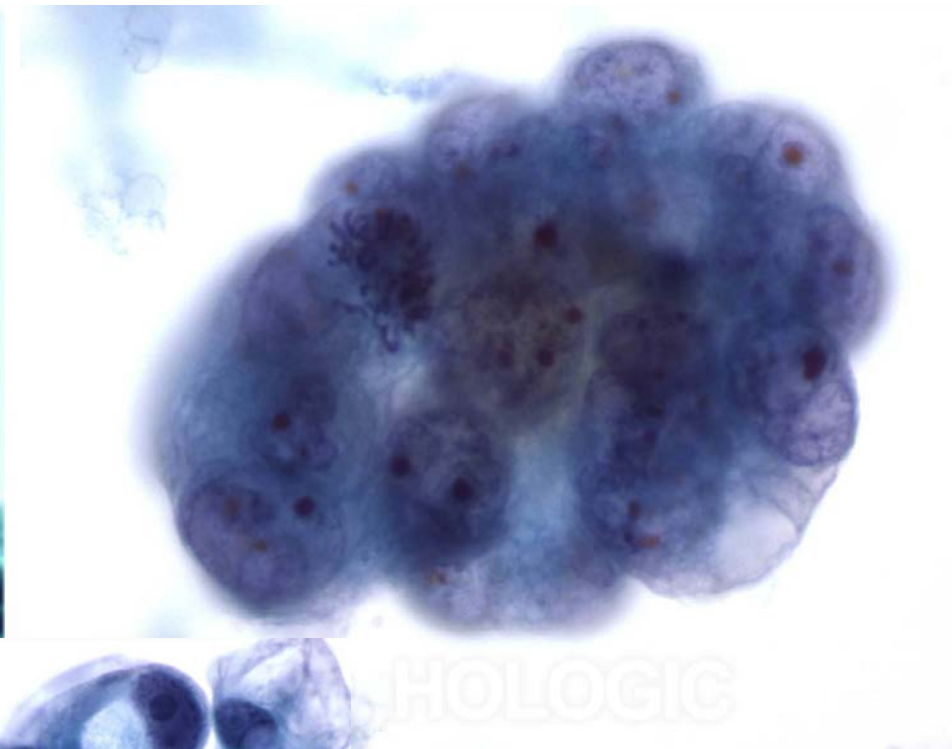
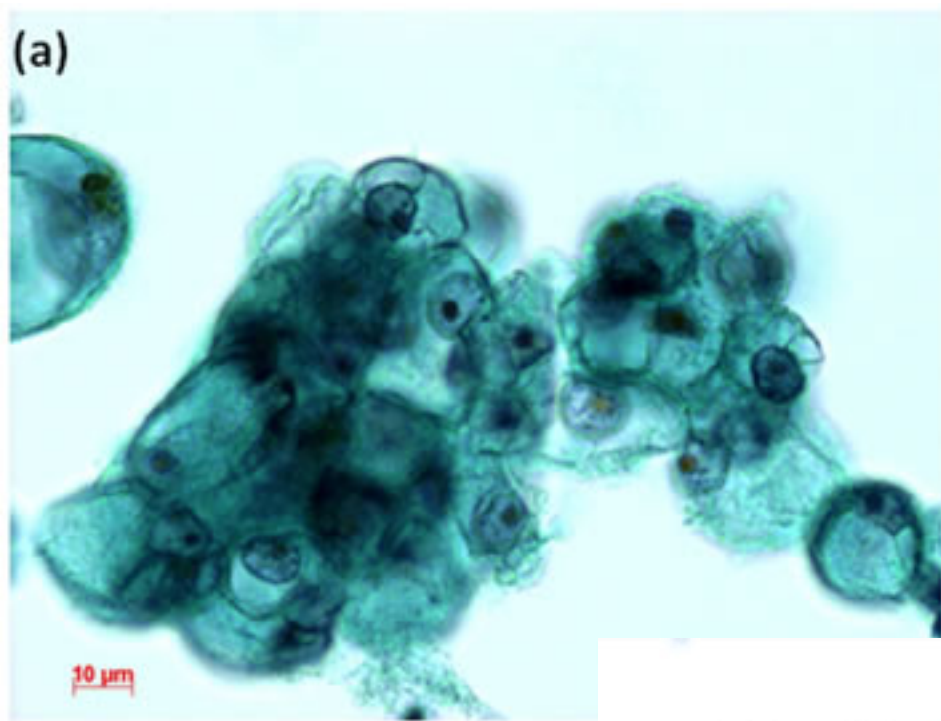
## *METASTATİK KARSİNOMLAR*

### ADENOKARSİNOM

- Düzgün kontürlü büyük hücreli koheziv gruplar
- Eksentrik yerleşimli nükleus
- Tipik malign nükleus özellikleri (hiperkromazi, membran düzensizliği, nükleol belirginliği vb.)
- Sitoplazmik vakuol





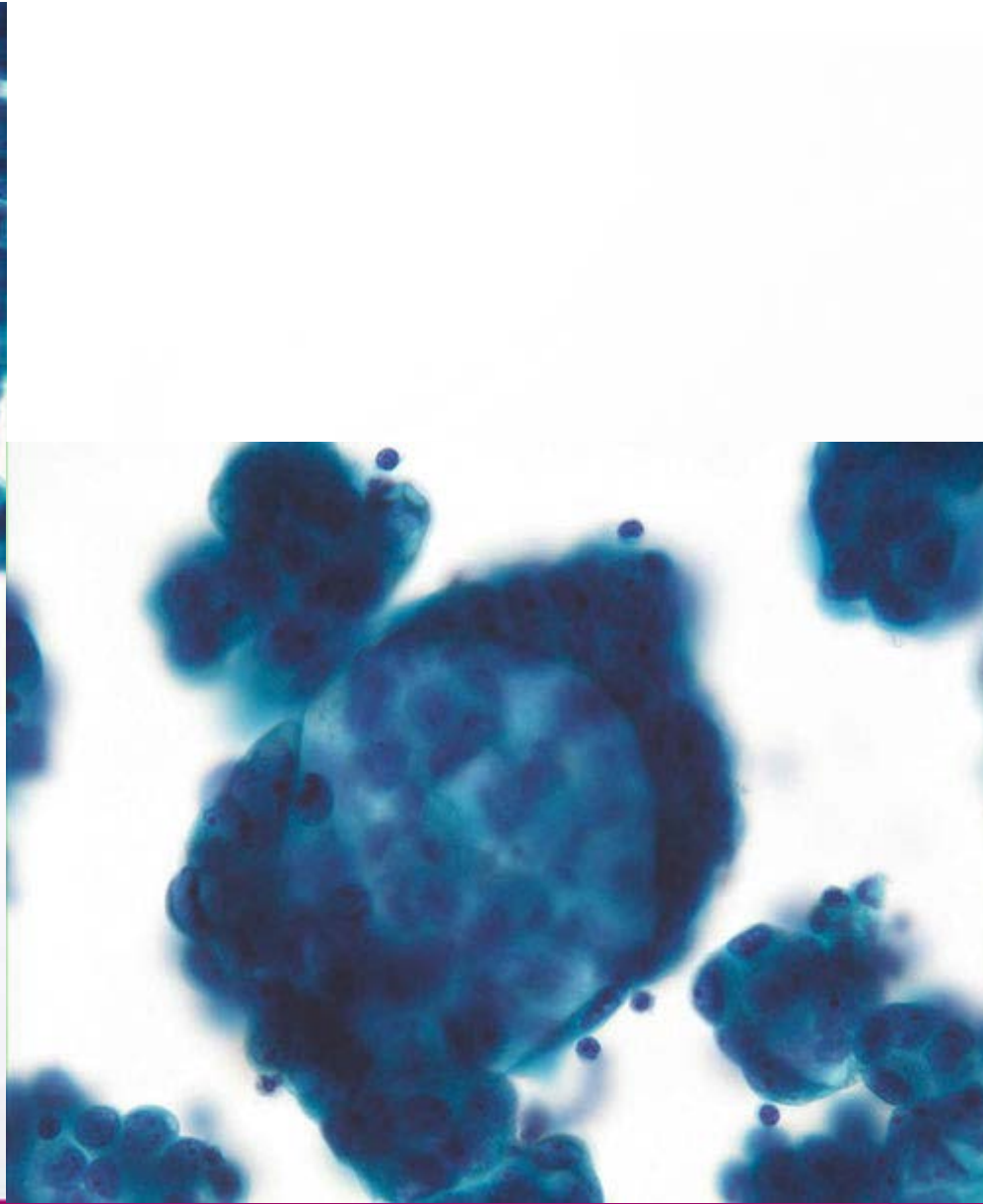
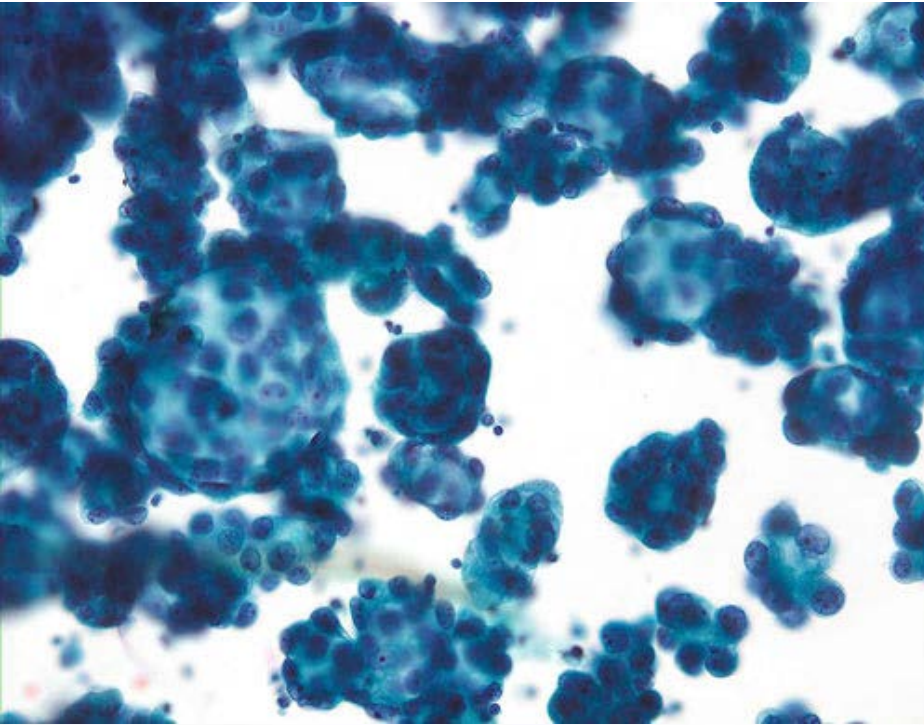


# 25. Ulusal Patoloji Kongresi

## 6. Sitopatoloji Kongresi

14 - 17 Ekim 2015 / Merinos AKKM - BURSA





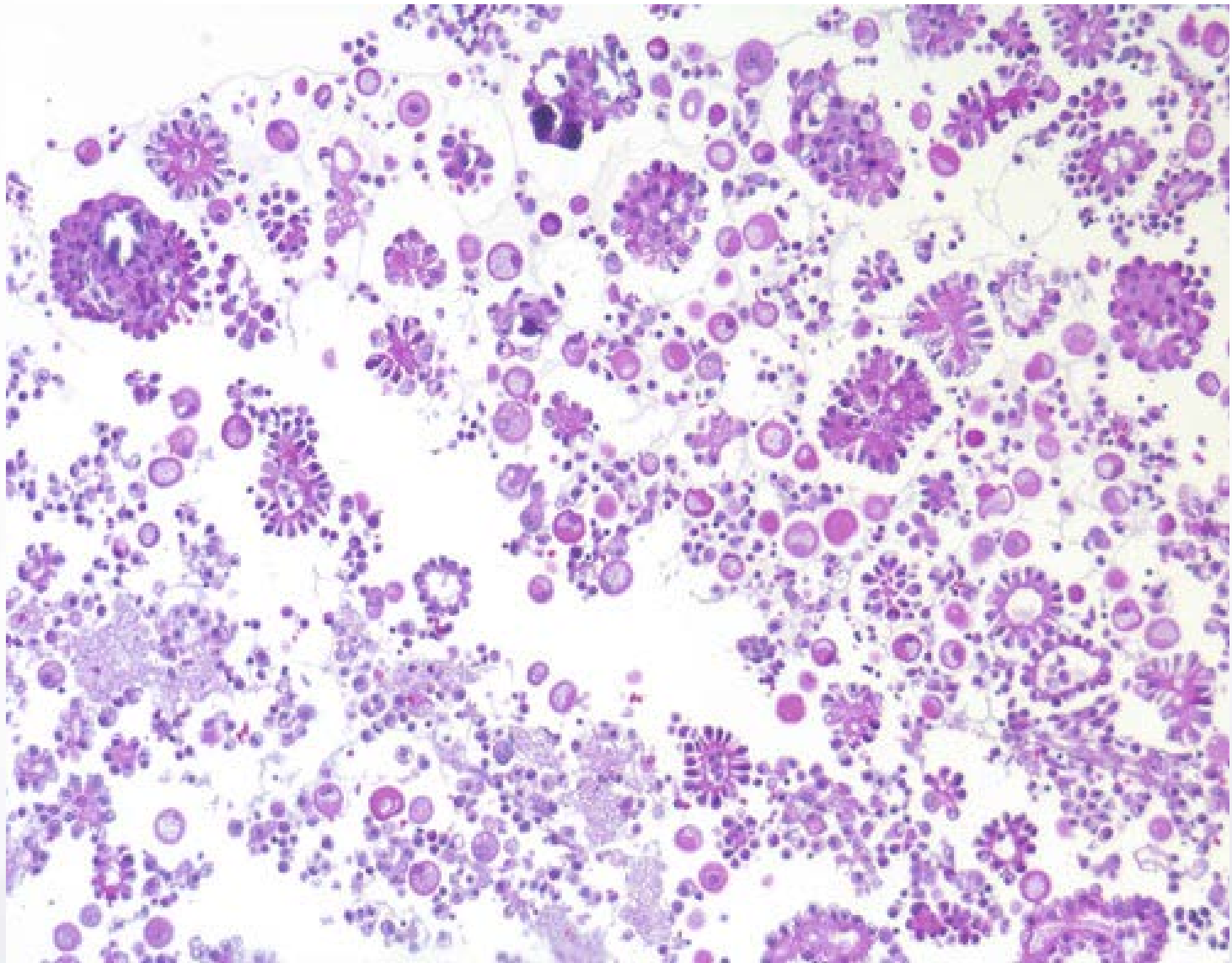
# 25. Ulusal Patoloji Kongresi

## 6. Sitopatoloji Kongresi

14 - 17 Ekim 2015 / Merinos AKKM - BURSA







# 25. Ulusal Patoloji Kongresi

## 6. Sitopatoloji Kongresi

14 - 17 Ekim 2015 / Merinos AKKM - BURSA



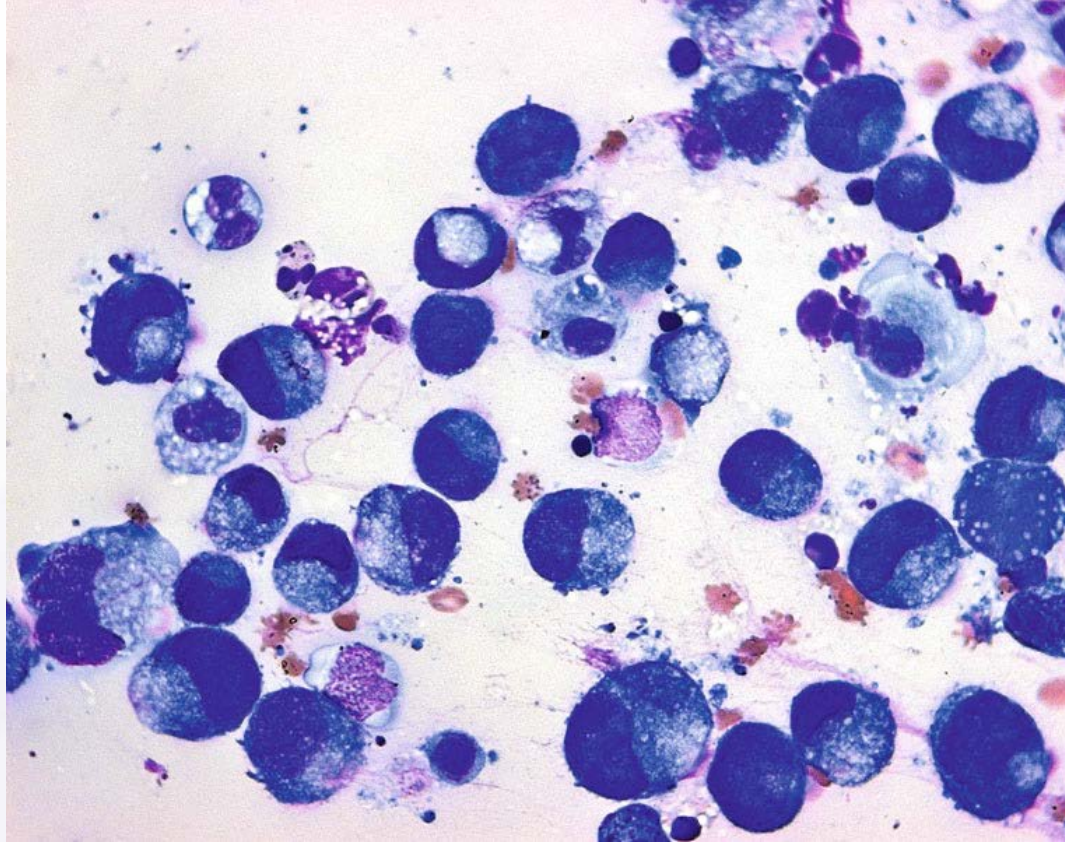
## Taşlı Yüzük Adenokarsinom ve Lobüler Karsinom

- Metastatik meme kanserlerinde ve taşlı yüzük adenokarsinomlarda yayma genelde selülerdir ama hücreler küçüktür ve dens, kompakt yuvarlak gruplar halinde izlenirler.
- Hücre bloğunda kribriform yapıda izlenebilirler.
- Her iki kanser türünde de hücreler tipik adenokarsinom hücreleri kadar pleomorfik değildir.
- Lobular karsinomlarda küçük hücreli karsinomu andıran, uzun yada kısa zincir şeklinde yapılar izlenebilir.





- Midenin taşlı yüzük karsinomlarında ve memenin lobular karsinomlarında bazı tümör hücreleri sakin görünümlü nükleuslara sahip küçük hücreler olabilirler. Fakat hiperkromazisi ve sitoplazma çekirdek oranıyla mezotel hücrelerinden ayırt etmek mümkündür.

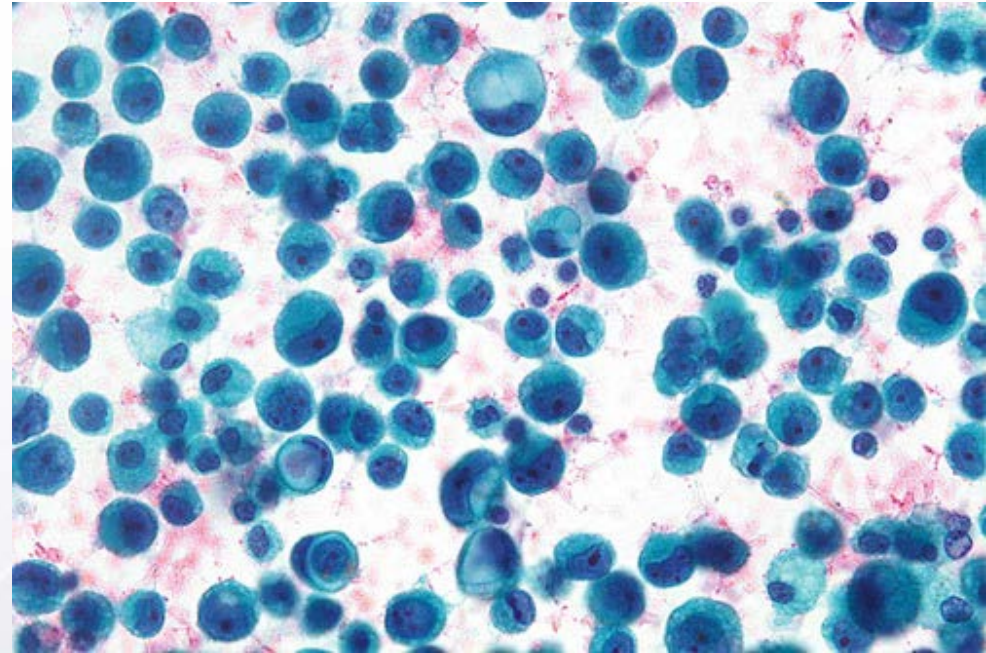
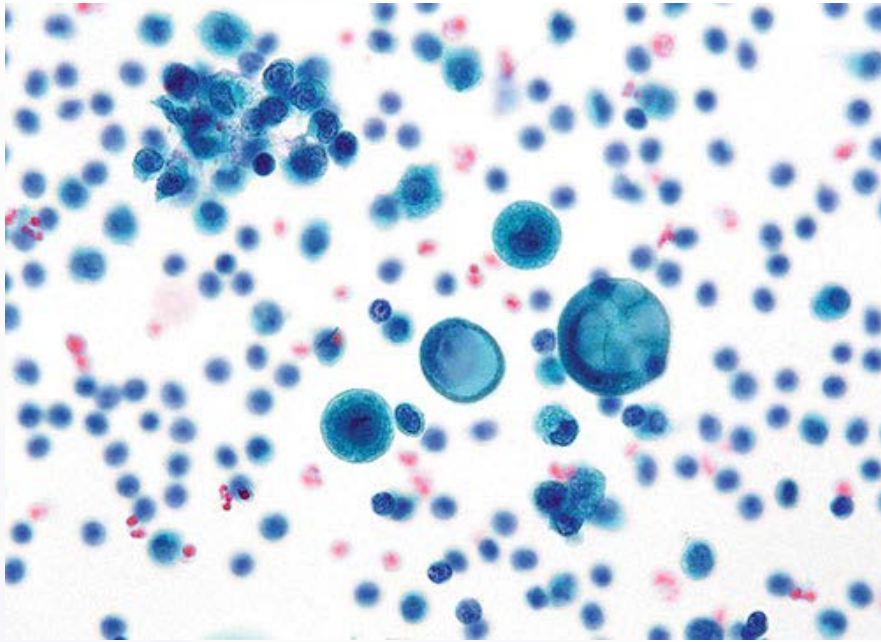


**25.** Ulusal Patoloji Kongresi  
**6.** Sitopatoloji Kongresi

14 - 17 Ekim 2015 / Merinos AKKM - BURSA



# GASTRIC SIGNET RING CARCINOMA



© iStockphoto.com/PhotoDisc

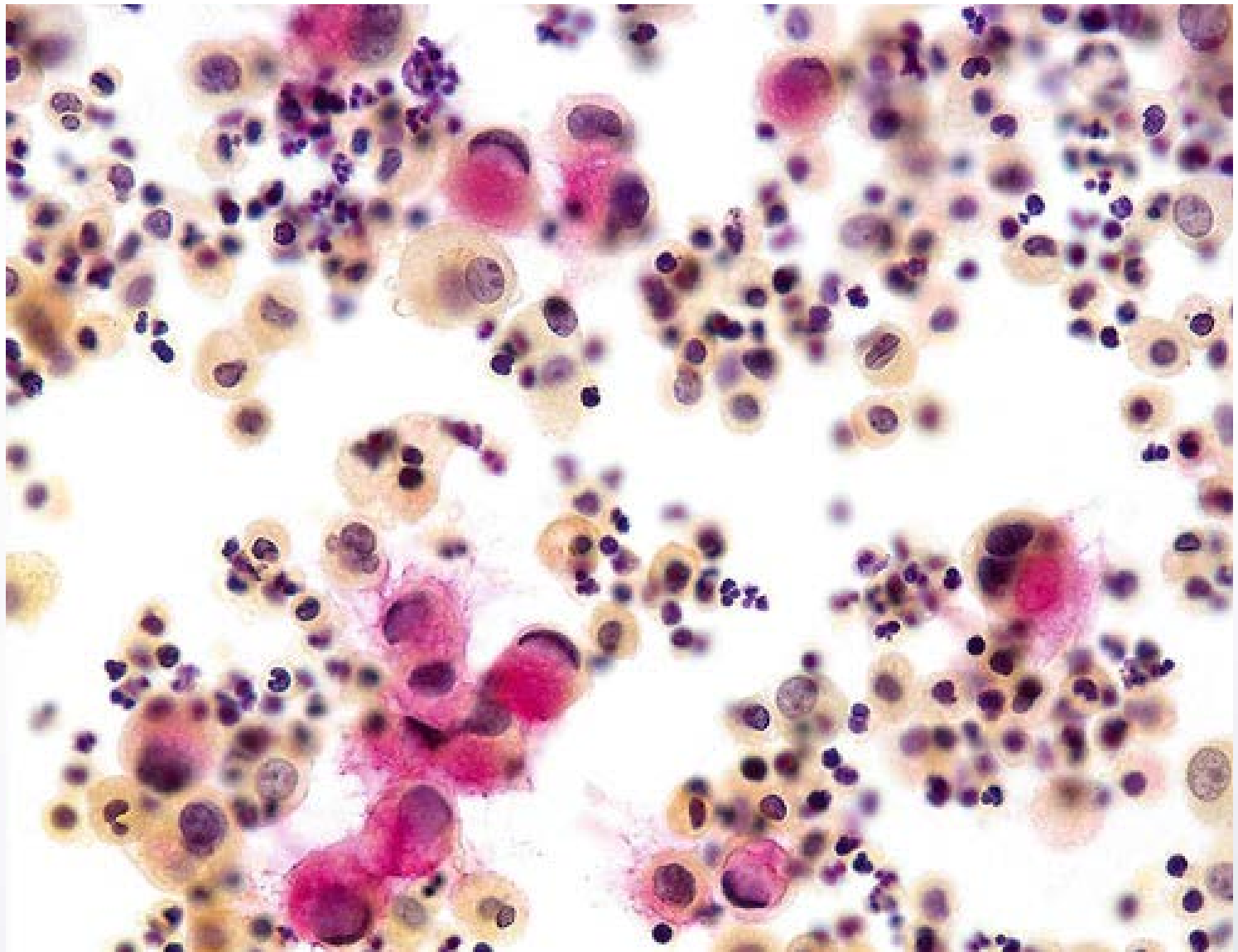


**25.** Ulusal Patoloji Kongresi  
**6.** Sitopatoloji Kongresi

14 - 17 Ekim 2015 / Merinos AKKM - BURSA





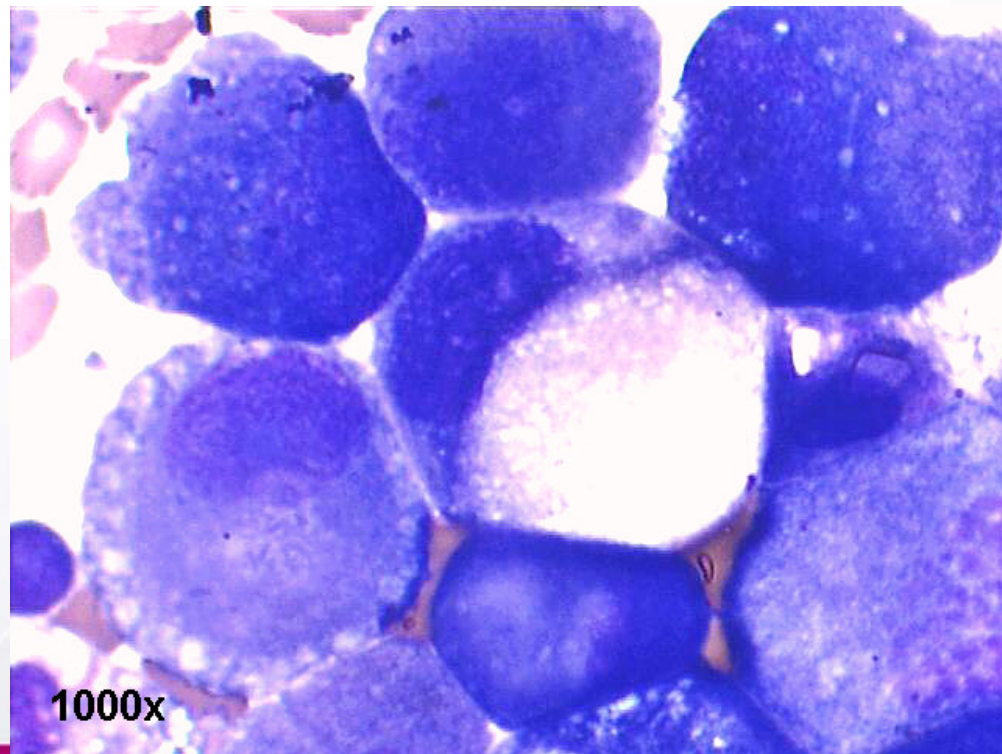
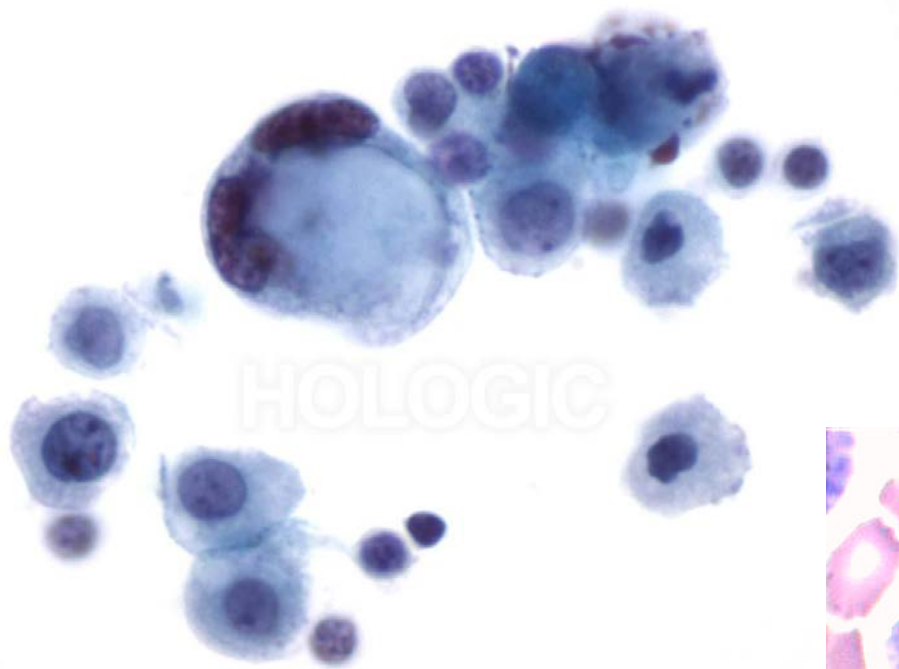


# 25. Ulusal Patoloji Kongresi

## 6. Sitopatoloji Kongresi

14 - 17 Ekim 2015 / Merinos AKKM - BURSA





more cute stuff at [JUSTCUTEANIMALS.COM](http://JUSTCUTEANIMALS.COM)



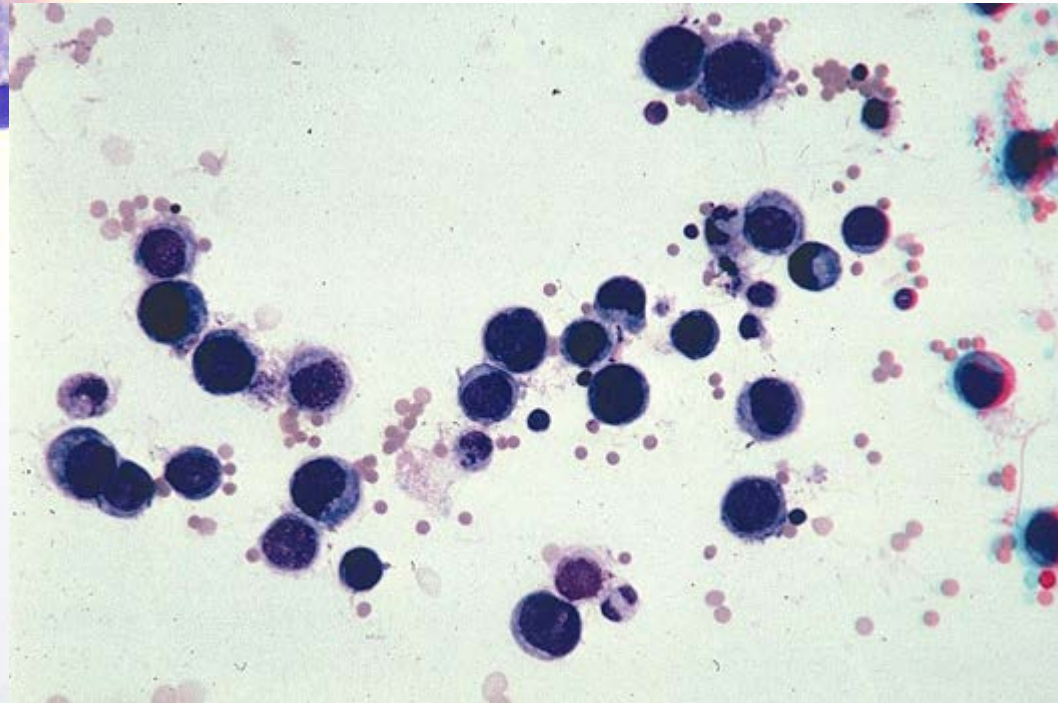
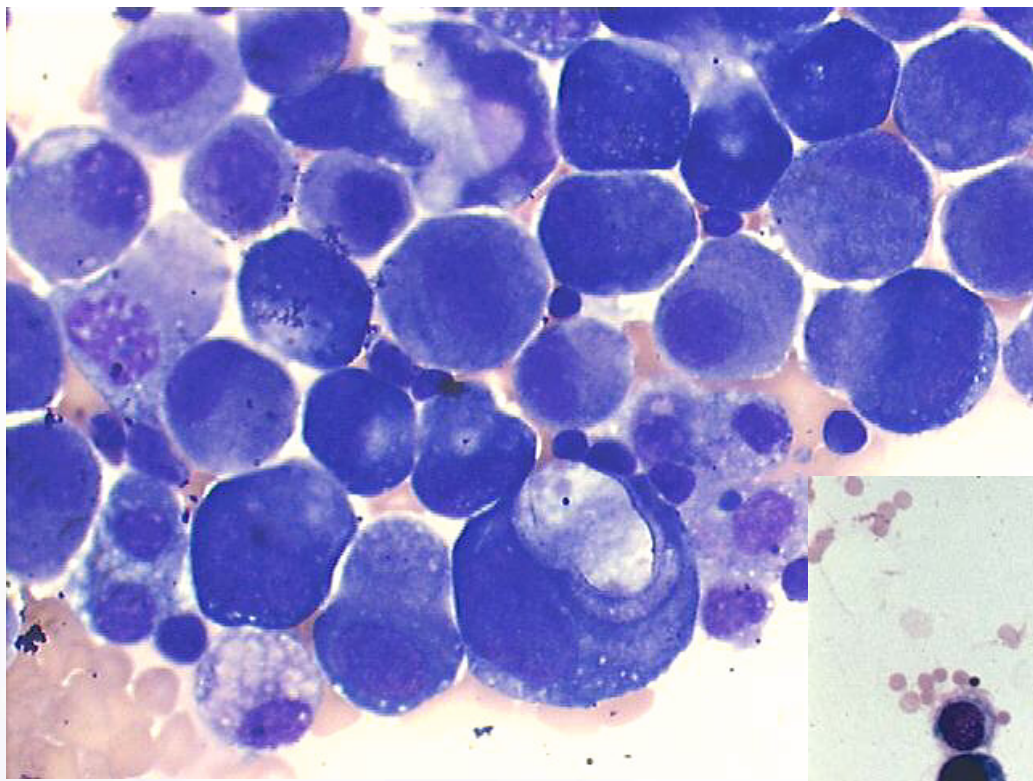
# 25. Ulusal Patoloji Kongresi

## 6. Sitopatoloji Kongresi

14 - 17 Ekim 2015 / Merinos AKKM - BURSA





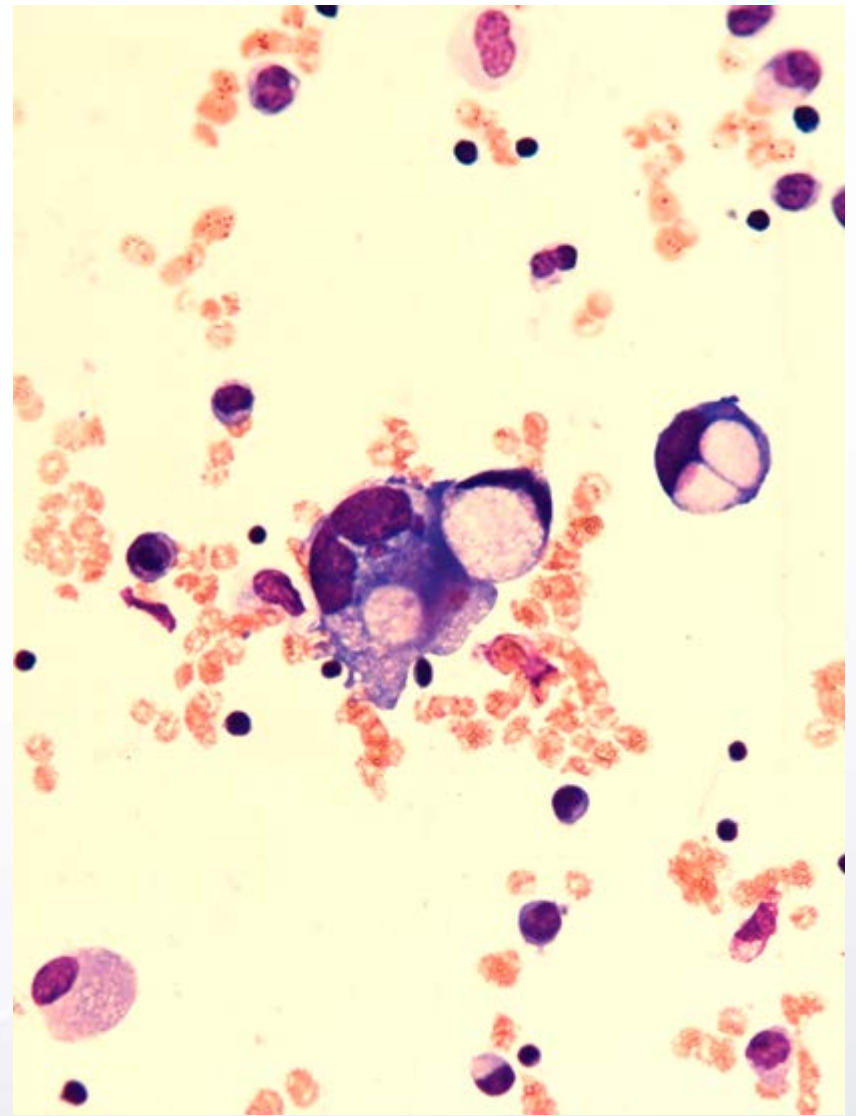
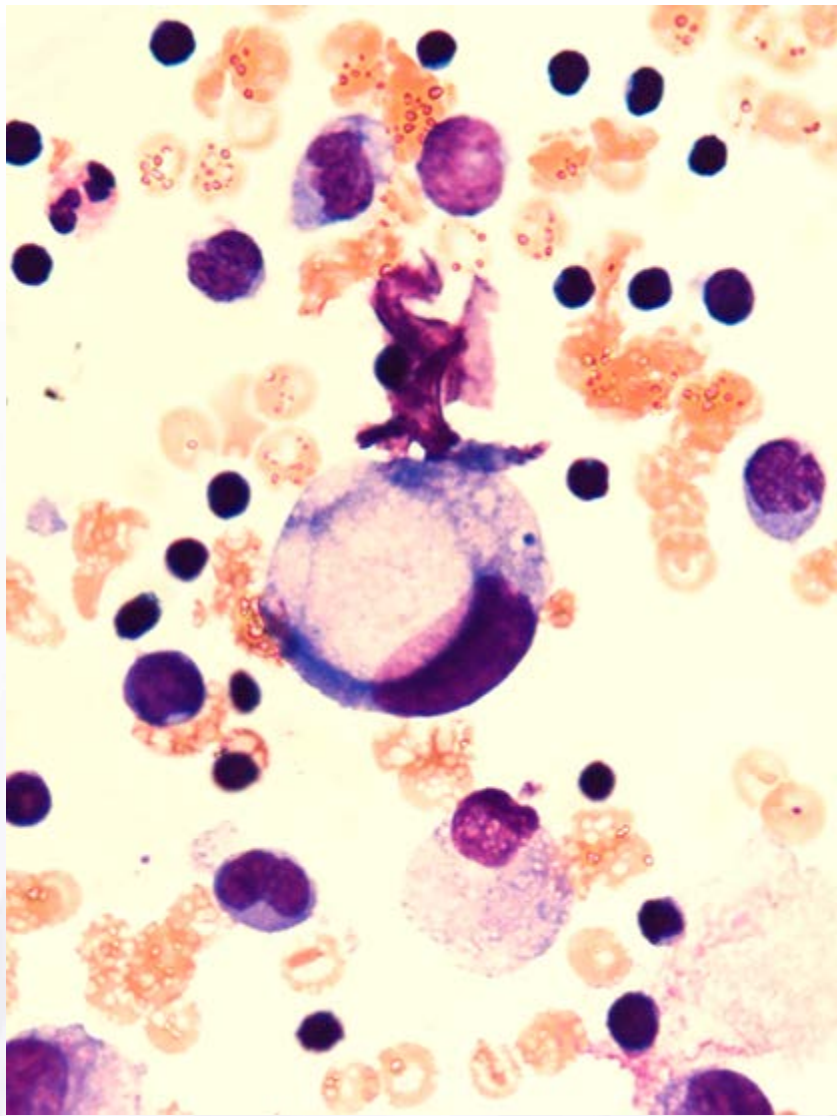


# 25. Ulusal Patoloji Kongresi

## 6. Sitopatoloji Kongresi

14 - 17 Ekim 2015 / Merinos AKKM - BURSA





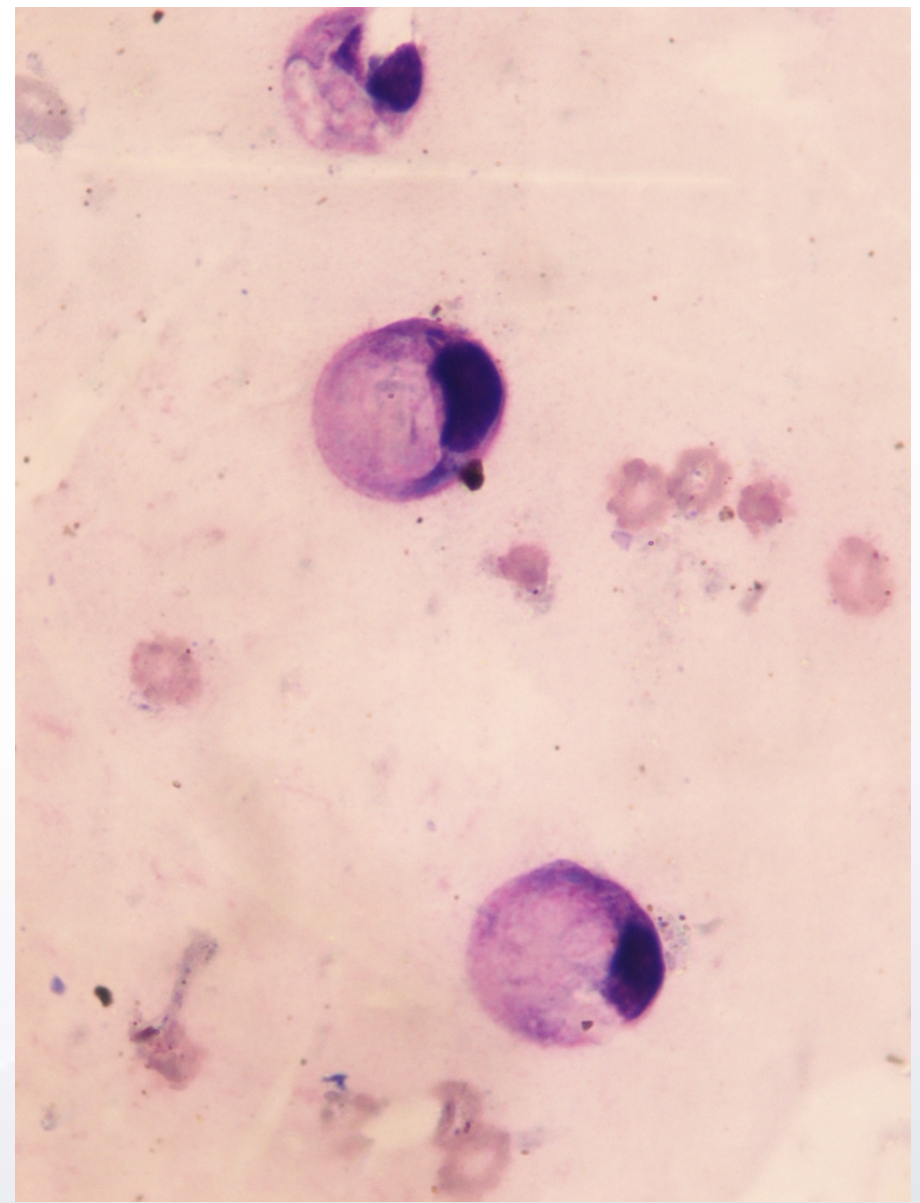
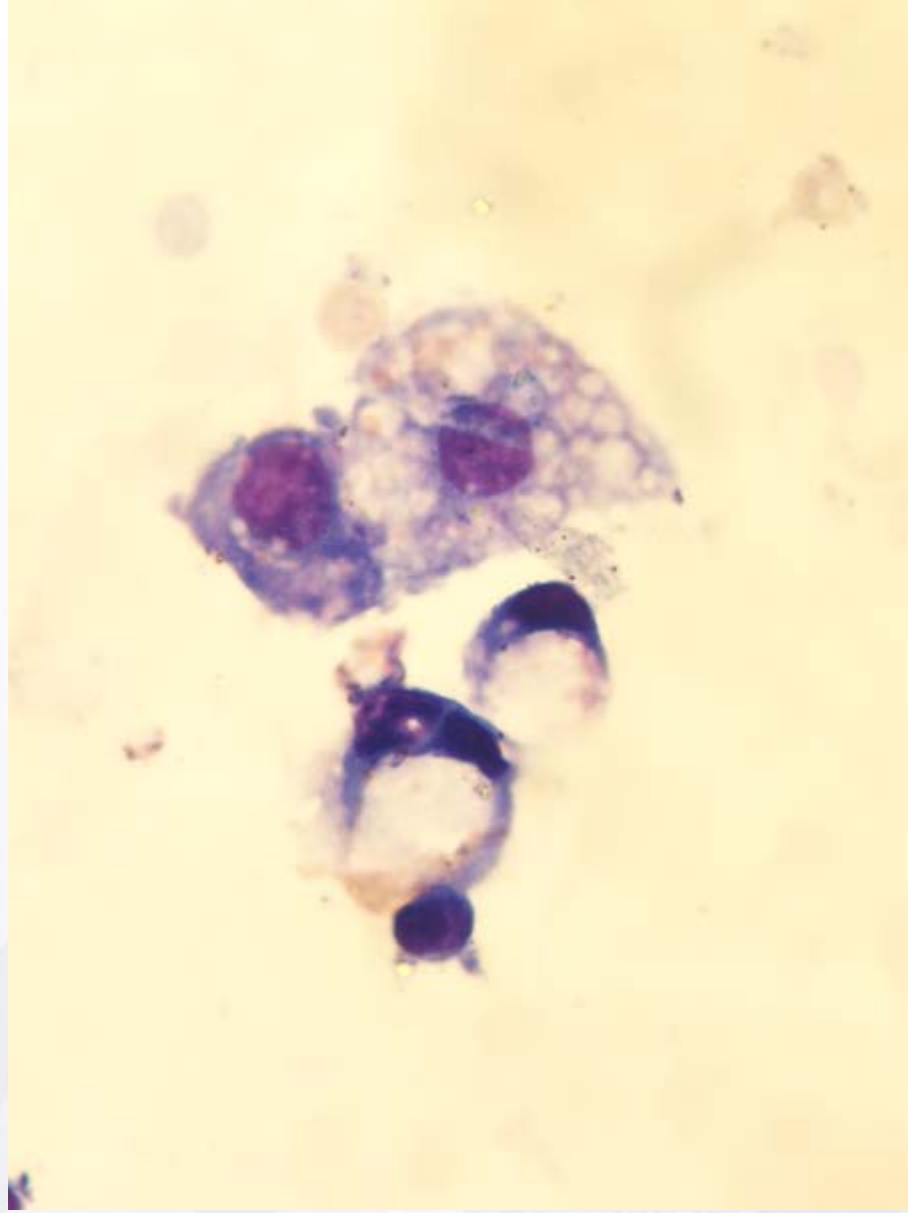
# 25. Ulusal Patoloji Kongresi

## 6. Sitopatoloji Kongresi

14 - 17 Ekim 2015 / Merinos AKKM - BURSA





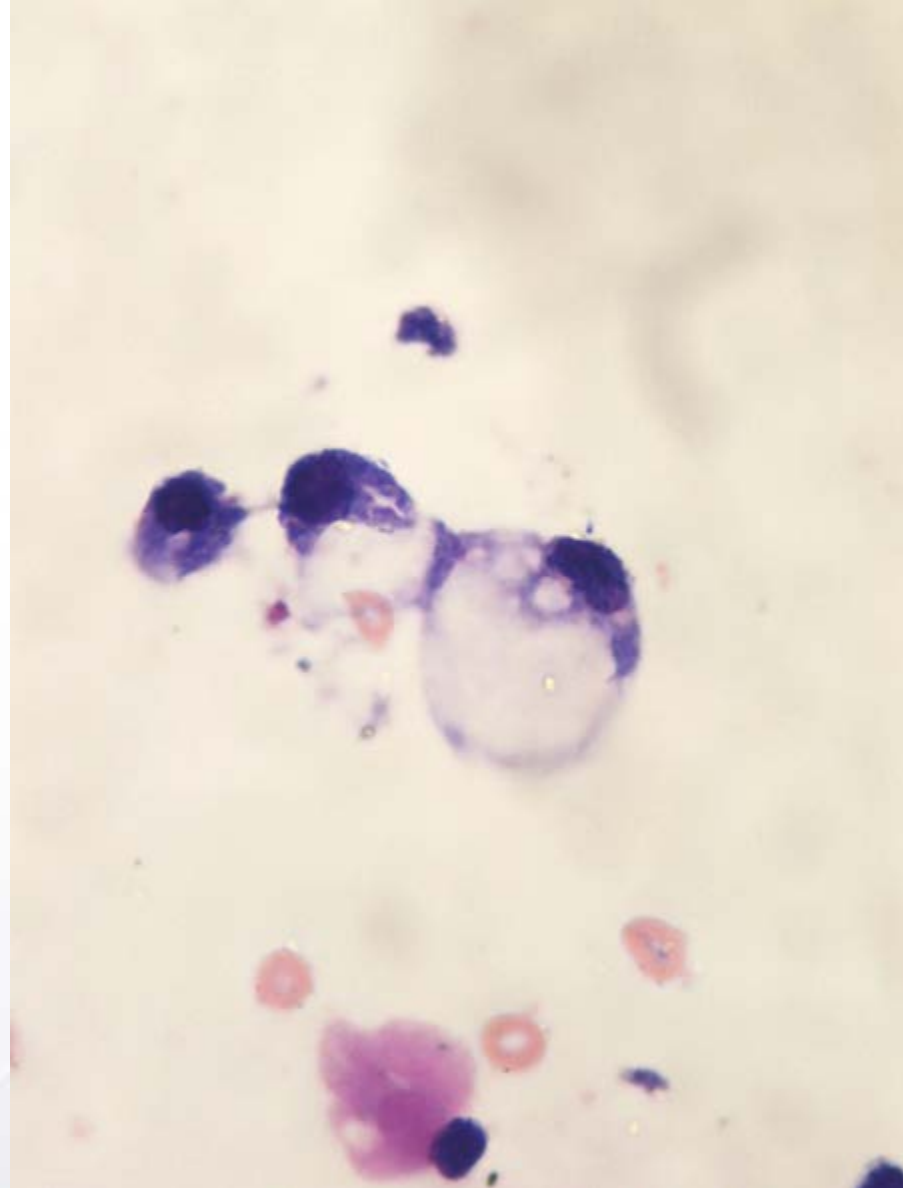
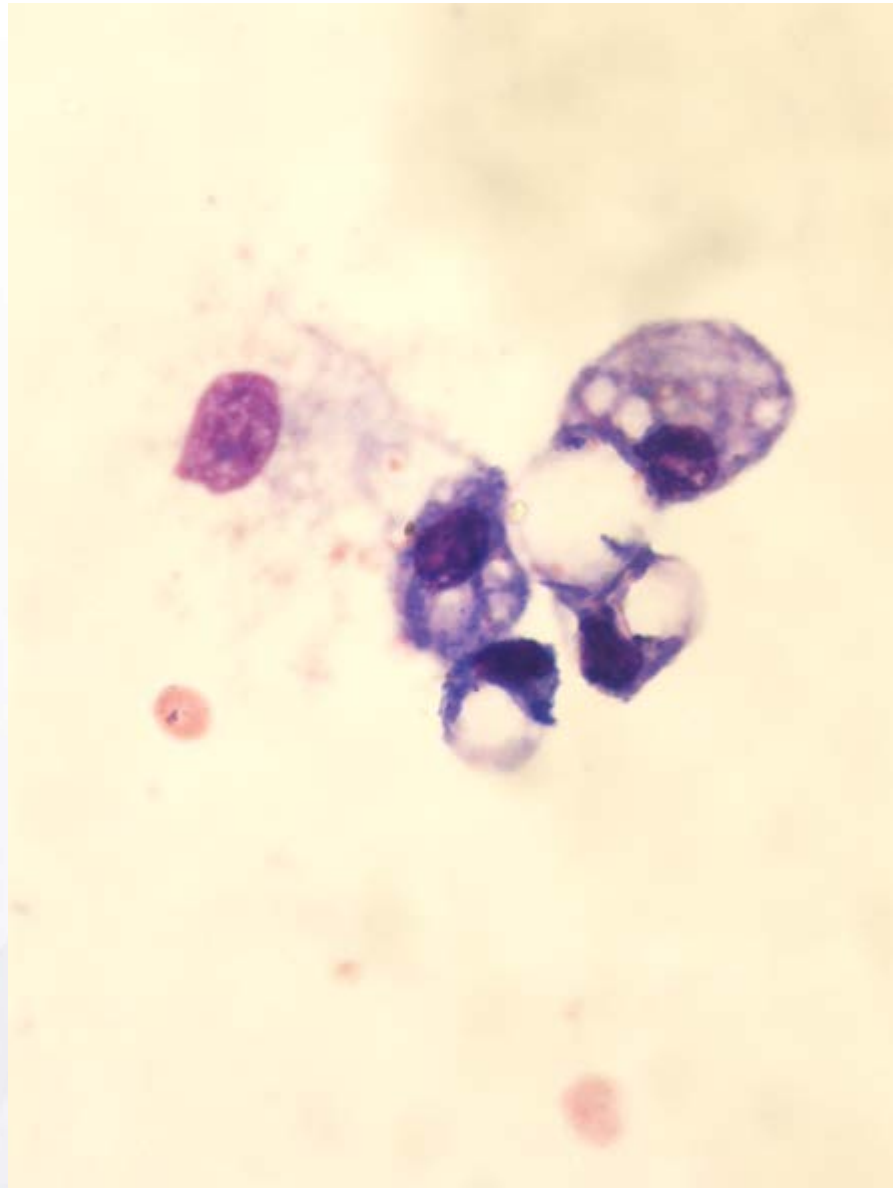


# 25. Ulusal Patoloji Kongresi

## 6. Sitopatoloji Kongresi

14 - 17 Ekim 2015 / Merinos AKKM - BURSA





# 25. Ulusal Patoloji Kongresi

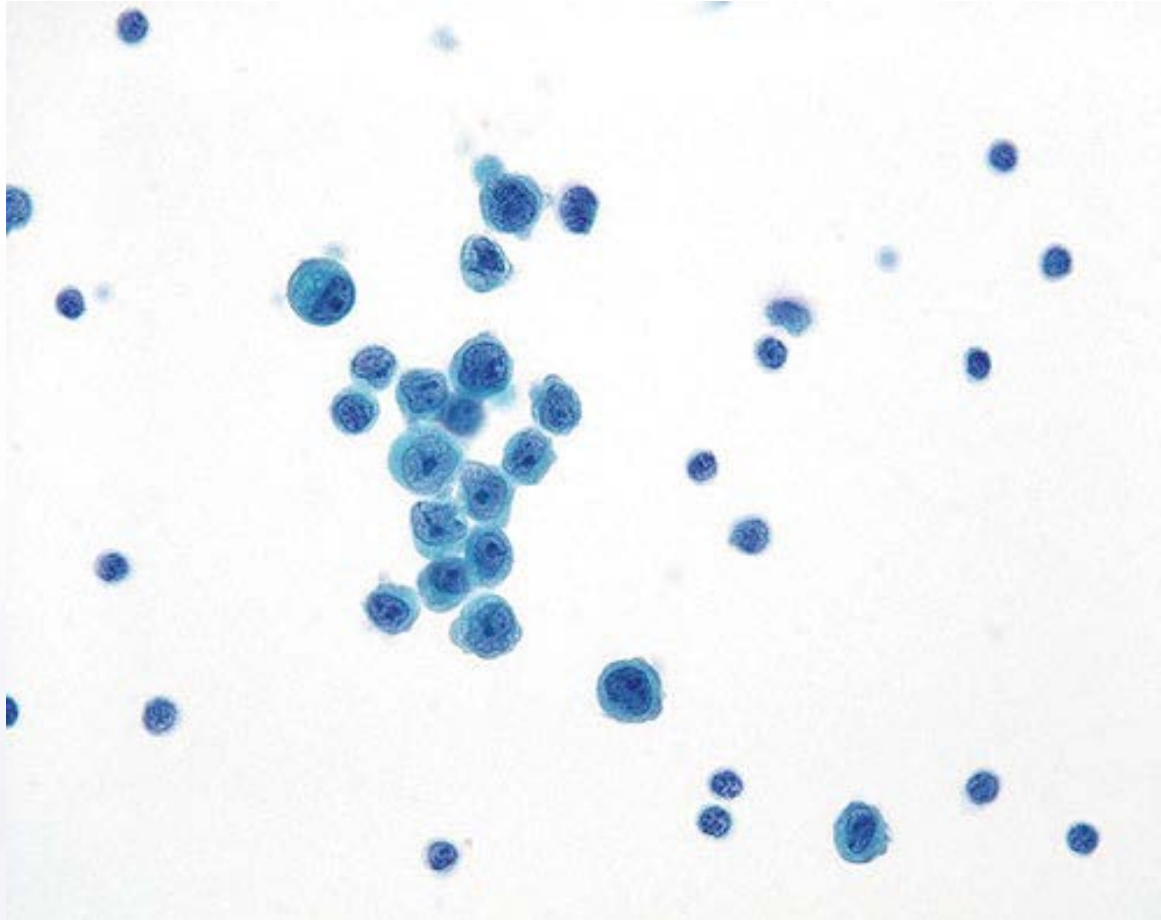
## 6. Sitopatoloji Kongresi

14 - 17 Ekim 2015 / Merinos AKKM - BURSA





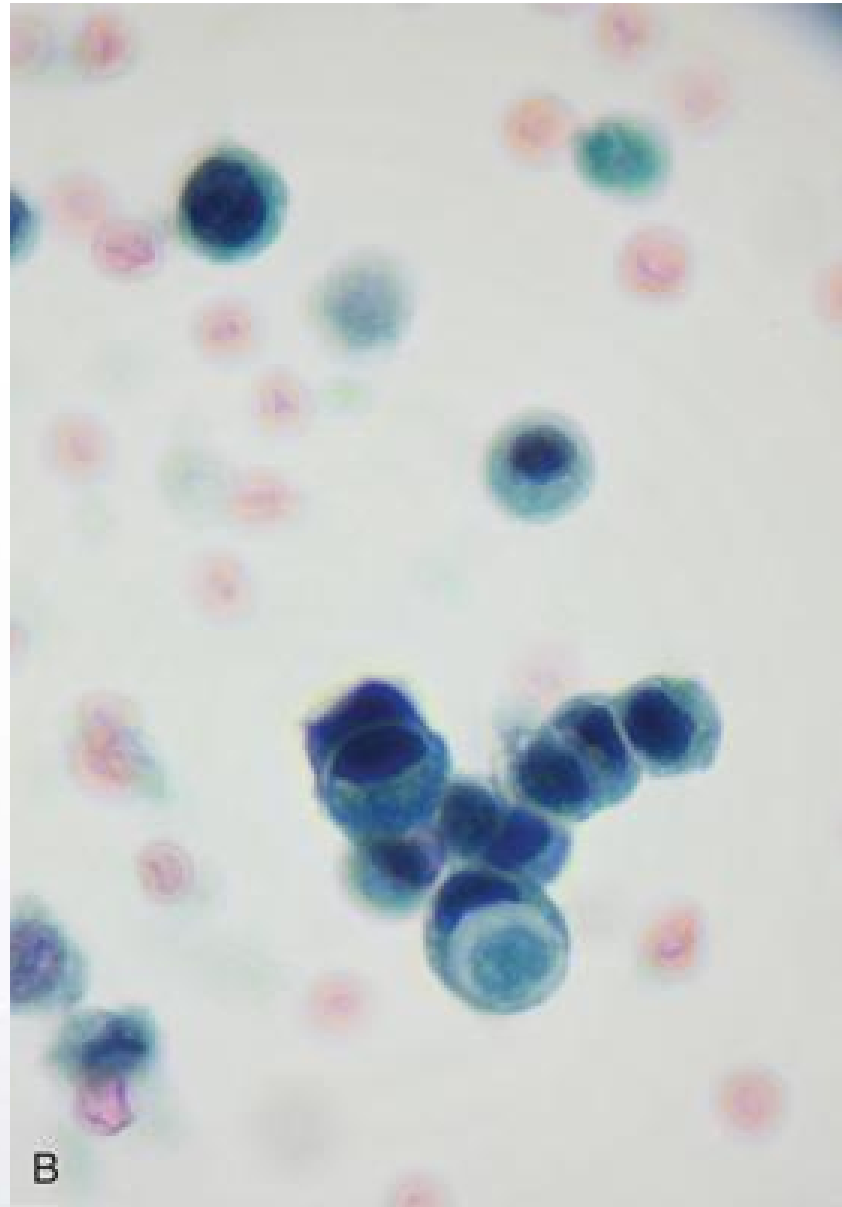
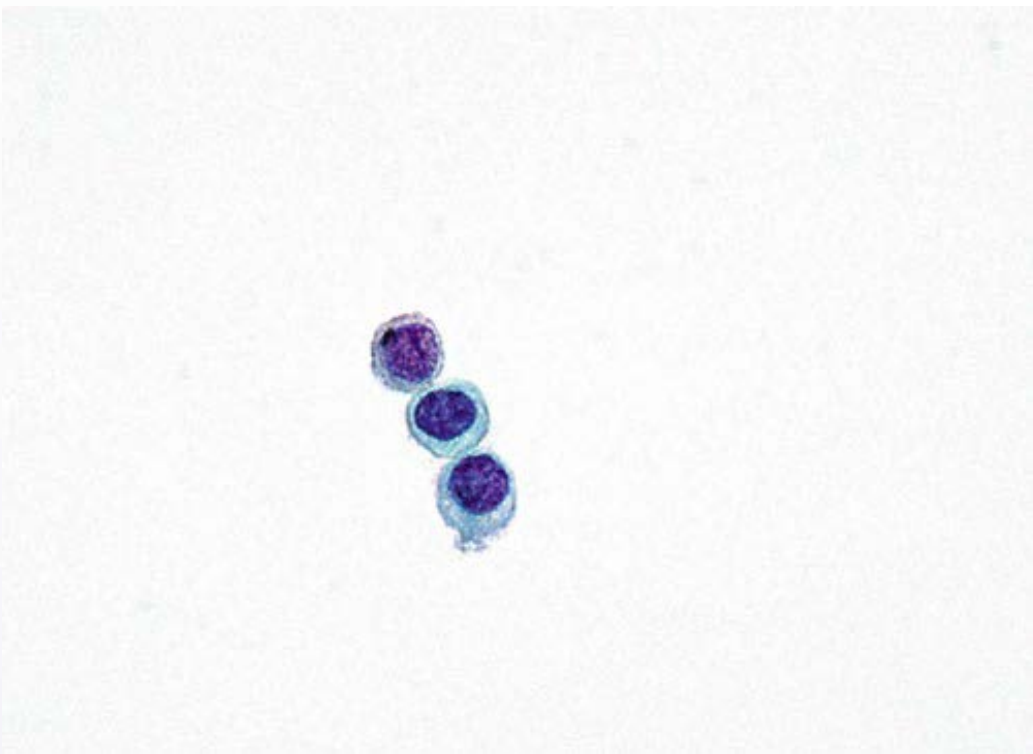
# LOBULAR CARCINOMA



**25** Ulusal Patoloji Kongresi  
**6.** Sitopatoloji Kongresi

14 - 17 Ekim 2015 / Merinos AKKM - BURSA





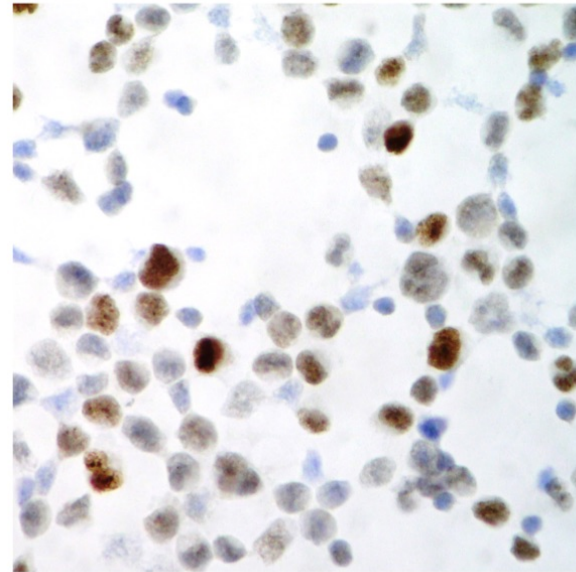
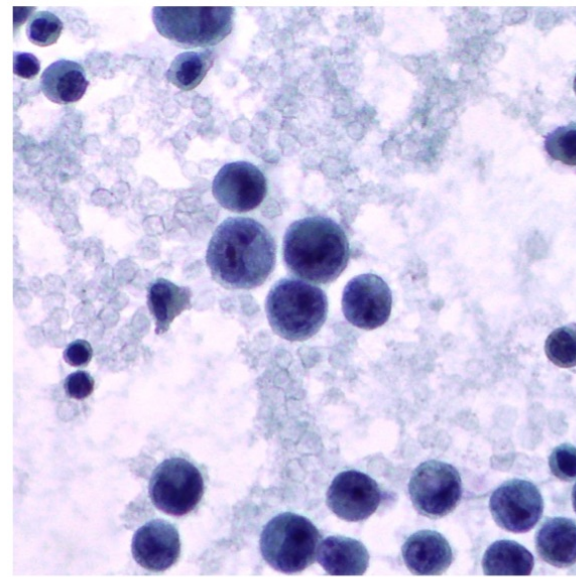
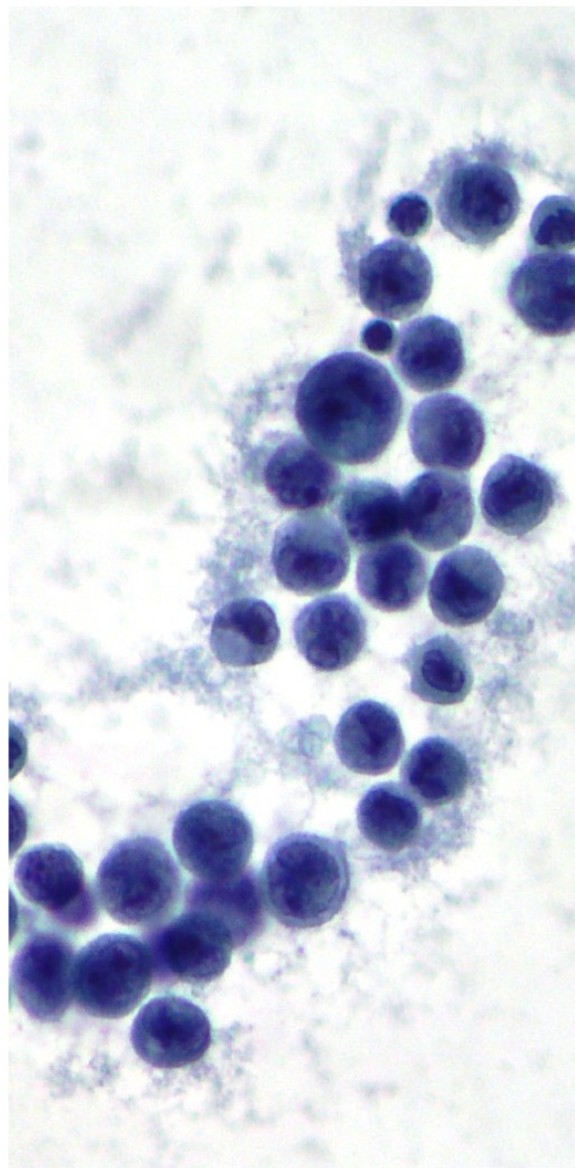
# 25. Ulusal Patoloji Kongresi

## 6. Sitopatoloji Kongresi

14 - 17 Ekim 2015 / Merinos AKKM - BURSA







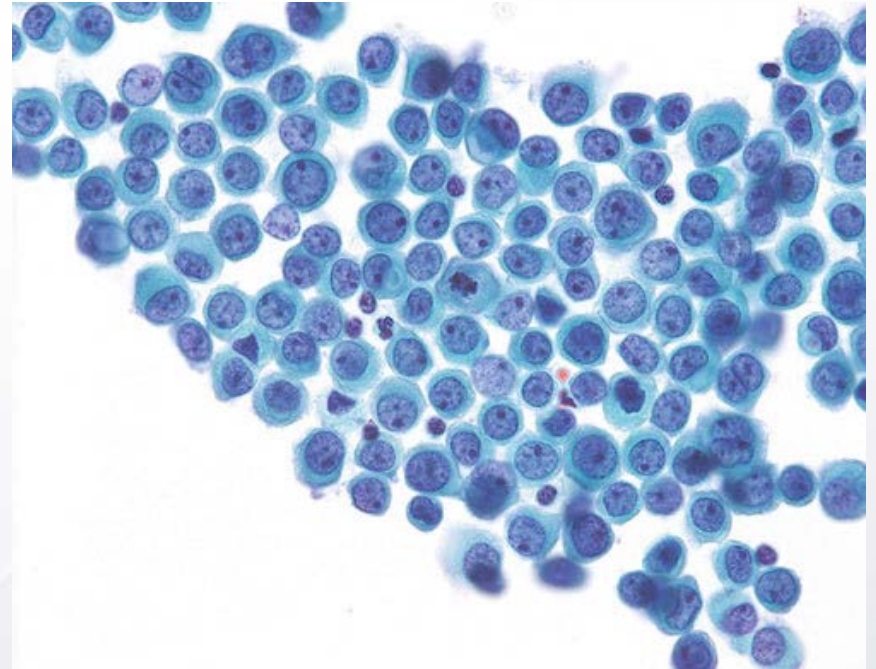
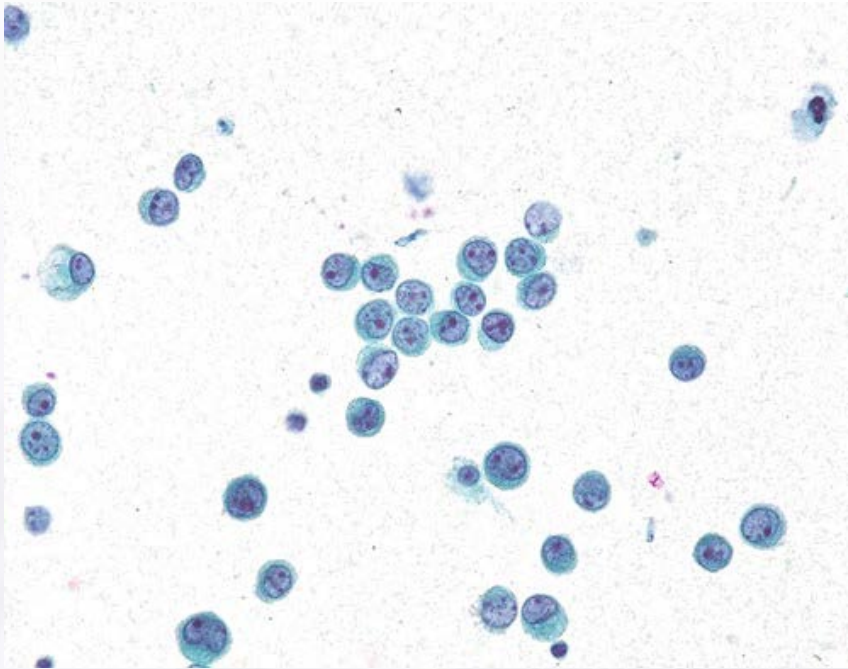
# 25. Ulusal Patoloji Kongresi

## 6. Sitopatoloji Kongresi

14 - 17 Ekim 2015 / Merinos AKKM - BURSA



# Gastric Adenocarcinoma or Lobular Carcinoma ?



**25** Ulusal Patoloji Kongresi  
**6** Sitopatoloji Kongresi

14 - 17 Ekim 2015 / Merinos AKKM - BURSA





## REAKTİF MEZOTEL HÜCRELERİ

- Nükleusları, membran bütünlüğü korunmuş yuvarlak yada oval yapılıdır
- Veziküler veya granüler kromatinlidirler.
- Koyu boyanmış, geniş sitoplazmalı hücrelerdir.
- Binükleasyon ve multinükleasyon sık görülür.
- Sitoplamik vakuoller bulunur.

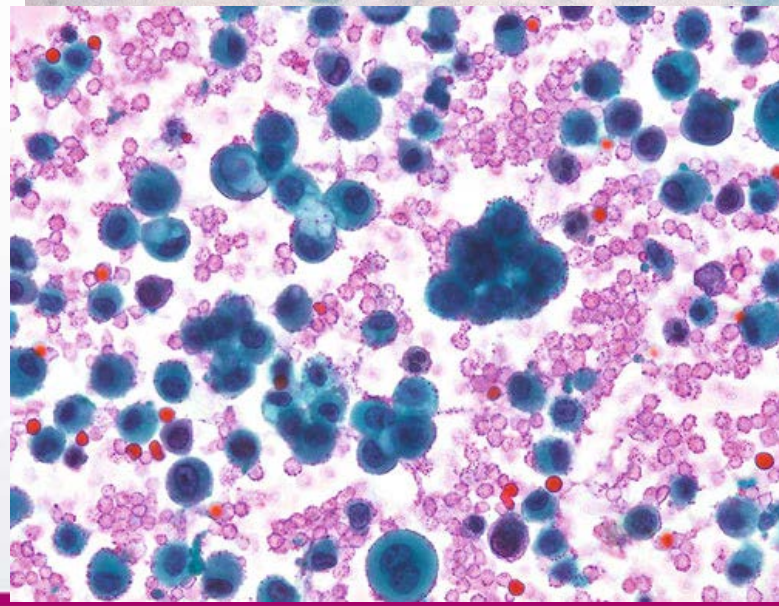
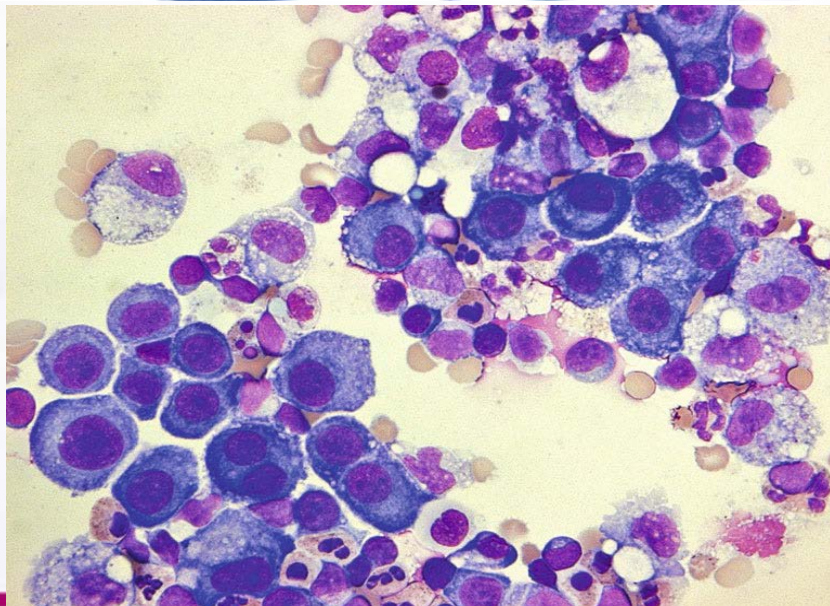
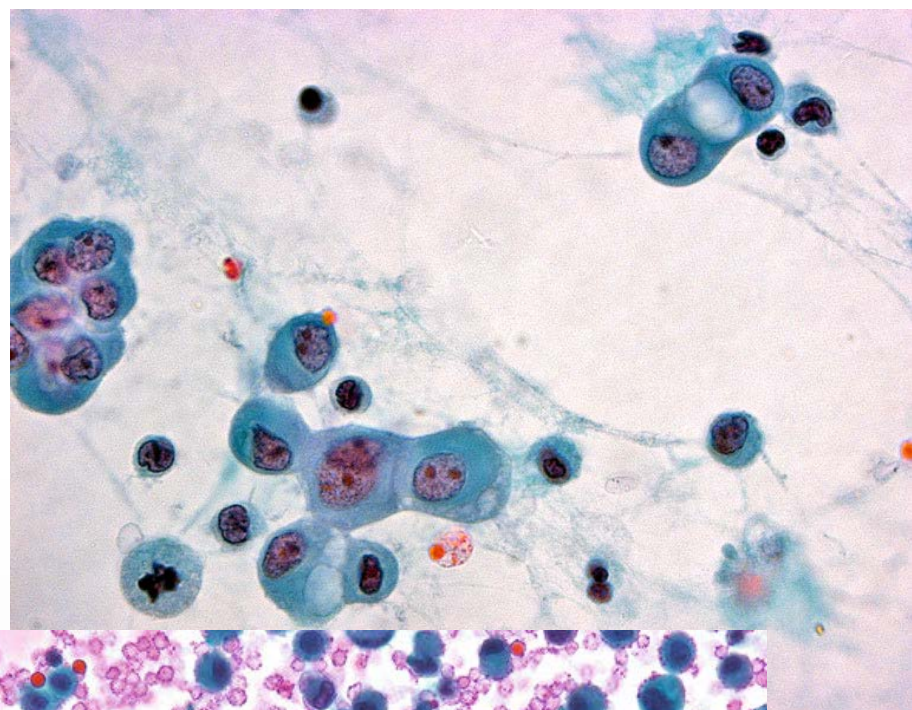
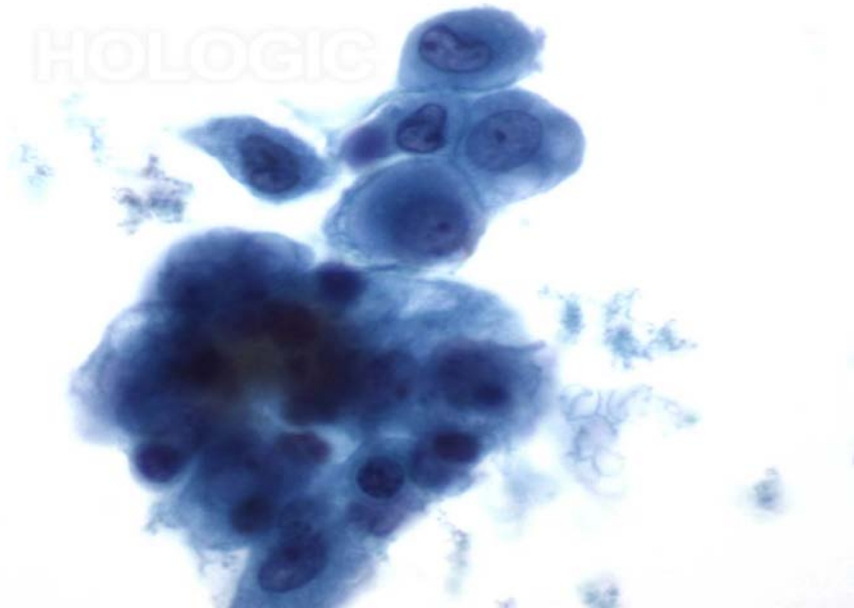


**25.** Ulusal Patoloji Kongresi  
**6.** Sitopatoloji Kongresi

14 - 17 Ekim 2015 / Merinos AKKM - BURSA



HOLOGIC



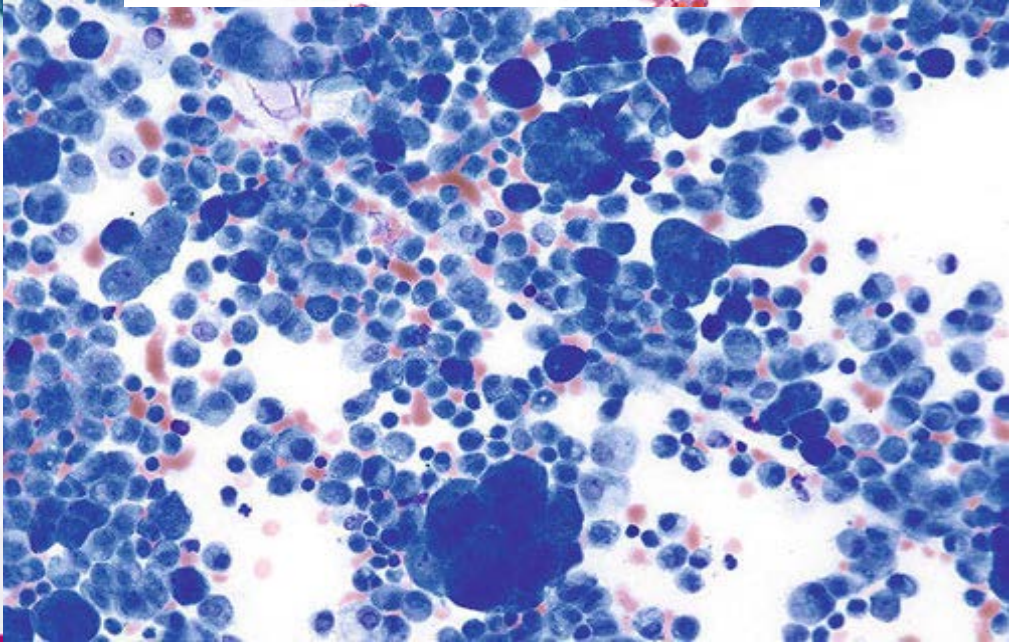
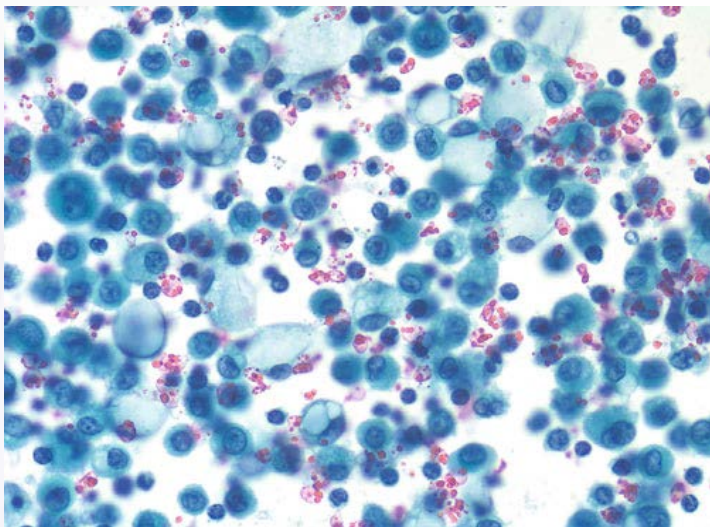
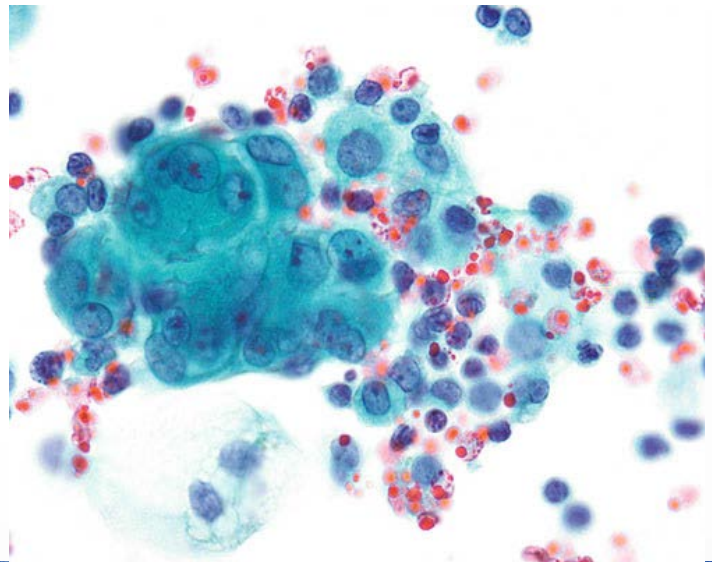
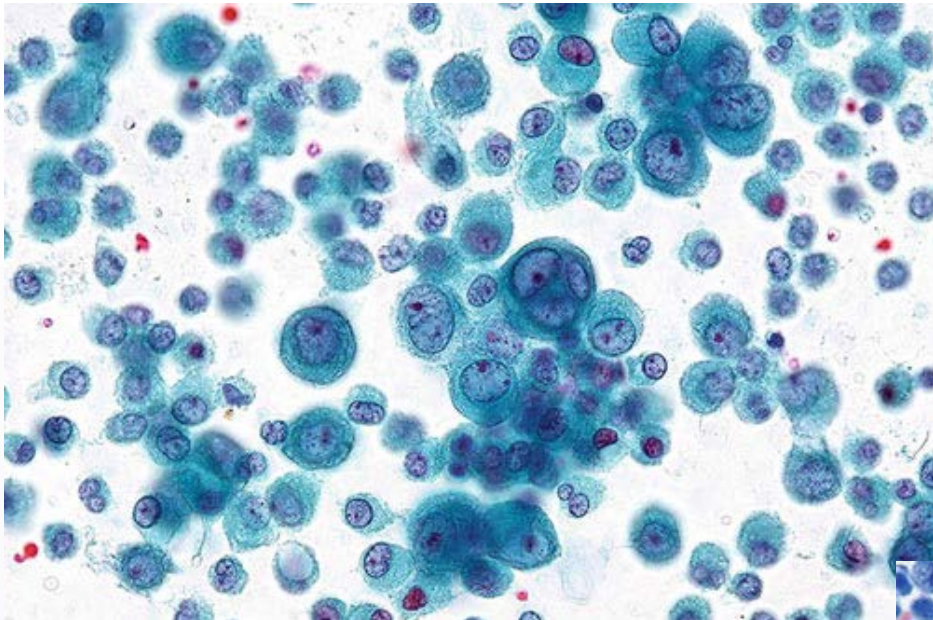
# 25. Ulusal Patoloji Kongresi

## 6. Sitopatoloji Kongresi

14 - 17 Ekim 2015 / Merinos AKKM - BURSA







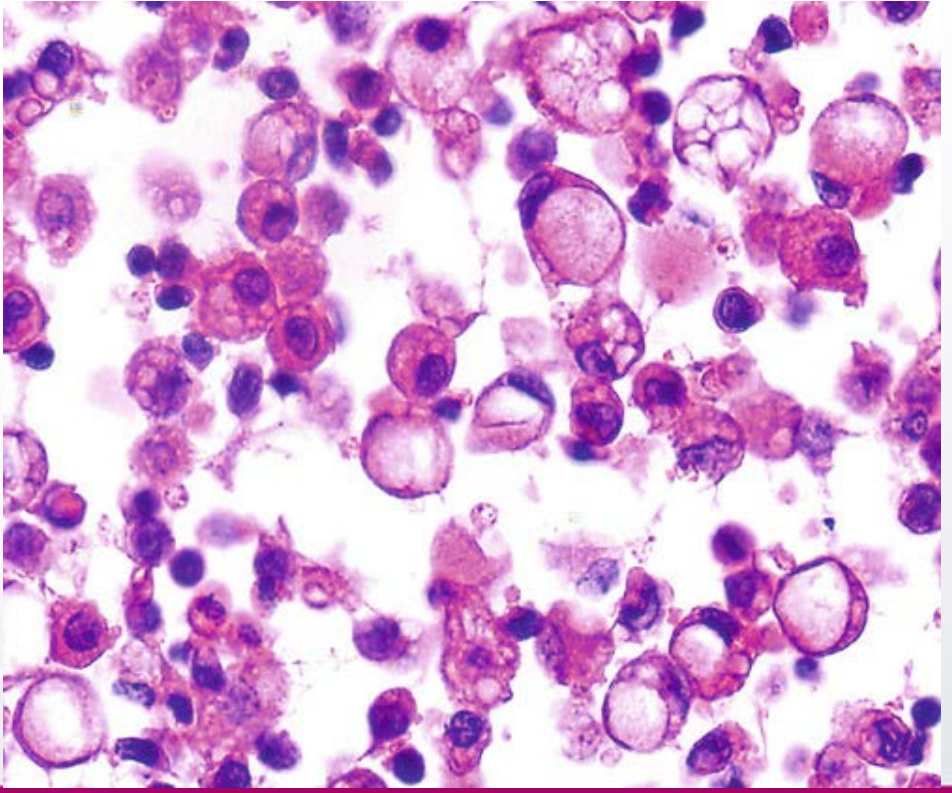
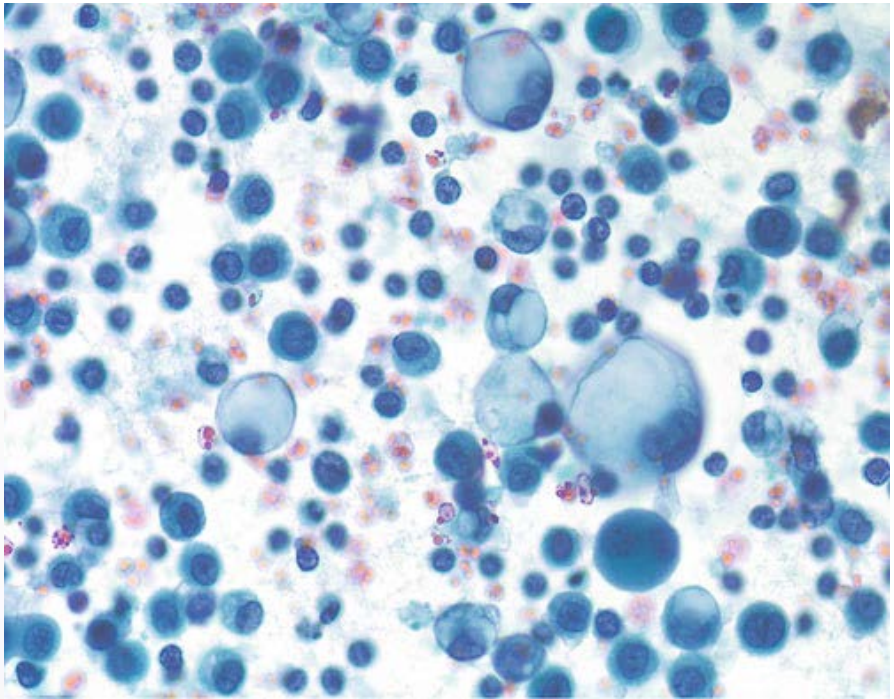
# 25. Ulusal Patoloji Kongresi

## 6. Sitopatoloji Kongresi

14 - 17 Ekim 2015 / Merinos AKKM - BURSA







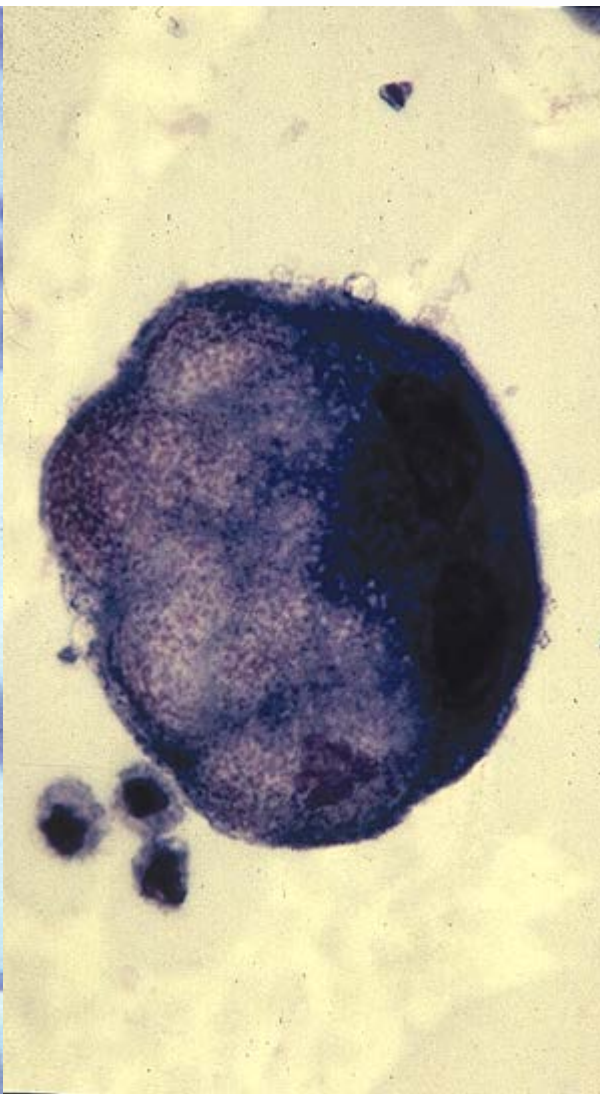
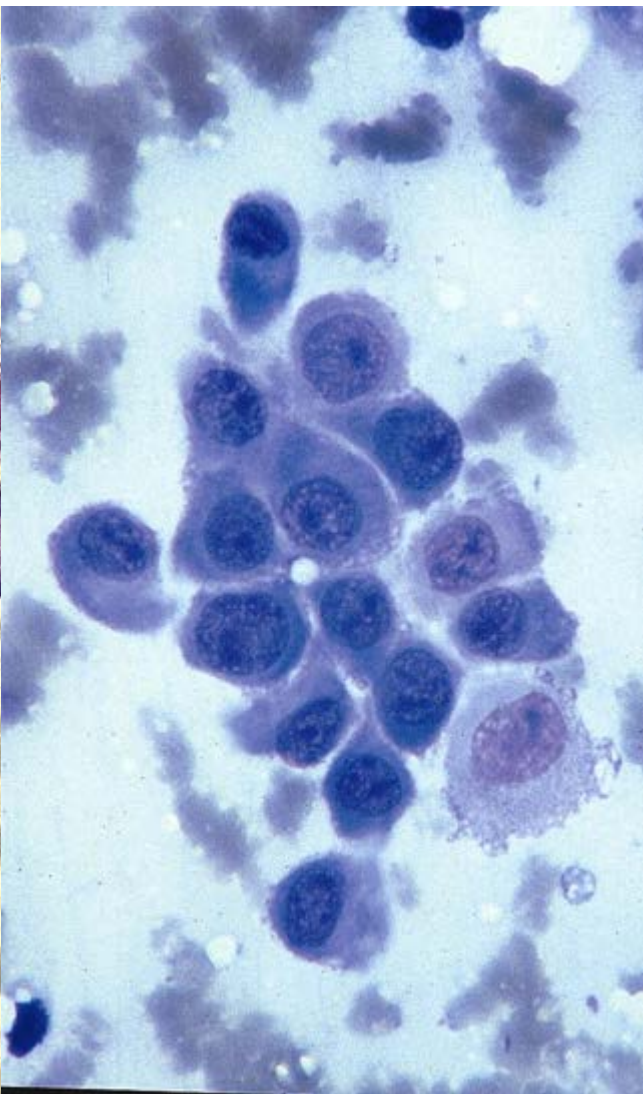
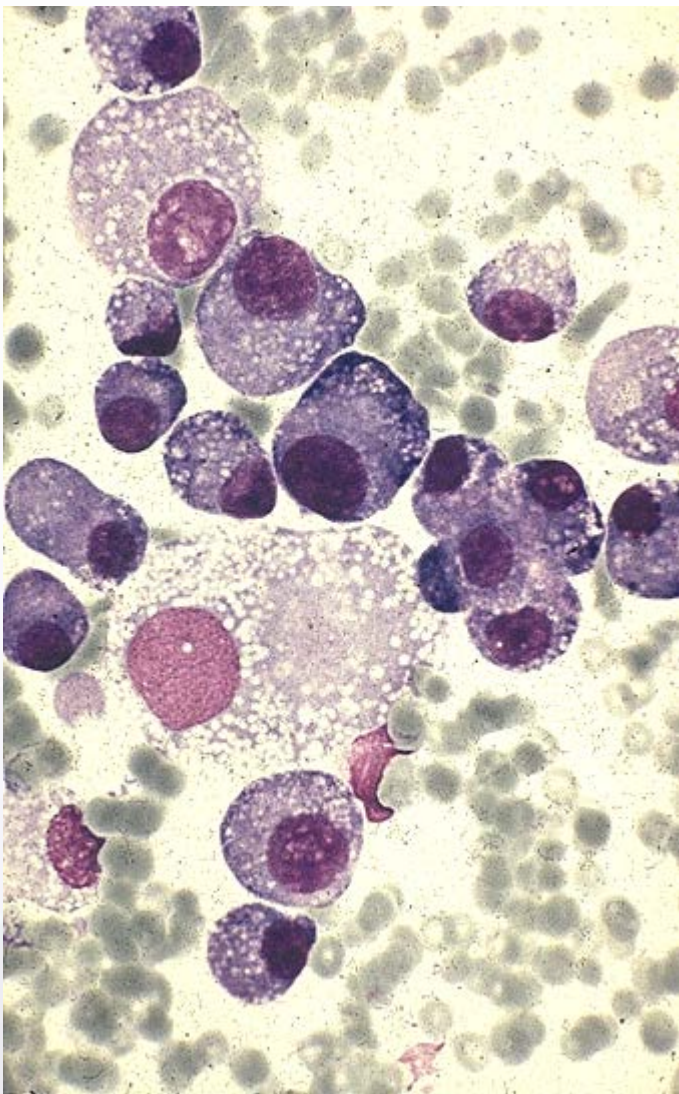
# 25. Ulusal Patoloji Kongresi

## 6. Sitopatoloji Kongresi

14 - 17 Ekim 2015 / Merinos AKKM - BURSA







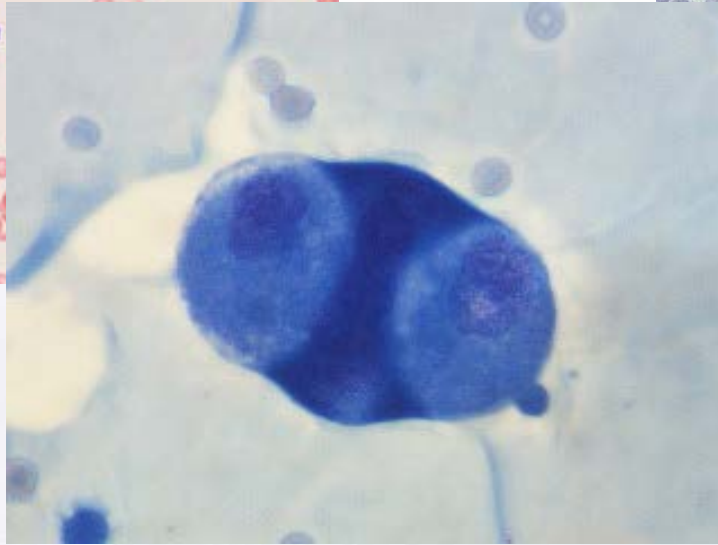
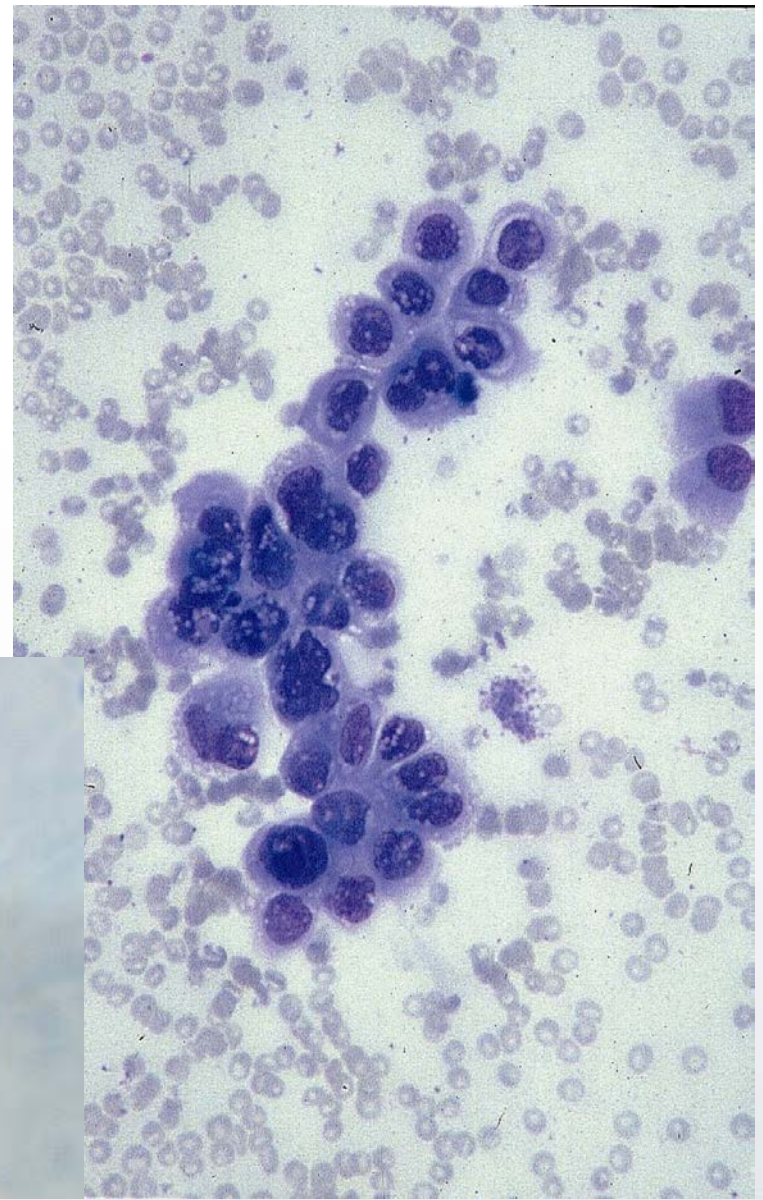
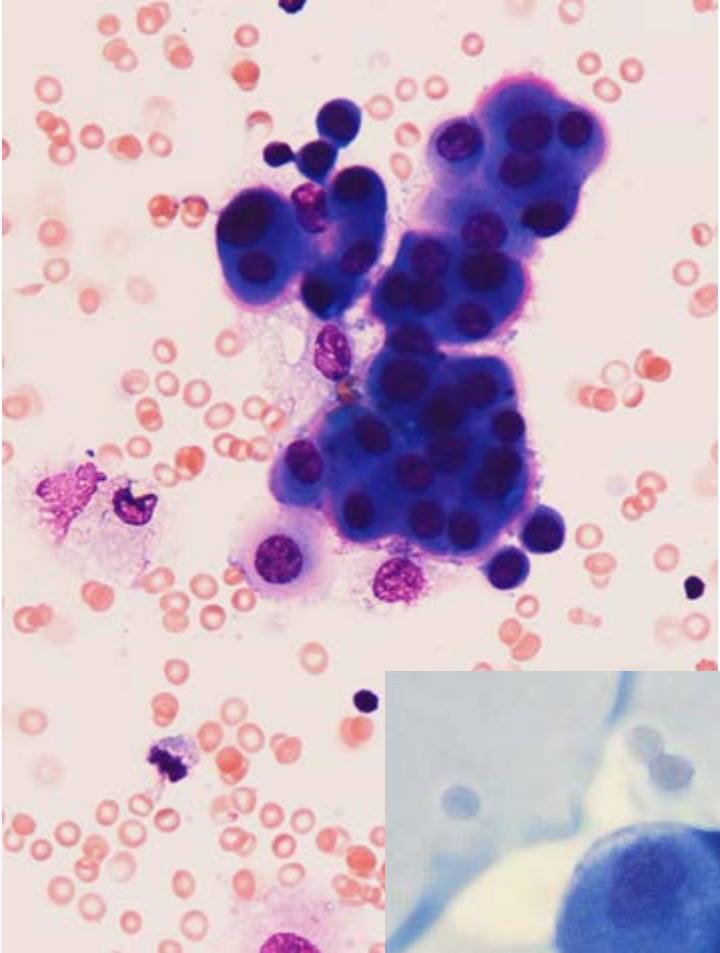
# 25. Ulusal Patoloji Kongresi

## 6. Sitopatoloji Kongresi

14 - 17 Ekim 2015 / Merinos AKKM - BURSA







# 25. Ulusal Patoloji Kongresi

## 6. Sitopatoloji Kongresi

14 - 17 Ekim 2015 / Merinos AKKM - BURSA

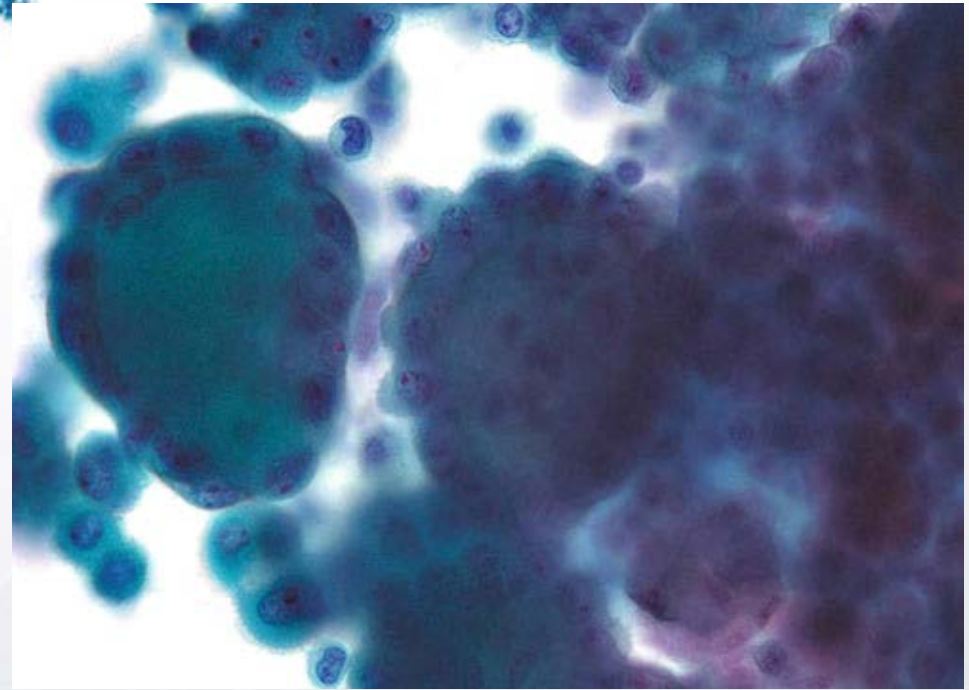
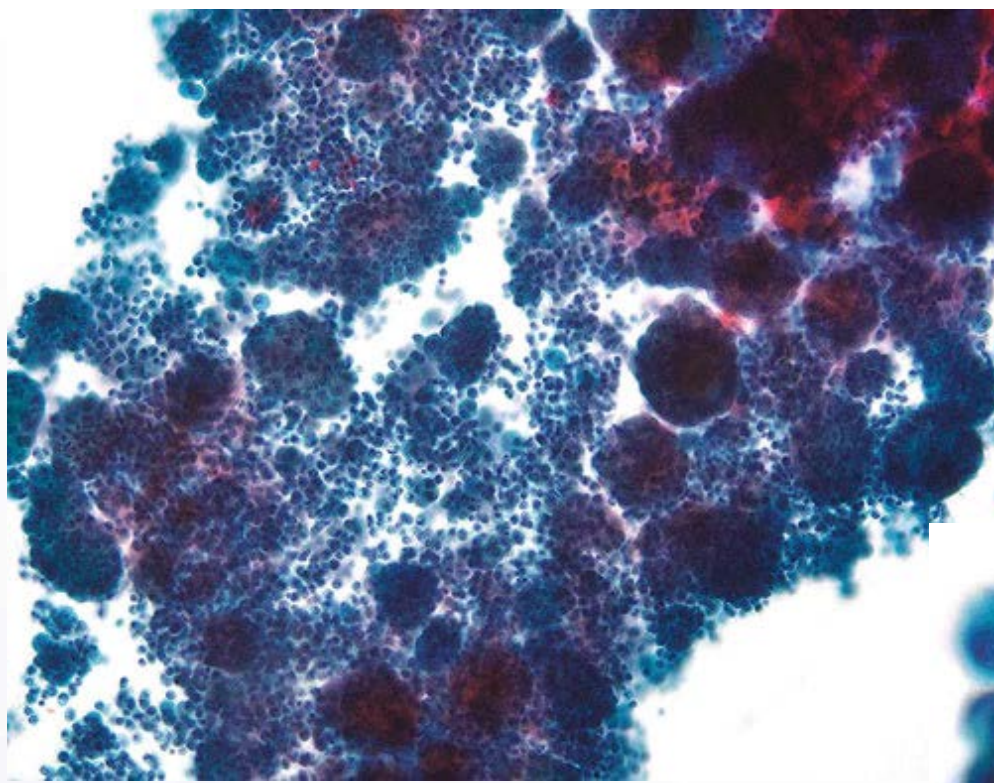




## MEZOTELYOMA

- Selüler yaymalar
- Top mermisi (canon ball) şeklinde asiner hücre grupları
- Pembe granüler arka plan
- Pleomorfik binükleer ve multinükleer hücreler
- Belirgin nükleol
- Koyu boyanmış sitoplazma yanı sıra vakuollü sitoplazma da izlenebilir
- Hücreleri birbirine yakın konumlanır ve iki hücre arasında pencere adı verilen bir açıklık bulunur
- Mikrovillus ve pesudopod sık görülür
- Bazen psammom cisimcikleri görülebilir





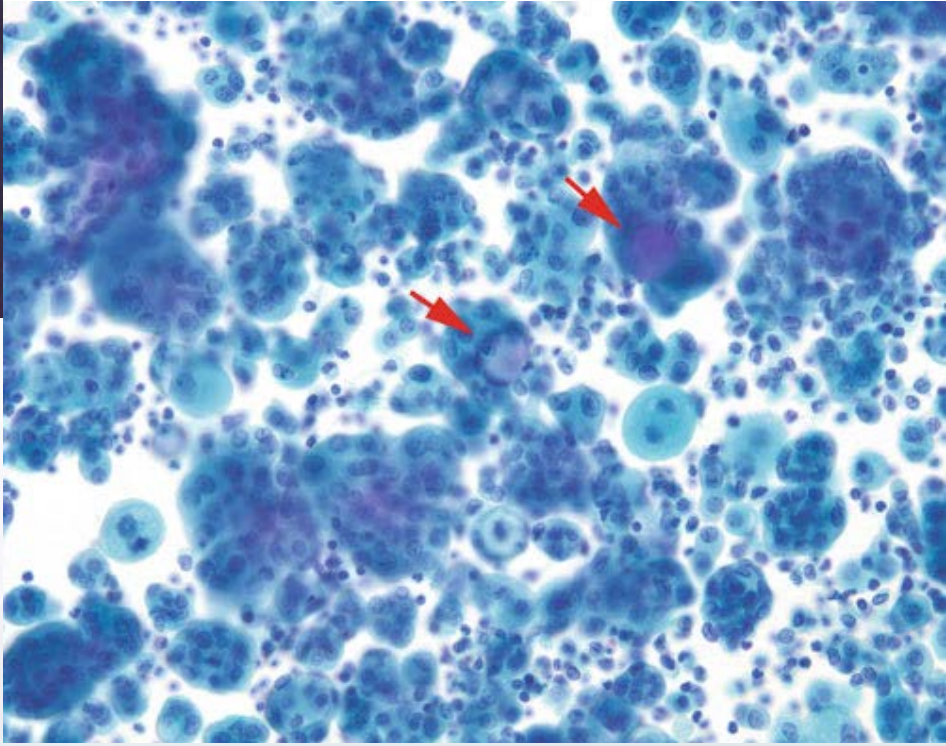
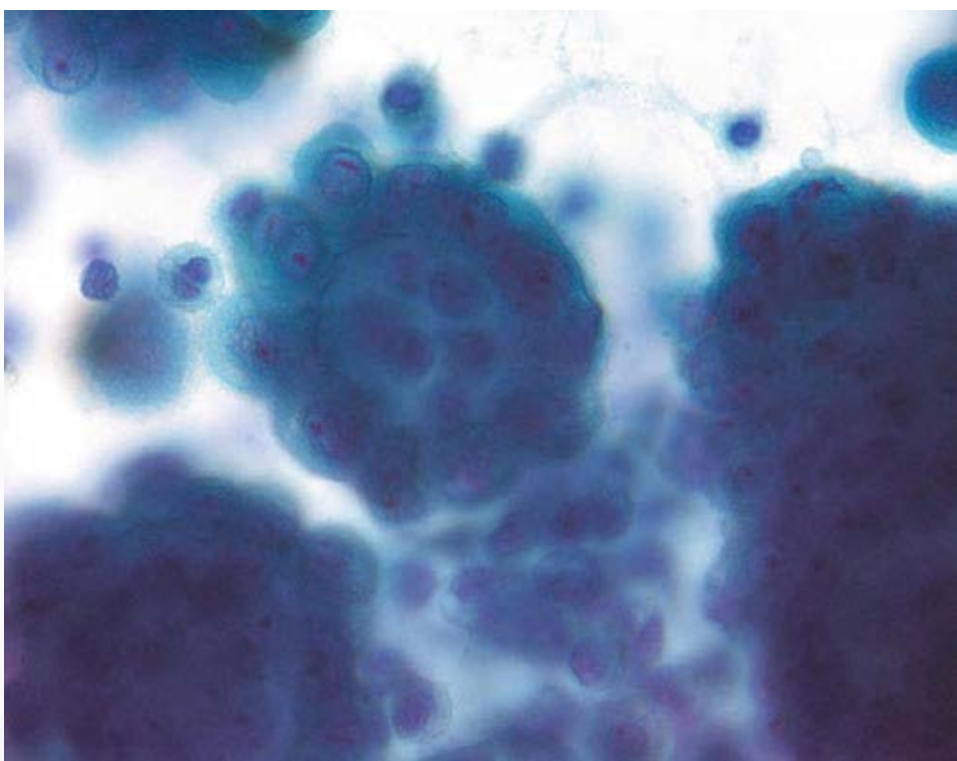
# 25. Ulusal Patoloji Kongresi

## 6. Sitopatoloji Kongresi

14 - 17 Ekim 2015 / Merinos AKKM - BURSA





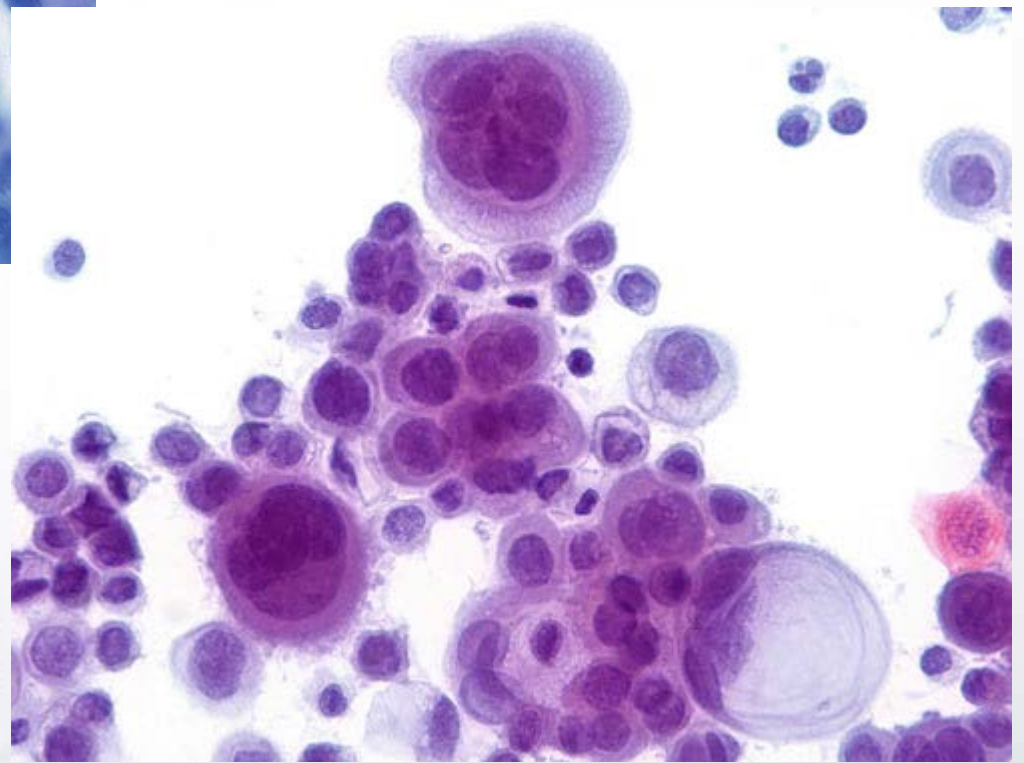
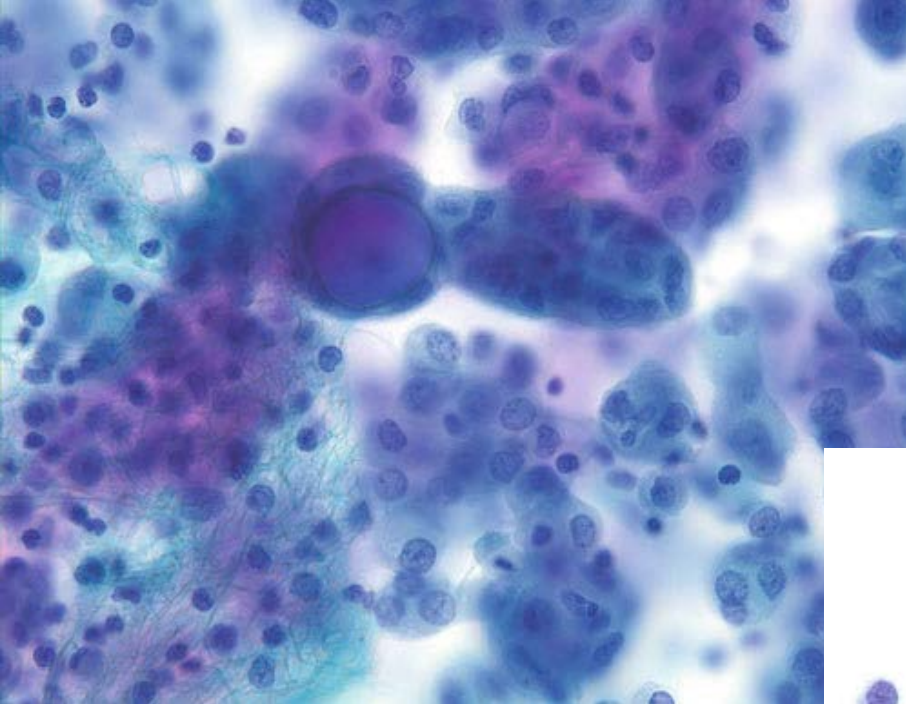


# 25. Ulusal Patoloji Kongresi

## 6. Sitopatoloji Kongresi

14 - 17 Ekim 2015 / Merinos AKKM - BURSA





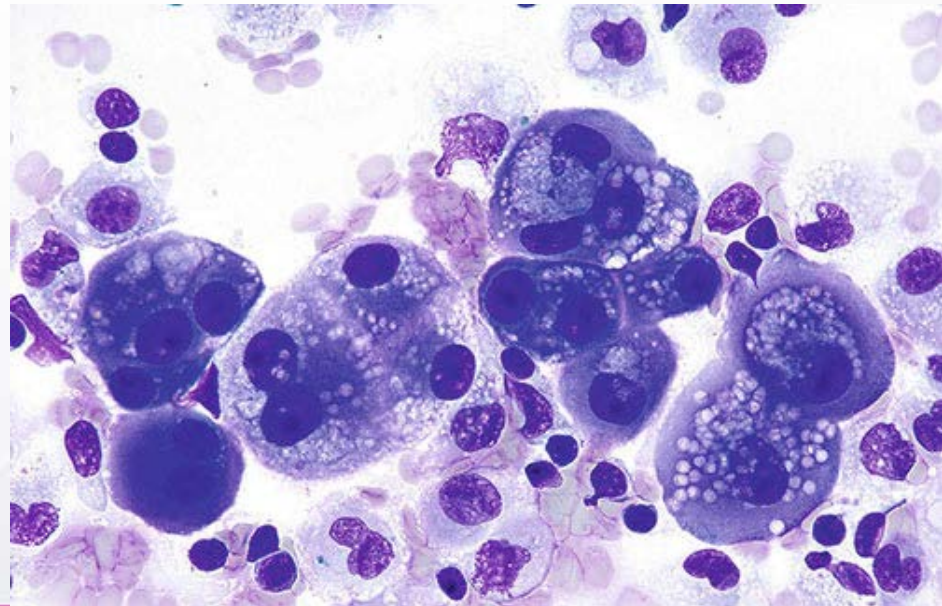
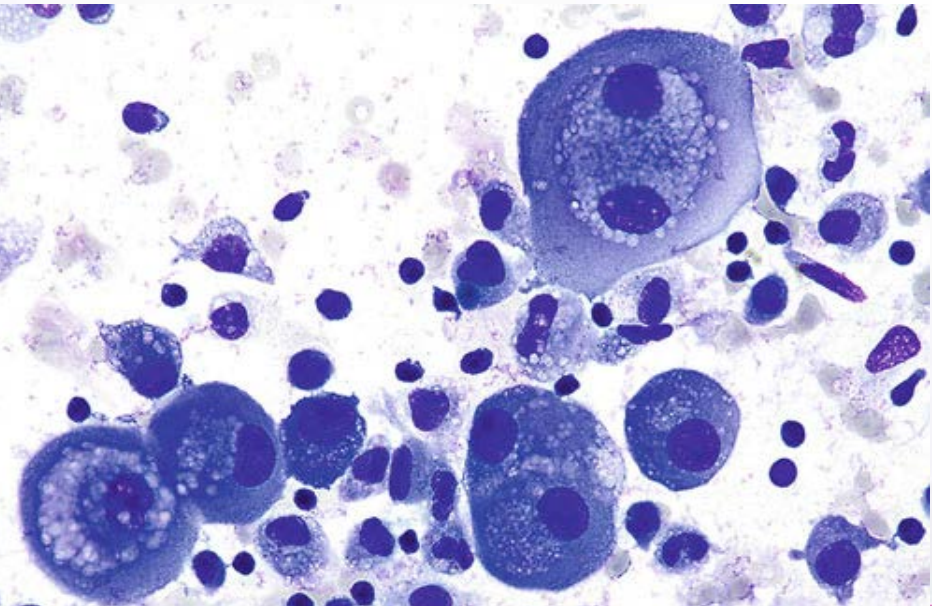
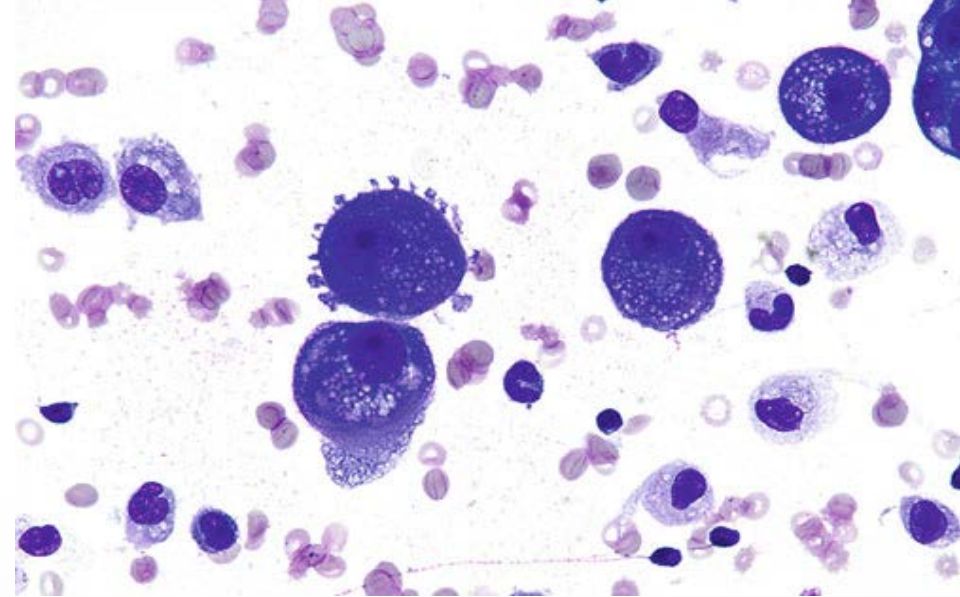
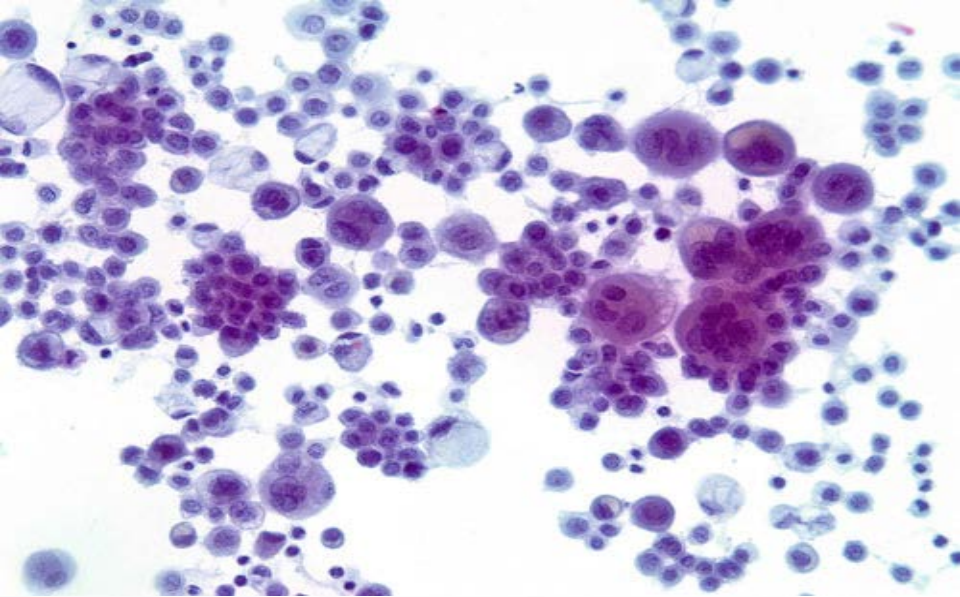
# 25. Ulusal Patoloji Kongresi

## 6. Sitopatoloji Kongresi

14 - 17 Ekim 2015 / Merinos AKKM - BURSA







# 25. Ulusal Patoloji Kongresi

## 6. Sitopatoloji Kongresi

14 - 17 Ekim 2015 / Merinos AKKM - BURSA



# Malign mezotelyoma- Adeno Ca ayrimında ISK

	M.mezotelyoma	Adeno CA
CK 5/6	+	-
Calretinin	+	-
WT 1	+	-
CEA	-	+
B 72.3	-	+
CD15	-	+
Ber EP4	-	+
MOC 31	-	+
TTF-1	-	+
EMA	+ (membranöz)	+ (sitoplazmik)
Vimentin	+	+ (%50)



**25** Ulusal Patoloji Kongresi  
**6** Sitopatoloji Kongresi

14 - 17 Ekim 2015 / Merinos AKKM - BURSA





# DİNLEDİĞİNİZ İÇİN TEŞEKKÜRLER



**25.** Ulusal Patoloji Kongresi  
**6.** Sitopatoloji Kongresi

14 - 17 Ekim 2015 / Merinos AKKM - BURSA

